

Product datasheet for **RG218356**

ZNF750 (NM_024702) Human Tagged ORF Clone

Product data:

Product Type:	Expression Plasmids
Product Name:	ZNF750 (NM_024702) Human Tagged ORF Clone
Tag:	TurboGFP
Symbol:	ZNF750
Synonyms:	ZFP750
Mammalian Cell Selection:	Neomycin
Vector:	pCMV6-AC-GFP (PS100010)
E. coli Selection:	Ampicillin (100 ug/mL)



[View online »](#)

ORF Nucleotide Sequence:

>RG218356 representing NM_024702
 Red=Cloning site Blue=ORF Green=Tags(s)

TTTTGTAATACGACTCACTATAGGGCGGCCGGAATTCGTCGACTGGATCCGGTACCGAGGAGATCTGCC
 GCC**CGGATCGCC**

ATGAGTCTCCTCAAAGAGCGGAAGCCAAAAAGCCACATTACATCCCAGGCCTCCAGGAAAGCCCTTCA
 AGTATAAATGTTTCCAATGTCCCTTTACTTGCAATGAGAAGTCACATCTTTTAAATCACATGAAGTATGG
 TCTTTGTA AAAACTCGATTACTTTAGTATCAGAGCAGGATCGAGTTCCTCAAGTGCCTAAATCTAACTCA
 CTAGACCCCAAGCAAACCAACCAGCCCGATGCCACGGCGAAGCCAGCCTCTTCCAAGTCTGTGCAAAATG
 GACTCTCTGCCTTCGACTCGAAGCTTCAGCACAGCTCTGCCAGGGAAGACATCAAGGAAAACCTGGAGCT
 GCAAGCCCGGGAAACCCACAGGTGCCTGGGACAGAAGCCAGCCCTCCACAGGGCATCACCTGCAAGAGC
 CCAGCTCCGGAAGCCGCCCTCGGTGCCAGCCTGCTCTGGAAGGCGCAGCTCGGCCTTCTGCATTTGTT
 CAGTCGGCGAGCACAGACTCAAGGGGCCAGACAACGCCGAGGCGCCGAGACACTGGCTTTACACAACCC
 CACTGCCAAGGCCGTGTCTTTCCACACCAAGTCGGCTTCCACACTCCTGGCTACCCCTGGAAAGCCGGC
 TCACCTTTCTTCCACCAGAGTTCCACATAAAATCTCATCTACAAAGGGGCTTGGGGCCATTTCCCTT
 ACATGCACCCCAATCCAGAGTACCCGCCTCACTTTTACACAGAGCACGGGCTGGCCACCATCTACTC
 GCCTTACTGTGGTGGGAGCTCGCCTGAGTGTGACGCACCCCTGCTGTGAGTCTACGGAACCCAAAGC
 CCGAGACACTTCTGCCTCACCCGGGCGGATCCCTAAGCACCTGGCTCCATCTCCAGCCACATACGATC
 ACTACAGGTTTTTCCAGCAATATCCCTCTAACCTGCCGATTCTTACGGATTTTACAGGCCAGAGTCTGC
 ATTTTCTCTATGGTCTCAGACTCCCACCTGTACTGGCCTCACCCGAGATCAGAGCTCTCACCTGCTT
 GAAGAAGCCACCTGGTCTATCCAGCCTCGAGTCTTCCAGGTTAAACCTTTCGGACCCCAACAGAAAAC
 AGTTCGAGTTCGAAAGTCCAATTCCTGAGGCTAAAGACTCTCCAAGGCTGGGCAGAGAGACCGGAAGG
 GTCCAAAATGAGCCCCCGCGCAGGGAGTGCAGCCACGGGCTCCCAAGGAGGCCGAGCCCCACCGACTTC
 ATGCAGACGAGCCAGACCTGCGAAGGCCTGTACGACCTCTCCAACAAGGCAGCCTCCAGGCACTGGGAA
 GACTCTACCCGCCAGAGCAAAGCCTCACAGCCTTCAGGCCTGTTAAGAAAAGCACAGAATGCCTACTCTGC
 CCAGGCTGCTGAGACCACAGCAGAGTCTCCAGTAAGCCTCAATGTTGTGAACGGAGACCCTCCTGCTCCG
 ACCGGAAGCGCCTCTCTCGTCTCGGAGGCCGCGCCTTCCAGTCCGGACGACAGCTCCGGGATGGGCCCC
 TCAACCTCTCAAGAAATCAGAGATAAACCTGGCAGCCACCCACGAACCCACGTACCAAGGCAGCCCCCA
 GCGGAAACCGCCAGCTTCTCAGAGCTGCAGGACCTTCCACTCAATCTCTCGGTGAAGGACCCTGTAAC
 ACCCAGGCTCCGAGGCCCGCCTTCCCCGGTCGACCACGAGCTGCGGAACCTGCTGCTGCTGTTCCACAGA
 AGACTGGGACAGAAGTTCTGAGGATGGGCCACGCCACCTGAGACCAAGCCAGGCAGCCTCGACGGTGA
 CGGGGCCCCACCCACAGGCCCGGCGAGGAGGCTCCAGACGCATGCGCGGTGGACAGCAGCGAGGAGCAG
 AAGCAGACGGCAGCCGTGGCCCTGTGCCAGCTGGCGGCCACAGCCCCAGGAACATCCGGGTGGGCGATG
 GGGATGCTGCGGCCCGGAACCTGCCTGCCGGCAAGACACACCCACACTGAGCTCCATGGAGAGCCAAGA
 GGCCAGTGTGACCTCAGACCCAAAGGACAAAAGAGGACAAGTCTAAGGGATGCTGGAAAATCCCAGCAA
 GGAGCTAAGAAGGCGAAGCTGCAGGACACGGCCAGAGTGTTCACACTACGAAGGAGGGCCCGGTGTCC

ACGCGTACGCGGCCGCTCGAG - GFP Tag - GTTTAA

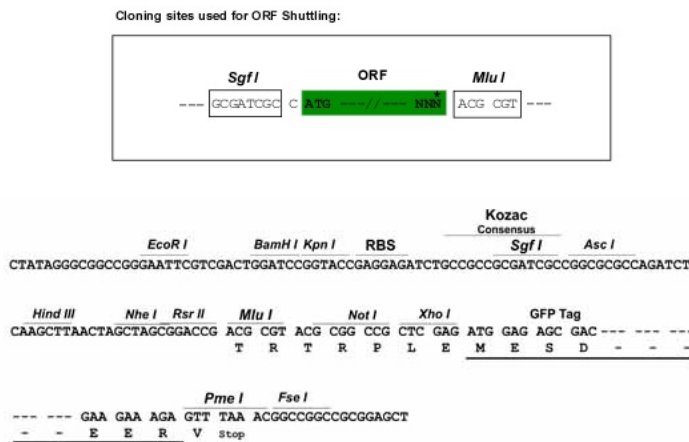
Protein Sequence: >RG218356 representing NM_024702
 Red=Cloning site Green=Tags(s)

```
MSLLKERKPKPHYIPRPPGKPFKYKCFQCPFTCNEKSHLFNHMKYGLCKNSITLVSEQDRVPKCPKSNS
LDPKQTNQPDATAKPASSKSVANGLSAFDSKLGHSSAREDIKENLELQARGTHRCLGQKPALHRASPKS
PAPEAALGAQPALEGAARPSAFVVPVGEHRLKGPDAEAPETLALHNPTAKAVSFHTKSAFHPTGYPWKAG
SPFLPPEFPHKISSTKGLGAI SPYMHPTIPEYPPHFYTEHGLATIYSPYLLAGSSPECDAPLLSVYGTQD
PRHFLPHPGPIPKHLAPSPATYDHYRFFQYPSNLPYGYRPEAFSSYGLRLLPPVTGLTRDQSSHLL
EEATLVYPASSPSRLNPSDPNRKHVEFESPIPEAKDSSKAGQRDTEGSKMSPRAGSAATGSPGRPSPTDF
MQTSQTCEGLYDL SNKAASSALGRLYPPEQSLTAFRPVKKSTECLPAQAAETTAESPVSLNINVNGDPPAP
TGSASLVSEAAPSSPDDSSGMPLNLSKKSEINLAATHEPTYQGSPQAETASFSELQDLPLNLSVKDPCN
TQAPRPAFPGRPRAAEPAAAVPQKTGTEGSEDGSPHPETKPGSLDGDGAPPTGPGEAAPDACA VDSSEEQ
KQTA AVALCQLAAYS PRNIRVGDGDA APEPACRQDTPTLSSMESQEAQC DL RPKGQKRTSLRDAGKSQQ
GAKKAKLQD TARVFTLRRRARVS
```

TRTRPLE - GFP Tag - V

Restriction Sites: SgfI-MluI

Cloning Scheme:



ACCN: NM_024702

ORF Size: 2169 bp

OTI Disclaimer: The molecular sequence of this clone aligns with the gene accession number as a point of reference only. However, individual transcript sequences of the same gene can differ through naturally occurring variations (e.g. polymorphisms), each with its own valid existence. This clone is substantially in agreement with the reference, but a complete review of all prevailing variants is recommended prior to use. [More info](#)

OTI Annotation: This clone was engineered to express the complete ORF with an expression tag. Expression varies depending on the nature of the gene.

Components: The ORF clone is ion-exchange column purified and shipped in a 2D barcoded Matrix tube containing 10ug of transfection-ready, dried plasmid DNA (reconstitute with 100 ul of water).

Reconstitution Method:

1. Centrifuge at 5,000xg for 5min.
2. Carefully open the tube and add 100ul of sterile water to dissolve the DNA.
3. Close the tube and incubate for 10 minutes at room temperature.
4. Briefly vortex the tube and then do a quick spin (less than 5000xg) to concentrate the liquid at the bottom.
5. Store the suspended plasmid at -20°C. The DNA is stable for at least one year from date of shipping when stored at -20°C.

RefSeq: [NM_024702.1](#), [NP_078978.1](#)

RefSeq Size: 3159 bp

RefSeq ORF: 2172 bp

Locus ID: 79755

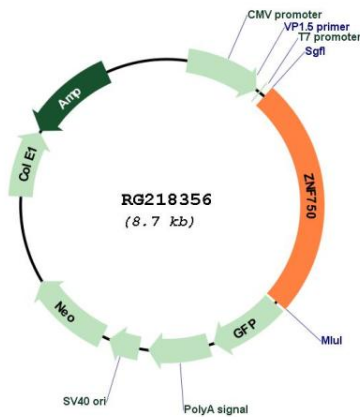
UniProt ID: [Q32MQ0](#)

Cytogenetics: 17q25.3

Domains: zf-C2H2

Gene Summary: This gene encodes a protein with a nuclear localization site and a C2H2 zinc finger domain. Mutations in this gene have been associated with seborrhea-like dermatitis with psoriasiform elements. [provided by RefSeq, Jul 2008]

Product images:



Circular map for RG218356