

## Product datasheet for **RG218306**

### **RNF21 (TRIM34) (NM\_021616) Human Tagged ORF Clone**

#### **Product data:**

Product Type:	Expression Plasmids
Product Name:	RNF21 (TRIM34) (NM_021616) Human Tagged ORF Clone
Tag:	TurboGFP
Symbol:	RNF21
Synonyms:	IFP1; RNF21
Mammalian Cell Selection:	Neomycin
Vector:	pCMV6-AC-GFP (PS100010)
E. coli Selection:	Ampicillin (100 ug/mL)



[View online »](#)

**ORF Nucleotide Sequence:**

>RG218306 representing NM\_021616  
 Red=Cloning site Blue=ORF Green=Tags(s)

TTTTGTAATACGACTCACTATAGGGCGGCCGGAATTCGTCGACTGGATCCGGTACCGAGGAGATCTGCC  
 GCC**CGGATCGCC**

ATGGCTTCAAAAATCTTGCTTAACGTACAAGAGGAGGTGACCTGTCCCATCTGCCTGGAGCTGTTGACAG  
 AACCCTTGAGTCTAGACTGTGGCCACAGCCTCTGCCGAGCCTGCATCACTGTGAGCAACAAGGAGGCAGT  
 GACCAGCATGGGAGGAAAAAGCAGCTGTCTGTGTGGTATCAGTTACTCATTTGAACATCTACAGGCT  
 AATCAGCATCTGGCCAACATAGTGGAGAGACTCAAGGAGGTCAAGTTGAGCCAGACAATGGGAAGAAGA  
 GAGATCTCTGTGATCATCATGGAGAGAACTCCTACTCTTCTGTAAGGAGGATAGGAAAGTCATTTGCTG  
 GCTTTGTGAGCGGTCTCAGGAGCACCGTGGTACCACACAGTCTCACGGAGGAAGTATTCAGGAATGT  
 CAGGAGAACTCCAGGCAGTCTCAAGAGGCTGAAGAAGGAAGAGGAGGAAGCTGAGAAGCTGGAAGCTG  
 ACATCAGAGAAGAGAAAACCTTCTGGAAGTATCAGGTACAAACTGAGAGACAAAGGATACAAACAGAATT  
 TGATCAGCTTAGAAGCATCCTAAATAATGAGGAGCAGAGAGAGCTGCAAAGATTGGAAGAAGAAGAAAAG  
 AAGACGCTGGATAAGTTTGCAGAGGCTGAGGATGAGCTAGTTACAGAGAAGCAGTTGGTGAGAGAGCTCA  
 TCTCAGATGTGGAGTGTGGAGTCAAGTGGTCAACAATGGAGCTGCTGCAGGACATGAGTGGAAATCATGAA  
 ATGGAGTGAGATCTGGAGGCTGAAAAAGCCAAAATGGTTTCCAAGAACTGAAGACTGTATTCCATGCT  
 CCAGATCTGAGTAGGATGCTGCAAAATGTTTAGAGAAGTACAGCTGTCCGGTGTACTGGGTGGATGTCA  
 CACTGAATTCAGTCAACCTAAATTTGAATCTTGTCTTTCAGAAGATCAGAGACAAGTGATATCTGTGCC  
 AATTTGGCCTTTTCAGTGTATAATTATGGTGTCTTGGGATCCCAATATTTCTCCTCTGGGAAACATTAC  
 TGGGAAGTGGACGTGTCCAAGAAAACCTGCTGGATCCTGGGGTATACTGTAGAACATATCCCGCCATA  
 TGAAGTATGTTGTTAGAAGATGTGCAAAATCGTCAAAATCTTACACCAAAACAGACCTCTATTTGGCTA  
 CTGGGTTATAGGGTTACAGAATAAATGTAAGTATGGTGTCTTTGAAGAGTCTTTGCTCCTCTGATCCCGAG  
 GTTTTACTCTCTCCATGGCTGTGCCTCCCTGCCGTGTTGGGTTTTCTCGACTATGAAGCAGGCATTG  
 TCTCATTTTTCAATGTCACAAGCCATGGCTCCCTCATTTACAAGTTCTCTAAATGTTGCTTTTCTCAGCC  
 TGTTTATCCATATTTCAATCCTTGGAACTGTCCAGCTCCCATGACTCTATGCCCAACAGCTCT

**ACGCGTACGCGGCCGCTCGAG** – GFP Tag – GTTTAA

**Protein Sequence:**

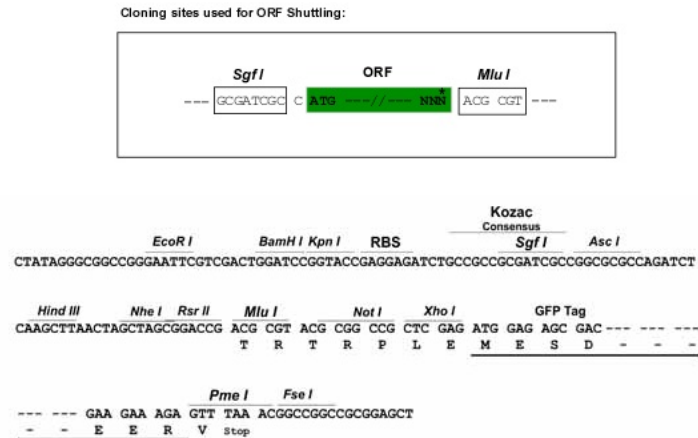
>RG218306 representing NM\_021616  
 Red=Cloning site Green=Tags(s)

MASKILLNVQEEVTCPICLELLTEPLSLDCGHSLCRACITVSNKEAVTSMGGKSSCPVCGISYSFEHLQA  
 NQHLANIVERLKEVKLSPDNGKKRDLCDHHGEKLLLFCKEDRKVICWLCERSQEHRGHHTVLTTEEVFKEC  
 QEKLQAVLKRLKKEEEEEAEKLEADIREEKTSWKYQVQTERQRIQTTEFDQLRSILNNEEQRELQRLEEEK  
 KTLDFKFAEADELVQKQLVRELI SDVECRSQWSTMELLQDMSGIMKWEIWRLLKPKMVSKLKTVFHA  
 PDL SRMLQMFRELTA VRCYWVDVTLNSVNLNLNLVLS EDQRQVISVPIWPFQCYNYGVLSQYFSSGKHY  
 WEVDVSKKTAWILGVYCRYSRHMKYVVRRCANRQNLTYKYRPLFGYWVIGLQNKCKYGVFEESLSSDPE  
 VLTLSMAVPPCRVGVFLDYEAGIVSFFNVTSHGSLIYKFSKCCFSQPVPYYPFNWNCAPMTLCPSS

**TRTRPLE** – GFP Tag – V

**Restriction Sites:**

Sgfl-MluI

**Cloning Scheme:**


**ACCN:** NM\_021616

**ORF Size:** 1464 bp

**OTI Disclaimer:** The molecular sequence of this clone aligns with the gene accession number as a point of reference only. However, individual transcript sequences of the same gene can differ through naturally occurring variations (e.g. polymorphisms), each with its own valid existence. This clone is substantially in agreement with the reference, but a complete review of all prevailing variants is recommended prior to use. [More info](#)

**OTI Annotation:** This clone was engineered to express the complete ORF with an expression tag. Expression varies depending on the nature of the gene.

**Components:** The ORF clone is ion-exchange column purified and shipped in a 2D barcoded Matrix tube containing 10ug of transfection-ready, dried plasmid DNA (reconstitute with 100 ul of water).

**Reconstitution Method:**

1. Centrifuge at 5,000xg for 5min.
2. Carefully open the tube and add 100ul of sterile water to dissolve the DNA.
3. Close the tube and incubate for 10 minutes at room temperature.
4. Briefly vortex the tube and then do a quick spin (less than 5000xg) to concentrate the liquid at the bottom.
5. Store the suspended plasmid at -20°C. The DNA is stable for at least one year from date of shipping when stored at -20°C.

**RefSeq:** [NM\\_021616.6](#)

**RefSeq Size:** 2302 bp

**RefSeq ORF:** 1467 bp

**Locus ID:** 53840

**UniProt ID:** [Q9BYJ4](#)

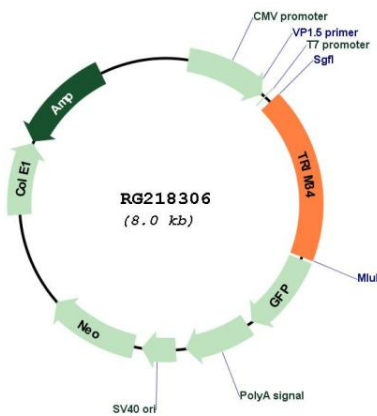
**Cytogenetics:** 11p15.4

**Domains:** zf-B\_box, RING, SPRY

**Protein Families:** Druggable Genome

**Gene Summary:** The protein encoded by this gene is a member of the tripartite motif (TRIM) family. The TRIM motif includes three zinc-binding domains, a RING, B-box type 1 and B-box type 2 domain, and a coiled-coil region. Expression of this gene is up-regulated by interferon. This gene is mapped to chromosome 11p15, where it resides within a TRIM gene cluster. Alternative splicing results in multiple transcript variants. A read-through transcript from the upstream TRIM6 gene has also been observed, which results in a fusion product from these neighboring family members. [provided by RefSeq, Oct 2010]

**Product images:**



Circular map for RG218306