

## Product datasheet for **RG218298**

### C14orf130 (UBR7) (NM\_175748) Human Tagged ORF Clone

#### Product data:

Product Type:	Expression Plasmids
Product Name:	C14orf130 (UBR7) (NM_175748) Human Tagged ORF Clone
Tag:	TurboGFP
Symbol:	C14orf130
Synonyms:	C14orf130; LICAS
Mammalian Cell Selection:	Neomycin
Vector:	pCMV6-AC-GFP (PS100010)
E. coli Selection:	Ampicillin (100 ug/mL)
ORF Nucleotide Sequence:	>RG218298 representing NM_175748 Red=Cloning site Blue=ORF Green=Tags(s)

TTTTGTAATACGACTCACTATAGGGCGGCCGGAATTCGTCGACTGGATCCGGTACCGAGGAGATCTGCC  
GCC**CGATCGCC**

ATGGCCGGAGCCGAGGGCGCCGCTGGGCGGCAGTCGGAGCTGGAGCCCGTGGTATCGTTGGTCGACGTCC  
TTGAGGAGGACGAGGAGCTGGAGAATGAGGCGTGCCTGTCTGGGCGGCGGACTCCGAGAAGTGCTC  
CTACTCTCAGGGCTCAGTAAAGAGACAAGCACTATATGCCTGTAGTACCTGCACCCAGAGGAGAAGAA  
CCAGCAGGAATTTGTTTAGCTTGCAGTTATGAATGTCATGGAAGTCACAACTATTTGAGCTATACAAA  
AAAGAAATTTTCGTTGTGATTGTGAAACAGCAAGTTTAAAAATTTGGAATGCAAATTACTTCTGACAA  
AGCAAAGGTAAATCTGGCAATAAGTACAATGACAACCTTTTTGGATTGTACTGCATTTGCAAGAGACCT  
TATCCTGATCCTGAAGACGAGATTCCAGATGAGATGATCCAGTGCCTAGTCTGTGAAGACTGGTTCCATG  
GAAGGCATCTTGGTGCCATTCGCCCTGAGAGTGGGGATTTTCAGAAGATGGTATGCCAGGCCTGCATGAA  
ACGTTGTCTTTTTGTGGGCTTATGCTGCACAATTGGCAGTAACCAAAATATCCACTGAGGATGATGGA  
TTGGTGCGGAACATTGATGGAATAGGTGATCAGGAAGTTATCAAACCTGAAAATGGAGAGCATCAAGATA  
GTACCCCAAAGAGGATGTTCCAGAACAGGAAAGGATGATGTCGGGAGGTTAAAGTAGAGCAGAACAG  
TGAACCATGTGCCGGCTCTAGTTCTGAATCTGATCTCCAGACAGTGTAAAGAATGAAAGCCTCAACGCA  
GAATCAAAATCTGGCTGCAAACCTCAGGAGCTTAAAGCTAAGCAGCTTATAAAGAAGACACTGCCACCT  
ATTGGCCCTGAACTGGCGTAGCAAGTTGTGTACCTGCCAAGACTGTATGAAAATGTATGGAGATCTAGA  
TGTCTTATTCTGACAGATGAATACGACACAGTTCTGGCTTATGAAAACAGAGGGAAGATTGCCAGGCC  
ACTGACAGGAGCGATCCCCTAATGGATACCCTTAGCAGCATGAATAGAGTCCAGCAAGTGGAACTCATT  
GTGAATACAATGATTTGAAGACTGAACTTAAAGACTATCTCAAGAGATTTGCTGATGAAGGCACGGTTGT  
TAAGAGAGAGGACATTACGAGTTCTTTGAAGAGTTTCAGTCAAAAAAGAGAAGAAGAGTGGATGGGATG  
CAGTATTACTGCAGC

**ACGCGT**ACGCGGCCGCTCGAG - GFP Tag - GTTTAA



[View online »](#)

**Protein Sequence:** >RG218298 representing NM\_175748  
Red=Cloning site Green=Tags(s)

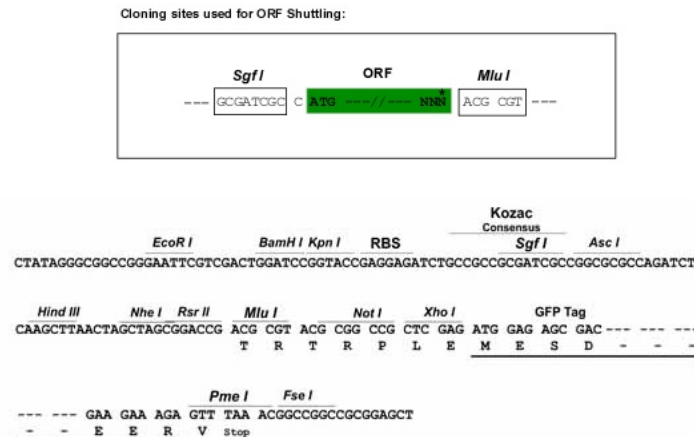
MAGAEGAAGRQSELEPVVSLVDVLEEDELENEACAVLGGGDSEKCSYSQGSVKRQALYACSTCTPEGEE  
 PAGICLACSYECHGSHKLFELYTKRNFRCDCGNSKFKNLECKLLPDKAKVNSGNKYNDNFFGLYCICKRP  
 YPDPEDEIPDEMIQCVCEDWFHGRHLGAIPESGDFQKMVCQACMKRCSFLWAYAAQLAVTKISTEDDG  
 LVRNIDGIGDQEVIKPENGEHQDSTLKEDVPEQKDDVREVKVEQNSEPCAGSSSESDLQTVFKNESLNA  
 ESKSGCKLQELKAKQLIKKDTATYWPLNWRSLCTCQDCMKMYGDLDVLFLLTDEYDTVLAYENRGIAQA  
 TDRSDPLMDTLSSMNRVQQVELICEYNDLKTDLKDYLRKFADEGTVVKREDIQQFFEEFQSKRRRRVDGM  
 QYYCS

TRTRPLE – GFP Tag – V

**Restriction Sites:**

SgfI-MluI

**Cloning Scheme:**



**ACCN:** NM\_175748

**ORF Size:** 1275 bp

**OTI Disclaimer:** The molecular sequence of this clone aligns with the gene accession number as a point of reference only. However, individual transcript sequences of the same gene can differ through naturally occurring variations (e.g. polymorphisms), each with its own valid existence. This clone is substantially in agreement with the reference, but a complete review of all prevailing variants is recommended prior to use. [More info](#)

**OTI Annotation:** This clone was engineered to express the complete ORF with an expression tag. Expression varies depending on the nature of the gene.

**Components:** The ORF clone is ion-exchange column purified and shipped in a 2D barcoded Matrix tube containing 10ug of transfection-ready, dried plasmid DNA (reconstitute with 100 ul of water).

**Reconstitution Method:**

1. Centrifuge at 5,000xg for 5min.
2. Carefully open the tube and add 100ul of sterile water to dissolve the DNA.
3. Close the tube and incubate for 10 minutes at room temperature.
4. Briefly vortex the tube and then do a quick spin (less than 5000xg) to concentrate the liquid at the bottom.
5. Store the suspended plasmid at -20°C. The DNA is stable for at least one year from date of shipping when stored at -20°C.

**RefSeq:** [NM\\_175748.2](#)

**RefSeq Size:** 1576 bp

**RefSeq ORF:** 1278 bp

**Locus ID:** 55148

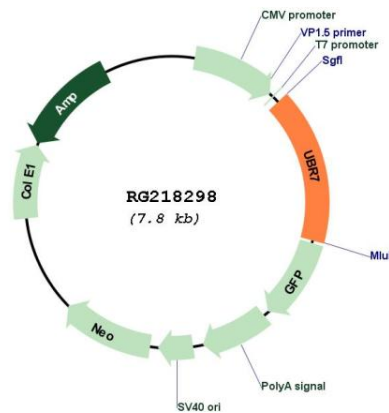
**UniProt ID:** [Q8N806](#)

**Cytogenetics:** 14q32.12

**Protein Families:** Druggable Genome

**Gene Summary:** This gene encodes a UBR box-containing protein that belongs to the E3 ubiquitin ligase family. The protein also contains a plant homeodomain (PHD) in the C-terminus. In mammals, the encoded protein recognizes N-degrons, the destabilizing N-terminal residues of short-lived proteins, which results in ubiquitinylation, and proteolysis via the proteasome. [provided by RefSeq, Jul 2016]

## Product images:



Circular map for RG218298