

Product datasheet for **RG218297**

NSD1 (NM_172349) Human Tagged ORF Clone

Product data:

Product Type:	Expression Plasmids
Product Name:	NSD1 (NM_172349) Human Tagged ORF Clone
Tag:	TurboGFP
Symbol:	NSD1
Synonyms:	ARA267; KMT3B; SOTOS; SOTOS1; STO
Mammalian Cell Selection:	Neomycin
Vector:	pCMV6-AC-GFP (PS100010)
E. coli Selection:	Ampicillin (100 ug/mL)
ORF Nucleotide Sequence:	>RG218297 representing NM_172349 Red=Cloning site Blue=ORF Green=Tags(s)

TTTTGTAATACGACTCACTATAGGGCGCCGGGAATTCGTCGACTGGATCCGGTACCGAGGAGATCTGCC
GCC**CGATCGCC**

ATGCCCTGAAGACAAGGACAGCCCTTTCGGATGATCCAGATTCCAGTACCAGTACATTAGGAAACATGC
TAGAATTACCTGGAACCTCATCATCTACTTCACAGGAATTGCCATTTGTCAACCTAAGAAAAAGTC
TACGCCACTGAAGTATGAAGTTGGAGATCTCATCTGGGCAAAATCAAGAGACGCCCATGGTGGCCCTGC
AGGATTTGTTCTGATCCGTTGATTAACACACATTCAAAAATGAAAGTTTCAACCCGAGGCCCTATCGGC
AGTACTACGTGGAGGCTTTTGGAGATCCTTCTGAGAGAGCCTGGGTGGCTGGAAAAGCAATCGTCATGTT
TGAAGGCAGACATCAATTCGAAGAGCTACCTGTCTTAGGAGAAGAGGAAACAGAAAGAAAAAGGATAT
AGGCATAAGGTTCTCAGAAAAATTTGAGTAAATGGGAAGCCAGTGTGGACTTGCAAGACAGTATGATG
TTCCCAAGGGGTCAAAGAACCGAAAAATGTATTCCTGGTCAATCAAGTTGGACAGTGAAGAAGATATGCC
ATTTGAAGACTGCACAAATGATCCTGAGTCAGAACATGACCTGTTGCTTAATGGCTGTTTGAATCACTG
GCTTTTGATTCTGAACATTCTGCAGATGAGAAGGAAAAGCCTTGGCTAAATCTCGAGCCAGAAAGAGCT
CTGATAATCCAAAAAGGACTAGTGTGAAAAAGGGCCACATACAATTTGAAGCACATAAAGATGAACGGAG
GGGAAAGATTCCAGAGAACCCTTGGCCTAACTTTATCTCTGGGGATATATCTGATACGCAGGCCCTAAT
GAACCTTCCAGGATAGCAATAGCCTCACAGGGTCCAACACTGCCCCAGGAAGTTTCTGTTTTCTTCTCCT
GTGGAAAAACACTGCAAGAAAGAAATTTGAGACTTCAAATGGTGACTCTTTATTGGGCTTGCTGAGGG
TGCTTTGATCTCAAAGTGTCTCGAGAGAAGAATAAACCCCAACGAAGCCTGGTGTGTGGTTCAAAGTG
AAGCTCTGCTATATTGGAGCAGGTGATGAGGAAAAGCGAAGTGATTCCATTAGTATCTGTACCCTTCTG
ATGATGGAAGCAGTGACCTGGATCCCATAGAACACAGCTCAGAGTCTGATAACAGTGTCTTGAAATTC
AGATGCTTTCGATAGAACAGAGAACATGTTATCTATGCAGAAAAATGAAAAGATAAAGTATTCTAGGTTT
GCTGCCACAAACTAGGGTAAAAGCAAAACAGAAAGCCTCTCATTAGTAACACATACAGACCCTTAA
TGGGTTGTAAGAGTGCAGAGCCTGGAACCGAGACGTCTCAGGTTAATCTCTCTGATCTGAAGGCATC
TACTCTGTTCACAAACCCAGTCAGATTTACAATGATGCTCTCTCCTCAAAATCAACCTGTATCA



[View online »](#)

AGCATATCCAGTGAGAACTCGTTAATAAAGGGTGGGGCAGCAAATCAAGCTCTATTACATTTCGAAAAGCA
AACAGCCCAAGTCCGAAGTATAAAGTGCAAACACAAAGAAAATCCAGTTATGGCAGAACCCCAAGTTAT
AAATGAGGAGTGCAGTTTGAAATGCTGCTCTTCTGATACCAAAGGCTCTCCTTTGGCCAGCATTTCTAAA
AGTGGGAAAGTGGATGGTCTAAACTACTGAACAATATGCATGAGAAAACCAGGGATTCAAGTGACATAG
AAACAGCAGTGGTGAACATGTTTTATCCGAGTTGAAGGAACTCTTACAGATCCTTAGGTGAGGATGT
CAGTGACTCTGGAACATCAAAGCCATCAAACCATTACTTTTCTTCTGCTTCTAGTCAGAATCACATA
CCTATTGAACCAGACTACAAATTCAGTACATTGCTAATGATGTTGAAAGATATGCATGATAGTAAGACGA
AGGAGCAGCGGTTGATGACTGCTCAAACCTGGTCTTTACCGGAGTCCTGGTCGTGGGGACTGTTCTAC
TAATAGTCTGTAGGAGTCTCTAAGTTTTGGTTTCAGGAGGCTCCACACACAATTCAGAGAAAAAGGGA
GATGGCACTCAGAACTCCGCCAATCCTAGCCCTAGTGGGGTACTGCTGATTATCTGGCGAGTTGTCTG
CTTCCCTACCTGGCTTACTGTCCGACAAGAGAGACCTCCCTGCTTCTGGTAAAAGTGGTTCAGACTGTGT
TACTAGGCCTCACTGTGGACGATCAAAGCCTTCATCAAATTGCGAGATGCTTTTTTCAGCCCAAATGGTA
AAGAACACAGTGAACCGTAAAGCCTTAAAGACCGAGCGCAAAGAAAAGTGAATCAGCTTCCAAGTGTGA
CTCTTGATGCTGACTGCAGGGAGACCGAGAACGTGGAGGTTTATTGAGAGGTGGGGCAGAAGATCTAG
TAAAGAGGATCCCCTTCAGATAATGGGCCACTTAAAGTGAAGATGGTGACCATTTTTCTGATGTGCAT
TTGCATAGCAAGGTTAAGCAATCTGATCCTGGTAAAATTTCTGAAAAAGGACTCTTTTTGAAAAACGGAA
AAGGCCAGAGCTGGACTCTGTAATGAACAGTGAAGTGAATCAATGGTGTAAATCAAGTGGTGCC
TAAAAAGCGGTGGCAGCGTTTAAACCAAAGGCGCACTAAACCTCGTAAGCGCATGAACAGATTTAAAGAG
AAAGAAAAGTCTGAGTGTGCCTTAGGGTCTTACTTCTAGTGACCCTGTGCAGGAGGGGGCGGGATGAGT
TTCCAGAGCATAGAATCCTTCAGCAAGCATACTTGAGGAACCACTGACAGAGCAAAATCATGCTGACTG
CTTAGATTCAGCTGGCCACGGTTAAATGTTTGTGATAAATCCAGTGCCAGCATTGGTGACATGGAAAAG
GAGCCAGGAATCCCAGTTTGACACCACAGGCTGAGCTCCCTGAACCAGCTGTGCGGTGAGAGAAAAG
GCCTTAGGAAGCAAGCAAGTGGCTTTTGAATATACAGAAGAATATGATCAGATATTTGCTCCTAAGAA
AAAACAAAAGAGGTACAGGAGCAGGTGACACAAGGTAAGTTCCCGCTGTGAAGAGGAAAAGCCTTACGCC
CGAGGTGATCTAGTGCTCAGAACAAGCAGGTGGACGAGAATTCTTTGATTTCAACCAAAGAGAGCCTC
CAGTTCTGAAAGGGAGGCTCCGTTTTTGGAGGGCCCTTGGCTCAGTCAGAACTTGAGGTTGGACATGC
TGAGTTGCCGAGCTGACCTTGTCTGTGCTGTGGCTCCGGAAGTCTCTCCACGGCTGCCCTTGTGCT
GAGGAATTGCTAGTTAAAACGCCAGGAAATATGAAAGTAAACGTCAAAGAAAACCAACTAAGAACTTC
TTGAATCCAATGATTTAGACCCTGGATTTATGCCAAGAAGGGGGACCTTGGCCTTTCTAAAAAGTGCTA
TGAAGCTGGTACCTGGAGAATGGCATAACTGAATCTTGTGCCACATCTTATTCAAAGATTTTGGTGG
GGCACTACCAAGATATTTGACAAGCCAAGGAAGCGAAAACGACAGAGGCATGCTGCAGCCAAGATGCAGT
GTAAAAAGTGAATAATGATGACTCGTCAAAGAGATTCCAGGCTCAGAGGGAGAACTAATGCCTCACAG
GACGGCCACAAGCCCAAGGAGACTGTTGAGGAAGGTGTAGAACACGATCCCGGGATGCCTGCCTCTAAA
AAAATGCAGGGTGAACCGGTGGAGGAGCTGCACTCAAGGAGAATGTCTGTGAGAATTTGAAAAATTTGG
GTGAGCTGCTGTTATGTGAGGCTCAGTGTGTGGGGCTTTCCACCTGGAGTGCCTTGGATTGACTGAGAT
GCCAAGAGGAAAATTTATCTGCAATGAATGTGCGACAGGAATCCATACCTGTTTTGTATGTAAGCAGAGT
GGGAAGATGTTAAAAGTGCCTTCTACCTTGTGTGAAAGTTTTACCATGAAGAGTGTGTCCAGAAGT
ACCCACCACTGTTATGCAGAACAAGGGCTTCCGGTGTCCCTCCACATCTGTATAACCTGTCATGCTGC
TAATCCAGCCAATGTTTTCTGCATCTAAAGTTCGGTTGATGCGCTGTGCGCTGTCCCTGTGGCATAACCAC
GCCAATGACTTTTGCCTGGCTGCTGGTCAAAGATCCTTGATCTAATAGTATCATCTGCCCTAATCACT
TTACCCCTAGGCGGGGCTGCCGAAATCATGAGCATGTTAATGTTAGTGGTGTCTTTGTGTCTCAGAAGG
AGGCAGCCTTCTGTGCTGTGATTCTTGCCTGCTGCTTTTTCATCGTGAATGCCTGAACATTGATATCCCT
GAAGGAAACTGGTATTGCAATGACTGTAAGCAGGCAAAAAGCCACACTACAGGGAGATTGTCTGGGTAA
AAGTTGGACGATACAGGTGGTGGCCAGCTGAGATCTGCCATCCTCGAGCTGTTCTTCCAACATTGATAA
GATGAGACATGATGTGGGAGAGTCCCAGTCTCTTTTTTGGATCTAATGACTATTTGTGGACTCACCAG
GCCCGAGTCTCCCTTACATGGAGGTGACGTGAGCAGCAAGGATAAGATGGGCAAGGAGTGGATGGGA
CATATAAAAAAGCTTTCAGGAAGCTGCAGCAAGTTTTGAGGAATTAAGGCCCAAAAAGAGCTAAGACA
GCTGCAGGAAGACCGAAAGAATGACAAGAAGCCACCACCTTATAAACATATAAAGGTAACCGTCCCTATT
GGCAGGGTACAGATCTTCACTGCAGACTTATCTGAAATACCCCGTTGCAACTGTAAGACTACTGATGAGA
ACCCCTGTGGGATAGACTCTGAATGCATCAACCGCATGCTGCTCTATGAGTGCCACCCACAGTGTGTCC
TGCCGGAGGGCGCTGTCAAACCAGTGCTTTTCCAAGCGCAATATCCAGAGGTTGAAATTTTCCGCACA
TTACAGCGGGGTTGGGTCTACGGACAAAAACAGATATAAAAAGGGTGAATTTGTGAATGAGTATGTGG

GTGAGCTTATAGATGAAGAAGAATGCAGAGCTCGAATTCGCTATGCTCAAGAACATGATATCACTAATTT
CTATATGCTCACCTAGACAAAGACCGAATCATTGATGCTGGTCCCAAAGGAAATATGCTCGGTTTCATG
AATCATTGCTGCCAGCCCAACTGTGAAACACAGAAGTGGTCTGTGAATGGAGATACCCGTGTAGGCCTTT
TTGCACTAAGTGACATTAAGCAGGCCTGAACTTACCTCAACTACAACCTAGAATGTCTTGGGAATGG
AAAGACTGTTTGCAAATGTGGAGCCCGAACTGCAGTGGCTTCTTGGGTGAAGGCCAAAGAATCAACCC
ATTGCCACGGAAGAAAAGTCAAAGAAATCAAGAAGAAGCAACAGGGAAGCGCAGGACCCAGGGTGAAA
TCACAAAGGAGCGAGAAGATGAGTGTTTAGTTGTGGGATGCTGGCCAGCTCGTCTCTGCAAGAACC
AGGCTGCCAAAAGTTTACCACGCAGACTGTCTCAATCTGACCAAGCGACCAGCAGGGAATGGGAATGT
CCGTGGCATCAGTGTGACATCTGCGGGAAGGAAGCAGCCTCCTTCTGTGAGATGTGCCCCAGCTCCTTTT
GTAAGCAGCATCGAGAAGGGATGCTTTTTCATTTCCAAACTGGATGGGCGTCTGTCTTGTACTGAGCATGA
CCCCTGTGGGCCAATCCTCTGGAACCTGGGGAGATCCGTGAGTATGTGCCTCCCCAGTACCGTGCCT
CCAGGGCCAAGCACTCACCTGGCAGAGCAATCAACAGGAATGGCTGCTCAGGCACCCAAATGTCAGATA
AACCTCTGTGACACCAACCAGATGCTGTGCTCTCCAAAAAGCTCTGGCAGGGACTTGTGAGAGGCC
ATTGCTACCTGAAAGACCTCTTGAGAGAACTGACTCCAGGCCCCAGCCTTAGATAAAGTGCAGAGACCTC
GCTGGGTGAGGACCAATCCCAATCCTTGGTTTCCAGCCAGAGGCCACTGGACAGGCCACCAGCAGTGG
CAGGACCAAGACCCAGCTAAGCGACAAACCCTCTCCAGTGACCAGCCAAAGCTCCTCACCTCAGTCAG
GTCCCAACCCTGAAAGACCTCTGGGGACGGCTGACCCAAGGCTGGATAAATCCATAGGTGCTGCCAGC
CCAAGGCCCAAGTCACTGGAGAAAACCTCAGTTCCTACTGGCCTGAGACTTCCGCCGCCAGACAGACTGC
TCATTACTAGCAGTCCCAAACCCAGACTTCAGACAGGCCTACTGACAAACCCCATGCCTCTTTGTCCCA
GAGACTCCACCTCCTGAGAAAGTACTATCAGCTGTGGTCCAGACCCTTGTAGCTAAAGAAAAAGCACTG
AGGCCTGTGGACCAGAATACTCAGTCAAAAAATAGAGCTGCTTTGGTGATGGATCTCATAGACCTAACTC
CTCGCCAGAAGGAGCGGGCAGCTTACCTCATCAGGTACACCACAGGCTGATGAGAAGATGCCAGTGT
GGAGTCAAGTTTATGGCCTGCCAGCAAAGTCTGGGGCATATGCCGAGAGCTGTTGAGAAAGGCTGTGTG
TCAGATCCTCTTACAGACATCTGGGAAAGCAGCAGCCCTTCCAGAGACCCTGGCAAGCTGTAAATCAC
TACCCAGGCCAGACTTCTTTCTCAGCCTCTGCAAGGCCTTTTTATATGAGCCAAACAACCTCAGGCCTC
AGGAAGAGCTTCTGCAGGGGCTGAGCAGACCCAGGGCCTCTTAGCCAATCCCCGGGCCTGGTGAAGCAG
GCGAAGCAGATGGTGGGAGGCCAGCAACTACCTGCACTTGCCGCAAGAGTGGGCAATCTTTAGGTCTC
TCGGGAAGGCCCCAGCCTCCCTCCCCTGAAGAAAAGAAGTTGGTAACCACAGAGCAAAGTCCCTGGGC
CCTGGGAAAAGCCTCATCAGGGCAGGGCTCTGGCCATAGTGGCTGGACAGACTGGCACAGTCTTGC
TGGTCTGCTGGGAGCACACAGACATTGGCACAGACTTGTGGTCTCTTGAAGAGGGCAAGACCCCAAC
CAGAGCAAATACACTTCCAGCTCTTAACCAGGCTCCTTCCAGTACAAGTGTGAGAATCAGAACAGAA
G

ACGCGTACGCGGCCGCTCGAG - GFP Tag - GTTTAA

Protein Sequence: >RG218297 representing NM_172349
 Red=Cloning site Green=Tags(s)

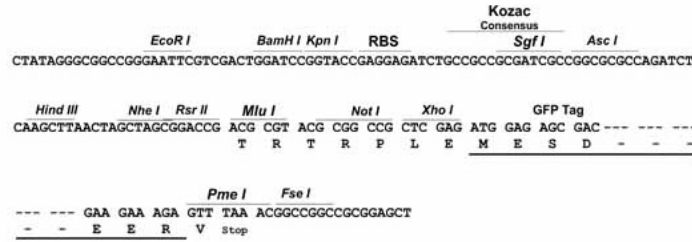
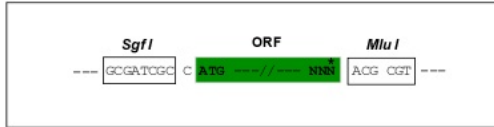
MPLKTRTALSDDPDSSTSTLGNMLELPGTSSSSTSQELPFCQPKKSTPLKYEVDLIWAKFKRRPWWPC
 RICSDPLINTHSMKVSNNRPYRQYYVEAFGDPSERAWVAGKAIVMFEGRHQFEELPVLRRRGKQKEKGY
 RHKVPQKILSKWEASVGLAEQYDVPKGSKNRKCIPGSIKLDSEEDMPFEDCTNDPESEHDLNGLKSL
 AFDSEHSADKEKPCAKSRARKSSDNPKRTSVKKGHIQFEAHKDERRGKIPENLGLNFISGDISDTQASN
 ELSRIANSLTGSNTAPGSFLFSSCGKNTAKKEFETSNGDSLLGLPEGALISKCSREKNKQRSLVCGSKV
 KLCYIGAGDEEKRSDSISICTTSDDGSSDLPIEHSSESDNSVLEIPDAFDRTENMLSMQKNEKIKYSRF
 AATNTRVKAKQKPLISNSHTDHLMGCTKSAEPTETSQVNLSDLKASTLVHKPQSDFTNDALSPKFNLS
 SISENSLIKGGANQALLHHSKQPKFRSFKCKHKNPMAEPPVINEECSLKCCSSDTKGSPLASISK
 SGKVDGLKLLNMMHEKTRDSSDIETAVVKHVLSELKELSYRSLGEDVSDSGTSKPSKPLLFSSASSQNH
 PIEPDYKFSTLLMMLKDMHDSKTKEQRLMTAQNLSYRSPGRGDCSTNSPVGVSKVLVSGGTHNSEKKG
 DGTQNSANPSPSGDSALSGELASLPGLLSDKRDLPASGKSRSDCVTRRNCGRSKPSSKLRDAFSAQMV
 KNTVNRKALKTERKRRLNQLPSVTLDVAVLQGDREGRGSLRGGADPSEKEDPLQIMGHLTSEDGDHFDVH
 FDSKVKQSDPGKISEKGLSFENKGPGLDSVMNSEDELNGVNQVVPKRWQRLNQRRTKPRKRMNRFKE
 KENSECAFRVLLPSPDVQEGRDEFPEHRTPSASILEEPLTEQNHADCLDSAGPRLNVCDKSSASIGDMEK
 EPGIPSLTPQAELEPAVRSEKKRLRKPSSKWLLEYTEEYDQIFAPKKKQKQVQEVHKVSSRCEESLLA
 RGRSSAQNKQVDENSLISTKEEPPVLEREAPFLEGLAQSELGGHAELPQLTSLVPAVEVSPRPALES
 EELLVKTPGNYESKRQRKPTKLLLESNLDPGFMPKKGDLGLSKKCYEAGHLENGITESCATSYSKDFGG
 GTTKIFDKPRKRQRHAAAKMQCKKVNDDSSKEIPGSEGLMPHRTATSPKETVEEGVEHDPGMPASK
 KMQGERGGGAALKENVCQKCEKLGELLLCEAQCCGAFHLECLGLTEMPRGKFCNECRTGIHTCFVCKQS
 GEDVRCRLLPLCGKFYHEECVQKYPPTVMQNKGFRCSLHICITCHAANPANVSASKRGLMRCVRCPVAYH
 ANDFCLAAGSKILASNSIICPNHFTPRRGCNHEHVNVSWCFVCEGGSLCCDSCPAAFHRECLNIDIP
 EGNWYCNDCAGKKPHYREIVWVKVGRYRWPAEICHPRAVPSNIDKMRHDVGEFFVLFSGSNDYLWTHQ
 ARVFPYMEGDVSSKDKMGKVDGTYKKALQEAARFEELKAQKELRQLQEDRKNDKPPPYKHKIKVNRPI
 GRVQIFTADLSEIPRCNCKATDENPCGIDSECINRMLLYECHPTVCPAGGRCQNQCFSKRQYPEVEIFRT
 LQRGWGLRTKTDIKKGEFVNEYVGELIDEEECRARIRYAQEHDTNFYMLTLDKDRIIDAGPKGNARFM
 NHCCQPNCEQKWSVNGDTRVGLFALSDIKAGTELFNYNLECLGNGKTVCKCGAPNCSGFLGVRPKNQP
 IATEEKSKKFKKKQQGRRTQGEITKEREDFCSCGDAGQLVSCKKPGCPKVVYHADCLNLTKRPAGKWE
 PWHQCDICGKEAASFCEMCPSSFCKQHREGMLFISKLDGRLSCTEHDPCGNPLEPGEIREYVPPVPLP
 PGPSTHLAEQSTGMAAQAPKMSDKPPADTNQMLSLSKKALAGTCQRPLPERPLERTDSRQPLDKVRDL
 AGSGTKSQSLVSSQRPLDRPPAVAGPRPQLSDKPSVTPSPSSSPSVRSQPLERPLGTADPRLDKSIGAAS
 PRPQSLEKTSVPTGLRLPPDRLLITSSPKPQTSRPTDKPHASLSQRLPPPEKVL SAVVQTLVAKEKAL
 RPVDQNTQSKNRAALVMDLIDLTPRQKERAASPHQVTPQADEKMPVLESSWPASKGLGHMPRAVEKGCV
 SDPLQTSGKAAAPSEDPWQAVKSLTQARLLSQPPAKAFLYEPTTQASGRASAGAEQTPGPLSQSPGLVKQ
 AKQMVGGQQLPALAAKSGQSFRLGKAPASLPTEEKKLVTEEQSPWALGKASSRAGLWPIVAGQTLAQSC
 WSAGSTQTLAQTCWSLGRGQDPKPEQNTLPALNQAPSSHKCAESEQK

TRTRPLE - GFP Tag - V

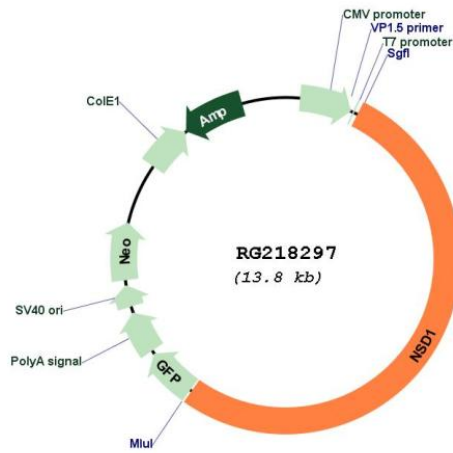
Restriction Sites: SgfI-MluI

Cloning Scheme:

Cloning sites used for ORF Shutting:



Plasmid Map:



ACCN: NM_172349
 ORF Size: 7281 bp

OTI Disclaimer: Due to the inherent nature of this plasmid, standard methods to replicate additional amounts of DNA in E. coli are highly likely to result in mutations and/or rearrangements. Therefore, OriGene does not guarantee the capability to replicate this plasmid DNA. Additional amounts of DNA can be purchased from OriGene with batch-specific, full-sequence verification at a reduced cost. Please contact our customer care team at custsupport@origene.com or by calling 301.340.3188 option 3 for pricing and delivery.

The molecular sequence of this clone aligns with the gene accession number as a point of reference only. However, individual transcript sequences of the same gene can differ through naturally occurring variations (e.g. polymorphisms), each with its own valid existence. This clone is substantially in agreement with the reference, but a complete review of all prevailing variants is recommended prior to use. [More info](#)

OTI Annotation: This clone was engineered to express the complete ORF with an expression tag. Expression varies depending on the nature of the gene.

Components: The ORF clone is ion-exchange column purified and shipped in a 2D barcoded Matrix tube containing 10ug of transfection-ready, dried plasmid DNA (reconstitute with 100 ul of water).

Reconstitution Method:

1. Centrifuge at 5,000xg for 5min.
2. Carefully open the tube and add 100ul of sterile water to dissolve the DNA.
3. Close the tube and incubate for 10 minutes at room temperature.
4. Briefly vortex the tube and then do a quick spin (less than 5000xg) to concentrate the liquid at the bottom.
5. Store the suspended plasmid at -20°C. The DNA is stable for at least one year from date of shipping when stored at -20°C.

RefSeq: [NM_172349.2](#), [NP_758859.1](#)

RefSeq Size: 12213 bp

RefSeq ORF: 7284 bp

Locus ID: 64324

UniProt ID: [Q96L73](#)

Cytogenetics: 5q35.3

Protein Families: Druggable Genome

Protein Pathways: Lysine degradation

Gene Summary:

This gene encodes a protein containing a SET domain, 2 LXXLL motifs, 3 nuclear translocation signals (NLSs), 4 plant homeodomain (PHD) finger regions, and a proline-rich region. The encoded protein enhances androgen receptor (AR) transactivation, and this enhancement can be increased further in the presence of other androgen receptor associated coregulators. This protein may act as a nucleus-localized, basic transcriptional factor and also as a bifunctional transcriptional regulator. Mutations of this gene have been associated with Sotos syndrome and Weaver syndrome. One version of childhood acute myeloid leukemia is the result of a cryptic translocation with the breakpoints occurring within nuclear receptor-binding Su-var, enhancer of zeste, and trithorax domain protein 1 on chromosome 5 and nucleoporin, 98-kd on chromosome 11. Multiple transcript variants encoding distinct isoforms have been identified for this gene. [provided by RefSeq, Sep 2018]