

## Product datasheet for **RG218291**

### ATAD2 (NM\_014109) Human Tagged ORF Clone

#### Product data:

Product Type:	Expression Plasmids
Product Name:	ATAD2 (NM_014109) Human Tagged ORF Clone
Tag:	TurboGFP
Symbol:	ATAD2
Synonyms:	ANCCA; CT137; PRO2000
Vector:	pCMV6-AC-GFP (PS100010)
E. coli Selection:	Ampicillin (100 ug/mL)
Cell Selection:	Neomycin
ORF Nucleotide Sequence:	>RG218291 representing NM_014109 Red=Cloning site Blue=ORF Green=Tags(s)

TTTTGTAATACGACTCACTATAGGGCGGCCGGGAATTCGTCGACTGGATCCGGTACCGAGGAGATCTGCC  
GCC**GCGATCGC**C

ATGGTGGTTCTCCGCAGCAGCTTGGAGCTGCACAACCACTCCGCGGCCTCGGCCACGGGCTCCTTGGACC  
TGTCCAGTGACTTCTCAGTCTGGAGCACATCGGCCGGAGGCGGCTCCGCTCGGCCGGCGCGCCGAGAA  
GAAACCGCGGGCACCACAGCCAAAGCGGGCGATGGGTATCAGTTAAGGAAGTTGAAACCTACCACCGG  
ACACGTGCTTTAAGATCTTTGAGAAAAGATGCACAGAATTCCTCAGATTCAGTTTTGAGAAGAATGTGG  
AAATAACGGAGCAACTTGCTAATGGCAGGCATTTTACAAGGCAGTTGGCCAGACAGCAGGCTGATAAAAA  
AAAAGAAGAGCACAGAGAAGACAAAGTATTCCAGTTACTCGGTCATTGAGGGCTAGAAAACATCGTTCAA  
AGTACAGAACACTTACATGAAGATAATGGTGATGTTGAAGTGCCTCGAAGTTGTAGGATTAGAAGTCGTT  
ATAGTGGTGATAAACCAGTCCATGCTGTTTGACAACTTATAACTAACACTGCTGAAGCTGTACTTCAAAA  
AATGGATGACATGAAGAAGATGCGTAGACAGCGAATGAGAGAAGTTGAAGACTTGGGAGTGTAAATGAA  
ACAGAAGAAAGCAATCTTAATATGTACACAAGAGGAAAACAGAAAGATATCAAGAAGTATGAAGAAA  
CAACTGATAATCAAGAAGCAGTGTGGAGTCATCTGAAGAGGGTGAAGACCAAGAACATGAAGATGATGG  
TGAAGATGAAGATGATGAAGATGATGATGATGATGACGATGATGATGATGATGATGATGATGAAGATGAT  
GAAGATGAAGAAGATGGAGAAGAGAATCAGAAGCGATATTATCTTAGACAGAGAAAAGCTACTGTGTT  
ACTATCAGGCTCCATTGGAAAAACCTCGTCACCAGAGAAAAGCCCAACATATTTTATAGTGGCCAGCTTC  
TCCTGCAAGACCAAGATACCGATTATCTCCGCAGGACCAAGAAGTCCTTACTGTAAACGAATGAACAGG  
CGAAGGCATGCAATCCACAGTAGTGACTCGACTTCATCTTCTCCTCTGAAGATGAACAGCACTTTGAGA  
GGCGGAGGAAAAGGAGTCGTAATAGGGCTATCAATAGGTGCCTCCCACTAAATTTTCGGAAGATGAATT  
AAAAGGCATTTATAAAGATCGAATGAAAATTGGAGCAAGCCTTGCCGATGTTGATCCAATGCAACTAGAT  
TCTTCAGTACGATTTGATAGTGTGGTGGCCTGTCTAATCATATAGCAGCTCTAAAAGAGATGGTGGTGT  
TTCCATTACTTTATCCAGAAGTCTTTGAAAAATTTAAAATTCAACCCCAAGAGTTGTTTGTGTTTATGG  
GCCACCTGGAAGTGAAGACTCTGTTGCCAGAGCACTTGCCAAATGAGTGACAGTCAAGGGGATAAAAAGA  
GTAGCATTTTTATGAGGAAAGGTGCTGATTGTCTAAGTAAATGGGTAGGAGAATCTGAAAGACAGCTAC



[View online »](#)

GATTGCTGTTTGATCAGGCCTATCAGATGCGCCATCAATTATTTTTTTGACGAAATTGATGGTCTGGC  
TCCAGTACGGTCAAGCAGGCAAGATCAGATTCACAGTTCTATTGTTCCACCCTGCTAGCTCTTATGGAT  
GGATTGGACAGCAGAGGGGAAATGTGGTCATTGGTGCTACGAACAGGCTAGATTCTATAGATCCTGCTT  
TACGAAGGCTGGTCGCTTTGATAGAGAATTCCTCTTTAGCCTGCCTGATAAAGAGGCTCGAAAAGAGAT  
TCTAAAGATTCACACCAGGGATTGGAATCCCAAACACTGGACACATTTTTAGAAGAGCTAGCAGAAAAC  
TGTGTTGGACTGTGGAGCAGATATTAATCAATATGTGTGAAAGCTGCTTTATGTGCTTTACGACGAC  
GCTACCACAGATCTATACCACTAGTGAGAACTGCAGTTGGATCTCTCTTCAATTAATATCTCAGCTAA  
GGATTTTCGAGGTAGCTATGCAAAAGATGATACCAGCCTCCCAAAGAGCTGTGACATCACCTGGGCAGGCA  
CTGTCCACCGTTGTGAAACCACTCCTGCAAAACACTGTTGACAAGATTTTAGAAGCCCTGCAGAGAGTAT  
TTCCACATGCAGAATTCAGAACAATAAAACATTAGACTCAGATATTTCTTGCTCTGTAGAAAAGTGA  
CTTGGCTTACAGTGATGATGATGTTCCATCAGTTTATGAAAATGGACTTTCTCAGAAAATCTTCTCATAAG  
GCAAAAGACAATTTAATTTTCTTCATTTGAATAGAAATGCTTGTACCAACCTATGTCTTTTCGACCAA  
GAATATTGATAGTAGGAGAACCAGGATTTGGGCAAGGTTCTCACTTGGCACCAGCTGTCATTATGCTTT  
GGAAAAGTTTACTGTATACATTAGACATTCCTGTTCTTTTTGGAGTTAGTACTACATCCCCTGAAGAA  
ACATGTGCCCAGGTGATTCGTGAAGCTAAGAGAACAGCACCAAGTATAGTGTATGTTCTCATATCCACG  
TGTGGTGGGAAATAGTTGGACCGACACTTAAAGCCACATTTACCACATTATTACAGAATATTCCTTCATT  
TGCTCCAGTTTTACTACTTGCAACTTCTGACAAACCCATTCCGCTTTGCCAGAAGAGGTGCAAGAATTG  
TTTATCCGTGATTATGGAGAGATTTTAAATGTCCAGTTACCGGATAAAGAAGAACGGACAAAATTTTTTG  
AAGATTTAATCTAAAACAAGCTGCTAAGCCTCTATATCAAAAAAGAAAGCAGTTTTGCAGGCTTTGGA  
GGTACTCCCAGTAGCACCACCACCTGAGCCAAGATCACTGACAGCAGAAGAAGTAAAACGACTAGAAGAA  
CAAGAAGAAGATACATTTAGAGAAGTGGGATTTTCTTAAAGAAATGTTACACATAGGCTTGCTATTGACA  
AGCGATTCCGAGTGTTTACTAAGCCTGTTGACCCTGATGAGGTTCCCTGATTATGCACTGTAATAAGCA  
ACCAATGGACCTTTCATCTGTAATCAGTAAAATGATCTACACAAGTATCTGACTGTGAAAGACTTTTG  
AGAGATTTGATCTAATCTGTAGTAATGCCTTAGAATAACAATCCAGATAGAGATCCTGGAGATCGTCTTA  
TTAGGCATAGAGCCTGTGCTTTAAGAGATACTGCCTATGCCATAATTAAGAAGAAGTGTGAGAGACTT  
TGAGCAGCTCTGTGAAGAAATTCAGGAATCTAGAAAAGAAAAGAGGTTGTAGCTCCTCAAATATGCCCG  
TCTTACTACCATGTGATGCCAAAGCAAAATTCCTACTTGTGGTGATAAAAAGATCAGACCCAGAGCAGA  
ATGAAAAGCTAAAGACACCGAGTACTCCTGTGGCTTGCAGCACTCCTGCTCAGTTGAAGAGGAAAATTCG  
CAAAAAGTCAAAGTACTTAGGCACCATAAAAAAGCGAAGGAAGATTTACAGGCAAAGGATGATAGC  
CAGAATGCCATAGATCACAAAATGAGAGTGATACAGAGGAACTCAAGACACAAGTGTAGATCATAATG  
AGACCGAAAACACAGGAGAGTCTTCGGTGAAGAAAATGAAAAACAGCAAAATGCCTCTGAAAGCAAAGT  
GGAATTGAGAAAATAATCAAATACTTGTAAATATAGAGAATGAGCTTGAAGACTCTAGGAAGACTACAGCA  
TGTACAGAATTGAGAGACAAGATTGCTTGAATGGAGATGCTTCTAGCTCTCAGATAATACATATTTCTG  
ATGAAAATGAAGGAAAAGAAATGTGTGTTCTGCGAATGACTCGAGCTAGACGTTCCCAGGTAGAACAGCA  
GCAGCTCATCACTGTTGAAAAGGCTTTGGCAATCTTTCTCAGCCTACACCCTCACTTGTGTGGATCAT  
GAGCGATTAATAAATCTTTTGAAGACTGTTGTTAAAAAAGTCAAAACTACAACATATTTTCAGTTGGAAA  
ATTTGTATGCAGTAATCAGCCAATGATTTATCGGCATCGCAAGGACCATGATAAAACATCACTTATTCA  
GAAAATGGAGCAAGAGGTAGAAAACCTCAGTTGTTCCAGA

ACGCGTACGCGGCCGCTCGAG - GFP Tag - GTTTAA

Protein Sequence: >RG218291 representing NM\_014109  
 Red=Cloning site Green=Tags(s)

MVVLRSSLELHNHSAASATGSLDLSDFLSLEHIGRRRLRSAGAAQKPAATTAKAGDGSVKEVETYHR  
 TRALRSLRKDAQNSSDSSFENVEITEQLANGRHFTRQLARQQADKKKEEHREDKVIPVTRSLRARNIVQ  
 STEHLHEDNGDVEVRRSCRIRSRYSQVNSMLFDKLITNTAEAVLQKMDMKMRQRMRLEDLGVFNE  
 TEEENLNMVTRGKQKDIQRTDEETTDNQEGSVESSEEGEDQEHEDDGEDEDDDDDDDDDDDDDD  
 EDEEDGEEENQKRYLQRKATVYVYQAPLEKPRHQKPNIFYSGPASPAPRPRYLSSAGPRSPYCKRMNR  
 RRHAIHSSDSTSSSSSEDEQHFERRRKRSRNRRAINRCLPLNFRKDELKGIYKDRMKIGASLADVDPMLD  
 SSVRFDSVGLSNHIAALKEMVVFLLYPEVFEKFKIQPPRGCLFYGPPGTGKTLVARALANECSQGDKR  
 VAFFMRKGADCLSKWVGESERQLRLLFDQAYQMRPSIIFFDEIDGLAPVRSRQDQIHSSIVSTLLALMD  
 GLDSRGEIVVIGATNRLDSIDPALRRPGRFDREFLSLPDKEARKEILKIHDRWNPKPLDTFLEELAEN  
 CVGYCGADIKSICAEALCALRRRYPQIYTTSEKLQLDSSINISAKDFEVAMQKMPASQRAVTPGQA  
 LSTVVKPLLQNTVDKILEALQRVFPFAEFRTNKTLDSDISCPLESDLAYSDDDVPSVYENGLSQKSSHK  
 AKDNFNFLHLNRNACYQPMFRPRILIVGEPGFQGSHLAPAVIHAKLFTVYTLDIPVLFVGVSTTSPEE  
 TCAQVIREAKRTAPSIYVPHIHVWWEIVGPTLKATFTLLQNIQPSFAPVLLATSDKPHSALPEEVQEL  
 FIRDYGEIFNVQLPDKEERTKFFEDLILKQAAKPPISKKKAVLQALEVLPVAPPPEPRSLTAEVVKREE  
 QEEDTFRELRIFLRNVTHLAIDKFRVFTKPVDPDEVPDYVTVIKQPMDLSSVISKIDLHKYLVKDYD  
 RDIDLICSNALYNPDRDPGDRILRHRACALRDTAYAIIKEELDEDFEQLCEEIQESRKKRGCSSSKYAP  
 SYHHVMPKQNSTLVGDKRSDPEQNEKLTPTSTPVACSTPAQLKRRKIRKSNWYLGTIKKRRKISQAKDSS  
 QNAIDHKIESDTEETQDTSVDHNETGNTGESSVEENEKQONASESKLELRNNSNTCNIENELEDSTRKTTA  
 CTELRDKIACNGDASSQIIHISDENEGKEMCVLRMTRARRSQVEQQQLITVEKALAILSQPTPSLVVDH  
 ERLKNLLKTVVKKSQNYNIFQLENLYAVISQCIYRHRKDHDKTSLSIQMEQEVENFSCSR

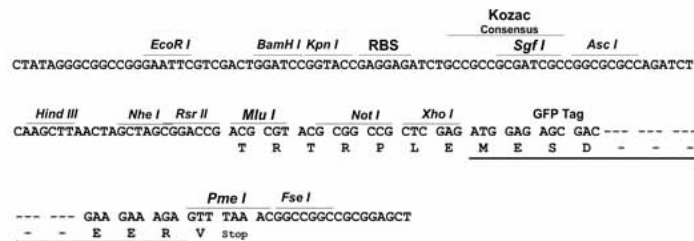
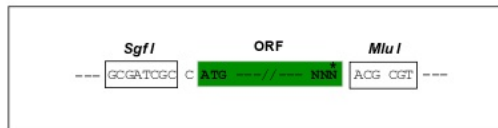
TRTRPLE - GFP Tag - V

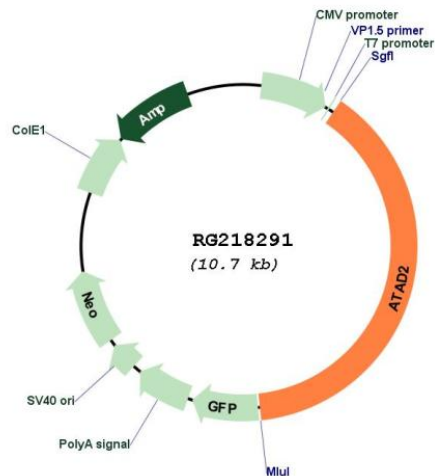
Restriction Sites:

Sgfi-MluI

Cloning Scheme:

Cloning sites used for ORF Shutting:



**Plasmid Map:**


**ACCN:** NM\_014109

**ORF Size:** 4170 bp

**OTI Disclaimer:** The molecular sequence of this clone aligns with the gene accession number as a point of reference only. However, individual transcript sequences of the same gene can differ through naturally occurring variations (e.g. polymorphisms), each with its own valid existence. This clone is substantially in agreement with the reference, but a complete review of all prevailing variants is recommended prior to use. [More info](#)

**OTI Annotation:** This clone was engineered to express the complete ORF with an expression tag. Expression varies depending on the nature of the gene.

**RefSeq:** [NM\\_014109.2](#), [NP\\_054828.2](#)

**RefSeq Size:** 4916 bp

**RefSeq ORF:** 4173 bp

**Locus ID:** 29028

**Cytogenetics:** 8q24.13

**Domains:** BROMO, AAA, AAA

**Protein Families:** Druggable Genome

**Gene Summary:** A large family of ATPases has been described, whose key feature is that they share a conserved region of about 220 amino acids that contains an ATP-binding site. The proteins that belong to this family either contain one or two AAA (ATPases Associated with diverse cellular Activities) domains. AAA family proteins often perform chaperone-like functions that assist in the assembly, operation, or disassembly of protein complexes. The protein encoded by this gene contains two AAA domains, as well as a bromodomain. [provided by RefSeq, Jul 2008]