

Product datasheet for **RG218258**

MYH10 (NM_005964) Human Tagged ORF Clone

Product data:

Product Type:	Expression Plasmids
Product Name:	MYH10 (NM_005964) Human Tagged ORF Clone
Tag:	TurboGFP
Symbol:	MYH10
Synonyms:	NMMHC-IIB; NMMHCB
Mammalian Cell Selection:	Neomycin
Vector:	pCMV6-AC-GFP (PS100010)
E. coli Selection:	Ampicillin (100 ug/mL)
ORF Nucleotide Sequence:	>RG218258 representing NM_005964 Red=Cloning site Blue=ORF Green=Tags(s)

TTTTGTAATACGACTCACTATAGGGCGGCCGGAATTCGTCGACTGGATCCGGTACCGAGGAGATCTGCC
GCC**CGATCGCC**

ATGGCGCAGAGAAGCTGGACTCGAGGATCCAGAGAGGTATCTCTTTGTGGACAGGGCTGTCATCTACAACC
CTGCCACTCAAGCTGATTGGACAGCTAAAAAGCTAGTGTGGATTCCATCAGAACGCCATGGTTTTGAGGC
AGCTAGTATCAAAGAAGAACGGGAGATGAAGTTATGGTGGAGTTGGCAGAGAATGGAAGAAAGCAATG
GTCAACAAAGATGATATTCAGAAGATGAACCCACCTAAGTTTTCCAAGGTGGAGGATATGCCAGAATTGA
CATGCTTGAATGAAGCTCCGTTTTACATAATCTGAAGGATCGCTACTATTCAGGACTAATCTATACTTA
TTCTGGACTCTTCTGTGTAGTTATAAACCTTACAAGAATCTTCCAATTTACTCTGAGAATATTATTGAA
ATGTACAGAGGGAAGAAGCGTCATGAGATGCCTCCACACATCTATGCTATATCTGAATCTGCTTACAGAT
GCATGCTTCAAGATCGTGAAGCAGTCAATCTTTGCACGGGTGAGTCAGGTGCTGGGAAGACAGAAAA
TACAAAGAAAGTTATTCAGTACCTTGCCATGTTGCTTCTCACATAAAGGAAGAAAGGACCATAATATT
CCTGGGAACTTGAACGGCAGCTTTTGAAGCAATCCAATCTGGAATCATTGGAAATGCGAAGACTG
TGAAAAATGATAACTCATCTCGTTTTGGCAAATTTATTCGGATCACTTTGATGTAAGTGGCTATATCGT
TGGGCGCAACATTGAAACATACCTTCTGGAAAAGTCTCGTGTCTCGTCAAGCAAAAGATGAACGTA
TTTCATATCTTTTACCAGTTGTTATCTGGAGCAGGAGAACACCTAAAGTCTGATTTGCTTCTTGAAGGAT
TTAATAACTACAGTTTTCTCTCAATGGCTATATTCTATTCCGGGACAGCAAGACAAAGATAATTTCCA
GGAGACCATGGAAGCAATGCACATAATGGGCTTCTCCCATGAAGAGATTCTGTCAATGCTTAAAGTAGTA
TCTTCAGTGCTACAGTTTGGAAATATTTCTTTCAAAAAGGAGAGAAATACTGATCAAGCTTCCATGCCAG
AAAATACAGTTGCGCAGAAGCTCTGCCATCTTCTGGGATGAATGTGATGGAGTTTACTCGGGCCATCCT
GACTCCCCGGATCAAGGTGCGCCGAGACTATGTGCAAAAAGCCCAGACCAAAAGAACAGGCAGATTTTGA
GTAGAAGCATTGGCAAAAGCTACCTATGAGCGGCTCTTTCGCTGGCTCGTTCATCGCATCAATAAAGCTC
TGGATAGGACAAACGTGAGGAGCATCTTTCATTGGAATCCTGGATATTGCTGGATTTGAAATTTTTGA
GCTGAACCTCTTGAACAACTTTGCATCAACTACCAATGAGAAGCTGCAGCAGCTGTTCAACCACACC



[View online >](#)

ATGTTTATCCTAGAACAAGAGGAATACCAGCGCAAGGCATCGAGTGGAACCTCATCGATTCGGGCTGG
ATCTGCAGCCATGCATCGACCTAATAGAGAGACCTGCGAACCCCTCCTGGTGTACTGGCCCTTTTGGATGA
AGAATGCTGGTCCCTAAAGCCACAGATAAAACCTTTGTTGAAAACTGGTTCAAGAGCAAGGTTCCAC
TCCAAGTTTCAGAAACCTCGACAATTAAGACAAAGCTGATTTTTGCATTATACATTATGCAGGGAAGG
TGGACTATAAGGCAGATGAGTGGCTGATGAAGAATATGGACCCCTGAATGACAACGTGGCCACCCTTTT
GCACCAGTCATCAGACAGATTTTGGCAGAGCTTTGAAAAGATGTGGACCGTATCGTGGTCTGGATCAA
GTCACTGGTATGACTGAGACAGCTTTTGGCTCCGCATATAAAACCAAGAAGGGCATGTTTTGTACCGTTG
GGCAACTCTACAAGAATCTCTACCAAGCTGATGGCAACTCTCGAAACACCAACCTAACTTTGTTCG
TTGTATCATTCCAAATCACGAGAAGAGGGCTGGAAAATTGGATCCACACCTAGTCTAGATCAGCTTCGC
TGTAATGGTGTCTGGAAGGGATCCGAATCTGTGCGCCAGGGCTCCCTAACCGAATAGTTTTCCAGGAAT
TCAGACAGAGATATGAGATCCTAACTCCAAATGCTATTCTAAAGGTTTTATGGATGGTAAACAGGCCTG
TGAACGAATGATCCGGGCTTTAGAATTGGACCCAACTGTACAGAATTGGACAGAGCAAGATATTTTTT
AGAGCTGGAGTTCTGGCACACTTAGAGGAAGAAAGAGATTTAAAAATCACCGATATCATTATCTTCTCC
AGGCCGTTTGCAGAGGTTACCTGGCCAGAAAGGCCTTTGCCAAGAAGCAGCAGCAACTAAGTGCCTTAAA
GGTCTTGACGCGAACTGTGCCGCTACCTGAAATTACGGCACTGGCAGTGGTGGCGAGTCTTACAAGG
GTGAAGCCGCTTCTACAAGTGAAGTGCAGGAGGAGAACTTACAGCCAAAGATGAAGAGCTGTTGAAGG
TGAAGGAGAAGCAGACGAAGGTGGAAGGAGAGCTGGAGGAGATGGAGCGGAAGCACCAGCAGCTTTAGA
AGAGAAGAATATCCTTGCAGAACAACCTACAAGCAGAGACTGAGCTCTTGTGCTGAAGCAGAAGAGATGAGG
GCAAGACTTGCTGCTAAAAAGCAGGAATTAAGAAGAGATTTACATGACTTGGAGTCTAGGGTTGAAGAAG
AAGAAGAAAGAAACCAATCCTCCAAAATGAAAAGAAAAAATGCAAGCAGATATTCAGGACCTGGAAGA
ACAGCTAGACGAGGAGGAAGGGGCTCGGCAAAAGCTGCAGCTGGAAAAGGTGACAGCAGAGGCAAGATC
AAGAAGATGGAAGAGGAGATTCTGCTTCTCGAGGACCAAAATCCAAGTTCATCAAGAAAGAAACTCA
TGAAGATCGCATTGCTGAGTTCCTCTCAGCTGGCTGAAGAGGAAGAAAAGGGCAAAACTTGCCCAA
AATCAGGAATAAGCAAGAAGTGATGATCTCAGATTTAGAAGAACCCTTAAAGAAGGAAGAAAAGACTCGT
CAGGAACTGGAAGGCAAAAGAAAACCTGACGGGAGACGACCGACCTGCAGGACCAGATCGCAGAGC
TGCAGGCGCAGATTGATGAGCTCAAGCTGCAGCTGGCCAAGAAGGAGGAGGAGTGCAGGGCGCACTGGC
CAGAGGTGATGATGAAACACTCCATAAGAACAATGCCCTTAAAGTTGTGCGAGAGCTACAAGCCAAATT
GCTGAACCTCAGGAAGACTTTGAATCCGAGAAGGCTTACGGAACAAGGCCGAAAAGCAGAAAAGGGACT
TGAGTGAGGAAGCTGGAAGCTCTGAAAACAGAGCTGGAGGACACGCTGGACACCACGGCAGCCAGCAGGA
ACTACGTACAAAACGTGAACAAGAAGTGGCAGAGCTGAAGAAAGCTCTTGAGGAGGAAACTAAGAACCAT
GAAGCTCAAATCCAGGACATGAGACAAAGACACGCAACAGCCCTGGAGGAGCTCTCAGAGCAGCTGGAAC
AGGCCAAGCGGTTCAAAGCAAATCTAGAGAAGAACAAGCAGGGCCTGGAGACAGATAACAAGGAGCTGGC
GTGTGAGGTGAAGGTCTGCAGCAGGTCAGGCTGAGTCTGAGCAACAAGGGAAGAAGCTCGACGCGCAG
GTCCAGGAGCTCCATGCCAAGGTCTCTGAAGGCGACAGGCTCAGGGTGGAGCTGGCGGAGAAAGCAAGTA
AGCTGCAGAAATGAGCTAGATAATGTCTCCACCCTTCTGGAAGAAGCAGAGAAGAAGGGTATTAATTTGC
TAAGGATGCAGCTAGTCTTGAGTCTCAACTACAGGATACACAGGAGCTTCTTTCAGGAGGAGACACGCCAG
AACTAAACCTGAGCAGTCGGATCCGGCAGCTGGAAGAGGAGAAGAACAGTCTTTCAGGAGCAGCAGGAGG
AGGAGGAGGAGGCCAGGAAGAACCTGGAGAAGCAAGTGTGGCCCTGCAGTCCCAGTTGGCTGATACCAA
GAAGAAAGTAGATGACGACCTGGGAACAATTGAAAGTCTGGAAGAAGCCAAGAAGAAGCTTCTGAAGGAC
GCGGAGGCCCTGAGCCAGCGCCTGGAGGAGAAGGCACTGGCGTATGACAAACTGGAGAAGACCAAGAACC
GCCTGCAGCAGGAGCTGGACGACCTCACGGTGGACCTGGACCACCAGCGCCAGGTCGCTCCAACCTTGA
GAAGAAGCAGAAGAAGTTTGACCAGCTGTAGCAGAAGAGAAGAGCATCTCTGCTCGCTATGCCGAAGAG
CGGGACCCGGCCGAAGCCGAGGCCAGAGAGAAAGAAACCAAGCCCTGTCACTGGCCCGGCCCTCGAGG
AAGCCCTGGAGGCCAAGGAGGAGTTTGAAGGCAGAAACAAGCAGCTCCGAGCAGACATGGAAGACCTCAT
GAGCTCCAAGATGATGTGGAAAAACGTTTACGAACTTAAAAATCCAACGGGCCCTAGAGCAGCAG
GTGGAGGAAATGAGGACCAGCTGGAGGAGCTGGAAGACGAACTCCAGGCCACGGAAGATGCCAAGCTTC
GTCTGGAGGTCAACATGCAGGCCATGAAGGCGCAGTTCGAGAGAGACCTGCAAACCAGGGATGAGCAGAA
TGAAGAGAAGAAGCGGCTGCTGATCAAACAGGTGCGGGAGCTCGAGGCGGAGCTGGAGGATGAGAGGAAA
CAGCGGGCGCTTGTGTAGCTTCAAAGAAAAAGATGGAGATAGACCTGAAGGACCTCGAAGCCCAATCG
AGGCTGCGAACAAGCTCGGGATGAGGTGATTAAGCAGCTCCGCAAGCTCCAGGCTCAGATGAAGGATTA
CCAACGTGAATTAGAAGAAGCTCGTGATCCAGAGATGAGATTTTTGCTCAATCCAAGAGAGTGAAGG
AAATTGAAGAGTCTGGAAGCAGAAATCCTTCAATTGCAGGAGGAACTTGCTCATCTGAGCGAGCCCGCC

GACACGCCGAGCAGGAGAGAGATGAGCTGGCGGACGAGATCACCAACAGCGCCTCTGGCAAGTCCGCGCT
 GCTGGATGAGAAGCGGCGTCTGGAAGCTCGGATCGCACAGCTGGAGGAGGAGCTGGAAGAGGAGCAGAGC
 AACATGGAGTGTCTAACGACCGCTTCCGCAAGACCCTCTACAGGTGGACACTGAACGCCGAGCTAG
 CAGCCGAGCGCAGCGCCGCCAGAAGAGTGACAATGCACGCCAGCAACTGGAGCGGCAGAACAAAGGAGCT
 GAAGGCCAAGCTGCAGGAAGCTCGAGGTGCTGTCAAGTCTAAGTCAAGGCCACCATCTCAGCCCTGGAG
 GCCAAGATTGGGACGCTGGAGGAGCAGCTTGGAGGAGCAAGGAACGAGCAGCGCCCAACAAATTAG
 TCCGTCGACTGAGAAGAAGCTGAAAGAAATCTTATGCAGGTTGAGGATGAGCGTCGACACGCGGACCA
 GTATAAAGAGCAGATGGAGAAGGCCAACGCTCGGATGAAGCAGCTTAAACGCCAGCTGGAGGAAGCAGAA
 GAAGAAGCGACGCGTGCCAACGCATCTCGGCGTAAACTCCAGCGGAACTGGATGATGCCACCGAGGCCA
 ACGAGGGCCTGAGCCGCGAGGTGACACCCTGAAGAACCAGCTGAGGCGGGGTGGCCCCATCAGCTTCTC
 TTCCAGCCGATCTGGCCGCGCCAGCTGCACCTTGAAGGAGCTTCCCTGGAGCTCTCCGACGATGACACA
 GAAAGTAAGACCAGTGATGTCAACGAGACGACGCCACCCAGTCAGAG

AGCGGACCGACGCGTACGCGGCGCTCGAG – GFP Tag – GTTTAA

Protein Sequence:

>RG218258 representing NM_005964
 Red=Cloning site Green=Tags(s)

MAQRTGLEDPERYLFVDRVIYNPATQADWTAKKLVWIPSERHGFEEASIKEERGDEVMVELAENGGKAM
 VNKDDIQKMNPPKFSKVEDMAELTCLNEASVLHNLKDRYYSGLIYTYSGLFCVVINPYKNLPIYSENIIE
 MYRGKKRHEMPPHIYAISESAYRCMLQDREDQSILCTGESGAGKTENTKKVIQYLAHVASSHKRGRDHNI
 PGELERQLLQANPILESFNAKTVKNDNSRFKGFIRINFDVTGYIVGANIETYLLEKSRVRAQKADERT
 FHIFYQLLSGAGEHLKSDLLLEGFNRYRFLSNGYIPIPGQDQDNFQETMEAMHIMGFSHEEILSMLKV
 SSVLQFGNISFKKERNTDQASMPENTVAQKCHLLGMVMFETRAILTPRIKVGDRDYVQKAQTKEQADFA
 VEALAKATYERLFRWLVHRINKALDRTRKQGFISGILDIAGFEIFELNSFEQLCINYTNEKLQQLFNHT
 MFILEQEEYQREGIEWNFIDFGLDLQPCIDLERPANPPGVLALLDEECWFPKATDKTFVEKLVQEQGSH
 SKFQKPRQLKDKADFCIIHYAGKVYKADDEWLMKNMDPLNDNVATLLHQSSDRFVAVELWKDQVDRIVGLDQ
 VTGMTETAFGSAYKTKKGMFRVTGQLYKESLTKLMATLRNTNPNFVRCIIPNHEKRAGKLDPHLVLDQLR
 CNGVLEGIIRICRQGFNRIYVQEFQRQYELTPNAIPKGFMDGKQACERMIRALELDPNL YRIGQSKIFF
 RAGVLAHLEEEERDLKITDIIIFQAVCRGYLARKAFKKQQLSALKVLQRNCAAYLKLHWHQWVRVFTK
 VKPLLQVTRQEEELQAKDEELLKVKQKQTKVEGELEEMERKHQQLLEEKNILAEQLQAETELFAEAEEMR
 ARLAARKQLEELLDLESRVEEEERQILQNEKKMQAHIQDLEEQLEDEEGARQKLQLEKVTAEAKI
 KKMEEEEILLLEDQNSKFIKEKKLMEDRIAECSSQLAEKEEKAKNLAKIRNKQEVMSDLEERLKKEEKTR
 QELEKAKRKLQDGETTDLQDQIAELQAQIDELKLQLAKKEEELQGALARGDDETLHKNNALKVVRELQAQI
 AELQEDFESEKASRNKAEKQKRDLESELEALKTELEDLDTTAAQQLRTKREQVAVELKKALEEETKNH
 EAQIQDMRQRHATALEELSEQLEQAKRFKANLEKNKQGLETDNKEACEVKVLQVKAESEHKRKKLDAQ
 VQELHAKVSEGDRRLVELAEKASKLQNELDNVSTLLEAEKKGIFAKDAASLESQLEQDTELLQEETRQ
 KLNLSRIRQLQEEKNSLQEQEEEEARKNLEKQVLAALQSQLADTKKVDLDTGIESLEEAKKLLKLD
 AEALSQLREEKALAYDKLEKTKNRLQLEDDLTVDLDHQRQVANSLEKKQKFDQLLAEEKSISARYAEE
 RDRAEAAREKETKALSLARALEALEAKEEFERQNKQLRADMEDLMSSKDDVGVKNVHELEKSKRALEQQ
 VEEMRTQLEEELEDELQATEDAKLRLEVMQAMKAQFERDLQTRDEQNEEKRLLIKQVRELEAELEDERK
 QRALAVASKKMEIDLKLEAQIEAANKARDEVIKQLRKLQAQMKDYQRELEEARASRDEIFAQSKSESEK
 KLKSLAEIILQLEELASSERARRHAEQERDELADEITNSASGSALLDEKRRLEARIAQLEEEEEEQS
 NMELLNDRFRKTTLVQDTLNAELAAERSAAQSDNARQQLERQNKELKAKLQLEGAVKSKFKATISALE
 AKIGQLEEQLEQEAKEAAAANKLVRTEKLLKEIFMQVEDERRHADQYKEQMEKANARMKQLKRQLEAE
 EEATRANASRRKLRQLDDATEANEGLSREVSTLKNRLRRGGPISSSSRSGRRQLHLEGASLELSDDDT
 ESKTSDVNETQPPQSE

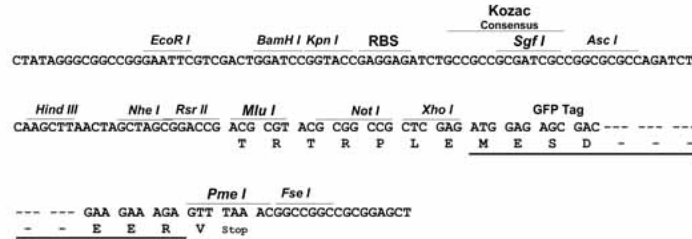
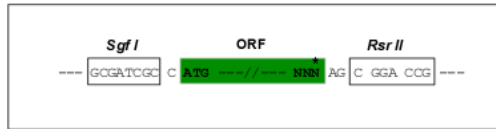
SGPTRRRLE – GFP Tag – V

Restriction Sites:

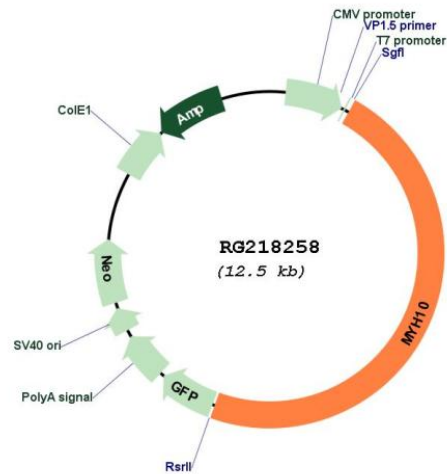
Sgfl-RsrII

Cloning Scheme:

Cloning sites used for ORF Shuttling:



Plasmid Map:



ACCN: NM_005964

ORF Size: 5928 bp

OTI Disclaimer:	<p>Due to the inherent nature of this plasmid, standard methods to replicate additional amounts of DNA in E. coli are highly likely to result in mutations and/or rearrangements. Therefore, OriGene does not guarantee the capability to replicate this plasmid DNA. Additional amounts of DNA can be purchased from OriGene with batch-specific, full-sequence verification at a reduced cost. Please contact our customer care team at custsupport@origene.com or by calling 301.340.3188 option 3 for pricing and delivery.</p> <p>The molecular sequence of this clone aligns with the gene accession number as a point of reference only. However, individual transcript sequences of the same gene can differ through naturally occurring variations (e.g. polymorphisms), each with its own valid existence. This clone is substantially in agreement with the reference, but a complete review of all prevailing variants is recommended prior to use. More info</p>
OTI Annotation:	This clone was engineered to express the complete ORF with an expression tag. Expression varies depending on the nature of the gene.
Components:	The ORF clone is ion-exchange column purified and shipped in a 2D barcoded Matrix tube containing 10ug of transfection-ready, dried plasmid DNA (reconstitute with 100 ul of water).
Reconstitution Method:	<ol style="list-style-type: none"> 1. Centrifuge at 5,000xg for 5min. 2. Carefully open the tube and add 100ul of sterile water to dissolve the DNA. 3. Close the tube and incubate for 10 minutes at room temperature. 4. Briefly vortex the tube and then do a quick spin (less than 5000xg) to concentrate the liquid at the bottom. 5. Store the suspended plasmid at -20°C. The DNA is stable for at least one year from date of shipping when stored at -20°C.
RefSeq:	NM_005964.3 , NP_005955.3
RefSeq Size:	7619 bp
RefSeq ORF:	5931 bp
Locus ID:	4628
UniProt ID:	P35580
Cytogenetics:	17p13.1
Protein Families:	Druggable Genome
Protein Pathways:	Regulation of actin cytoskeleton, Tight junction, Viral myocarditis
Gene Summary:	<p>This gene encodes a member of the myosin superfamily. The protein represents a conventional non-muscle myosin; it should not be confused with the unconventional myosin-10 (MYO10). Myosins are actin-dependent motor proteins with diverse functions including regulation of cytokinesis, cell motility, and cell polarity. Mutations in this gene have been associated with May-Hegglin anomaly and developmental defects in brain and heart. Multiple transcript variants encoding different isoforms have been found for this gene. [provided by RefSeq, Dec 2011]</p>