

Product datasheet for **RG218257**

SFMBT1 (NM_016329) Human Tagged ORF Clone

Product data:

Product Type:	Expression Plasmids
Product Name:	SFMBT1 (NM_016329) Human Tagged ORF Clone
Tag:	TurboGFP
Symbol:	SFMBT1
Synonyms:	hSFMBT; RU1; SFMBT
Mammalian Cell Selection:	Neomycin
Vector:	pCMV6-AC-GFP (PS100010)
E. coli Selection:	Ampicillin (100 ug/mL)



[View online »](#)

ORF Nucleotide Sequence:

>RG218257 representing NM_016329
 Red=Cloning site Blue=ORF Green=Tags(s)

TTTTGTAATACGACTCACTATAGGGCGGCCGGAATTCGTCGACTGGATCCGGTACCGAGGAGATCTGCC
 GCC**CGCATCGCC**

ATGAACGGGGAGCAGCAGCTTGATGCAGATGCCGGCTCTGGTATGGAAGAGGTAGAATTAAGCTGGGAAG
 ATTATCTAGAAGAAACAGGGTCCACAGCAGTTCCTATGGGTCTTTAAACATGTGGACACACGTTTGCA
 AAATGGATTTGCTCCTGGGATGAAGCTGGAGGTGGCTGTGAGAACAGATCCTGAGACCTACTGGGTTGCC
 ACCGTTATCACTACCTGTGAGCAGTTGCTCCTTCTCCGCTATGATGGCTATGGGAGGATCGGAGAGCAG
 ATTTCTGGTGTGACATCAGGAAGGCTGATCTACCCATTGGGTGGTGTGAGCAGAATAAGAAGACCTT
 TGAAGCCCCAGAAGGCATCAGAGATAAAGTATCTGACTGGGATGAGTTTCTGCGGCAGACCTGATAGGA
 GCATGTAGTCTCCTGTTCCGCTGCTAGAGGGCCTCCGTAATGGGAGGAATCCTTTAGATCTCATTGCTC
 CAGGATCCAGACTAGAATGTCAAGCTTCCAGGACTCTTAAAGCACTTGGATTGTTACTGTAGTAGAAAA
 CATTGGAGGAAGGCTGAAGCTACGTTATGAAGGACTTGAAGTTCTGACAATTATGAACATTGGTTGTAT
 TACTTGGATCCATTTCTCATCACGTTGGTTGGGCTGCTCAACAGGGATATGAGCTTCAGCCCCCTTCAG
 CCATTAGACATCTAAAAATGAAGCTGAGTGGCAAGAGATTTTGGCCAAAGTGAAGAGGAAGAGGAAGA
 GCCATTACCATCTTACTTATTTAAGGACAAACAAGTTATTGGCATTACATACATTCTGTAAACATGAAA
 TTGGAAGCTGTAGACCCCTGGTCTCCTTTTGGGATCTCTCCTGCTACAGTTGTTAAGGTTTTTGTGAGA
 AGTACTTTCTGGTGGAAATGGATGACTTGGCTCCTGAGAACACGCACGGCGATCCTTTGTGTGCCACGC
 CGACAGTCTGGCATCTCCCTGTGCAGTGGAGTCTGAAGAATGGCTACACATCAGCCCCCTCCAGGC
 TACCCAGCCAGGACTTGTACTGGGCTGACTACCTCAAACAGTGTGGTGTGAGCTGCTCCCAAGAGGT
 GCTTCCCTCCGTTAATTTCTGAACATGAATTTAAGGAGAACATGAAGCTCGAGGGCGTGAACCCATTCT
 CCTGAAGAAGTGTGTGTTGCTACCATCAGTGCAGTGCAGGCTCCTACCTGTGGCTCCAGCTGGAGGGT
 TCTAAGAAGCCTATACCTGAATGTATTGTGAGTGTGGAATCCATGGATATATTTCTTTGGGCTGGTGTG
 AAACCAACGGCCACCCCTCAGCACTCCTCGCGAGCACGAGTATATAAACAGAGGAAAATTGCAGTGGT
 TCAGCCAGAAAAACAAGTACCATCCTCGAGGACTGTCCACGAGGGCTGAGGAATCAGGAGCTGAACTCC
 ACAGAGTCAGTTATGATTAATGGAAAATATTGCTGTCCAAAGATATACTTCAACCACCGTTGCTTCTCAG
 GGCCATATCTTAACAAAGGAAGAATTGCTGAGCTGCCTCAATGTGTAGGACCTGGAACTGTGTTCTGGT
 CCTTAGAGAGTCTCACTTTACTTATCAATGCAGCCTACAAACCCAGCCGTGTCCTTCGGGAGCTCCAG
 CTGGACAAAGACTCTGTGTGGCACGGATGTGGGAAGTCTAAAAGCCAAATATAAAGGAAAGAGTTATC
 GGGCTACTGTTGAGATAGTGAACACAGCAGATCGGGTACTGAATTCGCGGCAACCTGTATCAAAC
 GGAATGCTGTCCCTAACCTCTCGGTCCACGGATGGTTCTGGATAAGTGTCTGAGAACTGTTCTGTACTT
 ACAAGACCAAATACACACACTATTACGGAAAGAAGAAAATAAAAAGAAATGGGAGGCCACCTGGTGGGC
 ATAGTAACTTAGCTTGTGCCCTGAAAAAGCCAGTAAAGAGGAGAAAGAGGCGGAAAAATGTTTTTGTTC
 TAAGAAGAAACGCTCCTCTGCATCTGTTGATAATACCCAGCGGGCTCTCCCAGGGAAGTGGGGGTGAA
 GATGAGGATGACCCAGATGAAGGGGATGATGATCCCTAAGTGAAGGCAGTACATCCGAGCAGCAGGATG
 AGCTACAGGAAGAATCAGAAATGTCAGAAAAAAGTCAATGCTCCTTCTCCCACCAAAGTGAATATC
 CACATCGCTGCCTCCAGATAGACAAAGGAGAAAAAGGGAGCTTCGCACCTTTTCATTTTCTGACGATGAA
 AATAAACCTCCTTACCAAAGGAAATAAGGATCGAAGTTGCTGAAAGGCTTACCTGGACAGTAACCCCT
 TGAAGTGGAGTGTGGCAGACGTTGTGCGGTTTCATCAGATCCACTGACTGTGCTCCATTAGCAAGAATATT
 CCTAGACCAGGAAATTGATGGGCAGGCCCTGTTGCTCCTTACCCTTCCCCTGTTCAAGAATGCATGGAC
 TAAAAATTGGCCCTGCCATCAAACCTTGGCCATCACATAGAGAGGATCAAGTTTGTCTTTTATGAGCAGT
 TTGCCAAC

ACGCGTACGCGGCCGCTCGAG - GFP Tag - GTTTAA

Protein Sequence: >RG218257 representing NM_016329
 Red=Cloning site Green=Tags(s)

MNGEQQLDADAGSGMEEVELSWEDYLEETGSTAVPYGSKFHKVDTRLQNGFAPGMKLEAVRTDPETYWVA
 TVITTCEQLLLLRDGYGEDRRADFWDIRKADLYPIGWCEQNKKTLEAPEGIRDKVSVDWDFLRQTLIG
 ACSPPVPLLEGLRNGRNPLDLIAPGSRLECAQAFQDSLSTWIVTVVENIGGRLKLRVEGLESSDNYEHWLY
 YLDPFLHHVGVAAQQGYELQPPSAIRHLKNEAEWQEILAKVKEEEEEPLPSYLFKDKQVIGIHTFSVNMK
 LEAVDPWSPFGISPATVVKVFDEKYFLVEMDDLRPENHARRSFVCHADSPGIFPVQWSLKNGLHISPPPG
 YPSQDFDWADYLKQCGAEAAPQRCFPPLISEHEFKENMKLEAVNPILPEEVCVATITAVRGSYLWLQLEG
 SKKPIPECIVSVESMDIFPLGWCETNGHPLSTPRRARVYKQRKIAVVQPEKQVPSRTVHEGLRNQELNS
 TESVMINGKYCCPKIYFNHRCFSGPYLNKGRIAEQPQCVGPGNCVLLVREVLTLINAAYKPSRVLRELQ
 LDKDSVWHGCGEVLKAKYKGSYRATVEIVKTADRVTEFCRQTCIKLECCPNLFGPRMVLDKSENCVSL
 TKTYHYHYGKKKNKRIGRPPGGHNLACALKKASKRRRKRKNVFVHKKRSSASVDNTPAGSPQSGGGE
 DEDDPDEGDDSLSEGSTSEQQDELQEESEMSEKKSCSSSPTQSEISTSLPPDRQRKRELRTFSFSDDE
 NKPPSPKEIRIEVAERLHLDNPLKWSVADVVRFIRSTDCAPLARIFLDQEIDGQALLLTLPTVQECMD
 LKLGPAIKLCHHIERIKFAFYEQFAN

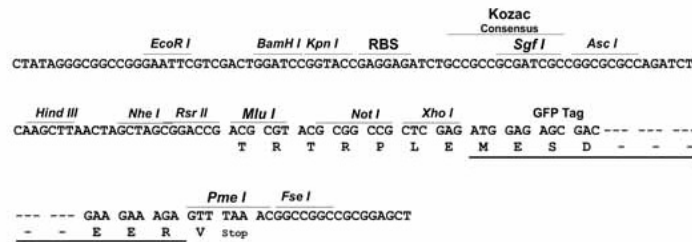
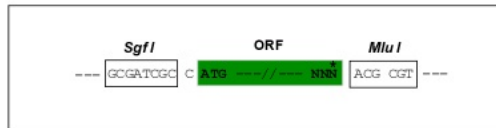
TRTRPLE - GFP Tag - V

Restriction Sites:

SgfI-MluI

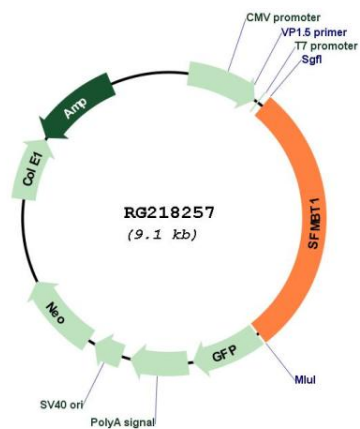
Cloning Scheme:

Cloning sites used for ORF Shuttling:



ACCN:	NM_016329
ORF Size:	2598 bp
OTI Disclaimer:	The molecular sequence of this clone aligns with the gene accession number as a point of reference only. However, individual transcript sequences of the same gene can differ through naturally occurring variations (e.g. polymorphisms), each with its own valid existence. This clone is substantially in agreement with the reference, but a complete review of all prevailing variants is recommended prior to use. More info
OTI Annotation:	This clone was engineered to express the complete ORF with an expression tag. Expression varies depending on the nature of the gene.
Components:	The ORF clone is ion-exchange column purified and shipped in a 2D barcoded Matrix tube containing 10ug of transfection-ready, dried plasmid DNA (reconstitute with 100 ul of water).
Reconstitution Method:	<ol style="list-style-type: none">1. Centrifuge at 5,000xg for 5min.2. Carefully open the tube and add 100ul of sterile water to dissolve the DNA.3. Close the tube and incubate for 10 minutes at room temperature.4. Briefly vortex the tube and then do a quick spin (less than 5000xg) to concentrate the liquid at the bottom.5. Store the suspended plasmid at -20°C. The DNA is stable for at least one year from date of shipping when stored at -20°C.
RefSeq:	NM_016329.4
RefSeq Size:	3512 bp
RefSeq ORF:	2601 bp
Locus ID:	51460
UniProt ID:	Q9UHJ3
Cytogenetics:	3p21.1
Domains:	SAM, MBT
Protein Families:	Transcription Factors
Gene Summary:	This gene shares high similarity with the Drosophila Scm (sex comb on midleg) gene. It encodes a protein which contains four malignant brain tumor repeat (mbt) domains and may be involved in antigen recognition. [provided by RefSeq, Jun 2012]

Product images:



Circular map for RG218257