

Product datasheet for **RG218256**

ACYP1 (NM_203488) Human Tagged ORF Clone

Product data:

Product Type: Expression Plasmids
Product Name: ACYP1 (NM_203488) Human Tagged ORF Clone
Tag: TurboGFP
Symbol: ACYP1
Synonyms: ACYPE
Mammalian Cell Selection: Neomycin
Vector: pCMV6-AC-GFP (PS100010)
E. coli Selection: Ampicillin (100 ug/mL)
ORF Nucleotide Sequence: >RG218256 representing NM_203488
Red=Cloning site **Blue**=ORF **Green**=Tags(s)

TTTTGTAATACGACTCACTATAGGGCGGCCGGAATTCGTCGACTGGATCCGGTACCGAGGAGATCTGCC
GCC**CGATCGCC**

ATGGCAGAAGGAAACACCCTGATATCAGTGGATTATGAAATTTTGGGAAGGTGCAAGGGGTGTTTTTCC
GTAAGCATACTCAGGAAATGACTGTTGAAAACAGAATTGCTGAAACTCACAGCAAGAGCTGTGTTCCAGT
TAGCTTTGCTACCAAGTTATGCAGGC

ACGCGTACGCGGCCGCTCGAG - GFP Tag - GTTTAA

Protein Sequence: >RG218256 representing NM_203488
Red=Cloning site **Green**=Tags(s)

MAEGNTLISVDYEIFGKVGQVFFRKHTQEMTVENRIAETHSKSCVPVSFATSYAG

TRTRPLE - GFP Tag - V

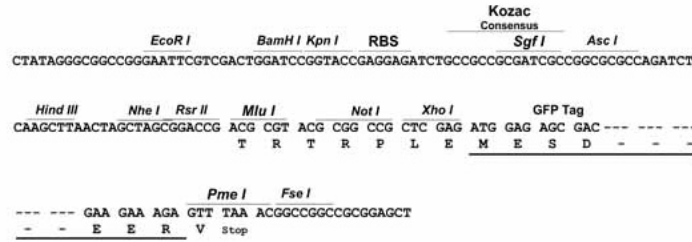
Restriction Sites: Sgfl-Mlul



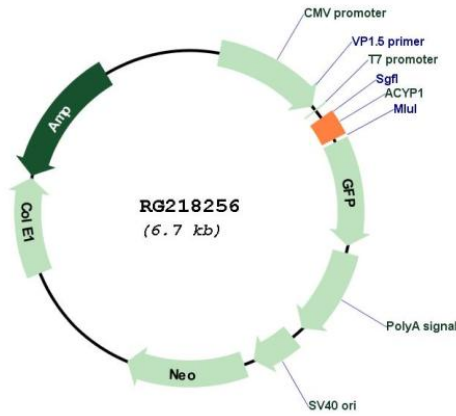
[View online »](#)

Cloning Scheme:

Cloning sites used for ORF Shutting:



Plasmid Map:



ACCN: NM_203488

ORF Size: 165 bp

OTI Disclaimer:	The molecular sequence of this clone aligns with the gene accession number as a point of reference only. However, individual transcript sequences of the same gene can differ through naturally occurring variations (e.g. polymorphisms), each with its own valid existence. This clone is substantially in agreement with the reference, but a complete review of all prevailing variants is recommended prior to use. More info
OTI Annotation:	This clone was engineered to express the complete ORF with an expression tag. Expression varies depending on the nature of the gene.
Components:	The ORF clone is ion-exchange column purified and shipped in a 2D barcoded Matrix tube containing 10ug of transfection-ready, dried plasmid DNA (reconstitute with 100 ul of water).
Reconstitution Method:	<ol style="list-style-type: none">1. Centrifuge at 5,000xg for 5min.2. Carefully open the tube and add 100ul of sterile water to dissolve the DNA.3. Close the tube and incubate for 10 minutes at room temperature.4. Briefly vortex the tube and then do a quick spin (less than 5000xg) to concentrate the liquid at the bottom.5. Store the suspended plasmid at -20°C. The DNA is stable for at least one year from date of shipping when stored at -20°C.
RefSeq:	NM_203488.1 , NP_982355.1
RefSeq Size:	700 bp
RefSeq ORF:	168 bp
Locus ID:	97
Cytogenetics:	14q24.3
Protein Pathways:	Pyruvate metabolism
Gene Summary:	This gene is a member of the acylphosphatase family. The encoded protein is a small cytosolic enzyme that catalyzes the hydrolysis of the carboxyl-phosphate bond of acylphosphates. Two isoenzymes have been isolated and described based on their tissue localization: erythrocyte (common) type acylphosphatase encoded by this gene, and muscle type acylphosphatase. Alternative splicing results in multiple transcript variants. [provided by RefSeq, Oct 2014]