

Product datasheet for **RG218248**

SLIT3 (NM_003062) Human Tagged ORF Clone

Product data:

Product Type:	Expression Plasmids
Product Name:	SLIT3 (NM_003062) Human Tagged ORF Clone
Tag:	TurboGFP
Symbol:	SLIT3
Synonyms:	MEGF5; SLIL2; Slit-3; SLIT1; slit2
Mammalian Cell Selection:	Neomycin
Vector:	pCMV6-AC-GFP (PS100010)
E. coli Selection:	Ampicillin (100 ug/mL)
ORF Nucleotide Sequence:	>RG218248 representing NM_003062 Red=Cloning site Blue=ORF Green=Tags(s)

TTTTGTAATACGACTCACTATAGGGCGGCCGGAATTCGTCGACTGGATCCGGTACCGAGGAGATCTGCC
GCC**CGATCGCC**

ATGGCCCCGGGTGGCAGGGGTCGGCGCCGCGTGGCGCCCGCTGGCGCTGGCCTTGGCGCTGGCGA
GCGTCTGAGTGGGCTCCAGCGTCGCTGCCACCAAGTGTACCTGCTCCGCTGCCAGCGTGGACTG
CCACGGGCTGGGCTCCGCGGTTCTCGGGCATCCCCGCAACGCTGAGCGCCTTGACCTGGACAGA
AATAATATCACCAGGATACCAAGATGGACTTCGCTGGGCTCAAGAACCTCCGAGTCTTGACATCTGGAAG
ACAACCAGGTGAGCGTCATCGAGAGAGGGCGCTCCAGGACCTGAAGCAGCTAGAGCGACTGCGCCTGAA
CAAGAATAAGCTGCAAGTCCCTCCAGAATTGCTTTCCAGAGCACGCCGAAGCTCACAGACTAGATTTG
AGTGAAAACCAGATCCAGGGATCCCGAGGAAGCGTTCGCGGCATCACCGATGTGAAGAACCTGCAAC
TGGACAACAACCACATCAGCTGCATTGAAGATGGAGCCTCCGAGCGCTGCGCGATTTGGAGATCCTTAC
CCTCAACAACAACAACATCAGTCGCATCCTGGTACCAGCTTCAACCACATGCCGAAGATCCGAACCTG
CGCCTCCACTCCAACCACCTGTACTGCGACTGCCACCTGGCTGGCTCTCGGATTGGCTGCGACAGCGAC
GGACAGTTGGCCAGTTCACACTCTGCATGGCTCCTGTGCATTTGAGGGGCTTCAAGTGGCGGATGTGCA
GAAGAAGGAGTACGTGTGCCAGCCCCCACTCGGAGCCCCATCCTGCAATGCCAATCCATCTCCTGC
CCTTCGCCCTGCACGTGCAGCAATAACATCGTGGACTGTGAGGAAAGGGCTTGATGGAGATTCCTGCCA
ACTTGCCGGAGGCATCGTGAATAACGCTAGAACAGAATCCATCAAAGCCATCCCTGCAGGAGCCTT
CACCCAGTACAAGAACTGAAGCGAATAGACATCAGCAAGAATCAGATATCGGATATTGCTCCAGATGCC
TTCCAGGGCTGAAATCACTCACATCGCTGGTCTGTATGGGAACAAGATCACCGAGATTGCCAAGGGAC
TGTTTGTGGGCTGGTGTCCCTACAGCTGCTCCTCAATGCCAACAAGATCAACTGCCTGCGGGTGAA
CACGTTTCAGGACCTGCAGAACCTCAACTTGTCTCCTGTATGACAACAAGCTGCAGACCATCAGCAAG
GGGCTCTCGCCCTCTGCAGTCCATCCAGACTCCACTTAGCCAAAACCCATTTGTGTGCGACTGCC
ACTTGAAGTGGCTGGCCGACTACCTCCAGGACAACCCATCGAGACAAGCGGGGCCGCTGCAGCAGCCC
GCGCCGACTCGCAACAAGCGCATCAGCCAGATCAAGAGCAAGAAGTCCGCTGCTCAGGCTCCGAGGAT



[View online >](#)

TACCGCAGCAGGTT CAGCAGCGAGTGCTTCATGGACCTCGTGTGCCCCGAGAAGTGTGCTGTGAGGGCA
CGATTGTGGACTGCTCCAACCAGAAGCTGGTCCGCATCCCAAGCCACCTCCCTGAATATGTACCAGCCT
GCGACTGAATGACAATGAGGTATCTGTTCTGGAGGCCACTGGCATCTTCAAGAAGTTGCCAACCTGCGG
AAAATAAATCTGAGTAAACAATAAGATCAAGGAGGTGCGAGAGGGAGCTTTCGATGGAGCAGCCAGCGTGC
AGGAGCTGATGCTGACAGGGAACCAGCTGGAGACCGTGACCGGGCGCGTGTCCGTGGCCTCAGTGGCCT
CAAAACCTTGATGCTGAGGAGTAACTTGATCGGCTGTGTGAGTAATGACACCTTTGCCGGCCTGAGTTCCG
GTGAGACTGCTGCCCTCTATGACAATCGGATCACCACCATCACCCTGGGGCCTCACCACGCTGTGTCT
CCCTGTCCACCATAAACCTCCTGTCCAACCCCTTCAACTGCAACTGCCACCTGGCCTGGCTCGGCAAGTG
GTTGAGGAAGAGGCGGATCGTCACTGAGTGGGAACCCTAGGTGCCAGAAGCCATTTTTCTCAAGGAGATTCCC
ATCCAGGATGTGGCCATCCAGGACTTCACTGTGATGGCAACGAGGAGAGTAGTCCAGCTGAGCCCGC
GCTGCCCGGAGCAGTGCACCTGTATGGAGACAGTGGTGCATGCAGCAACAAGGGGCTCCGCGCCCTCCC
CAGAGGCATGCCAAGGATGTGACCGAGCTGTACCTGGAAGGAAACCACCTAACAGCCGTGCCAGAGAG
CTGTCCGCCCTCCGACACCTGACGCTTATTGACCTGAGCAACAACAGCATCAGCATGCTGACCAATTACA
CCTTCAGTAACATGTCTACCTTCCACTCTGATCCTGAGCTACAACCGGCTGAGGTGCATCCCCGTCCA
CGCCTTCAACGGGCTGCGGTCCCTGCGAGTGCTAACCTCCATGGCAATGACATTTCCAGCGTTCTGTAA
GGCTCCTTCAACGACCTCACATCTTTCCCATCTGGCGCTGGGAACCAACCCACTCCACTGTGACTGCA
GTCTTCGGTGGCTGTGCGAGTGGGTGAAGGCGGGTACAAGGAGCCTGGCATCGCCCGCTGCAGTAGCCC
TGAGCCCATGGCTGACAGGCTCCTGCTCACCACCCCAACCCACCGCTTCCAGTGCAAAGGGCCAGTGGAC
ATCAACATTGTGGCCAAATGCAATGCCTGCCTTCCAGCCCGTCAAGAATAACGGGACATGCACCCAGG
ACCCTGTGGAGCTGTACCGCTGTGCCTGCCCTACAGTACAAGGGCAAGGACTGCACTGTGCCATCAA
CACCTGCATCCAGAACCCTGTGAGCATGGAGGCCCTGCCACCTGAGTGACAGCCACAAGGATGGGTTC
AGCTGCTCCTGCCCTCTGGGCTTTGAGGGGCAGCGGTGTGAGATCAACCCAGATGACTGTGAGGACAACG
ACTGCGAAAACAATGCCACCTGCGTGGACGGGATCAACAACACTAGTGTGTATCTGCCCCCTAACTACAC
AGGTGAGCTATGCGACGAGGTGATTGACCACTGTGTGCCTGAGCTGAACCTCTGTGAGCATGAGGCCAAG
TGCATCCCCCTGGACAAAGGATTGAGTGCAGTGTGTCCCTGGCTACAGCGGGAAGCTCTGTGAGACAG
ACAATGATGACTGTGTGGCCACAAGTGGCCACGCGGGCCAGTGCCTGGACACAATCAATGGCTACAC
ATGCACCTGCCCCAGGGCTTCACTGGACCTTCTGTGAACACCCCCACCCATGGTCTACTGCAGACC
AGCCCCATGCGACAGTACGAGTGCAGAACGCGGGCCAGTGCATCGTGGTGCAGCAGGAGCCACCTGCC
GCTGCCACCAGGCTTCGCGGGCCAGATGCGAGAAGCTCATCACTGTCAACTCGTGGGCAAAGACTC
CTACGTGGAAGTGGCCTCCGCAAGGTCCGACCCAGGCCAACATCTCCCTGCAGGTGGCCACTGACAAG
GACAACGGCATCCTTCTCTACAAAGGAGACAATGACCCCTGGCACTGGAGCTGTACCAGGGCCACGTGC
GGCTGGTCTATGACAGCCTGAGTTCCTCCCAACCCACAGTGTACAGTGTGGAGACAGTGAATGATGGGCA
GTTTCACAGTGTGGAGCTGGTGCAGCTAAACCAGACCCTGAACCTAGTAGTGGACAAAGGAACTCCAAG
AGCCTGGGGAAGCTCCAGAAGCAGCCAGCAGTGGGCATCAACAGCCCCCTTACCTTGGAGGCATCCCCA
CCTCCACCGGCCTCTCCGCTTGCGCCAGGGCAGGACCGGCCTTAGGGCGCTTCCACGGATGCATCCA
TGAGGTGCGCATCAACAACGAGCTGCAGGACTTCAAGGCCTCCACCACAGTCCCTGGGGGTGTACCA
GGCTGCAAGTCTGCACCGTGTGCAAGCACGGCCTGTGCCCTCCGTGGAGAAGGACAGCGTGGTGTGCG
AGTGCCCGCCAGGCTGGACCGGCCACTCTGCGACCAGGAGGCCCGGGACCCCTGCCTCGGCCACAGATG
CCACCATGGAAAATGTGTGGCAACTGGGACCTATACATGTGCAAGTGTGCCGAGGGCTATGGAGGGGAC
TTGTGTGACAACAAGAATGACTCTGCAATGCCTGCTCAGCCTTCAAGTGTACCATGGGACAGTGGCACA
TCTCAGACCAAGGGGAGCCCTACTGCCTGTGCCAGCCCGCTTTAGCGGCGAGCACTGCCAACAAGAGAA
TCCGTGCCTGGGACAAGTAGTCCGAGAGGTGATCCGCGCCAGAAAGGTTATGCATCATGTGCCACAGCC
TCCAAGGTGCCATCATGGAATGTGCGGGGGCTGTGGGCCCCAGTGTGCCAGCCACCCGAGCAAGC
GGCGGAAATACGTCTTCCAGTGCACGGACGGCTCCTCGTTTGTAGAAGAGGTGGAGAGACTTAGAGTG
CGGCTGCCTCGCGTGTCC

ACGGGCCGCTCGAG - GFP Tag - GTTTAA

Protein Sequence: >RG218248 representing NM_003062
 Red=Cloning site Green=Tags(s)

```

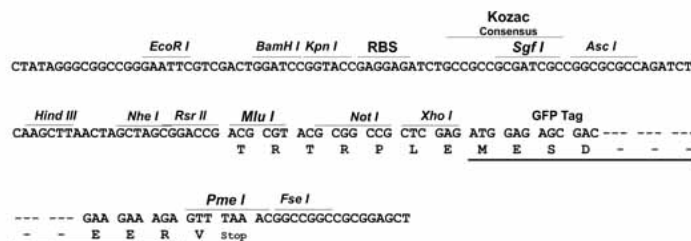
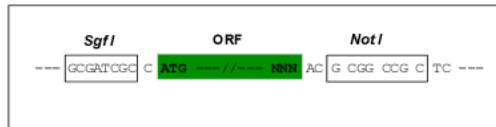
MAPGWAGVGA AVRARLALALASVLSGPPAVACPTKCTCSAASVDCHLGLRAVPRGIPRNERLDLDR
NNITRITKMDFAGLKNLRVHLLEDNQVSVIERGAFQDLKQLERLRNKNKLOVPELLFQSTPKLTRLDL
SENQIQGIPRKA FRGITDVKNLQLDNNHISCI EDGAFRALRDLEILTLN NNNISRLVTSFNHMPKIRTL
RLHSNHL YCDCHLAWLSDWLRQRRTVGQFTLCMA PVHLRGFNADVQKKEYVCPAPHSEPPSCNANSISC
PSPCTCSNNI VDCRGKGLMEIPANLPEGIVEIRLEQNSIKAIPAGAF TQYKCLKRIDISKNQISDIAPDA
FQGLKSLTSLVLYGNKITEIAKGLFDGLVSLQLLLL NANKINCLRVNTFQDLQNLNLLSLYDNKLTISK
GLFAPLQSIQTLHLAQNPFCVCDCHLKWLADYLQDNPIETSGARCSSPRRLANKRISQIKSKKFRCSGSED
YRSRFSSECFMDLVCPEKCRCEGTIVDCSNQKLVRI PSHLPEYVTDLRLNDNEVSVLEATGIFKKLPNLR
KINLSNNKI KEVREGAFDGAASVQELMLTGNQLET VHGRVFRGLSGLKTLMLRSNLIGCVSNDTFAGLSS
VRLLSLYDNRITITIPGAF TTVLSLSTINLLSNPFNCNCHLAWL GKWLKRRIVSGNPRCQKPFFLKEIP
IQDVAIQDFTCDGNEESSQLSPRCPEQCTCMETV VRCNSKGLRALPRGMPKDVTELYLEG NHLTAVPRE
LSALRHLTLIDL SNNSISMLTNYTF SNMSHLSTLILSYNRLRCIPVHAFNGLRSLRVLTLHGNDISSVPE
GSFNDL TSLSHLALGTNPLHCDCLRWLSEWVKAGYKEPGIARCSSPEPMADRLLLTTPTHR FQCKGPVD
INIVAKNACLSSPKNNGTCTQDPVELYRCACPY SYKGDCTVPINTCIQNPCQHGGTCHLSDSHK DGF
SCSCPLGFEGQRCEINPDDCEDNDCENNATCVDGINNYVICPPNYTGELCDEVIDHCVP ELNLCQHEAK
CIPLDKGFSCECPVGYSGKLCETDNDDCVAHKCRHGAQCVD TINGYTCTCPQGFSGPFCEHPPMVLLQT
SPCDQYECQNGAQCIVVQQEPTCRCPGFAGPRCEK LITVNFVGKDSYVELASAKVRPQANISLQVATDK
DNGILLYKGDNDPLALELYQGHVRLVYDSLSSPPTTVYSVETVNDGQFHSVELVTLNQT LNLVVDKGTKP
SLGK LQKQPAVGINSPLYLGGIPTSTGLSALRQGTDRPLGGFHGCIHEVRINNELQDFKALPPQSLGVSP
GCKSCTVCKHGLCRSVEKDSVVECECRPGWTGPLCDQEARDPCLGHRCHHGKCVATGTSYMCKCAEGYGGD
LCDNKNSANACSAFKCHHGQCHI SDQGEPYCLCQPGFSGEHCQQENPCLGQVVREVI RRQKGYASCATA
SKVPIMECRGGCGPQCCQPTRSKRRKYVFQCTD GSSSFVEEVERHLECGCLACS
  
```

TRPLE - GFP Tag - V

Restriction Sites: SgfI-NotI

Cloning Scheme:

Cloning sites used for ORF Shuttling:

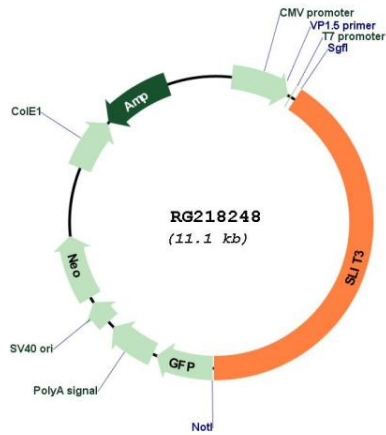


ACCN: NM_003062

ORF Size: 4569 bp

OTI Disclaimer:	The molecular sequence of this clone aligns with the gene accession number as a point of reference only. However, individual transcript sequences of the same gene can differ through naturally occurring variations (e.g. polymorphisms), each with its own valid existence. This clone is substantially in agreement with the reference, but a complete review of all prevailing variants is recommended prior to use. More info
OTI Annotation:	This clone was engineered to express the complete ORF with an expression tag. Expression varies depending on the nature of the gene.
Components:	The ORF clone is ion-exchange column purified and shipped in a 2D barcoded Matrix tube containing 10ug of transfection-ready, dried plasmid DNA (reconstitute with 100 ul of water).
Reconstitution Method:	<ol style="list-style-type: none">1. Centrifuge at 5,000xg for 5min.2. Carefully open the tube and add 100ul of sterile water to dissolve the DNA.3. Close the tube and incubate for 10 minutes at room temperature.4. Briefly vortex the tube and then do a quick spin (less than 5000xg) to concentrate the liquid at the bottom.5. Store the suspended plasmid at -20°C. The DNA is stable for at least one year from date of shipping when stored at -20°C.
RefSeq:	NM_003062.1 , NP_003053.1
RefSeq Size:	5015 bp
RefSeq ORF:	4572 bp
Locus ID:	6586
UniProt ID:	O75094
Cytogenetics:	5q34-q35.1
Domains:	LRRNT, LRRCT, LRR, LamG, EGF_CA, LRR_RI, LRR_TYP, CT, EGF, EGF, LRR_BAC, LRR_PS
Protein Families:	Druggable Genome, Secreted Protein
Protein Pathways:	Axon guidance
Gene Summary:	The protein encoded by this gene is secreted, likely interacting with roundabout homolog receptors to effect cell migration. Two transcript variants encoding different isoforms have been found for this gene. [provided by RefSeq, Dec 2012]

Product images:



Circular map for RG218248