

Product datasheet for **RG218242**

GABRE (NM_021984) Human Tagged ORF Clone

Product data:

Product Type:	Expression Plasmids
Product Name:	GABRE (NM_021984) Human Tagged ORF Clone
Tag:	TurboGFP
Symbol:	GABRE
Synonyms:	GABA(A) receptor; gamma-aminobutyric acid (GABA) A receptor, epsilon; OTTHUMP00000025892
Mammalian Cell Selection:	Neomycin
Vector:	pCMV6-AC-GFP (PS100010)
E. coli Selection:	Ampicillin (100 ug/mL)
ORF Nucleotide Sequence:	>RG218242 representing NM_021984 Red=Cloning site Blue=ORF Green=Tags(s)

TTTTGTAATACGACTCACTATAGGGCGGCCGGAATTCGTCGACTGGATCCGGTACCGAGGAGATCTGCC
GCC**GCGATCGCC**

ATGGAATACACCATTTGACATCATCTTCTCCAGACCTGGTACGACGAACGCCTCTGTTACAACGACACCT
TTGAGTCTCTTGTCTGAATGGCAATGTGGTGAGCCAGCTATGGATCCCGGACACCTTTTTAGGAATTC
TAAGAGGACCCACGAGCATGAGATCACCATGCCCAACCAGATGGTCCGCATCTACAAGGATGGCAAGGTG
TTGTACACAATTAGGATGACCATTGATGCCGGATGCTCACTCCACATGCTCAGATTTCCAATGGATTCTC
ACTCTTGCCCTCTATCTTCTCTAGCTTTTCTATCCTGAGAATGAGATGATCTACAAGTGGGAAAATTT
CAAGCTTGAAATCAATGAGAAGAACTCCTGGAAGCTTCCAGTTTGATTTTACAGGAGTGAGCAACAAA
ACTGAAATAATCACAAACCCAGTTGGTGACTTCATGGTCATGACGATTTTCTCAATGTGAGCAGGCGGT
TTGGCTATGTTGCCTTTCAAACATATGTCCTTCTCCGTGACCAGATGCTCTCCTGGGTTTCTTTTG
GATCAAGACAGAGTCTGCTCCAGCCCGGACCTCTAGGGATCACCTCTGTTCTGACCATGACCAGTTG
GGCACCTTTTCTCGTAAGAATTTCCCGCGTGTCTCCTATATCACAGCCTTGGATTTCTATATCGCCATCT
GCTTCGCTTCTGCTTCTGCGCTCTGTTGGAGTTTGTGTGCTCAACTTCTGATCTACAACCAGACAAA
AGCCCATGCTTCTCCTAAACTCCGCCATCTCGTATCAATAGCCGTGCCATGCCGTACCCGTGCACGT
TCCCGAGCCTGTGCCCGCAACATCAGGAAGCTTTTGTGTGCCAGATTGTCAACTGAGGGAAGTGATG
GAGAGGAGCGCCCGTCTTGCTCAGCCCAGCAGCCCTAGCCCAGGTAGCCCTGAGGGTCCCCGACGCT
CTGCTCCAAGCTGGCCTGCTGTGAGTGGTGAAGCGTTTAAAGAAGTACTTCTGCATGGTCCCGATTGT
GAGGGCAGTACCTGGCAGCAGGGCCGCTCTGCATCCATGTCTACCGCCTGGATAACTACTCGAGAGTTG
TTTTCCAGTGACTTTCTTCTTCAATGTGCTCTACTGGCTTGTTCCTTAAGTTG

ACGCGTACGCGGCCGCTCGAG - GFP Tag - GTTTAA



[View online »](#)

Protein Sequence: >RG218242 representing NM_021984
 Red=Cloning site Green=Tags(s)

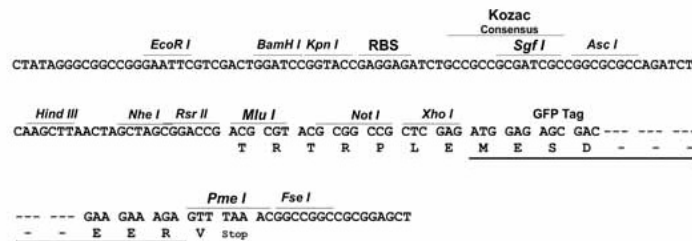
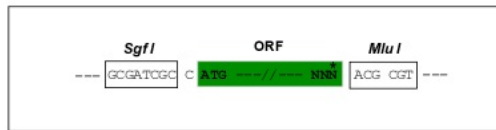
MEYTIIDIIIFSQTWYDERLCYNDTFESLVLNGNVVSQLWIPDTFFRNSKRTHEHEITMPNQMVRIYKDGKV
 LYTIRMTIDAGCSLHMLRFPMDSHSCPLSFSSFSYPENEMIYKWFNKLEINEKNSWKLQFDFTGVSNK
 TEIITTPVGDVMVTIFFNVSRRFGYVAFQNYVPSSVTTMLSWVSFWIKTESAPARTSLGITSVL TMTTL
 GTF SRKNFPRVSYITALDFYIAICFVFCALLEFAVLNFLIYNQTKAHASPKLRHPRINSRAHARTRAR
 SRACARQHQEAFCQIVTTEGSDGEERPSCSAQQPPSPGSPGPRSLCSKLACCEWCKRFKKYFCMVPDC
 EGSTWQQGRLCIHVYRLDNYSRVVFPVPTFFFFNVLYWL VCLNL

TRTRPLE - GFP Tag - V

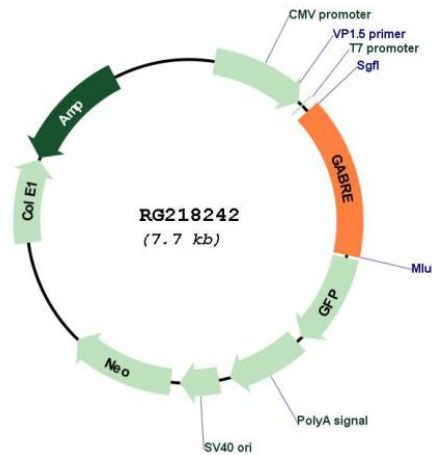
Restriction Sites: SgfI-MluI

Cloning Scheme:

Cloning sites used for ORF Shutting:



Plasmid Map:



ACCN: NM_021984

ORF Size:	1179 bp
OTI Disclaimer:	The molecular sequence of this clone aligns with the gene accession number as a point of reference only. However, individual transcript sequences of the same gene can differ through naturally occurring variations (e.g. polymorphisms), each with its own valid existence. This clone is substantially in agreement with the reference, but a complete review of all prevailing variants is recommended prior to use. More info
OTI Annotation:	This clone was engineered to express the complete ORF with an expression tag. Expression varies depending on the nature of the gene.
Components:	The ORF clone is ion-exchange column purified and shipped in a 2D barcoded Matrix tube containing 10ug of transfection-ready, dried plasmid DNA (reconstitute with 100 ul of water).
Reconstitution Method:	<ol style="list-style-type: none">1. Centrifuge at 5,000xg for 5min.2. Carefully open the tube and add 100ul of sterile water to dissolve the DNA.3. Close the tube and incubate for 10 minutes at room temperature.4. Briefly vortex the tube and then do a quick spin (less than 5000xg) to concentrate the liquid at the bottom.5. Store the suspended plasmid at -20°C. The DNA is stable for at least one year from date of shipping when stored at -20°C.
RefSeq:	NM_021984.2 , NP_068819.2
RefSeq Size:	3345 bp
RefSeq ORF:	1181 bp
Locus ID:	2564
Cytogenetics:	Xq28
Protein Families:	Druggable Genome, Ion Channels: Cys-loop Receptors, Transmembrane
Protein Pathways:	Neuroactive ligand-receptor interaction
Gene Summary:	The product of this gene belongs to the ligand-gated ionic channel (TC 1.A.9) family. It encodes the gamma-aminobutyric acid (GABA) A receptor which is a multisubunit chloride channel that mediates the fastest inhibitory synaptic transmission in the central nervous system. This gene encodes an epsilon subunit. It is mapped to chromosome Xq28 in a cluster comprised of genes encoding alpha 3, beta 4 and theta subunits of the same receptor. Alternatively spliced transcript variants have been identified, but only one is thought to encode a protein. [provided by RefSeq, Oct 2008]