

Product datasheet for **RG218236**

SOX1 (NM_005986) Human Tagged ORF Clone

Product data:

Product Type:	Expression Plasmids
Product Name:	SOX1 (NM_005986) Human Tagged ORF Clone
Tag:	TurboGFP
Symbol:	SOX1
Mammalian Cell Selection:	Neomycin
Vector:	pCMV6-AC-GFP (PS100010)
E. coli Selection:	Ampicillin (100 ug/mL)
ORF Nucleotide Sequence:	>RG218236 representing NM_005986 Red=Cloning site Blue=ORF Green=Tags(s)

TTTTGTAATACGACTCACTATAGGGCGGCCGGGAATTCGTCGACTGGATCCGGTACCGAGGAGATCTGCC
GCC**CGATCGCC**

ATGTACAGCATGATGATGGAGACCGACCTGCACTCGCCCGGGCGGCCAGGCCCCACGAACCTCTCGG
GCCCGCCGGGGCGGGCGGGCGGGGGCGGAGGCGGGGGCGGCGGGCGGGGGCGGCAAGGCCAA
CCAGGACCGGGTCAAACGGCCATGAACGCCTTCATGGTGTGGTCCCAGGGCAGCGGCGAAGATGGCC
CAGGAGAACCCCAAGATGCACAACCTCGAGATCAGCAAGCGCTGGGGCCGAGTGAAGGTCATGTCCG
AGGCCGAGAAGCGCGTTCATCGACGAGGCCAAGCGGCTGCGCGCTGCACATGAAGGAGCACCCGGA
TTACAAGTACCGCCGCGCCGAAGACCAAGACGCTGCTCAAGAAGGACAAGTACTCGCTGGCCGGCGGG
CTCCTGGCGGCCGGCGGGTGGCGGCGCGGCTGTGGCCATGGGCGTGGGCGTGGGCGTGGGCGCGG
CGGCCGTGGGCCAGCGCCTGGAGAGCCAGGCGGCGGCGGGCGGCTACGCGCACGTCAACGGCTG
GGCCAACGGCGCCTACCCGGCTCGGTGGCGGCGGCGGCGGCGGCGGCCATGATGCAGGAGGCGCAG
CTGGCCTACGGGACGACCCGGGCGGGCGGCGCACCCGCACGCGCACCCGCGCACCCGCGCACCCG
ACCACCCGACGCGCACCCGCACAACCCGAGCCATGCACCGCTACGACATGGGCGCGTGCAGTACAG
CCCCATCTCCAACCTCGAGGGCTACATGAGCGCTCGCCCTCGGGCTACGGCGGCTCCCCTACGGCGCC
GCGGCCGCGCCCGCGCTGCGGGCGGCGCGCACCAAGAACTCGGCCGTGGCGGCGGCGGCGGCGGCGG
CGGCCGCGTCTCGGGCGCCCTGGGCGGCTGGGCTCTCTGGTGAAGTCGGAGCCAGCGGAGCCCGCC
CGCCCCAGCGCACTCGCGGGCGCGTGGCCCGGGACCTGCGCGAGATGATCAGCATGTACTTGGCCGCG
GGCGAGGGGGGCGACCCGGCGGCGGCGAGCGGCCGCGGCGCAGAGCCGGTGCCTCGCTGCCGAGC
ACTACCAGGGCGGGCGGCGGGCGTGAACGGCACGGTGCCCTGACGCACATC

AGCGGACCGACGCGTACGCGGCCGCTCGAG - GFP Tag - GTTTAA



[View online »](#)

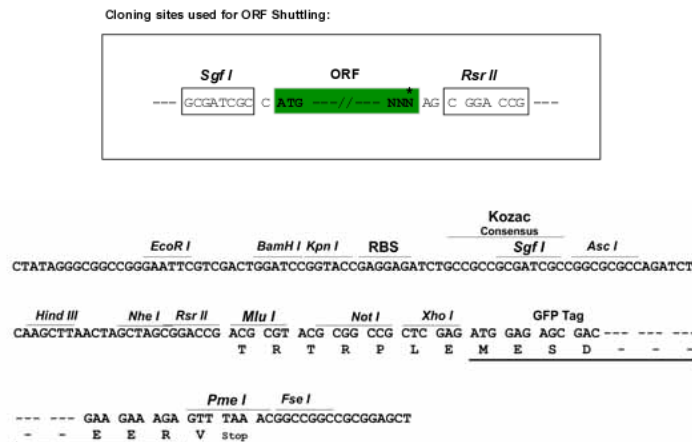
Protein Sequence: >RG218236 representing NM_005986
 Red=Cloning site Green=Tags(s)

MYSMMMETDLHSPGGAQAPTNLSPGAGGGGGGGGGGGGGGAKANQDRVKRPMNAFMVWSRGQRKMA
 QENPKMHNSEISKRLGAEWKVMSEAEKRPFIDEAKRLRALHMKEHPDYKYRPRRKTKTLLKDKYSLAGG
 LLAAGAGGGGAAVAMGVGVGVGAAAVGQRLESPGGAAGGGYAHVNGWANGAYPGSVAAAAAAMMQEAQ
 LAYGQHPGAGGAHPHAHPAHPHPHPHAHPHPNPQPMHRYDMGALQYSPISNSQGYMSASPSGYGGLPYGA
 AAAAAAAGGAHQNSAVAAAAAASSGALGALGSLVKSEPSGSPAPAHSRAPCPGDREMI MYLPA
 GEGGDPAAAAAQAQSRHLHSLPQHYQGAGAVNGTVPLTHI

SGPTRRRLE - GFP Tag - V

Restriction Sites: SgfI-RsrII

Cloning Scheme:



ACCN: NM_005986

ORF Size: 1173 bp

OTI Disclaimer: The molecular sequence of this clone aligns with the gene accession number as a point of reference only. However, individual transcript sequences of the same gene can differ through naturally occurring variations (e.g. polymorphisms), each with its own valid existence. This clone is substantially in agreement with the reference, but a complete review of all prevailing variants is recommended prior to use. [More info](#)

OTI Annotation: This clone was engineered to express the complete ORF with an expression tag. Expression varies depending on the nature of the gene.

Components: The ORF clone is ion-exchange column purified and shipped in a 2D barcoded Matrix tube containing 10ug of transfection-ready, dried plasmid DNA (reconstitute with 100 ul of water).

Reconstitution Method:

1. Centrifuge at 5,000xg for 5min.
2. Carefully open the tube and add 100ul of sterile water to dissolve the DNA.
3. Close the tube and incubate for 10 minutes at room temperature.
4. Briefly vortex the tube and then do a quick spin (less than 5000xg) to concentrate the liquid at the bottom.
5. Store the suspended plasmid at -20°C. The DNA is stable for at least one year from date of shipping when stored at -20°C.

RefSeq: [NM_005986.3](#)

RefSeq Size: 4108 bp

RefSeq ORF: 1176 bp

Locus ID: 6656

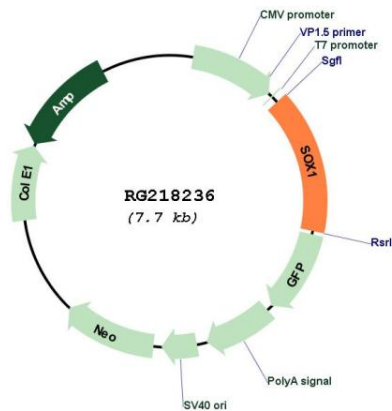
UniProt ID: [O00570](#)

Cytogenetics: 13q34

Protein Families: Adult stem cells, ES Cell Differentiation/IPS, Induced pluripotent stem cells, Transmembrane

Gene Summary: This intronless gene encodes a member of the SOX (SRY-related HMG-box) family of transcription factors involved in the regulation of embryonic development and in the determination of the cell fate. The encoded protein may act as a transcriptional activator after forming a protein complex with other proteins. In mice, a similar protein regulates the gamma-crystallin genes and is essential for lens development. [provided by RefSeq, Jul 2008]

Product images:



Circular map for RG218236