

Product datasheet for **RG218161**

AP2M1 (NM_004068) Human Tagged ORF Clone

Product data:

Product Type:	Expression Plasmids
Product Name:	AP2M1 (NM_004068) Human Tagged ORF Clone
Tag:	TurboGFP
Symbol:	AP2M1
Synonyms:	AP50; CLAPM1; MRD60; mu2
Mammalian Cell Selection:	Neomycin
Vector:	pCMV6-AC-GFP (PS100010)
E. coli Selection:	Ampicillin (100 ug/mL)
ORF Nucleotide Sequence:	>RG218161 representing NM_004068 Red=Cloning site Blue=ORF Green=Tags(s)

TTTTGTAATACGACTCACTATAGGGCGGCCGGAATTCGTCGACTGGATCCGGTACCGAGGAGATCTGCC
GCC**CGATCGCC**

ATGATTGGAGGCTTATTCATCTATAATCACAAAGGGGAGGTGCTCATCTCCCGAGTCTACCGAGATGACA
TCGGGAGGAACGCAGTGGATGCCTTCGGGTCAATGTTATCCATGCCCGGCAGCAGGTGCGCAGCCCGT
CACCAACATTGCTCGCACCAGCTTCTCCACGTTAAGCGGTCCAACATTTGGCTGGCAGCAGTACCAAG
CAGAATGTCAACGCTGCCATGGTCTTCAATTCTCTATAAGATGTGTGACGTGATGGCTGCCTACTTTG
GCAAGATCAGCGAGGAAAACATCAAGAACAATTTGTGCTCATATAGAGCTGCTGGATGAGATTCTAGA
CTTTGGCTACCCACAGAATTCGAGACAGCGCGCTGAAAACCTTCATCACGCAGCAGGGCATCAAGAGT
CAGCATCAGACAAAAGAAGAGCAGTCACAGATCACAGCCAGGTAACGGGCAGATTGGCTGGCGCGGAG
AGGGTATCAAGTATCGTCGGAATGAGCTCTTCTGGATGTGCTGGAGAGTGTGAACCTGCTCATGTCCCC
ACAAGGGCAGGTGCTGAGTGCCCATGTGTGGGCGGGTGGTGTGAAGAGCTACCTGAGTGGCATGCC
GAATGCAAGTTTGGGATGAATGACAAGATTGTTATTGAAAAGCAGGGCAAAGGCACAGCTGATGAAACAA
GCAAGAGCGGGAAGCAATCAATTGCCATTGATGACTGCACCTCCACCAGTGTGTGCGACTCAGCAAGTT
TGACTCTGAACGCAGCATCAGCTTATCCCGCCAGATGGAGAGTTGAGCTTATGAGGTATCGCACAAAC
AAGGACATCATCTTCCCTTCCGGTGATCCCGCTAGTGGCAGAAAGTGGGACGCACCAAACTGGAGGTCA
AGGTGGTCAATCAAGTCCAATTTAAACCTCACTGCTGGCTCAGAAGATCGAGGTGAGGATCCCAACCCC
ACTGAACACAAGCGGGTGCAGGTGATCTGCATGAAGGGGAAGGCAAGTACAAGGCCAGCGAGAATGCC
ATCGTGTGGAAGATCAAGCGCATGGCAGGCATGAAGGAATCGCAGATCAGCGCAGAGATTGAGCTTCTGC
CTACCAACGACAAGAAGAAATGGGCTCGACCCCCATTTCATGAACTTTGAGGTGCCATTGCGGCCCTC
TGGCTCAAGGTGCGCTACTTGAAGGTGTTTGAACCGAAGCTGAACTACAGCGACCATGATGTCATCAA
TGGGTGCGCTACATTGGCCGAGTGGCATTATGAAACTCGCTGC

ACGCGTACGCGGCCGCTCGAG - GFP Tag - GTTTAA



[View online >](#)

Protein Sequence: >RG218161 representing NM_004068
Red=Cloning site Green=Tags(s)

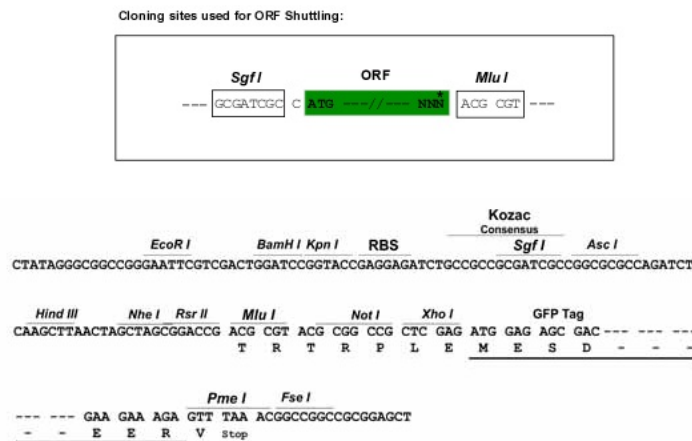
MIGGLFIYNHKGEVLISRYYRDDIGRNAVD AFRVNVIHARQQVRSPTNIARTSFFHVKRSNIWLA AVTK
 QNVNAAMVFEFLYKMC DVMAAYFGKISEENIKNNFVLIYELLDEILDFGYPQNS ETGALKTFITQQGIKS
 QHQTKEEQS QITSQVTGQIGWRREGIKYRRNELFLDVLESVNL LMSPPQQVLSAHVSGRVVMKSYLSGMP
 ECKFGMNDKIVIEKQGGTADETSKSGKQSI AIDDDCTFHQCVRLSKFDSERSISFIPPDGEFELMRVRTT
 KDIIILPFRVIPLVREVGRTKLEVKVVIKSNFKPSLLAQAQIEVRIP TPLNTSGVQVICMKGKAKYKASENA
 IYWKIKRMAGMKESQISAEI ELLPTNDKKKWARPPISMNFVVPFAPSGLKVRYLKVFE PKNLYSDHVDVIK
 WVRYIGRSGIYETRC

TRTRPLE - GFP Tag - V

Chromatograms: https://cdn.origene.com/chromatograms/ja3190_f06.zip

Restriction Sites: SgfI-MluI

Cloning Scheme:



ACCN: NM_004068

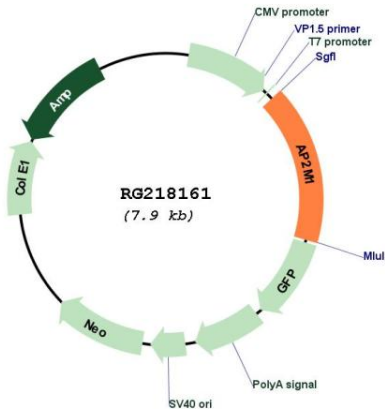
ORF Size: 1305 bp

OTI Disclaimer: Due to the inherent nature of this plasmid, standard methods to replicate additional amounts of DNA in E. coli are highly likely to result in mutations and/or rearrangements. Therefore, OriGene does not guarantee the capability to replicate this plasmid DNA. Additional amounts of DNA can be purchased from OriGene with batch-specific, full-sequence verification at a reduced cost. Please contact our customer care team at custsupport@origene.com or by calling 301.340.3188 option 3 for pricing and delivery.

The molecular sequence of this clone aligns with the gene accession number as a point of reference only. However, individual transcript sequences of the same gene can differ through naturally occurring variations (e.g. polymorphisms), each with its own valid existence. This clone is substantially in agreement with the reference, but a complete review of all prevailing variants is recommended prior to use. [More info](#)

OTI Annotation:	This clone was engineered to express the complete ORF with an expression tag. Expression varies depending on the nature of the gene.
Components:	The ORF clone is ion-exchange column purified and shipped in a 2D barcoded Matrix tube containing 10ug of transfection-ready, dried plasmid DNA (reconstitute with 100 ul of water).
Reconstitution Method:	<ol style="list-style-type: none">1. Centrifuge at 5,000xg for 5min.2. Carefully open the tube and add 100ul of sterile water to dissolve the DNA.3. Close the tube and incubate for 10 minutes at room temperature.4. Briefly vortex the tube and then do a quick spin (less than 5000xg) to concentrate the liquid at the bottom.5. Store the suspended plasmid at -20°C. The DNA is stable for at least one year from date of shipping when stored at -20°C.
RefSeq:	NM_004068.4
RefSeq Size:	1958 bp
RefSeq ORF:	1308 bp
Locus ID:	1173
UniProt ID:	Q96CW1
Cytogenetics:	3q27.1
Domains:	Adap_comp_sub
Protein Families:	Druggable Genome
Protein Pathways:	Endocytosis, Huntington's disease
Gene Summary:	This gene encodes a subunit of the heterotetrameric coat assembly protein complex 2 (AP2), which belongs to the adaptor complexes medium subunits family. The encoded protein is required for the activity of a vacuolar ATPase, which is responsible for proton pumping occurring in the acidification of endosomes and lysosomes. The encoded protein may also play an important role in regulating the intracellular trafficking and function of CTLA-4 protein. Three transcript variants encoding different isoforms have been found for this gene. [provided by RefSeq, Jul 2015]

Product images:



Circular map for RG218161