

Product datasheet for **RG218160**

SOS2 (NM_006939) Human Tagged ORF Clone

Product data:

Product Type:	Expression Plasmids
Product Name:	SOS2 (NM_006939) Human Tagged ORF Clone
Tag:	TurboGFP
Symbol:	SOS2
Synonyms:	NS9; SOS-2
Mammalian Cell Selection:	Neomycin
Vector:	pCMV6-AC-GFP (PS100010)
E. coli Selection:	Ampicillin (100 ug/mL)
ORF Nucleotide Sequence:	>RG218160 representing NM_006939 Red=Cloning site Blue=ORF Green=Tags(s)

TTTTGTAATACGACTCACTATAGGGCGGCCGGAATTCGTCGACTGGATCCGGTACCGAGGAGATCTGCC
GCC**CGATCGCC**

ATGCAGCAGGCGCCGAGCCTTACGAGTCTTCAGCGAGGAGAACAGTCCGAAATGGCGGGGACTGTTGG
TCTCGGCCCTGCGGAAGTTTCAGGAACAAGTGCATCCCCTCTCTCAGCTAATGAAGAGTCTCTCTATTA
TATTGAAGAGCTGATTTTTCAGCTGCTTAATAAATATGCATGGCCAGCCAAGGACTGTTCAAGATGTA
GAGGAGCGAGTTCAGAAGACCTTCTCACCAATTGATAAATGGCCATTGCTGATGCACAATCTGCTA
TAGAAAAACGAAAACGAAGAAATCCTCTTTACTGCCTGTGGACAAAATCCATCCTTCGTTGAAGGAAGT
ATTAGGGTACAAAGTGGACTACCATGTATCCCTATATATTGTGGCTGACTAGAGTATATCTCAGCTGAT
ATTTTAAATTTGGCTGGTAATTATGTTTTAATATCCGGCATTATGAAATATCTCAGCAGGACATTAAGG
TGTCATGTGTGCGGATAAGGTTTTGATGGACATGTTTATGATCAGGATGACATAGGTTTGGTTTCTCTCTG
TGAAGATGAACCTAGTCTTCTGGTGAATTAAGTACTATGATCTTGTCAGAAGTAAATCGCAGAAGAA
AGACAGTATCTACGGGAATTAATATGATCATAAAAGTGTTCGAGAAGCCTTTCTTTCTGATAGAAAGC
TGTTTAAACCTTCTGATATCGAAAAGATTTTATGTAACATTTTCAGATATACATGAATTGACTGTGAAACT
TTTAGGTTTGATTGAAGACACAGTTGAAATGACTGATGAAAGCAGTCCATCCCTTAGCTGGCAGCTGT
TTTGAAGATTTGGCAGAAGAGCAAGCATTGATCCTTATGAAACATTATCACAGGACATTTCCACCAG
AGTTTCATGAACATTTCAATAAATTTGATGGCCAGACCTGCAAGTTGCTCTACACTTTCAGTCCATGCTGA
TGGTTTTAAAGAGGCAGTTCGTTATGTCCTTCCACGTCTTATGCTGGTGCAGTGTATCACTGTTGGCAC
TACTTTGAGTTACTAAAGCAATTTGAAAGCATGATGTAAGAACAAGAAGCAGAGAATGTTTGAACCAAG
CTATTACTGCTCTCATGAATCTCCAAGGTAGCATGGACCGAATTTACAAGCAGTATTCACCTAGACGTCG
ACCTGGAGATCCTGTTTGCCTTTTTATAGTCACCAATTAAGAAGCAAACACCTGGCTATCAAAAAATG
AATGAAATTCAGAAAAATATCGATGGATGGGAAGGCAAAGATATTGGACAGTGTGTAATGAATTCATTA
TGGAGGGACCATTGACAAGAATCGGTGCCAAACATGAACGGCATATTTTTCTGTTTGTGCTTAATGAT
CAGTTGTAACCTAATCATGGCCAGACTCGGCTCCAGGTTACAGTAGTGCAGAATACAGGTTAAAAAGAA



[View online »](#)

AAATTTGTCATGAGGAAAATACAAATTTGTGATAAAGAAGATACTTGTGAGCACAAGCATGCATTTGAAT
TAGTATCCAAAGATGAGAACAGCATAATATTTGCTGCTAAGTCTGCTGAAGAAAAACAACCTGGATGGC
AGCCCTTATTTCTCTTCATTATCGTAGTACTCTAGATCGAATGTTAGATTCAGTATTATTGAAAGAAGAA
AATGAGCAACCACTGAGATTACCAAGTCTGAAGTATATCGTTTTGTAGTAAAAGACTCTGAGGAAAAACA
TTGTTTTTGAAGACAACCTGCAAAGTAGAAGTGGCATCCCCATTATTAAGGAGGAACTGTAGTAAAT
AATTGAAAGGTTAACATATCATATGTATGCAGATCCCAATTTTGTTCGTACTTTTCTTACCACATATCGT
TCATTTTGTAAACCACAGGAATTGCTGAGCTTACTGATTGAACGGTTTGAATTTCCAGAGCCAGAACCTA
CTGACGCAGACAAATTGGCAATAGAGAAAAGCGAGCAGCCAATCAGTGCAGACCTTAAAAGATTTTCGCAA
GGAATATGTCCAACCACTACAACCTAGGATCTTAAATGATTTTCGGCATTGGGTTGAACATCATTTTTAT
GACTTTGAAAGAGACTTGGAAATGCTTGAAGACTAGAATCCTTCATTTCAAGTGTAAAGAGGAAAGCTA
TGAAAAATGGGTAGAGTCAATTGCTAAGATCATCAGGAGGAAGAAGCAAGCTCAGGCAAACGGAGTAAG
CCATAATATTACCTTTGAAAGTCCACCTCCACCAATTGAATGGCATATCAGCAAACAGGACAGTTTGAA
ACATTTGATCTCATGACACTTCACTCAATAGAAATGCACGTGAGTGCAGCTTTTGGAGTCTGATCTTT
ACAGGAAAGTTCAACCGTCTGAACCTGTAGGGAGTGTGTGGACCAAGAAGATAAAGAAAATAATCTCC
AAATTTATTAATAATGATTCGCATACCCAAATCTCACCTCTGGTTTGAATAATGCATTGTGGAAGCA
GAAAAATTTGAAGAACGGGTGGCAGTACTAAGTAGAATTATAGAAATTCGCAAGTTTTTCAAGTTTGA
ATAATTTCAATGGCGTATTGGAGATAGTCAAGTGCAGTAAATTCAGTGTCAAGTATACAGACTAGACCATAC
CTTTGAGGCACTGCAGGAAAGGAAAAGGAAAATTTTGGACGAAGCTGTGGAATTAAGTCAAGATCACTTT
AAAAATACCTAGTAAAACCTAAGTCAATCAATCCACCTGTGTGCCTTTTTTGGAAATATATTTAACAA
ATATTCTGAAGACCGAAGAAGGGAATAATGATTTTTTAAAAAAGAAAGGGAAAGATTTAATCAATTTAG
TAAGAGGAGGAAAGTAGCTGAAATTAAGTGGAGAAATCAGCAGTATCAGAATCAGCCTTACTGTTACGG
ATAGAACCAGATATGAGGAGATCTTTGAAAACCTAACCCATGGGAAGTGCATCTGAAAAAGAGTTTA
CAGATTATTTGTTCAACAAGTCACTAGAAATGAACCTCGAACTGCAAACAGCCACCTCGATTTCCTAG
GAAATCAACTTTTTCTTAAAATCTCCTGGAATAAGGCCTAACACAGGCCGACATGGCTCTACCTCAGGT
ACTTTACGAGGTCAACCAACACCATTAGAAAGAGAACCATGTAATAAAGCTTTAGTCGGATTGCTGAAA
CTGAGCTGGAATCAACAGTGTGACGACCAACCTCTCAAATACACCATCTACTCCACCAGTATCTGCTTC
TTCAGACCTTAGTGATTTTTAGATGTGGATCTCAACAGCTCCTGTGGCAGCAATAGCATCTTTGCTCCA
GTGCTTTTGCCACATTCAAAGTCTTTCTTTAGTTCATGTGGTAGTTTACATAAACTAAGTGAAGAGCCCC
TGATTCTCCTCCTCTCCTCCTCGAAAAAGTTTGTATCATGATGCTTCAAATTTCAAGGAAATATGAA
ATCTGATGATGATCCTCCTGCTATTCACCGAGACAGCCTCCTCCTCAAAGGTAACCCAGAGTTCTCT
GTTCTACTGGTGCATTTGATGGCCTCTGCATAGTCCACCTCCGCCACCACCAAGAGATCCTCTCCTG
ATACCCCTCCACCAGTTCCCTTCGGCCTCCAGAACACTTTATAAACTGTCCATTTAATCTTCAGCCACC
TCCACTGGGGCATCTTACAGAGATTGAGACTGGCTCAGAGACATTAGTACGTGTCAAATTCGCCAAGC
ACTCCTCCTAGCACACCCTCTCAAGGGTACCGCGTCGATGCTATGTGCTCAGTTCTAGTCAGAATAATC
TTGCTCATCCTCCAGCTCCCCCTGTTCCACCAAGGCAGAAATCAAGCCCTCATCTGCCCCAACTGCCACC
AAAGACTTACAAACGGGAGCTTTTCGACCCCCATTGTACAGACTGCCTTTGCTAGAAAAATGCAGAACT
CCCCAA

ACGCGTACGCGGCCGCTCGAG - GFP Tag - GTTTAA

Protein Sequence: >RG218160 representing NM_006939
 Red=Cloning site Green=Tags(s)

```

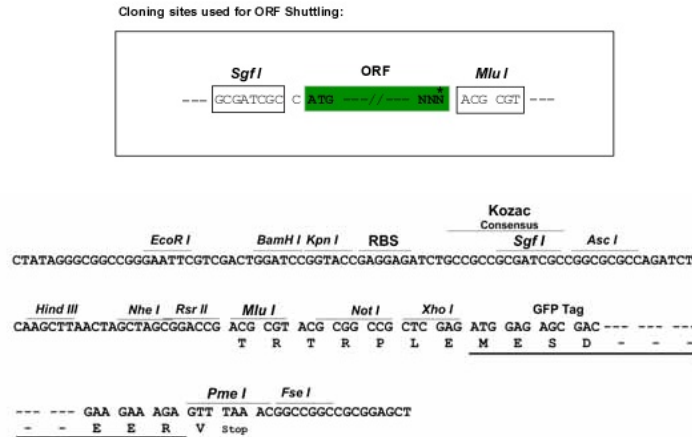
MQQAPQPYEFFSEENSPKWRGLLVSALRKVQEQVHPTLSANEESLYYIEELIFQLLNKLCMAQPRTVQDV
EERVQKTFPHPIDKWAIDAQSAIEKRKRRLPLLLPVDKIHPSLKEVLGYKVDYHVSLEYIVAVLEYISAD
ILKLAGNYVFNIRHYEISQODIKVSMCADKVLMDMFDQDDIGLVSLCEDEPSSSGELNYYDLVRTEIAEE
RQYLRELNMIKVFREAFVSDRKLKFKPSDIEKIFSNISDIHELTVKLLGLIEDTVEMTDESSPHLAGSC
FEDLAEEQAFDPYETLSQDILSPEFHEHFNKLMARPAVALHFQSIADGFKEAVRYVLPRLMLVPVYHCWH
YFELLKQLKACSEEQEDRECLNQAITALMNLQGSMDRIYKQYSPRRRPGDPVPCPFYSHQLRSKHLAIKKM
NEIQKNIDGWEGKDIGQCCNEFIMEGPLTRIGAKHERHIFLFDGLMISCKPNHGQTRLPGYSSAEYRLKE
KFVYMRKIQCDKEDTCEHKHAFELVSKDENSIIFAAKSAEEKNNWMAALISLHYRSTLDRMLDSVLLKEE
NEQPLRLPSPEVYRFVVKDSEENIVFEDNLQSRSGIPIIKGGTVVKLIERLTYHMYADPNFVRTFLTTYR
SFCKPQELL SLLIERFEIPEPEPTDADKLAIEKGEQPI S ADLKRFRKEYVQPVQLRILNVFRHWVEHHFY
DFERDLELLERLESFISVVRGKAMKQWESI AKI IRRKKQAQANGVSHNITFESPPPIEWHISKPGQFE
TFDLMTLHPIEIARQLTLL ESDLYRKVQPS E LVGSVWTKEDKEINSPNLLKMIRHTTNLTLWFECIVEA
ENFEERVAVLSRIEILQVFQDLN NFNGLVLEIVSAVNSVSVYRLDHTFEALQERKRKILDEAVELSQDHF
KKYLVKLSINPPCVPFGIYLTNLIKTEEGNDFLKKKGKDLINFSKRKVAEITGEIQYQNPYCLR
IEPDMRRFFENL NPMGSA SEKEFTDYL FNKSL EIEPRNCKQPPRFPRKSTFSLKSPGIRPNTGRHGSTSG
TLRGHPTLEREPCKISFSRIAETELESTVSAPTSPNTPSTPPVSASSDLSVFLDVLN SSCGSNSIFAP
VLLPHSKSFFSSCGSLHKLSEEP LIPPLPPRKKFDHDASNSKGNMKSDDPPAIPPRQPPPKVKPRVP
VPTGAFDGPLHSPPPPPRDP LPTPPPVL RPPEHF INCPFNLP PPLGHLHRSDWLRD I STCPNSPS
TPPSTSPRVPRRCYVLS SSQNNLAHPPAPPVPPRQNSSPHLPKLPKTYKRELSHPPL YRLPLENAET
PQ
    
```

TRTRPLE - GFP Tag - V

Chromatograms: https://cdn.origene.com/chromatograms/ja3807_h08.zip

Restriction Sites: SgfI-MluI

Cloning Scheme:

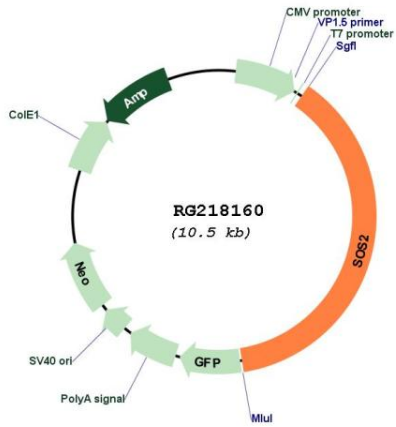


ACCN: NM_006939

ORF Size: 3996 bp

OTI Disclaimer:	<p>Due to the inherent nature of this plasmid, standard methods to replicate additional amounts of DNA in E. coli are highly likely to result in mutations and/or rearrangements. Therefore, OriGene does not guarantee the capability to replicate this plasmid DNA. Additional amounts of DNA can be purchased from OriGene with batch-specific, full-sequence verification at a reduced cost. Please contact our customer care team at custsupport@origene.com or by calling 301.340.3188 option 3 for pricing and delivery.</p> <p>The molecular sequence of this clone aligns with the gene accession number as a point of reference only. However, individual transcript sequences of the same gene can differ through naturally occurring variations (e.g. polymorphisms), each with its own valid existence. This clone is substantially in agreement with the reference, but a complete review of all prevailing variants is recommended prior to use. More info</p>
OTI Annotation:	<p>This clone was engineered to express the complete ORF with an expression tag. Expression varies depending on the nature of the gene.</p>
Components:	<p>The ORF clone is ion-exchange column purified and shipped in a 2D barcoded Matrix tube containing 10ug of transfection-ready, dried plasmid DNA (reconstitute with 100 ul of water).</p>
Reconstitution Method:	<ol style="list-style-type: none"> 1. Centrifuge at 5,000xg for 5min. 2. Carefully open the tube and add 100ul of sterile water to dissolve the DNA. 3. Close the tube and incubate for 10 minutes at room temperature. 4. Briefly vortex the tube and then do a quick spin (less than 5000xg) to concentrate the liquid at the bottom. 5. Store the suspended plasmid at -20°C. The DNA is stable for at least one year from date of shipping when stored at -20°C.
RefSeq:	NM_006939.4
RefSeq Size:	5313 bp
RefSeq ORF:	3999 bp
Locus ID:	6655
UniProt ID:	Q07890
Cytogenetics:	14q21.3
Protein Pathways:	<p>Acute myeloid leukemia, B cell receptor signaling pathway, Chemokine signaling pathway, Chronic myeloid leukemia, Colorectal cancer, Dorso-ventral axis formation, Endometrial cancer, ErbB signaling pathway, Fc epsilon RI signaling pathway, Focal adhesion, Gap junction, Glioma, GnRH signaling pathway, Insulin signaling pathway, Jak-STAT signaling pathway, MAPK signaling pathway, Natural killer cell mediated cytotoxicity, Neurotrophin signaling pathway, Non-small cell lung cancer, Pathways in cancer, Prostate cancer, Regulation of actin cytoskeleton, Renal cell carcinoma, T cell receptor signaling pathway</p>
Gene Summary:	<p>This gene encodes a regulatory protein that is involved in the positive regulation of ras proteins. Mutations in this gene are associated with Noonan Syndrome-9. [provided by RefSeq, Jul 2016]</p>

Product images:



Circular map for RG218160