

Product datasheet for **RG218146**

Laminin (LAMC3) (NM_006059) Human Tagged ORF Clone

Product data:

Product Type:	Expression Plasmids
Product Name:	Laminin (LAMC3) (NM_006059) Human Tagged ORF Clone
Tag:	TurboGFP
Symbol:	LAMC3
Synonyms:	OCCM
Mammalian Cell Selection:	Neomycin
Vector:	pCMV6-AC-GFP (PS100010)
E. coli Selection:	Ampicillin (100 ug/mL)
ORF Nucleotide Sequence:	>RG218146 representing NM_006059 Red=Cloning site Blue=ORF Green=Tags(s)

TTTTGTAATACGACTCACTATAGGGCGGCCGGAATTCGTCGACTGGATCCGGTACCGAGGAGATCTGCC
GCC**CGATCGCC**

ATGGCGCGGCTGCGCTTCTGCTGGGGCTGGCGCTGCTGGCACCGCGGGCGGCCGCGGGCATGGGCG
CGTGCTATGACGGCGCAGGGCGCCCGCAGCGCTGCCTGCCGGTGTTCGAGAACCGGGCGTTTGGGCGGT
CGCCAGGCTCGCACACGTGCGGCAGCCCGCCGAGGACTTCTGTCCACAGTGGGCGCCGCGGGCGCG
GGGCTCATTGCCAGCGCTGCGACGCCCGCCAGCCCGAGCCACCAACGCCTCTACCTCACCGACT
TCCACAGCCAGGACGAGAGCACCTGGTGGCAGAGCCCGTCCATGGCCTTCGGCGTGCAGTACCCACCTC
GGTCAACATCACCTCCGCCTAGGGAAGGCTTATGAGATCACGTATGTGAGGCTGAAGTTCCACACCACT
CGCCCTGAGAGCTTTGCCATCTACAAGCGCAGCCGCGCCGACGGCCATGGGAGCCCTACCAATTTACA
GCGCTCTGCCAGAAGACCTACGGCCGGCCCGAGGGCCAGTACCTGCGCCCGCGGAGGACGAGCGGT
GGCCTTCTGCACCTCTGAGTTTACGCGACATCTCCCGCTGAGTGGCGGCAACGTGGCCTTCTCACCCCTG
GAGGGCCGGCCAGCGCCTACAACCTCGAGGAGAGCCCTGGGCTGCAGGAGTGGTCAACAGCACCGAAC
TCCTCATCTCTAGACCGGCTCAACACGTTTGGGACGACATCTTAAGGACCCCAAGGTGCTCCAGTC
CTACTATTATGCCGTGTCCGACTTCTGTGGGCGGCAAGTGAAGTGAACGGGCATGCCAGCGAGTGC
GGCCCCGAGTGGCAGGCCAGTTGGCCTGCCGGTGGCAGCACAAACACCAGCCAGACAGTGTGAGCGCT
GCCTGCCCTTCTCCAGGACCGCCCGTGGGCCCGGGCACCGCGAGGCTGCCACGAGTGTCTGCCCTG
CAACTGCAAGTGGCCGCTCCGAGGAATGCACGTTTGTGCGGAGCTCTCCGACGACAGGCCACGGCGGG
CGCTGTCAACACTGCCGTGACCACAGCTGGGCCACTGTGAGCGCTGTGAGGAAATTTCTATCACT
GGGACCCGCGGATGCCATGCCAGCCCTGTGACTGCCAGTGGCAGGCTCCCTACACCTCCAGTGCAGTGA
CACAGGCACCTGCGCCTGCAAGCCACGGTACTGGCTGGAAGTGTGACCGCTGTCTGCCGGGTTCCAC
TCGCTCAGTGAGGGAGGCTGCAGACCTGCACTGCAATCCCGCTGGCAGCCTGGACACCTGTGACCCCG
GCAGTGGGCGCTGCCCTGCAAAGAGAATGTGGAAGGCAACCTATGTGACAGATGTGCCCGGGGACCTT
TAACCTGCAGCCCAATCCAGCTGGCTGCAGCAGCTGTTTCTGCTATGCCACTCAAGGTGTGCGCG



TCCACTGCCAGTTCAGGTGCATCACATCCTCAGCGATTTCCACCAGGGAGCCGAAGGCTGGTGGGCCA
 GAAGTGTGGGGGCTCTGAGCACCCCAACAATGGAGCCAAATGGGGTCTCTGAGCCAGAAGACGA
 GGAGGAGCTCACAGCACCAGGAAGTTCCTGGGAGACCAGCGTTTACAGTATGGGAGCCCTCATACTG
 ACCTTCCGGGTGCCCCCGGGGACTCCCCACTCCCTGTACAGTGTAGGCTGGAAGGGACAGGCTTGGCC
 TGTCCCTGAGGCACTTAGCCTGTCTGGCCCCAGGATGCCAGGGCATCCAGGGAGGTAGAGCTCAGGT
 TCCACTGCAGGAGACCTCCGAGGACGTGGCCCCCTCCACTGCCCCCTTCCACTTCCAGCGGCTCCTCGCC
 AACCTGACCAGCCTCCGCTCCGCGTCACTCCCGCCCCAGCCCTGCCGGTCCAGTGTCTGTAGGAGG
 TCCGGCTCACATCCGCCCGGCCAGGGCTTCCCGGCCAGCCTCCTGGGTGGAGATTTGTTTATGTCCAC
 TGCTACACGGGCCAGTTCTGTGAATCCTGTGCTCCGGGATACAAGAGGGAGATGCCACAGGGGGTCCC
 TATGCCAGCTGTGTCCCCTGCACCTGTAACCAGCATGGCACCTGTGACCCCAACACAGGGATCTGTGTCT
 GCAGCCACCATAACGAGGGCCCATCCTGTGAACGCTGTTTCCAGGTTTCTATGGCAACCCTTTCGCGGG
 CCAAGCCGACGACTGCCAGCCCTGTCCCTGCCCTGGCCAGTGGCCTGTACGACCATCCAGAGAGCCGG
 GAGGTGGTGTGTACCACTGCCCCCGGGCCAGAGAGGGCGGCTGTGAGGTCTGTGATGATGGCTTTT
 TTGGGGACCCGCTGGGGCTTTTGGGCACCCAGCCCTGCCACCAGTGCAGTGTAGCGGGAACGTGGA
 CCCAATGCCGTGGGCAACTGTGACCCCTGTCTGGCCACTGCCTGCGCTGCCTGCACAACACCACGGGT
 GACCACTGTGAGCACTGTAGGAAGGCTTCTACGGGAGCGCCCTGGCCCTCGACCCGACAGAAATGCA
 TGCCCTGCAGCTGTACCCACAGGGCTCCGTCACTGAGCAGATGCCCTGCAGCCAGTGACAGGCCAATG
 CTCCTGCCTGCCTCATGTGACTGCACGGGACTGCAGCCGCTGCTACCCCTGGCTTCTTCGACCTCCAGCT
 GGGAGGGGCTGCCGGAGCTGCAAGTGTACCCACTGGGCTCCCAGGAGGACCAGTGCCATCCCAAGACTG
 GACAGTGCACCTGCCGCCAGGTGTACAGGCCAGGCCTGTGACAGGTGCCAGTGGGTTTCTTCGGCTT
 CTCCATCAAGGGTGCCTGGGCTGCAGGTGCTCCCACTGGGCGTGCCTCGGCCAGTGCCACGAGAAC
 GGCACATGCGTGTGCAGGCTGGCTTCGAGGGTACAAATGTGACCGCTGCCACGACAACCTTCTTCTCA
 CGGCAGCGCACACACTGCCAGCAATGCTCCGCTGCTACGCCCTGGTGAAGGAGGAGCCAGCCAGTA
 GAAGGCCAGACTGACTTTGACGGAGGGGTGGCTCCAAGGTCCGACTGTGGCAGTCCCTGGGGACCACTA
 GACATTCTGCTGGGAGAGGCCCAAGGGGGACGTCTACAGGGCCATCCTGCTTCCAGGGGCTCGGG
 AAGCCTTCTGGAGCAGATGATGAGCCTCGAGGGTGTGTCAAGGCCGCCGGGAGCAGTGCAGAGGCT
 GAACAAGGGTGCCGCTGTGCCAGGCCGATCCAGAAGACCTGCACCCAGCTGGCAGACCTGGAGGCA
 GTGCTGGAGTCTCGGAAGAGGAGATTCTGCATGCAGTGCATTCTCGCGTCTCTGGAGATTCTCAGG
 AAGGTCCCAGTACGCCACCAATGGAGCCACCTGGCCACAGAGGCCCTGCCCTCGCCAGGAGCCACAG
 AGACACCCACCAAGATCGCAGCCACTGCTTGGAGGGCCCTGCTCGCCTCAACACCAGTACGCGCTT
 CTCTGGAATCTGCTGGAGGGAAGGTGGCCCTAGAGACCCAGCGGACCTGGAGGACAGGTACCAGGAGG
 TCCAGGGGCCAGAAAGCACTGAGGACGGCTGTGGCAGAGGTGCTGCCTGAAGCGAAAGCGTGTGGC
 CACCGTGCAGCAAGTTGGCGCAGATACAGCCCCGTACCTGGCCTTGTGGCTTCCCGGGAGCTCTGCCT
 CAGAAGTCCCAGGCTGAAGACCTGGGCCTGAAGGCCAAGGCCCTGGAGAAGACAGTTGCATCATGGCAGC
 ACATGGCCACTGAGGCTGCCCAACCCTCCAGACTGCTGCCAGGCGACGCTACGGCAAACAGAACCCTT
 CACAAAGCTGCACCAGGAGGCCAGAGCCGCCCTGACCCAGGCTTCTCATCTGTCCAGGCTGCGACAGTG
 ACTGTCTATGGGAGCCAGGACTCTGCTGGCTGATCTGGAAGGAATGAAGTGCAGTTTCCCGGCCAAGG
 CAAGCAGGCGGAGAGGATGCTGGGAAACGCGGCCCTTTTCTCCAGTGCCAAGAAGAAGGGCAGAGAA
 GCAGAGGTGTTGGCCAAGGACAGTGCAAAGCTTGCCAAGGCCCTTGTGAGGGAGCGGAAACAGGCGCAC
 GCCGTGCCAGCAGGCTCACCAGCCAGACGCAAGCCACGCTCCAACAGGCGTCCCAGCAGGTGCTGGCGTC
 TGAAGCACGCAGACAGGAGCTGGAGGAAGCTGAGCGGGTGGGTGCTGGGCTGAGCGAGATGGAGCAGCAG
 ATCCGGGAATCGCGTATCTCACTGGAGAAGGACATCGAGACCTTGTGAGAGCTGCTTGCAGGCTGGGGT
 CGCTGGACACCCATCAAGCCCCAGCCAGGCCCTGAACGAGACTCAGTGGGCACTAGAACGCTGAGGCT
 GCAGCTGGGCTCCCCGGGTCTTGCAGAGGAACTCAGTCTGCTGGAGCAGGAATCCAGCAGCAGGAG
 CTGCAGATCCAGGGCTTCGAGAGTGACCTCGCCGAGATCCGCGCCGACAAACAGAACCTGGAGGCCATTC
 TGCACAGCCTGCCGAGAAGTGTCCAGCTGGCAG

ACGCGTACGCGGCCGCTCGAG - GFP Tag - GTTTAA

Protein Sequence: >RG218146 representing NM_006059
 Red=Cloning site Green=Tags(s)

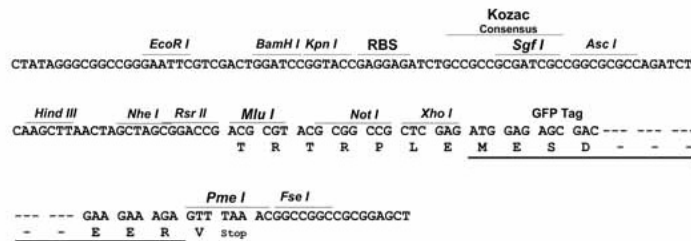
MAAAALLLGLALLAPRAAGAGMGACYDGAGRPQRCLPVFENAAFGRLAQASHTCGSPPEDFCPHVGGAAGA
 GAHCQRCDADPQRHHNASYL TDFHSQDESTWWQSPSMAFGVQYPTSVNITLRLGKAYEITYVRLKFHTS
 RPEFSFAIYKRSRADGPWEFYQFYASACQKTYGRPEGQYL RPEGEDERVAFACTSEFSDISPLSGGNVAFSTL
 EGRPSAYNFEESPGLQEWVTSTELLISLDRLNTFGDDIFKDPKVLQSYYYAVSDFSVGGRCCKNGHASEC
 GPDVAGQLACRCQHNTTGTDCERCLPFFQDRPWARGTAEAAHECLPCNCSGRSEECTFDRELFRSTGHGG
 RCHHCRDHTAGPHCERCQENFYHWDPRMPCQPCDCQSAGSLHLQCDDTGTCAKPTVTGWKCDRCLPGFH
 SLSEGGCRPCTCNPAGSLDTC DPRSGRCPCKENVEGNLCDRCRPGTFNLQPHNPAGCSSCF CYGHKSVCA
 STAQFQVHHILSDFHQGAEGWWARSVGGSEHPPQWSPNGVLLSPEDEEELTAPGKFLGDQRF SYGQPLIL
 TFRVPPGDSPLPVQLRLEGTGLALSLRHSSLGSPQDARASQGGRAQVPLQETSEDVAPPLPPHFQRLLA
 NLTSLRLRVSPGSPAGPVFLTEVRLTSARPGLSPPASWVEICSCPTGYTGQFCESCAPGYKREMPQGGP
 YASCVPCTCNQHGTCDPNTGICVCSHHTEGPSCERCLPGFYGNPFAGQADDCQPCPCPGQSACTTIPESR
 EVVCTHCPPGQRRRCEVDDGFFGDPLGLFGHPQPCHQCQCSGNVDPNAVGNCDPLSGHCLRCLHNTTG
 DHCEHCQEGFYGSALAPRPADKCMPCSCHPQGSVSEQMPCDPVTGQCSCSLPHVTARDCSRYPGFDFLQP
 GRGCRSCKCHPLGSQEDQCHPKTGQCTCRPGVTGQACDRCQLGFFGFSIKGCRACRCSPLGAASAQCHEN
 GTCVCRPGFEGYKCDRCHDNFFLTADGTHCQQCPCSYALVKEEAAKLKARLTLTEGWLQGSDCGSPWGPL
 DILLGEAPRGDVYQGHLLPGAREAFLEQMMSLEGAVKAAREQLQLRNLKGARCAQAGSQKTCTQLADLEA
 VLESSEEEILHAAAILASLEIPQEGSPQTKWSHLATEARALARSHRDTATKIAATAWRALLASNTSYAL
 LWNLEGRVALETQRDLEDRYQEVQAAQKALRTAVAELPEAESVLATVQQVGADTAPYLALLASPGALP
 QKSRAEDLGLKAKALEKTVASWQHMAEAARTLQTAQAATLRQTEPLTKLHQEARAALTQASSSVQATV
 TVMGARTLLADLEGMKLQFPRPKDQAALQRKADSVSDRLADTRKTKQAERMLGNAAPLSSSAKKGRE
 AEVLAKDSAKLAKALLRERKQAHRRASRLTSQTQATLQQASQQVLA SEARRQELEEAERVGAGLSEMEQQ
 IRESRISLEKDIETLSELLARLGSLDTHQAPAQALNETQWALERLRLQLGSPGSLQRKLSLLEQESQQQE
 LQIQGFESDLAEIRADKQNLEAILHSLPENCASWQ

TRTRPLE - GFP Tag - V

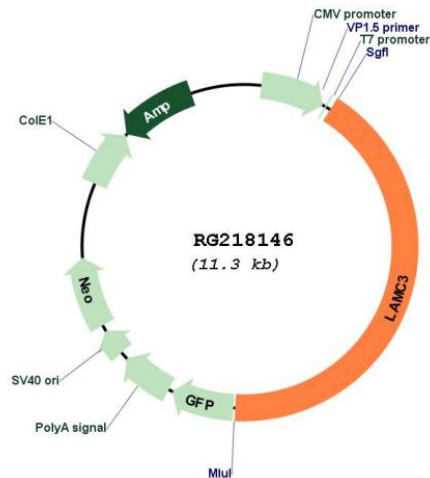
Restriction Sites: SgfI-MluI

Cloning Scheme:

Cloning sites used for ORF Shutting:



Plasmid Map:



ACCN: NM_006059

ORF Size: 4725 bp

OTI Disclaimer: The molecular sequence of this clone aligns with the gene accession number as a point of reference only. However, individual transcript sequences of the same gene can differ through naturally occurring variations (e.g. polymorphisms), each with its own valid existence. This clone is substantially in agreement with the reference, but a complete review of all prevailing variants is recommended prior to use. [More info](#)

OTI Annotation: This clone was engineered to express the complete ORF with an expression tag. Expression varies depending on the nature of the gene.

Components: The ORF clone is ion-exchange column purified and shipped in a 2D barcoded Matrix tube containing 10ug of transfection-ready, dried plasmid DNA (reconstitute with 100 ul of water).

Reconstitution Method:

1. Centrifuge at 5,000xg for 5min.
2. Carefully open the tube and add 100ul of sterile water to dissolve the DNA.
3. Close the tube and incubate for 10 minutes at room temperature.
4. Briefly vortex the tube and then do a quick spin (less than 5000xg) to concentrate the liquid at the bottom.
5. Store the suspended plasmid at -20°C. The DNA is stable for at least one year from date of shipping when stored at -20°C.

RefSeq: [NM_006059.2](#), [NP_006050.2](#)

RefSeq Size:	5100 bp
RefSeq ORF:	4728 bp
Locus ID:	10319
UniProt ID:	Q9Y6N6
Cytogenetics:	9q34.12
Protein Pathways:	ECM-receptor interaction, Focal adhesion, Pathways in cancer, Small cell lung cancer
Gene Summary:	<p>Laminins, a family of extracellular matrix glycoproteins, are the major noncollagenous constituent of basement membranes. They have been implicated in a wide variety of biological processes including cell adhesion, differentiation, migration, signaling, neurite outgrowth and metastasis. Laminins are composed of 3 non identical chains: laminin alpha, beta and gamma (formerly A, B1, and B2, respectively) and they form a cruciform structure consisting of 3 short arms, each formed by a different chain, and a long arm composed of all 3 chains. Each laminin chain is a multidomain protein encoded by a distinct gene. Several isoforms of each chain have been described. Different alpha, beta and gamma chain isomers combine to give rise to different heterotrimeric laminin isoforms which are designated by Arabic numerals in the order of their discovery, i.e. alpha1beta1gamma1 heterotrimer is laminin 1. The biological functions of the different chains and trimer molecules are largely unknown, but some of the chains have been shown to differ with respect to their tissue distribution, presumably reflecting diverse functions in vivo. This gene encodes the gamma chain isoform laminin, gamma 3. The gamma 3 chain is most similar to the gamma 1 chain, and contains all the 6 domains expected of the gamma chain. It is a component of laminin 12. The gamma 3 chain is broadly expressed in skin, heart, lung, and the reproductive tracts. In skin, it is seen within the basement membrane of the dermal-epidermal junction at points of nerve penetration. Gamma 3 is also a prominent element of the apical surface of ciliated epithelial cells of lung, oviduct, epididymis, ductus deferens, and seminiferous tubules. The distribution of gamma 3-containing laminins along ciliated epithelial surfaces suggests that the apical laminins are important in the morphogenesis and structural stability of the ciliated processes of these cells. [provided by RefSeq, Aug 2011]</p>