

Product datasheet for **RG218140**

ABCA12 (NM_015657) Human Tagged ORF Clone

Product data:

Product Type:	Expression Plasmids
Product Name:	ABCA12 (NM_015657) Human Tagged ORF Clone
Tag:	TurboGFP
Symbol:	ABCA12
Synonyms:	ARCI4A; ARCI4B; ICR2B; LI2
Mammalian Cell Selection:	Neomycin
Vector:	pCMV6-AC-GFP (PS100010)
E. coli Selection:	Ampicillin (100 ug/mL)
ORF Nucleotide Sequence:	>RG218140 representing NM_015657 Red=Cloning site Blue=ORF Green=Tags(s)

TTTTGTAATACGACTCACTATAGGGCGGCCGGAATTCGTCGACTGGATCCGGTACCGAGGAGATCTGCC
GCC**CGATCGCC**

ATGTTTACCTATATAAAATTACTTTCAGGTGACTCCGATAATATAACGCATGTGTGGAATGAGGATG
ATGGACAGACCTTATCTCCAAGCAGTCTGGCTGCACAGCTCCTAATTCTGGAAAACCTTGAAGATGCCCT
CTTAAATATATCAGCAAATAGTCCTTATATTCTTACTTGGCATGTGTGAGAAATGTGACTGACAGTTTG
GCCAGAGGTTCCACAGAAAATCTAAGACTCCTGCAGTCCACAATACGATTTAAAAATCTTTTCTTCGCA
ATGTTTCCATGAAGATTACTTTCTCCAGTTCCTGAAGTCTAAAATCAAACACTGTCTCAACTTCGAAA
CTTGACCGAATTCTTTGTGAATCTGAACTTTTCAGTTTGATAGAGAAGTCATGCCAGCTCTCTGATATG
AGCTTTGGGAGCCTGTGTGAAGAAAGTGAGTTTGATCTGCAACTCCTCGAAGCGGCAGAGCTGGGCACCG
AAATAGCAGCCAGCTTACTGTACCATGACAATGTCATATCTAAAAAGTGAGAGATTTGCTGACTGGAGA
TCCAAGCAAAATTAATTTAAATATGGATCAGTTTCTAGAACAGGCACTGCAATGAATTACTTGGAAAAT
ATCACTCAGTTAATACCGATCATAGAAGCCATGCTGCATGTCAATAACAGTGCAGATGCTTCTGAAAAGC
CAGGTCAGTTACTAGAAATGTTTAAAAATGTTGAAGAGCTGAAAGAAGATTTAAGGAGAACAACAGGAAT
GTCCAACAGGACTATTGACAAGTTGCTGGCCATCCCATCCCTGATAATAGAGCTGAGATTATTTCTCAG
GTGTTCTGGCTGCATTCCTGTGATACTAATATCACCCTCCCAACTAGAAGATGCAATGAAAGAATTCT
GCAACCTGTCTTTTTCAGAGAGATCCCGCAGTCTTACCTCATCGACTCACCTTCTGCACTACTTAA
CATTTACAACCTCACATACAAGGTGTTTTTCCCGAGGAAAGATCAAAGCCAGTAGAAAAGATGATGGAG
CTTTCATAAGACTAAAAGAGATTCTCAATCAGATGGCTTCTGGCACACATCCGCTGCTAGACAAAATGA
GATCCCTGAAGCAATGCATCTGCCAGAAAGTGTCCATTAACACAGGCAATGTACAGAAGCAACCGAAT
GAACACACCACAAGGATCATTTAGCACCATCTCCAAGCATTATGTTCTCAAGGAATTACCACTGAATAT
TTAACTGCCATGCTGCCCTTCCCAGAGGCCAAAAGGCAACCACCAAGGATTTTTGACTTATAAAT
TAACTAAAGCAAAATTGCTTCAAATATGGAATTCCTATAAATCCACACCATTTTCTCCCTTTA
TAAAGACATCATTAAACATGCCCGCTGGACTGTGATTTGGGCTTCTTGAACCTATGTTGTTGGGAAGA



[View online >](#)

ATTTTGTATGCACCATATAACCCAGTCACAAAGGCAATAATGGAAAAGTCCAATGTAACCTCTGAGACAGC
 TGGCGGAATTAAGAGAAAAATCTCAAGAGTGGATGGATAAGTCGCCACTTTTCATGAATTCCTCCATCT
 GTTAAACCAGGCAATTCGAATGCTCCAGAATACTTAAGGAACCCTTTGTGCAAGTTTTGTAAAGTTC
 TCCGTGGGACTCGATGCTGTTGAACTATTGAAACAGATAGATGAAGTTCGATATTCTAAGACTGAAATTAG
 AGAACACATTGACATCATCGATCAGCTTAACACACTATCTTCCCTGACAGTAAATTTCTCTTGTGT
 ATTATATGACCGTATTCAGGCAGCAAAAACCATAGATGAAATGGAGAGAGAGGCTAAAAGGCTCTACAAA
 AGCAACGAACTCTTTGGAAGTGTATTTTTAAGCTTCTTCTAACAGAAGCTGGCACAGAGGCTATGACT
 CTGGAAAATGCTTTCTTCTCCTGTCAAAAATATACCATCCGGATGAGTCTCAAGACCCGACAGACCAC
 AAGAAGCCTAAGAACCAAGATTTGGGCTCCAGGGCCACACAATTCTCCATCACACAACAGATCTATGGC
 AGGGCTTTTATTTATTTACAGGATAGTATTGAAAGAGCAATCATTGAATTGCAAAGTGGAAAGTCCC
 AGGAAATAGCAGTCCAGGTTCAAGCAATTCCTTATCCCTGCTTCATGAAAGACAACCTTCTAACCAGTGT
 CTCTTATCTCTTCCAATTGTGCTTATGGTTGCCTGGGTTGATTTATAGCTGCCTTTGAAAAAGCTT
 GTCTATGAGAAAGACCTCCGGCTCATGAGTACATGAAGATGATGGGTGTAAGTCTGCAGCCATTTCT
 TTGCTGGCTTATAGAGAGTGTGGATTTTACTGGTTACCATCGTGATCCTCATCATTACTCAAGT
 TGGCAATATTCTTCTAAAACAAATGGGTTCAATTTGTTCTGTATTTTTCGGACTACAGCTTCTCGGTT
 ATTGCCATGAGCTATCTTATCAGTGTCTTCTTCAACAACCAACATTGCAGCTCTGATCCGAAGCCTCA
 TCTACATCATTGCCTTCTTCCATTTATTGTTCTGGTTACAGTGGAGAATGAGTTGAGCTATGTATTGAA
 AGTGTTCATGAGCCTGTGTCCCAACAGCATTGAGCTATGCAAGCCAATACATTGCACGATACGAAGAA
 CAGGGCATTGGTCTTCAAGTGGGAAAATATGTACACCTCCCGGTTCCAGGATGACACCACCTCATTGGCT
 GGCTGTGCTGTCTAATCTAGCTGACTCTTTCATTTATTTCTTATTGCTTGGTATGTCAGGAATGTCTT
 CCCAGGGACATACGGTATGGCAGCTCCCTGGTATTTTCCAATTCTTCTTCTTATTGGAAGGAGCGATTT
 GGGTGTGACAGGTTGAAGCCTGAGAAGAGCAATGGCCTCATGTTACTAACATCATGATGCAAGAACCA
 ACCCATCTGCCAGTCTGAATACATGTTTTCTTCAACATCGAGCCTGAACCTAAAGATCTCACAGTCCG
 GGTTGCCCTGCATGGGGTCAAAAAGATCTATGGCTCAAAAAGTTGCTGTTGATAACCTCAATCTGAAC
 TTTATGAAGGGCATATTACTTCAATTGCTGGGGCCCAATGGAGCTGGGAAAACACTACCATTCCATGTTAA
 CTGGGCTGTTGGGGCTCAGCAGGCACCATTTTTGTATATGGAAAAGATATCAAAAACAGACCTACACAC
 GGTACGGAAGAACATGGGAGTCTGTATGCAGCAGCAGCTTGTTCAGTTACCTCACTACTAAGGAGCAC
 CTTCTCTATATGGTCCATCAAAGTTCCTCACTGGACTAAAAAGCAGCTCCACGAGGAAGTAAAAAGGA
 CTTTAAAAGATACTGGACTATATAGCCATCGTCATAAGAGAGTTGGAACACTGTCAGGAGGCATGAAGAG
 GAAGTTATCTATCCATAGCTCTCATTGGTGGATCAAGGGTAGTAATTTTGGATGAACCATCTACTGGA
 GTTGACCCATGTTCTCGCCGAAGTATATGGGATGTTATATCCAAGAACAAAACCTGCCAGAACAATCATT
 TGTCAACGCACCACTTGGACGAGGCTGAAGTGTGAGTGACCCGATCGCCTTCTGGAGCAGGGTGGGCT
 TAGGTGCTGTGGGTCCCATTTTACCTCAAGGAAGCCTTTGGCGATGGGTATCACCTCACGCTTACCAAG
 AAGAAGAGTCAAATTTAAATGCAAATGCAAGTATGTGACACCATGGCCGTGACAGCAATGATCCAATCAC
 ATCTCCCGAAGCCTACCTCAAGGAGGATATGGGGGAGAGCTGTTTATGTAATTCCTCCATTCAGCAC
 CAAAGTCTCAGGGGCTACCTGTCACTCCTACGGGCACTCGACAATGGCATGGGTGACCTCAACATCGGG
 TGCTACGGCATTTCAGATACCACCGTGGAGGAGTCTTCTGAACTTGACCAAAGAGTCACAAAAAATA
 TGCTATGAGTCTTGAGCACTTAACACAAAAGAAAATGGGAATTCGAATGCAATGGCATCTCAACTCC
 TGACGATTTATCTGTGAGCAGCAGCAATTTACAGACAGAGATGACAAAATCCTGACAAGAGGAGAGAGG
 CTGGATGGCTTTGGACTGTTGCTGAAGAAGATCATGGCTATACTCATCAAGAGGTTCCACCACACCCGCA
 GGAAGTGGAAAGGTCTCATTGCTCAGGTTATCCTCCCATCGTCTTTGTTACCACTGCCATGGGCTTGG
 CACACTGAGAAAATCCAGCAACAGTTATCCAGAGATTCAGATCTCCCTCTCTTTATGGTACCTCCGAA
 CAGACAGCCTTCTATGCTAATTATCACCCGAGCAGGAAGCACTTGTCTCAGCAATGTGGGACTTCCCTG
 GAATTGACAACATGTGTCTGAACACCAGTGTCTACAGTGTTTAAACAAAGACAGTCTGGAAAAATGGAA
 CACCAGTGGAGAACCCATCACTAATTTGGTGTGCTCCTGCTCAGAAAATGTCAGGAATGTCCTAAA
 TTTAACTATTCCCACCCGACAGAAAGAACTACTCATCCAGGTAATTTATAACCTCACTGGGCAACGAG
 TGGAAAATATCTTATATCAACTGCAAAATGAGTTGTCCAAAAAGATATGGAGGTTGGAGTTTTGGGCT
 GCCTTTGACAAAAGACCTTCGTTTTGATATAACAGGAGTCCCTGCCAATAGAACACTTGCCAAGGTATGG
 TATGATCCAGAAGGCTATCACTCCCTCCAGCTTACCTCAACAGCCTGAATAATTTCTTCTGCGAGTTA
 ACATGTCAAAAACGATGCTGCCGACATGGCATCATCATGTATAGCCATCCTTATCCAGGAGTGAAGA
 CCAAGAACAAGCCACAATCAGCAGTTTAAATCGATATTTTAGTGGCACTGTCTATCTTGTGGGCTACTCT
 GTCACCACCGCCAGCTTTGTCACCTATGTTGTAAGGGAACATCAAACCAAGCCAAACAGTTGCAGCACA

TTTCAGGCATTGGCGTGACATGCTACTGGGTAACAACTTCATTTATGACATGGTTTTCTACTTGGTGCC
TGTAGCGTTTTCAATTGGTATCATTGCGATTTTCAAATTACCTGCATTCTACAGTGAAAACAACCTAGGC
GCTGTATCTCTCCTACTTCTCCTGTTTGGGATGCAACATTTTCTGGATGTAAGTGGCTGGCTCT
TCCATGAAACAGGAATGGCCTTCATCACTACGTCTGTGTCAACTGTTTTTGGCATTAAATCCATTGT
TTCCCTGTCAGTGGTATACTTTCTTCCAAGGAAAAGCCTAATGATCCGACTTTAGAAGTATTTCTGAA
ACCCTCAAGCGCATTTTCTGATTTTCCACAATTCTGTTTTGGCTACGGTTTGATTGAAGTCTCAAC
AACAGTCGGTCTAGACTTCTAAAAGCATATGGAGTGAATACCCAAATGAAACCTTTGAGATGAATAA
ACTAGGTGCAATGTTTGGCTTTGGTTTTCTCAGGGCACCATGTTTTTCTTGGCAGCTTTAATCAAC
GAATCCCTGATAAAGAACTCAGGCTTTTCTCAGAAAATTTAATTCTTACATGTAAGGGAGACAATAG
ATGAGGATGAAGATGTGCGGGCTGAGAGATTAAGAGTTGAGAGTGGTGCAGCTGAATTTGACTTGGTCCA
ACTTTATTGTCTCACAAAGACCTACCAACTTATCCACAAAAGATTATAGCTGTAACAACATCAGCATT
GGGATACCTGCTGGAGAGTGTGGGCTTCTGGAGTGAATGGAGCAGGAAAGACCACTATATTCAAGA
TGCTGACAGGAGACATCATTCTCAAGTGAAACATTCTGATCAGAAAAGACCGGATCTCTGGGTCA
CGTTGATTCTCACAGCTCATTAGTTGGCTACTGCCTCAGGAAGATGCCTTAGATGACCTGGTAACTGTG
GAAGAACATTTGTATTTCTATGCCAGGGTACATGGAATCCAGAAAAGGATATTAAGAACTGTTTATA
AACTCCTTAGGAGACTTCACCTGATGCCCTTCAAGGACAGAGCTACCTCTATGTGAGTTATGGCAGAAA
AAGAAAATATCCACTGCACTGGCCTTGATAGGAAAACCTTCCATTCTACTGCTGGATGAGCCGAGCTCT
GGCATGGATCCGAAGTCGAAACGGCACCTCTGGAAGATCATTTCAGAAGAAGTACAGAACAATGTTCCG
TCATCCTCACATCTCACAGCATGGAAGAATGTGAAGCTCTCTGTACCAGTTGGCCATTATGGTGAATGG
AAAGTTTCAATGTATTGGATCTTGCAGCACATAAAGAGCAGGTTTGGACGAGGATTTACTGTCAAAGTT
CACTTGAAGAATAACAAAGTGACCATGGAGACCCTCACAAAGTTCATGCAGCTGCACTTTCAAAAAACAT
ACTTAAAAGATCAGCACCTCAGCATGCTAGAGTATCATGTACCAGTACAGCAGGAGGAGTCGAAAACAT
TTTTGATCTGCTGGAAACCAACAAGACTGCTTTAAATATTACAAATTTCTTAGTGAGTCAGACCACTCTG
GAAGAGGTTTTTCATCAACTTTGCCAAAGACCAGAAGTCCATGAAAAGTCTGATACCAGCAGCCAAGGTT
CCACTATAAGTGTGACTCACAAGATGACCAGATGGAGTCT

ACGCGTACGCGGCCGCTCGAG - GFP Tag - GTTTAA

Protein Sequence: >RG218140 representing NM_015657
 Red=Cloning site Green=Tags(s)

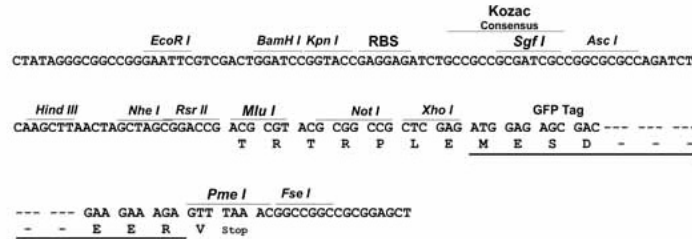
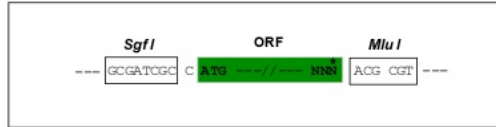
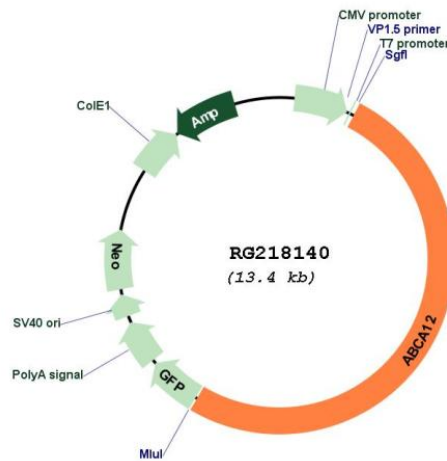
MFTYIKIITSGSDSNITHVWNEDDGQTLSPSSLAQLLILENFEDALLNISANSPYIPYLACVRNVTDSL
 ARGSPENLRLLQSTIRFKKSFLRNGSYEDYFPPVPEVLKSKLSQLRNLTELLCESETFFSLIEKSCQLSDM
 SFGSLCEESEFDLQLLEAAELGTEIAASLLYHDNVISSKKVRDLLTGDPKINLNMDDQFLAQALQMNYLEN
 ITQLIPIIEAMLHVNNSADASEKPGQLLEMFKNVEELKEDLRRTTGMSNRITDKLLAIPIDNRAEIIISQ
 VFWLHSCDTNITPKLEDAMKEFCNLSLERSRQSYLIGLTLHLYLNINFTYKVFVPRKDQKPVKEMME
 LFIRLKEILNQMASGTHPLLDKMRSLKQMHLPKRSVPLTQAMYRSNRMNTPQGSFSTISQALCSQGITTEY
 LTAMPLSSQRPKGNHTKDFLTYKLTKEQIASKYGIPINSTPFCFSLYKDIINMPAGPVIWAFLKPMLLGR
 ILYAPYNPVTKAIMEKSNVTLRQLAELREKSQEWMDKSPFMNSFHLLNQAIPMLQNTLRNPFVQVFVKF
 SVGLDAVELLKQIDELDILRLKLENNIDIIDQLNTLSSLTVNISSCVLYDRIQAAKTIDEMEREAKRLYK
 SNELFSGVIFKLPNRSWHRGYDSGNVFLPPVIKYTIRMSLKAQTTRSLRDKIWAQPHNSPNSHNQIYG
 RAFIYLQDSIERAIIELQTRNSQEIIVQVQAIPYPCFMKDNFLT SVSYSLPIVLMVAWVVFIAAFVKKL
 VYEKDLRLHEYMKMMGVNSCSHFFAWLIESVGFLLVTIVILIIILKFGNLPKTNFGFILFLYFSDYSFSV
 IAMSYLISVFFNNTNIAALIGSLIYIIAFFPFIIVLVTVENELSYLVKVFMSLLSPTAFSYASQYIARIYEE
 QGIGLQWENMYTSPVQDDTTSFGWLCCILADSFYFLIAWYVRNVFPGTYGMAAPWYFPIILPSYWKERF
 GCAEVKPEKSNGLMFTNIMMONTNPSASPEYMFSSNIEPEPKDLTVGVALHGVTIKYGSKVAVDNLNLF
 YEGHITSLGPNAGAKTTTISMLTGLFGASAGTIFVYGGDIKDLHTVVRNMGVCMQHDVLSYLTKEH
 LLLYGSIKVPHWTKKQLHEEVKRTLKDTGLYSHRHKRVGTLGGMKRKLISIALIGGSRVILDEPSTG
 VDPCSRRSIWDVISKNTARTIILSTHHLDEAEVLSDRIFLEQGGRCGSPFYLKEAFGDGYHLTLTK
 KKSPNLNANAVCDTMAVTAMIQSHLPEAYLKEDIGGELVYVLPFSTKVSAGYLSLLRALDNGMGDLNIG
 CYGISDTTVEEVFLNLTKESQKNSAMSLEHLTQKKIGNSNANGISTPDDL SVSSSNFTDRDDKILTRGER
 LDGFGLLLKKIMAILIKRFHHTRRNWKGLIAQVILPIVFVTTAMGLGTLRNSNSYPEIQISPSLYGTSE
 QTAFYANYHPSTEALVSAMWDFPGIDNMCNLSLQCLNKDSLEKWNTSGEPITNFGVCSSENVQECPK
 FNYSPPHRRTYSSQVIYNLTGQRVENYLISTANEFVQKRYGGWSFGLPLTKDLRFDITGVPANRDLAKVW
 YDPEGYHSLPAYLNSLNNFLLRVNMSKYDAARHGIIMYSHYPYGVQDQEATISSLIDILVALSILMGYS
 VTTASFVTVVREHQTKAKQLQHISGIGVTCYWVTNFIYDMVFYLPVAFSIGIIAIFKLPAFYSENNG
 AVSLLLLLFGYATFSWYLLAGLFHETGMAFITVVCVNLFFGINSIVLSVYVFLSKEKPNPTLELISE
 TLKRIFLIFPQFCFGYGLIELSQQQSVLDFLKAYGVEYPNETFEMNKLGMFVALVSQGTMMFFSLRLLIN
 ESLIKKLRLLFRKFNSSHVRETIIDEDVRAERLRVESGAAEFDLVQLYCLTKTYQLIHKKIIAVNNISI
 GIPAGECFGLLGVNGAGKTTIFKMLTGDIIPSSGNILIRNKTGSLGHVDSHSSLVGYCPQEDALDDLVTY
 EEHLFYFARVHGIPEKDIKETVHKLLRRLHLMFPKDRATSMCSYGTKRKLSTALALIGKPSILLDEPSS
 GMDPKSKRHLWKIIEEVQNKCSVILTSHSMEECEALCTRLAIMVNGKFQCIGSLQHIKSRFGRGFTVKV
 HLKNNKVTMETLTKFMQLHFPKTYLKDQHL SMLEYHVPVTTAGGVANIFDLLETNKTALNITNFLVSQTTL
 EEVFINFAKDQKSYETADTSSQGSTISVDSQDDQMES

TRTRPLE - GFP Tag - V

Restriction Sites: Sgfl-MluI

Cloning Scheme:

Cloning sites used for ORF Shutting:


Plasmid Map:

ACCN: NM_015657

ORF Size: 6831 bp

OTI Disclaimer: The molecular sequence of this clone aligns with the gene accession number as a point of reference only. However, individual transcript sequences of the same gene can differ through naturally occurring variations (e.g. polymorphisms), each with its own valid existence. This clone is substantially in agreement with the reference, but a complete review of all prevailing variants is recommended prior to use. [More info](#)

OTI Annotation: This clone was engineered to express the complete ORF with an expression tag. Expression varies depending on the nature of the gene.

Components:	The ORF clone is ion-exchange column purified and shipped in a 2D barcoded Matrix tube containing 10ug of transfection-ready, dried plasmid DNA (reconstitute with 100 ul of water).
Reconstitution Method:	<ol style="list-style-type: none">1. Centrifuge at 5,000xg for 5min.2. Carefully open the tube and add 100ul of sterile water to dissolve the DNA.3. Close the tube and incubate for 10 minutes at room temperature.4. Briefly vortex the tube and then do a quick spin (less than 5000xg) to concentrate the liquid at the bottom.5. Store the suspended plasmid at -20°C. The DNA is stable for at least one year from date of shipping when stored at -20°C.
RefSeq:	<u>NM_015657.3</u> , <u>NP_056472.2</u>
RefSeq Size:	8097 bp
RefSeq ORF:	6834 bp
Locus ID:	26154
UniProt ID:	<u>Q86UK0</u>
Cytogenetics:	2q35
Protein Families:	Druggable Genome, Transmembrane
Protein Pathways:	ABC transporters
Gene Summary:	The membrane-associated protein encoded by this gene is a member of the superfamily of ATP-binding cassette (ABC) transporters. ABC proteins transport various molecules across extra- and intracellular membranes. ABC genes are divided into seven distinct subfamilies (ABC1, MDR/TAP, MRP, ALD, OABP, GCN20, and White). This encoded protein is a member of the ABC1 subfamily, which is the only major ABC subfamily found exclusively in multicellular eukaryotes. Alternative splicing of this gene results in multiple transcript variants. [provided by RefSeq, Jul 2008]