

Product datasheet for **RG218109**

Syntabulin (SYBU) (NM_001099749) Human Tagged ORF Clone

Product data:

Product Type:	Expression Plasmids
Product Name:	Syntabulin (SYBU) (NM_001099749) Human Tagged ORF Clone
Tag:	TurboGFP
Symbol:	SYBU
Synonyms:	GOLSYN; OCSYN; SNPHL
Mammalian Cell Selection:	Neomycin
Vector:	pCMV6-AC-GFP (PS100010)
E. coli Selection:	Ampicillin (100 ug/mL)



[View online »](#)

ORF Nucleotide Sequence:

>RG218109 representing NM_001099749
 Red=Cloning site Blue=ORF Green=Tags(s)

TTTTGTAATACGACTCACTATAGGGCGGCCGGGAATTCGTCGACTGGATCCGGTACCGAGGAGATCTGCC
 GCC**CGGATCGCC**

ATGTTGGTGAAGGAAGCATTAGTCTCTCGATATAAGAAGGAATCAAAGTCAGGCCTTGTGAAACCAG
 GTAGTGAAGCTGATTTTAGCTCCTCGAGCAGCACAGGCAGCATTCCGCTCCTGAGGTCCATATGTCGAC
 TGGCGGAAGCAAGCGGTCTTCTTCTTACGCAATCGAGGTCTCATGGGCGGAGTAATGGAGCTTCGTCA
 CACAAGCCTGGCAGCAGCCCATCATCCCGCGGAAAAGGACCTTCTGTCCATGTGTGCAGGAATCAGC
 TGAGCCCTGTCAATATCCATCCCAGTTATGCACCTTCTCCCAAGCAGTAGCAACTCAGGCTCCTACAA
 AGGAAGCGACTGTAGCCCATCATGAGGCGTCTGGAAGGTACATGTCTTGCGGTGAAAATCATGGTGTC
 AGACCCCAAACCCAGAGCAGTATTTGACTCCACTGCAGCAGAAAGAGGTGACAGTGAGACACCTCAAAA
 CCAAGCTGAAGGAATCTGAGCGCCGACTCCATGAAAGGGAAAGTAAAATCGTGGAGCTTAAGTCCCAGCT
 GGCCCGCATGCGAGAGGACTGGATTGAGGAGGAGTGTACCGGGTAGAGGCCAGTTGGCACTCAAAGAA
 GCCAGGAAAGAGATTAACAGCTCAAACAGGTATCGAAACCATGCGGAGCAGCTTGCGTATAAAGATA
 AAGGCATTGAGAAATATTTGTGGACATAAACATCCAAAACAAGAAGCTGGAGTCTCTCCTTCAGAGCAT
 GGAGATGGCACACAGTGGCTCTCTGAGGGACGAACTGTGCCTAGACTTTCCATGTGATTCCCAGAGAAG
 AGCTTAACCCCAACCCCTCTTGACACAATGGCAGATGGGTTATCTCTGGAAGAGCAGGTACCGGGG
 AAGGGGCTGACAGGGAGCTACTGGTAGGAGATAGCATAGCCAACAGCACAGATTTGTTTCGATGAGATAGT
 GACAGCCACCACAGAATCTGGTGACCTGGAGCTTGTGCATCCACCCCTGGGCTAACGTCTGGAG
 CTGCTGCCCATAGTCATGGGTGAGGAGGAGGCGAGTGTGGTGGTGGAGCGAGCCGTTGAGACCCGCTGG
 TGCCCTACAGCCAGCCATCTCAGAGCTCATTGAGAGTGTGCTGCAGAAGCTCCAGGACCCCTGTCCCTC
 GAGCTTGGCGTCCCTGATGAGTCTGAACCAGACTCGATGGAGAGCTTCCAGAGTCCCTCTCTGCCTTA
 GTGGTTGATTTAACTCCAAGAAATCCAAACTCAGCCATCCTTTTGTCTCCCGTGGAGACCCCTACGCCA
 ATGTGGATGCAGAAGTTCATGCAAACCGCCTCATGAGAGAGCTGGATTTTGCAGCCTGCGTGAAGAGAG
 GTTGGATGGTGCATCCCACTGGCTCGCGGGGCGCTGCTGAGGCAGTACTGGAGCAGCAGCTTCTGGTG
 GATCTCTGGCTGTGGCTGCCCCGTGGTCCCCACGGTCTGTGGGCATTGACTACTCAGAGAGGGGGAA
 CGGATCTGTGTATAACATCGGGGCTTGTCTAGGGGCTGTTGCGTGGTGGCCATTCGCTCCGCC
 CACCGCTTCCGTATCAAACC

ACGCGTACGCGGCCGCTCGAG - GFP Tag - GTTTAA

Protein Sequence:

>RG218109 representing NM_001099749
 Red=Cloning site Green=Tags(s)

MVGEQSIQSSRYKKEKSKGLVKPGSEADFSSSSSTGSI SAPEVHMSTAGSKRSSSSRNRPGRHNSGASS
 HKPGSSPSPREKDLLSMLCRNQLSPVNIHPSYAPSSPSSNSGSYKGSDCSPIMRRSGRYMSCGENHGV
 RPPNPEQYLTPLQKQEVTVRHLKTKLKESEIRLHERESEIVELKSQLARMREDWIEEECHRVEAQLALKE
 ARKEIKQLKQVIETMRSSLADKDKGIQKYFVDINIQNKKLESLLQSMEMAHSGSLRDELCLDFPCDSPEK
 SLTLNPPPLDTMADGLSLEEQVTGEGADRELLVGDSIANSTDLFDEIVTATTTESGDLELVHSTPGANVLE
 LLPIMVGMQEEGSSVVVERAVQTDVVPYSPAI SELIQSVLQKLQDPCPSSLASPDESEPDSMESFPESLSAL
 VVDLTPRNPNSAILLSPVETPYANVDAEVHANRLMRELDFAACVEERLDGVIPLARGGVVRQYWSSSFLV
 DLLAVAAPVVPTVLWAFSTQRGGTDPVYINIGALLRGCCVVALHSLRRTAFRIKT

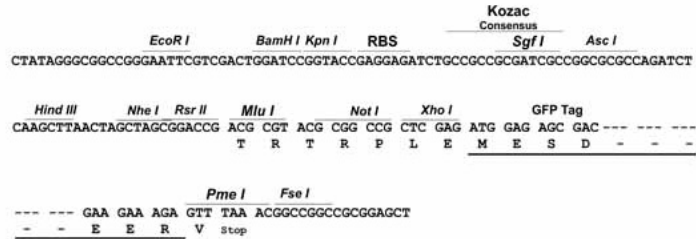
TRTRPLE - GFP Tag - V

Restriction Sites:

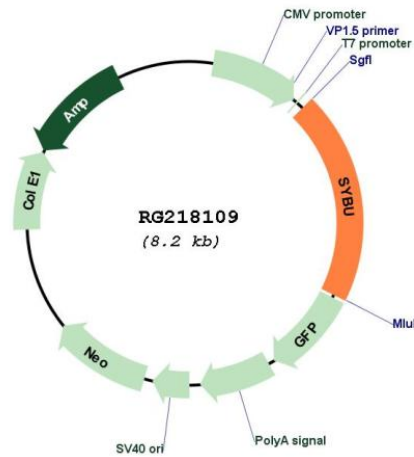
Sgfl-MluI

Cloning Scheme:

Cloning sites used for ORF Shutting:



Plasmid Map:



ACCN:	NM_001099749
ORF Size:	1632 bp
OTI Disclaimer:	The molecular sequence of this clone aligns with the gene accession number as a point of reference only. However, individual transcript sequences of the same gene can differ through naturally occurring variations (e.g. polymorphisms), each with its own valid existence. This clone is substantially in agreement with the reference, but a complete review of all prevailing variants is recommended prior to use. More info
OTI Annotation:	This clone was engineered to express the complete ORF with an expression tag. Expression varies depending on the nature of the gene.
Components:	The ORF clone is ion-exchange column purified and shipped in a 2D barcoded Matrix tube containing 10ug of transfection-ready, dried plasmid DNA (reconstitute with 100 ul of water).
Reconstitution Method:	<ol style="list-style-type: none">1. Centrifuge at 5,000xg for 5min.2. Carefully open the tube and add 100ul of sterile water to dissolve the DNA.3. Close the tube and incubate for 10 minutes at room temperature.4. Briefly vortex the tube and then do a quick spin (less than 5000xg) to concentrate the liquid at the bottom.5. Store the suspended plasmid at -20°C. The DNA is stable for at least one year from date of shipping when stored at -20°C.
RefSeq:	NM_001099749.2
RefSeq Size:	2722 bp
RefSeq ORF:	1635 bp
Locus ID:	55638
UniProt ID:	Q9NX95
Cytogenetics:	8q23.2
Gene Summary:	Syntabulin/GOLSYN is part of a kinesin motor-adaptor complex that is critical for the anterograde axonal transport of active zone components and contributes to activity-dependent presynaptic assembly during neuronal development (Cai et al., 2007 [PubMed 17611281]).[supplied by OMIM, Mar 2008]