

Product datasheet for **RG218052**

ZNF419A (ZNF419) (NM_001098493) Human Tagged ORF Clone

Product data:

Product Type:	Expression Plasmids
Product Name:	ZNF419A (ZNF419) (NM_001098493) Human Tagged ORF Clone
Tag:	TurboGFP
Symbol:	ZNF419
Synonyms:	ZAPHIR; ZNF419A
Mammalian Cell Selection:	Neomycin
Vector:	pCMV6-AC-GFP (PS100010)
E. coli Selection:	Ampicillin (100 ug/mL)



[View online »](#)

ORF Nucleotide Sequence:

>RG218052 ORF sequence, **codon optimized**.
Due to the complexity of NM_001098493, the ORF clone is codon optimized for mammalian Expression.
The nucleotide sequence differs from the reference sequence, yet the amino acid sequence remains identical.

Red=Cloning site Blue=ORF Green=Tags(s)

TTTTGTAATACGACTCACTATAGGGCGCCGGAATTCGTCGACTGGATCCGGTACCGAGGAGATCTGCC
 GCC**CGATCGCC**

ATGGCCGCTGCGGCTCTGAGGGACCTGCCAGGGCTACGTCACCTTTGAGGATGTGGCCGTGATTTTT
 CACAGGAGGAGTGGGACTTCTGGACGATGCCAGAGGCTGCTGTACCGCAACGTCATGCTTAAAACTT
 TACCTTCTTGTAGCCTGGGGCTCGCCAGCTCTAAAACACATGAGATAACTCAGTTGGAATCCTGGGAG
 GAACCTTTATGCCTGCCTGGGAAGTCGTACCTCTGCCATCCCGCGGTTGTTGGCACGGCCCGAGG
 CCGAAGAGGCACCGAAACAGATCGCAAGCGTTGGTCTGCTTAGTTCTAACATCCAGCAGCATCAAAAGCA
 GCATTGCGGAGAGAAGCCTCTGAAGAGGCAGGAAGGCAGAGTGCCAGTGCTTAGAAGCTGCAAGGTGCAT
 TTGTCCGAAAAATCTTTGCAGTCCCGGAAGTGGGGAAGGCCCTTCTCATAAGCAGTGGCGTGCTCAAGC
 ATCAGGTGACCCACACCGGAGAGAAAATCCCATCGGAGCAGAAAATCCAGGGAGGCCTTCCACGCAGGCAA
 GCGGCATTATAAGTGCAGCGAGTGTGGTAAGGCATTCCGGACAGAAGTATCTGCTCGTTCAACATCAGAGA
 CTTACGCCGGGAAGAAGACGTACGAATGTTCCGAGTGTGGCAAATGTTCCGGGACATGCCAATCTTT
 TTATCCATCAAATGTCCATACAGGAGAACGGCCCTATGGCTGTAGTAAGTGTGGAAAATCTTTCTCTAG
 GAACGCTCACCTGATTGAACATCAGCGAGTGCACACCGGGGAGAAAACCATTACCTGCAGTGAATCGCGC
 AAGGCTTTTCAGACACAACAGCACCTTGGTTCAGCACCATAAAGATTCACACTGGGGTTAGGCCCTACGAGT
 GTAGCGAGTGCAGTAAGCTGTTCAGCTTCAATAGCAGCCTCATGAAACATCAGCGCATCCATACTGGCGA
 AAGACCTACAAATGCTCCGAGTGTGGAAAATTTATAGCCACAAATCTAACCTCATCAAGCATTGGCGC
 GTACATACCGGCGAAAGGCCCTACAAGTGTAGCGACTGCGGTAATTTTTACACAGTGTTCATCCCTTA
 TGCAGCATCAGAAGTTCACACGGGTGAAAAGCCTTTCAAATGCAATGAGTGCGGGAGATTCTTCAGAGA
 AAATCCACGCTTGTTCGACACCAGAGAGTGCATACAGGGGCAAAGCCCTACGAGTGCCGGGAGTGCAGG
 AAGTTTTCTCCAATCCTCTACGCTGATGCAGCACAGGAAGGTACACATCGCGGAGAAGCCCTTCAAAT
 GCAATGAATGCGGTAGGCTTTTCAGAGAGAATAGCTCACTGGTGAACACCAGCGCTGCACACCGGGGC
 TAAGCCTTACGAGTGCCGGGAGTGTGGTAAGTCTTTCGCATAATAGCTCACTGTTCAAGCACCGACGC
 ATACACACGGGTGAGATGCAG

ACGCGTACGCGGCCGCTCGAG – GFP Tag – GTTTAA

Protein Sequence:

>RG218052 representing NM_001098493
 Red=Cloning site Green=Tags(s)

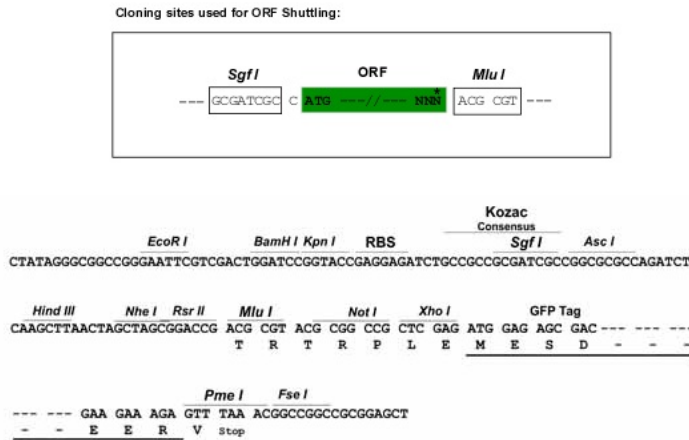
MAAAALRDPAQGYVTFEDVAVYFSQEEWRLDDAQRLLYRNVMLNFTLLASLGLASSKTHEITQLESWE
 EPFMPAWEVVTSAIPRCWHGAEAEAEPEQIASVGLLSSNIQQHQKQHCGEKPLKRQEGRPVLRCKVH
 LSEKSLQSREVGKALLISSGLKHQVHTGKSHRSSKSREAFHAGKRHYKCSECGKAFGQKYLQVHQ
 LHAGKTYECSECGKLFDRMSNLFHQIIVHTGERPYGCSNCGKFSRHAHLIEHQVHTGKPFCTSECG
 KAFRHNSLTVQHHKIHTGVRPYECSECGKLFNFSSLMKHQRIHTGERPYKCSECGKFYSHKSNLIKHW
 VHTGERPYKSDCGKFFTCSSLMQHQKQVHTGKPFKCNCGRFFRENSTLVRHQVHTGAKPYECRECG
 KFFSQSSTLMQHRKVHIGKPFKCNCGRFLRENSSLVKHQVHTGAKPYECRECGKFFRHNSLKFHRR
 IHTGEMQ

TRTRPLE – GFP Tag – V

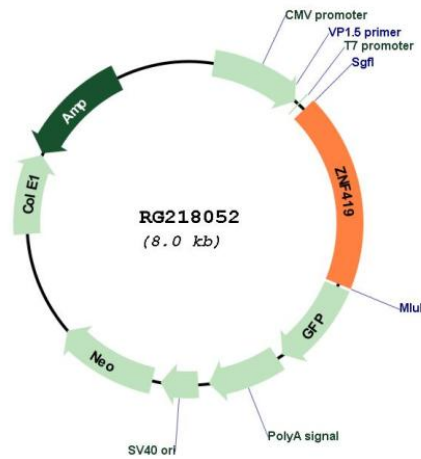
Restriction Sites:

SgfI-MluI

Cloning Scheme:



Plasmid Map:



ACCN: NM_001098493
 ORF Size: 1491 bp

OTI Disclaimer:	The molecular sequence of this clone aligns with the gene accession number as a point of reference only. However, individual transcript sequences of the same gene can differ through naturally occurring variations (e.g. polymorphisms), each with its own valid existence. This clone is substantially in agreement with the reference, but a complete review of all prevailing variants is recommended prior to use. More info
OTI Annotation:	This clone was engineered to express the complete ORF with an expression tag. Expression varies depending on the nature of the gene.
Components:	The ORF clone is ion-exchange column purified and shipped in a 2D barcoded Matrix tube containing 10ug of transfection-ready, dried plasmid DNA (reconstitute with 100 ul of water).
Reconstitution Method:	<ol style="list-style-type: none"> 1. Centrifuge at 5,000xg for 5min. 2. Carefully open the tube and add 100ul of sterile water to dissolve the DNA. 3. Close the tube and incubate for 10 minutes at room temperature. 4. Briefly vortex the tube and then do a quick spin (less than 5000xg) to concentrate the liquid at the bottom. 5. Store the suspended plasmid at -20°C. The DNA is stable for at least one year from date of shipping when stored at -20°C.
RefSeq:	NM_001098493.1 , NP_001091963.1
RefSeq Size:	2342 bp
RefSeq ORF:	1494 bp
Locus ID:	79744
UniProt ID:	Q96HQ0
Cytogenetics:	19q13.43
Protein Families:	Transcription Factors
Gene Summary:	May be involved in transcriptional regulation.[UniProtKB/Swiss-Prot Function]