

Product datasheet for **RG218045**

Syntabulin (SYBU) (NM_001099747) Human Tagged ORF Clone

Product data:

Product Type:	Expression Plasmids
Product Name:	Syntabulin (SYBU) (NM_001099747) Human Tagged ORF Clone
Tag:	TurboGFP
Symbol:	SYBU
Synonyms:	GOLSYN; OCSYN; SNPHL
Mammalian Cell Selection:	Neomycin
Vector:	pCMV6-AC-GFP (PS100010)
E. coli Selection:	Ampicillin (100 ug/mL)



[View online »](#)

ORF Nucleotide
Sequence:

>RG218045 representing NM_001099747
Red=Cloning site Blue=ORF Green=Tags(s)

TTTTGTAATACGACTCACTATAGGGCGGCCGGGAATTCGTCGACTGGATCCGGTACCGAGGAGATCTGCC
GCCGCGATCGCC

ATGGGGCCCTCCGCGAGAGCAAGGAGCACAGAGTGCAGCATCATGACAAGGAGATTTCTCGAAGCCGAA
TTCCCCGTTGATTCTTCGGCCCATATGCCCAACAACAGCACAAAGTGTCCCCAGCCTCTGAGTCTCC
TTTCTCTGAGGAAGAGAGCAGAGAGTTCAACCCAGCAGCTCTGGGCGCTCAGCGAGGACCGTTAGCAGC
AACAGTCTCTGCTCAGATGACACAGGCTGTCTAGCAGCCAGTCAGTGTCTCTGTGAAGACACCCTCAG
ATGCTGGAACAGCCCCATTGGCTTTTGCCTGGAAGTATGAAGGCTTACCAGAAAGAAATGCACGAT
TGGAAATGGTTGGTGAAGGAAGCATTTCAGTCTCTCGATATAAGAAGGAATCAAAGTCAGGCTTGTGAAA
CCAGGTAGTGAAGCTGATTTTAGTCTCTGAGCAGCACAGGCAGCATTTCGCTCCTGAGGTCCATATGT
CGACTGCGGGAAGCAAGCGGTCTTCTTTCACGCAATCGAGTCTCATGGGCGGAGTAATGGAGCTTC
GTCACACAAGCCTGGCAGCAGCCATCATCCCCGGGAAAAGGACCTTCTGTCCATGCTGTGCAGGAAT
CAGCTGAGCCCTGCAATATCCATCCCAGTTATGCACCTTCTTCCCAAGCAGTAGCAACTCAGGCTCCT
ACAAAGGAAGCGACTGTAGCCCCATCATGAGGCTTCTGGAAGGTACATGTCTTGCGGTGAAAATCATGG
TGTGACACCCCAAAACCAGAGCAGTATTTGACTCCACTGCAGCAGAAAGAGGTGACAGTGAACACCTC
AAAACCAAGTGAAGGAATCTGAGCGCCGACTCCATGAAAGGGAAAGTGAATCGTGGAGCTTAAGTCCC
AGCTGGCCCGCATGCGAGAGGACTGGATTGAGGAGGAGTGTACCCGGGTAGAGGCCAGTTGGCACTCAA
AGAAGCCAGGAAAGAGATTAACAGCTCAAACAGTTCATCGAAACCATGCGGAGCAGCTTGGCTGATAAA
GATAAAGGCATTCAGAAATATTTTGTGGACATAAACATCCAAAACAAGAAGCTGGAGTCTCTCCTCAGA
GCATGGAGATGGCACACAGTGGCTCTCTGAGGGACGAACTGTGCCTAGACTTTCCATGTGATTTCCCA
GAAGAGCTTAACCCTCAACCCCTCTTGACACAATGGCAGATGGGTTATCTCTGGAAGAGCAGGTCACG
GGGAAGGGGCTGACAGGGAGCTACTGGTAGGAGATAGCATAGCCAACAGCACAGATTTGTTGATGAGA
TAGTGACAGCCACCACAGAACTCTGGTGACCTGGAGCTTGTGCATTCCACCCCTGGGGCTAACGTCTC
GGAGCTGCTGCCATAGTCATGGGTGAGGAGGGCAGTGTGGTGGTGGAGCGAGCCGTTAGAGCCGAC
GTGGTGCCTACAGCCAGCCATCTCAGAGCTCATTAGAGTGTGCTGCAGAAGTCCAGGACCCCTGTC
CCTCGAGCTTGGCGTCCCCTGATGAGTCTGAACCAGACTCGATGGAGAGCTTCCAGAGTCCCTCTGTC
CTTAGTGGTTGATTTAACTCAAAGAAATCAAACCTCAGCCATCCTTTTGTCTCCCGTGGAGACCCCTAC
GCCAATGTGGATGCAGAAGTTCATGCAAACCGCTCATGAGAGAGCTGGATTTTGCAGCCTGCGTGAAG
AGAGGTTGGATGGTGTATCCCACTGGCTCGCGGGGGCGTGTGAGGAGTACTGGAGCAGCAGCTTCTC
GGTGGATCTCCTGGCTGTGGCTGCCCGTGGTCCCCACGGTTCTGTGGCATTAGTACTCAGAGAGGG
GGAACGGATCCTGTGTATAACATCGGGGCTTGTCTAGGGGCTGTGCGTGGTGGCTGCATTGCTCC
GCCGACCCGCTTCCGTATCAAACC

ACGCGTACGCGGCCGCTCGAG - GFP Tag - GTTTAA

Protein Sequence: >RG218045 representing NM_001099747
 Red=Cloning site Green=Tags(s)

MGPLRESKEHRVQHDKEISRSRIPRLILRPHMPQQQHKVSPASESPFSEESREFNPSSSGRSARTVSS
 NSFCSDDTGPCSSQSVSPVKTPSDAGNSPIGFCPGSDEGFTRKCTIGMVGEGSIQSSRYKESKSLVK
 PGSEADFSSSSSTGSI SAPEVHMSTAGSKRSSSSRNRRGPHGRSNGASSHKPGSSPSSPREKDLLSMLCRN
 QLSPVNIHPSYAPSSPSSNSGSYKGSDCSPIMRRSGRYMSCGENHGVRPPNPEQYLTPLQQKEVTVRHL
 KTKLKESERRLHERESEIVELKSQLARMREDWIEEECHRVEAQLALKEARKEIKQLKQVIETMRSSLADK
 DKGIQKYFVDINIQNKKLESLLQSMEMAHSGSLRDELCLDFPCDSPEKSLTLNPPLDTMADGLSLEEQVT
 GEGADRELLVGDSIANSTDLFDEIVTATTTESGDLELVHSTPGANVLELLPIVMGQEEGVSVVVERAVQTD
 VVPYSPAISELIQSVLQKLQDPCPSSLASPDESEPDSMESFPESLSALVVDLTPRNPNSAILLSPVETPY
 ANVDAEVHANRLMRELDFAACVEERLDGVIPLARGGVVRQYWSSSFLVDLLAVAAPVVPTVLWAFSTQRG
 GTDPVYINIGALLRGCCVVALHSLRRTAFRIKT

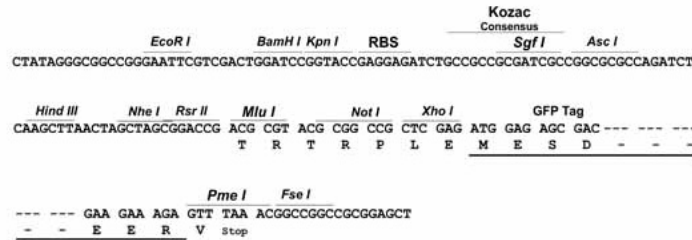
TRTRPLE - GFP Tag - V

Restriction Sites:

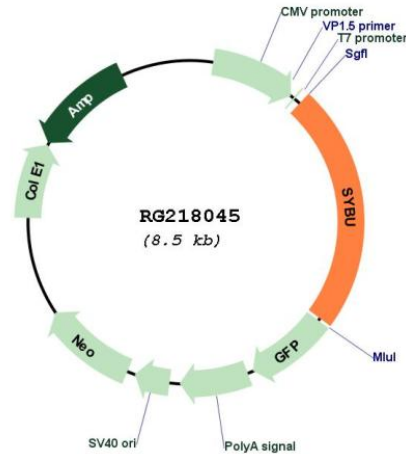
Sgfl-Mlul

Cloning Scheme:

Cloning sites used for ORF Shuttling:



Plasmid Map:



ACCN: NM_001099747

ORF Size: 1986 bp

OTI Disclaimer: The molecular sequence of this clone aligns with the gene accession number as a point of reference only. However, individual transcript sequences of the same gene can differ through naturally occurring variations (e.g. polymorphisms), each with its own valid existence. This clone is substantially in agreement with the reference, but a complete review of all prevailing variants is recommended prior to use. [More info](#)

OTI Annotation: This clone was engineered to express the complete ORF with an expression tag. Expression varies depending on the nature of the gene.

Components: The ORF clone is ion-exchange column purified and shipped in a 2D barcoded Matrix tube containing 10ug of transfection-ready, dried plasmid DNA (reconstitute with 100 ul of water).

Reconstitution Method:

1. Centrifuge at 5,000xg for 5min.
2. Carefully open the tube and add 100ul of sterile water to dissolve the DNA.
3. Close the tube and incubate for 10 minutes at room temperature.
4. Briefly vortex the tube and then do a quick spin (less than 5000xg) to concentrate the liquid at the bottom.
5. Store the suspended plasmid at -20°C. The DNA is stable for at least one year from date of shipping when stored at -20°C.

RefSeq: [NM_001099747.2](#)

RefSeq Size: 3005 bp

RefSeq ORF: 1989 bp

Locus ID: 55638

UniProt ID: [Q9NX95](#)

Cytogenetics: 8q23.2

Gene Summary: Syntabulin/GOLSYN is part of a kinesin motor-adaptor complex that is critical for the anterograde axonal transport of active zone components and contributes to activity-dependent presynaptic assembly during neuronal development (Cai et al., 2007 [PubMed 17611281]).[supplied by OMIM, Mar 2008]