

Product datasheet for **RG218041**

Collagen II (COL2A1) (NM_001844) Human Tagged ORF Clone

Product data:

Product Type:	Expression Plasmids
Product Name:	Collagen II (COL2A1) (NM_001844) Human Tagged ORF Clone
Tag:	TurboGFP
Symbol:	COL2A1
Synonyms:	ANFH; AOM; COL11A3; SEDC; STL1
Mammalian Cell Selection:	Neomycin
Vector:	pCMV6-AC-GFP (PS100010)
E. coli Selection:	Ampicillin (100 ug/mL)
ORF Nucleotide Sequence:	>RG218041 representing NM_001844 Red=Cloning site Blue=ORF Green=Tags(s)

TTTTGTAATACGACTCACTATAGGGCGGCCGGAATTCGTCGACTGGATCCGGTACCGAGGAGATCTGCCGCC**CGATCGCC**

ATGATTCGCCCTCGGGGCTCCCCAGTCGCTGGTGTCTGACGCTGCTCGTCGCCGCTGTCCTTCGGTGTC
AGGGCCAGGATGTCCAGGAGGCTGGCAGCTGTGTGCAGGATGGGCAGAGGTATAATGATAAGGATGTGTG
GAAGCCGAGCCCTGCCGATCTGTGTCTGTGACACTGGGACTGTCCTCTGCGACGACATAATCTGTGAA
GACGTGAAAGACTGCCTCAGCCCTGAGATCCCCCTCGGAGAGTGTGCCCATCTGCCAACTGACCTCG
CCACTGCCAGTGGCAACCAGGACCAAAGGGACAGAAAGGAGAACCTGGAGACATCAAGGATATTGTAGG
ACCCAAAGGACCTCCTGGGCCTCAGGGACTGCAGGGGAACAAGGACCCAGAGGGGATCGTGGTGACAAA
GGTGAAAAGGTGCCCTGGACCTCGTGGCAGAGATGGAGAACCTGGGACCCCTGGAAATCCTGGCCCC
CTGGTCTCCCCGGCCCCCTGGTCCCCCTGGTCTTGGTGGAACTTTGCTGCCAGATGGCTGGAGGATT
TGATGAAAAGGCTGGTGGCGCCAGTTGGGAGTAATGCAAGGACCAATGGGCCCATGGGACCTCGAGGA
CCTCCAGGCCCTGCAGGTGCTCCTGGGCCTCAAGGATTCAAGGCAATCCTGGTGAACCTGGTGAACCTG
GTGTCTCTGGTCCCATGGGTCCCCGTGGTCTCCTGGTCCCCCTGGAAAGCCTGGTATGATGGTGAAGC
TGGAAAACCTGGAAAAGCTGGTAAAAGGGTCCGCCTGGTCTCAGGGTGTCTCGTGGTTTCCAGGAACC
CCAGGCCCTCCTGGTGTCAAAGGTACAGAGGTTATCCAGCGCTGGACGGTGCTAAGGGAGAGCGGGTG
CTCCTGGTGTGAAGGGTGAAGTGGTTCCCCGGGTGAGAACGGATCTCCGGGCCCAATGGGTCTCGTGG
CCTGCCTGGTGAAGAGGACGGACTGGCCCTGCTGGCGCTGCGGGTGCCCCAGGCAACGATGGTACGCCA
GGCCCCGAGGTCTCCGGTCTGTGGTCTGCTGGTGGTCTGGCTTCCCTGGTGTCTCTGGAGCCA
AGGGTGAAGCCGGCCCCACTGGTGGCCGTGGTCTGAAGGTGCTCAAGGTCTCGCGGTGAACCTGGTAC
TCTGGTCCCCCTGGGCCTGCTGGTGCCTCCGGTAACCTGGAACAGATGGAATTCCTGGAGCCAAAGGA
TCTGTGGTGTCTCTGGCATTGCTGGTGTCTGGCTTCCCTGGGCCACGGGGTCTCTGGCCCTCAAG
GTGCAACTGGTCTCTGGGCCGAAAGGTGAGACGGGTGAACCTGGTATTGCTGGCTTCAAAGGTGAACA
AGGCCCAAGGGAGAACCTGGCCCTGCTGGCCCCAGGGAGCCCTGGACCCGCTGGTGAAGAAGGCAAG



[View online >](#)

AGAGGTGCCCGTGGAGAGCCTGGTGGCGTTGGGCCCATCGGTCCCCCTGGAGAAAGAGGTGCTCCCGGAA
ACCGCGTTTTCCAGGTCAAGATGGTCTGGCAGGTCCCAAGGGAGCCCCTGGAGAGCGAGGGCCAGTGG
TCTTGCTGGCCCCAAGGGAGCCAACGGTGACCTGGCCGTCTGGAGAACCTGGCCTTCTGGAGCCCGG
GGTCTACTGGCCGCCCTGGTGTGCTGGTCTCAAGGCAAAGTTGGCCCTTCTGGAGCCCTGGTGAAG
ATGGTCGTCTGGACCTCCAGGTCTCAGGGGGCTCGTGGGCAGCCTGGTGTATGGGTTTCCCTGGCCC
CAAAGTGGCAAACGGTGAGCCTGGCAAAGCTGGTGAGAAGGACTGCCTGGTCTCTGGTGAACGAG
CTTCTGGCAAAGATGGTGAGACAGGTGCTGCAGGACCCCTGGCCCTGCTGGACCTGGAGAACGAG
GCGAGCAGGGTGTCTGGGCCATCTGGGTTCCAGGGACTTCTGGCCCTCTGGTCCCCAGGTGAAGG
TGGAAAACCAGGTGACCAGGGTGTCCCGGTGAAGCTGGAGCCCTGGCCTCGTGGGTCCAGGGGTGAA
CGAGGTTTCCAGGTGAACGTGGCTCTCCCGGTGCCAGGGCCTCCAGGGTCCCCGTGGCCTCCCGGCA
CTCCTGGCACTGATGGTCCCAAAGGTGCATCTGGCCAGCAGGCCCCCTGGCGCACAGGGCCCTCAGG
TCTTCAGGAATGCCTGGCGAGAGGGGAGCAGTGGTATCGTGGGCCAAAGGCGACAGGGGTGACGTT
GGTGAGAAAGGCCCTGAGGGAGCCCTGGAAAGGATGGTGGACGAGGCCTGACAGTCCCATTGGCCCC
CTGGCCAGCTGGTGTAAACGGCGAGAAGGGAGAAGTTGGACCTCTGGTCTGCAGGAAGTGTGGTGC
TCGTGGCGCTCCGGGTGAACGTGGAGAGACTGGCCCCCGGACCAGCGGATTTGCTGGCCCTCTGGT
GCTGATGGCCAGCCTGGGGCCAAGGGTGAAGCAAGGAGAGGCCGGCCAGAAAGGCGATGCTGGTGCCTG
GTCCTCAGGGCCCTCTGGAGCACCTGGCCCTCAGGGTCTACTGGAGTACTGGTCTAAAGGAGCCCG
AGGTGCCCAAGGCCCCCGGGAGCCACTGGATTCCCTGGAGTGTGGCCGCGTTGGACCCCAAGCTCC
AATGGCAACCCTGGACCCCTGGTCCCCCTGGTCTTCTGGAAAAGATGGTCCCAAAGGTGCTCGAGGAG
ACAGCGGCCCCCTGGCCGAGCTGGTGAACCCGGCCTCCAAGGTCTGCTGGACCCCTGGCGAGAAGGG
AGAGCCTGGAGATGACGGTCCCTCTGGTCCGAAGGTCCACCAGGTCCCCAGGGTCTGGCTGGTCAAGA
GGCATCGTCCGTCTGCTGGGCAACGTGGTGGAGAGGATTCCCTGGCTGCCTGGCCCATCGGGTGAGC
CCGGCAAGCAGGGTGTCTCTGGAGCATCTGGAGACAGAGGTCTCTGGCCCGTGGGTCTCTGGCCT
GACGGGTCTGCAGGTGAACCCGGACGAGAGGGAAAGCCCGGTGCTGATGGCCCCCTGGCAGAGATGGC
GCTGCTGGAGTCAAGGGTATCGTGGTGGAGTGGTGTGGGAGCTCTGGAGCCCTGGGCCCCCTG
GCTCCCCCTGGCCCGCTGGTCCAAGTGGCAAGCAAGGAGACAGAGGAGAAGCTGGTGCACAAGGCCCAT
GGGACCCCTCAGGACCAGCTGGAGCCCGGGGAATCCAGGGTCTCAAGGCCCCAGAGGTGACAAAGGAGAG
GCTGGAGAGCCTGGCGAGAGAGGCTGAAGGGACACCGTGGCTTCACTGGTCTGCAGGGTCTGCCGGCC
CTCCTGGTCTTCTGGAGACCAAGGTGCTTCTGGTCTGCTGGTCTTCTGGCCCTAGAGGTCTCTGG
CCCCGTGGTCCCTCTGGCAAAGATGGTGTAAATGGAATCCCTGGCCCATTTGGGCTCTGGTCCCCGT
GGACGATCAGGCGAAACCGGTCTGCTGGTCTCTGGAATCCTGGGCCCTGGTCTCCAGGTCCCC
CTGGCCCTGGCATCGACATGTCCGCCTTCTGGCTTAGGCCCGAGAGAGAAGGGCCCGACCCCTGCA
GTACATGCGGGCCGACCAGGCAGCCGGTGGCCTGAGACAGCATGACGCCGAGGTGGATGCCACACTCAAG
TCCCTCAACAACCAGATTGAGAGCATCCGACGCCCGAGGGCTCCCGCAAGAACCCTGCTCGCACCTGCA
GAGACCTGAAACTCTGCCACCCTGAGTGGAAAGAGTGGAGACTACTGGATTGACCCCAACCAAGGTGCAC
CTTGGACGCCATGAAGGTTTTCTGCAACATGGAGACTGGCGAGACTTGGCTTACCCCAATCCAGCAAAC
GTTCCCAAGAAGAAGTGGTGGAGCAGCAAGAGCAAGGAGAAGAAACACATCTGGTTTGGAGAAACCATCA
ATGGTGGCTTCCATTTACGCTATGGAGATGACAATCTGGCTCCCAACACTGCCAACGTCCAGATGACCTT
CCTACGCTGTGTCCACGGAAGGCTCCAGAACATCACCTACCACTGCAAGAACAGCATTGCCTATCTG
GACGAAGCAGCTGGCAACCTCAAGAAGGCCCTGCTCATCCAGGGTCCAATGACGTGGAGATCCGGGCGAG
AGGGCAATAGCAGGTTACGTACTGCTGAGGATGGCTGCACGAAACATACCGGTAAGTGGGGCAA
GACTGTTATCGAGTACCGGTACAGAGACCTCACGCCTCCCATCATTGACATTGCACCCATGGACATA
GGAGGGCCCGAGCAGGAATTCGGTGTGGACATAGGGCCGGTCTGCTTCTTG

ACGCGTACGCGGCCGCTCGAG - GFP Tag - GTTTAA

Protein Sequence: >RG218041 representing NM_001844
 Red=Cloning site Green=Tags(s)

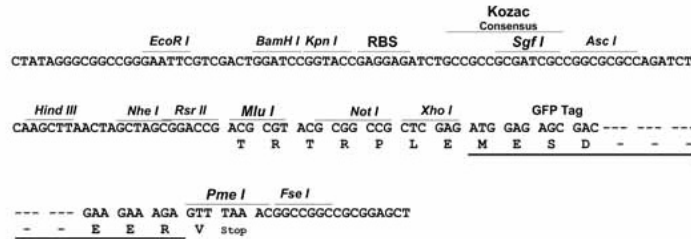
MIRLGAPQSLVLLTLLVAAVLRCQGQDVQEAAGSCVQDQQRYNKDVWKPEPCRICVCDTGTVLCDIIICE
 DVKDCLSPEIPFGECCPICPTDLATASGQPGPKGQKGEPPGDIKDIVGPKGPPGPPQPAGEQGRGDRGDK
 GEKGAGPRGRDGEPTGNPGPPGPPGPPGLGGNFAAQMAGGFDEKAGGAQLGVMQGMGPMGPRG
 PPGPAGAPGPPQGFQGNPGEPEPVSQPMGPRGPPGPPGKPGDDGEAGKPKGKAGERGPPGQARGFPPT
 PGLPGVKGHRGYPGLDGAKGEAGAPGVKGESGSPGENSGPMGPRGLPGERGRTGPAGAAGARGNDGQP
 GPAGPPGVPAGGPGFPGAPGAKGEAGPTGARGPEGAQGRGEPGTPGSPGAPAGSGNPGTDGIPGAKG
 SAGAPGIAGAPGFPGRGPPGQATGPLGPKQGTGEPGIAGFKGEQGPKEGPPAGPQAGPPAGEEGK
 RGARGEPGGVPIGPPGERGAPGNRFGPDGLAGPKGAPGERGSLAGPKGANGDPGRGEPGLPGAR
 GLTGRPGDAGPQKVGPSGAPGEDGRGPPGQARGQPMGFPGPKGANGEPGKAGEKGLPGAPLGRG
 LPGKDGTEGAAGPPGAPAGERGEQGAPGSGFQGLPGPPGPPGEGKPGDQGVPEAGAPLVGPRGE
 RGFPGERGSPGAQLQGPRGLPGTPTDGPKGASGPAGPPGAQGPPLQGMPGERGAAGIAGPKGDRGDV
 GEKGPAGPKDGGRLTGPVIGPPGAPANGEKGEVGGPPGAGSAGARGAPGERGETGPPGAPGAGPPG
 ADGQPGAKGEQGEAGQKGDAGAPGQGGAPGQGTGVTGPKGARGAQPAGTGFPGAAGRVPGPS
 NGNPGPPGPPGSGKDGPKGARGDSGPPGRAGEPGLQGPAGPPGKGEPPGDDGSPGAEPPGPPQGLAQGR
 GIIVLPGQRGERGFPGLPGSGEPKQAGPAGSADRGPVGGPPGLTGPAGEPREGSPGADGPPGRDG
 AAGVKGDRGETGAVGAPGAPGPPGSPGAGTGTGKQDRGEAGAQPMPGSPGARGIQQGPGRGDKGE
 AGEPPERGLKHRGFTGLQGLPGPPGSPGQDQASGPAGPSGPRGPPGPPVPSGKDGANGIPGPIGPPGR
 GRSGETGAPGPPGNPGGPPGPPGPGIDMSAFAGLGPREGKDPDLYMRADQAAGLRQHDAEVDATLK
 SLNNQIESIRSPESRKNPARTCRDLKCHPEWKSVDYWDPNQCTLDAMKVFCNMETGETCVYYPNAN
 VPKKNWSSKSKKHIWFGETINGGFHF SYGDDNLAPNTANVQMTFLRLLLSTEGSQNITYHCKNSIAYL
 DEAAGNLKALLIQGSNDVEIRAEGNSRFYTTALKDGCCTKHTGKWKTVIEYRSQKTSRLPIIDIAPMDI
 GGPEQEFVGDIGPVCFLL

TRTRPLE - GFP Tag - V

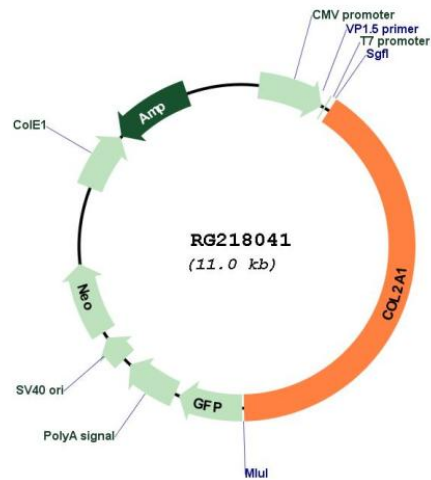
Restriction Sites: SgfI-MluI

Cloning Scheme:

Cloning sites used for ORF Shutting:



Plasmid Map:



ACCN: NM_001844

ORF Size: 4461 bp

OTI Disclaimer: Due to the inherent nature of this plasmid, standard methods to replicate additional amounts of DNA in *E. coli* are highly likely to result in mutations and/or rearrangements. Therefore, OriGene does not guarantee the capability to replicate this plasmid DNA. Additional amounts of DNA can be purchased from OriGene with batch-specific, full-sequence verification at a reduced cost. Please contact our customer care team at custsupport@origene.com or by calling 301.340.3188 option 3 for pricing and delivery.

The molecular sequence of this clone aligns with the gene accession number as a point of reference only. However, individual transcript sequences of the same gene can differ through naturally occurring variations (e.g. polymorphisms), each with its own valid existence. This clone is substantially in agreement with the reference, but a complete review of all prevailing variants is recommended prior to use. [More info](#)

OTI Annotation: This clone was engineered to express the complete ORF with an expression tag. Expression varies depending on the nature of the gene.

Components:	The ORF clone is ion-exchange column purified and shipped in a 2D barcoded Matrix tube containing 10ug of transfection-ready, dried plasmid DNA (reconstitute with 100 ul of water).
Reconstitution Method:	<ol style="list-style-type: none">1. Centrifuge at 5,000xg for 5min.2. Carefully open the tube and add 100ul of sterile water to dissolve the DNA.3. Close the tube and incubate for 10 minutes at room temperature.4. Briefly vortex the tube and then do a quick spin (less than 5000xg) to concentrate the liquid at the bottom.5. Store the suspended plasmid at -20°C. The DNA is stable for at least one year from date of shipping when stored at -20°C.
RefSeq:	<u>NM_001844.3</u> , <u>NP_001835.2</u>
RefSeq Size:	5060 bp
RefSeq ORF:	4464 bp
Locus ID:	1280
UniProt ID:	<u>P02458</u>
Cytogenetics:	12q13.11
Protein Pathways:	ECM-receptor interaction, Focal adhesion
Gene Summary:	This gene encodes the alpha-1 chain of type II collagen, a fibrillar collagen found in cartilage and the vitreous humor of the eye. Mutations in this gene are associated with achondrogenesis, chondrodysplasia, early onset familial osteoarthritis, SED congenita, Langer-Saldino achondrogenesis, Kniest dysplasia, Stickler syndrome type I, and spondyloepimetaphyseal dysplasia Strudwick type. In addition, defects in processing chondrocalcin, a calcium binding protein that is the C-propeptide of this collagen molecule, are also associated with chondrodysplasia. There are two transcripts identified for this gene. [provided by RefSeq, Jul 2008]