

## Product datasheet for **RG218033**

### PLCXD2 (NM\_153268) Human Tagged ORF Clone

#### Product data:

Product Type:	Expression Plasmids
Product Name:	PLCXD2 (NM_153268) Human Tagged ORF Clone
Tag:	TurboGFP
Symbol:	PLCXD2
Mammalian Cell Selection:	Neomycin
Vector:	pCMV6-AC-GFP (PS100010)
E. coli Selection:	Ampicillin (100 ug/mL)
ORF Nucleotide Sequence:	>RG218033 representing NM_153268 Red=Cloning site Blue=ORF Green=Tags(s)

TTTTGTAATACGACTCACTATAGGGCGGCCGGAATTCGTCGACTGGATCCGGTACCGAGGAGATCTGCC  
GCC**CGATCGCC**

ATGCTAGCAGTTAGGAAGGCCAGGAGGAACTCAGGATGGGGACCATCTGCTCCCCAACCCAGCGGGA  
CAAAGACATCATCGGAGGTCTGCAATGCCGACTGGATGGCCTCGCTCCCCCTCACCTCCACAACCTCCC  
CCTTTCCAATCTGGCAATCCCAGGCTCACATGATTCATTACGCTACTGGGTGGATGAAAAGTCCCCAGTG  
GGCCTGACCAAACCCAAGCTATCAAACGCCTCGCCAGGATCTCCTTGGTGAAGAAGCTAATGAAGAAGT  
GGTCTGTGACTCAGAACCTGACATTTGAGAACAGCTGGAAGCTGGGATCCGCTACTTTGACCTGCGTGT  
GTCTTCAAACACAGGGGATGCCGACCAGGAGATCTACTTCATCCATGGGCTTTTTGGCATCAAGGTCTGG  
GATGGGCTGATGGAAATTGACTCGTTTCTTACACAGCACCCCCAGGAGATTATCTTCTGATTTCAACC  
ACTTCTATGCCATGGATGAGACCCATCACAAATGCCTGGTTCTGCGGATCCAGGAGGCCTTTGGAAACAA  
GCTGTGCCCAGCCTGCAGTGTGGAAAGTTTACGCTGCGAACTCTGTGGGAGAAGAAGTCCAGGTTCTT  
ATTTTCTACCACTGTCCCTTCTACAAGCAGTACCCCTTCTGTGGCCAGGAAAGAAGATTCCAGCGCCCT  
GGGCAAACACCACAAGTGTGCGAACTAATCCTCTTCTGGAGACCACTCTGAGTGAGCGGGCCTCAG  
GGGCTCCTTCATGTCTCCAAGCGATCCTCACCCAGAGTGAAGACCATTGCCCGGGCTTGGTTGGG  
GGCCTCAAGAACACGCTGTTTCATAGGCTGGCACTGATCCAGTTTATCCTTTGAGATTACAGAGAAGAT  
CC

**ACGCGT**ACGCGGCCGCTCGAG - GFP Tag - GTTTAA



[View online »](#)

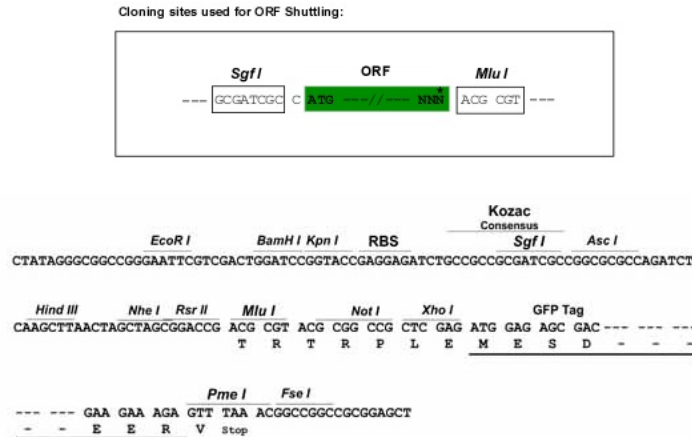
**Protein Sequence:** >RG218033 representing NM\_153268  
Red=Cloning site Green=Tags(s)

MLAVRKARRKLRMGITICSPNPSGKTSSSEVCNADWMASLPPHLHNLPLSNLAIPGSHDSFSYVWDEKSPV  
 GPDQTQAIKRLARISLVKMLMKKWSVTQNLTFREQLAAGIRYFDLRVSSKPGDADQEIYFIHGLFGIKVW  
 DGLMEIDSFLTQHPQEIIFLDFNHFYAMDETHHKCLVLRIQEAFGNKLC PACSVESLTLRRTLWEKNCQVL  
 IFYHCPFYKQYPFLWPGKKIPAPWANTTSVRKLI LFLETTLSERASRGSFHVSQAILTPRVKTIARGLVG  
 GLKNTLVHRLALIPVYPLRF SRRS

TRTRPLE - GFP Tag - V

**Restriction Sites:** SgfI-MluI

**Cloning Scheme:**



**ACCN:** NM\_153268

**ORF Size:** 912 bp

**OTI Disclaimer:** The molecular sequence of this clone aligns with the gene accession number as a point of reference only. However, individual transcript sequences of the same gene can differ through naturally occurring variations (e.g. polymorphisms), each with its own valid existence. This clone is substantially in agreement with the reference, but a complete review of all prevailing variants is recommended prior to use. [More info](#)

**OTI Annotation:** This clone was engineered to express the complete ORF with an expression tag. Expression varies depending on the nature of the gene.

**Components:** The ORF clone is ion-exchange column purified and shipped in a 2D barcoded Matrix tube containing 10ug of transfection-ready, dried plasmid DNA (reconstitute with 100 ul of water).

**Reconstitution Method:**

1. Centrifuge at 5,000xg for 5min.
2. Carefully open the tube and add 100ul of sterile water to dissolve the DNA.
3. Close the tube and incubate for 10 minutes at room temperature.
4. Briefly vortex the tube and then do a quick spin (less than 5000xg) to concentrate the liquid at the bottom.
5. Store the suspended plasmid at -20°C. The DNA is stable for at least one year from date of shipping when stored at -20°C.

**RefSeq:** [NM\\_153268.3](#), [NP\\_695000.1](#)

**RefSeq Size:** 2062 bp

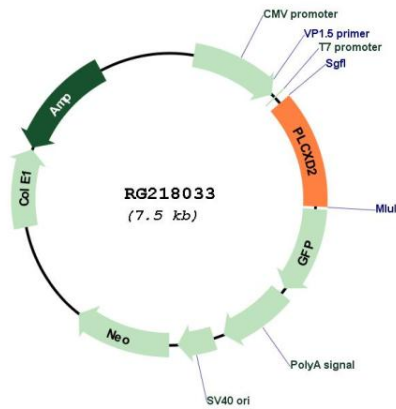
**RefSeq ORF:** 915 bp

**Locus ID:** 257068

**UniProt ID:** [Q0VAA5](#)

**Cytogenetics:** 3q13.2

### Product images:



Circular map for RG218033