

Product datasheet for **RG218021**

ZSCAN2 (NM_181877) Human Tagged ORF Clone

Product data:

Product Type:	Expression Plasmids
Product Name:	ZSCAN2 (NM_181877) Human Tagged ORF Clone
Tag:	TurboGFP
Symbol:	ZSCAN2
Synonyms:	ZFP29; ZNF854
Mammalian Cell Selection:	Neomycin
Vector:	pCMV6-AC-GFP (PS100010)
E. coli Selection:	Ampicillin (100 ug/mL)



[View online »](#)

ORF Nucleotide
Sequence:

>RG218021 ORF sequence, codon optimized.
Due to the complexity of NM_181877, the ORF clone is codon optimized for mammalian Expression.
The nucleotide sequence differs from the reference sequence, yet the amino acid sequence remains identical.

Red=Cloning site Blue=ORF Green=Tags(s)

TTTTGTAATACGACTCACTATAGGGCGGCCGGAATTCGTCGACTGGATCCGGTACCGAGGAGATCTGCC
GCC**CGCATCGCC**

ATGATGGCCGCAGATATTCCAAGGGTCACCACACCCTGTCTAGCTTGGTGCAGGTGCCTCAGGAGGAGG
ACAGGCAGGAGGAGGAGGTCAACGATGATACTCGAAGATGACTCCTGGGTGCAGGAGGCCGCTCCTTCA
AGAGGATGGTCCAGAGAGTGAACATTCCACAGTCAGCGGGCAAAGGTGGACCCCAAGAGGAAGTGACT
AGAGGGCCCCAGGGTGTCTCGGACGCCTCCGAGAGCTGTGCAGGCGGTGGCTGAGGCCCGAGGTGCACA
CCAAGGAGCAAATGCTCACTATGTTGCCAAGGAGATCCAAGCATGGCTGCAGGAGCACCCGCTGAGTC
TTCTGAGGAAGCTGCCGCTCTGGTTGAAGATCTTACCCAGACCCTGCAGGATAGCGATTTTCGAGATTCAG
TCCGAGAACGGAGAGAATTGTAATCAGGACATGTTTGAGAACGAGTCCCAGGAAAATCTTCTCCGAGATGC
CTGAAGGTGAGTCAGCCAGCATAGTGACGGAGAGAGCGACTTCGAAAGGGACGCAGGAATCCAGCGCCT
CCAAGGACACTCCCAGGCGAAGACCACGGCGAGGTGGTGTGAGTCAAGACCGAGAAGTGGGCCAGTTGATC
GGGCTGCAGGGGACATACCTCGGTGAGAAGCCTTATGAATGCCCCAGTGTGGAAAGACATTCAGCAGGA
AATCCCATCTGATTACCCATGAGCGGACGCACACGGGAGAGAAATACTATAAGTGTGACGAATGTGGCAA
GAGTTTTAGCGATGGCAGTAACCTTCCAGGCACACAGACAACACACTGGAGAGAAGCCCTACAAGTGT
CGCGACTGTGGTAAGTCATTTAGCCGACGCGCCAACTGATCACGCATCAGCGAATTCATACTGGAGAGA
AGCCGTTCCAGTGCAGGAGTGCAGGAAAATCCTTTTACGATCTCCTAATCTGATCGCACACCAGAGGAC
CCATACAGGTGAAAAGCCTTATTCTGTCTGAGTGCAGGAAAATCATTGGGAATCGCAGCTCTCTGAAC
ACCCACCAAGGCATTCATACCGGGGAGAAGCCATACGAGTGTAAGAGTGCAGGCAATCATTTTCTTATA
ATTCCAACCTGATTAGGCACCAGCGAATTCATACAGGGGAAAAGCCTTACAAGTGTACAGACTGTGGCA
ACGCTTCTACAAAGTTCTGCTCTCATACCCACCGGAGGACTCACACCGGAGAAAAGCCTTACCAGTGC
AGTGAGTGCAGGAAATCATTTTCAAGATCCAGCAACTGGCTACCCACAGGCGCACCCATATGGTGGAGA
AACCATATAAGTGCAGGTGTGTGTGGGAAGATTTTAGTCAGTCCCTCCCTGATTGCACACCAGGGAAT
GCATACCGGAGAGAAGCCCTACGAGTGCCTGACGTGCGGGGAGAGCTTCAGTTGGAGCTCCAACCTGCTT
AAACACCAGCGAATTCATACCGGTGAGAAGCCCTATAAATGCTCTGAATGCGGAAAGTGCTTTTCCAGC
GCTCACAGCTGGTTCGTGCACCAGAGAACTCATACAGGAGAAAAGCCGTACAAGTGCCCTCATGTGCGGCAA
AAGCTTACAGCAGGGGTCTATACTCGTTATGCATCAGCGGGCTCACTTGGGCGACAAGCCCTACCGGTGC
CCCGAATGTGGGAAAGGCTTTTCTGGAATTCAGTTCTGATCATTACCAGCGGATTCACACTGGTGAAA
AGCCGTACAAATGTCCTGAGTGCAGGAAAAGGTTTAGTAATAGCAGTAATTTTATCACGCACCAAAGAAC
TCATATGAAGGAGAAGCTCTAT

ACGCGTACGCGGCCGCTCGAG - GFP Tag - GTTTAA

Protein Sequence: >RG218021 representing NM_181877
 Red=Cloning site Green=Tags(s)

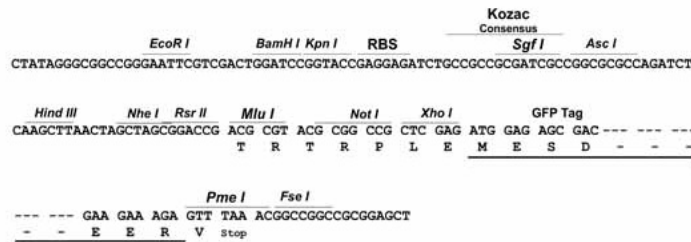
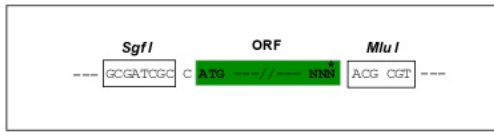
MMAADIPRVTTPLSSLVQVPQEEDRQEEVTTMILEDSDSWVQEAVLQEDGPESEFPFQSAGKGGPQEEVT
 RGPQALGRLRELRRWL RPEVHTKEQMLTMLPKEIQAWLQEHREPESSEAAAALVEDLTQTLQDSDFEIQ
 SENGENCNQDMFENESRKIFSEMPEGESAQHSDFERDAGIQRLQGHSPGEDHGEVVSQDREVGQLI
 GLQGTYLGEKPYECPQCGKTF SRKSHLITHTERTHTGEKYKCECGKSFSDGSNFSRHQTTHTEKPYKC
 RDCGKSF SRSANLITHQRIHTGEKPFQCAECGKSF SRSPNLIAHQRTHTGEKPYSCPEGKSF GNRSSLN
 THQGIHTGEKPYECKECGESFSYNSNLIRHQRIHTGEKPYKCTDCGQRF SQSSALITHRRTHTEKPYQC
 SECCKSF SRSSLATHRRTHMVEKPYKCGVCGKSF SQSSSLIAHQGMHTGEKPYECLTCGESFSWSSNLL
 KHQRIHTGEKPYKCECGKCF SQRSQLVVHQRTHTGEKPYKCLMCGKSF SRGSILVMHQRAHLGDKPYRC
 PECGKGF SWNSVLIHQRIHTGEKPYKCECGKGF SNSSNFITHQRTHMKEKLY

TRTRPLE - GFP Tag - V

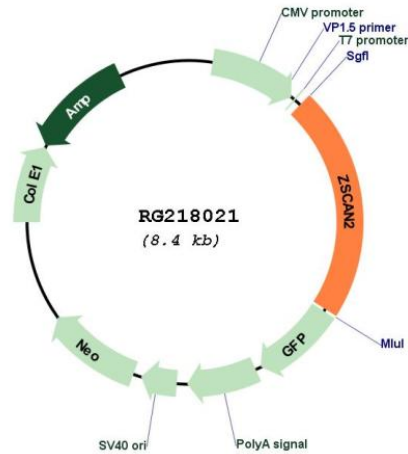
Restriction Sites: SgfI-MluI

Cloning Scheme:

Cloning sites used for ORF Shutting:



Plasmid Map:



ACCN: NM_181877

ORF Size: 1842 bp

OTI Disclaimer: The molecular sequence of this clone aligns with the gene accession number as a point of reference only. However, individual transcript sequences of the same gene can differ through naturally occurring variations (e.g. polymorphisms), each with its own valid existence. This clone is substantially in agreement with the reference, but a complete review of all prevailing variants is recommended prior to use. [More info](#)

OTI Annotation: This clone was engineered to express the complete ORF with an expression tag. Expression varies depending on the nature of the gene.

Components: The ORF clone is ion-exchange column purified and shipped in a 2D barcoded Matrix tube containing 10ug of transfection-ready, dried plasmid DNA (reconstitute with 100 ul of water).

Reconstitution Method:

1. Centrifuge at 5,000xg for 5min.
2. Carefully open the tube and add 100ul of sterile water to dissolve the DNA.
3. Close the tube and incubate for 10 minutes at room temperature.
4. Briefly vortex the tube and then do a quick spin (less than 5000xg) to concentrate the liquid at the bottom.
5. Store the suspended plasmid at -20°C. The DNA is stable for at least one year from date of shipping when stored at -20°C.

RefSeq: [NM_181877.3](#), [NP_870992.2](#)

RefSeq Size: 3756 bp

RefSeq ORF: 1845 bp

Locus ID: 54993

UniProt ID: [Q7Z7L9](#)

Cytogenetics: 15q25.2

Protein Families: Transcription Factors

Gene Summary: The protein encoded by this gene contains several copies of zinc finger motif, which is commonly found in transcriptional regulatory proteins. Studies in mice show that this gene is expressed during embryonic development, and specifically in the testis in adult mice, suggesting that it may play a role in regulating genes in germ cells. Alternative splicing of this gene results in several transcript variants encoding different isoforms. [provided by RefSeq, Jul 2008]