

## Product datasheet for **RG218019**

### Caspr (CNTNAP1) (NM\_003632) Human Tagged ORF Clone

#### Product data:

Product Type:	Expression Plasmids
Product Name:	Caspr (CNTNAP1) (NM_003632) Human Tagged ORF Clone
Tag:	TurboGFP
Symbol:	Caspr
Synonyms:	CASPR; CHN3; CNTNAP; NRXN4; P190
Mammalian Cell Selection:	Neomycin
Vector:	pCMV6-AC-GFP (PS100010)
E. coli Selection:	Ampicillin (100 ug/mL)
ORF Nucleotide Sequence:	>RG218019 representing NM_003632 Red=Cloning site Blue=ORF Green=Tags(s)

TTTTGTAATACGACTCACTATAGGGCGCCGGGAATTCGTCGACTGGATCCGGTACCGAGGAGATCTGCCGCC**CGATCGCC**

ATGATGCATCTCCGGCTCTTCTGCATCCTGCTCGCCGCGGTCTCAGGAGCCGAGGGCTGGGGCTACTACG  
GCTGCGACGAGGAGCTGGTGGTCCCCTGTATGCACGCTCCCTGGGCGCCTCCTCTACTACAGTCTCT  
TACTGCGCCGATTTCGCCAGGCTGCACGGCATAAGCGGGTGGTACCACGGATTGGGGATCCGAATCCC  
TGGCTCCAGATAGACTTAATGAAGAAGCACCAGGATCCGGGCGGTGCCACACAGGGCTCCTTAATTCTT  
GGGACTGGGTACACGTTACATGCTACTCTACGGCAGCCGAGTGGACAGCTGGACACCGTTCTACCAGCG  
AGGGCACAACTCGACCTTCTTTGGTAACGTGAACGAGTCGGCGGTGGTGCGCCATGACCTGCACTTCCAC  
TTCAGTGCAGCTACATCCGCATCGTGCCTGGCCTGGAACCCACGCGCAAGATCGGCCCTGAGGCTCG  
GCCTCTATGGCTGCCATACAAGGCCGACATACTCTATTTTCGACGGCGACGATGCCATCTCTACCAGCTT  
CCCAGGAGGGTTCAGCCGAAGCCTGTGGGACGTGTTCCGCTTCAGCTTCAAGACCGAGGAGAAGGACGGT  
CTTCTGCTGCACGCCGAGGGCGCCAGGGGACTACGTGACGCTCGAGCTGGAGGGGGCACACCTGCTGC  
TGCACATGAGCCTGGGCAGCAGCCATCCAGCCAAGACCAGGTACACCACCGTGAAGCGAGCGGGAGT  
CCTCAATGACCAGCACTGGCACTATGTGCGGGTGGACCGATTTGGCCGCGATGTAATTTACCCCTGGAC  
GGCTATGTGCAGCGCTTTATTCTCAATGGAGACTTCGAGAGGCTGAACCTGGCACTGAGATGTTTCATCG  
GAGGCTGGTGGGCGCCGCGGAAGAACCTGGCCTATCGGCATAACTTCGCGCGCTGCATAGAAAACGT  
AATCTTCAACCGCTCAACATCGCAGACCTGGCCGTGCGGCGCCATTCCCGGATCACCTTCGAGGGTAAG  
GTGGCTTTTCGTTGCCTGGACCCGGTACCGCACCTATCAACTTCGAGAGCCCTCACAACCTCGTTCAAG  
TGCCCGGTTTCCACGCGGTGGCCGCTGGCAGTCTCATTTTCGCTTCCGACCTGGGACCTACCGGGCT  
TCTCCTTTTCTCCGCTGCGGGACGGGCTGGCCACGTGGAGCTGACGCTCAGCGAAGGGCAGGTCAAC  
GTGTCCATCGCGCAGAGCGGCCAAAGAAGCTTCAGTTTCGCTGCTGGGTACCGACTGAATGACGGCTTTT  
GGCAGGAGGTGAATTTTGTGGCACAGAAAACCATGCAGTTATCAGCATTGATGATGTGGAAGGGCAGAG  
GGTCAGGGTCTCATACCGTTGCTGATCCGGACAGGGACCTCATATTTCTTTGGGGTGTCCCAAGCCA



[View online »](#)

GCCAGTCGATGGGACTGCCACTCCAACCAGACGGCATTCCATGGCTGCATGGAGCTGCTCAAGGTGGATG  
 GTCAACTGGTCAACCTGACTCTGGTGGAGGGCCGGCGGCTTGGATTCTATGCTGAGGTCCTCTTTGATAC  
 ATGTGGCATACTGATAGGTGCAGCCCTAACATGTGTGAGCATGATGGACGCTGTACCAGTCTTGGGAT  
 GACTTCATTTGCTACTGCGAACTGACGGCTACAAGGGAGAGACCTGCCACACACCTTTGTATAAGGAAT  
 CCTGTGAGGCTTATCGGCTCAGTGGGAAAACCTTCTGAAACTTCACCATTGATCCTGATGGCAGTGGCCC  
 CCTGAAGCCATTTGTAGTGTACTGTGATATCCGAGAGAACCAGCGTGGACAGTTGTGCGGCATGACAGG  
 CTGTGGACAACCTCGAGTGACAGTTCCAGCATGGAGCGGCCATTCTGGGGCTATCCAGTGGAAATG  
 CATCCTGGGAGGAAGTCAGTGCCCTTGCCAATGCTTCCCAGCATTGTGAACAGTGGATCGAGTTCTCCTG  
 CTACAATTCGCGCTGCTCAACTGCAGGAGGCTACCCCTACAGCTTTTGGATTGGCCGAAATGAGGAG  
 CAGCACTTCTACTGGGGAGGCTCCAGCCTGGGATCCAGCGCTGTGCCTGTGGTCTGGACCGGAGCTGTG  
 TGGACCTGCCTTGTACTGCAACTGTGACGCTGACCAGCCCCAGTGGAGAACTGACAAGGGACTGCTGAC  
 CTTTGTGGACCATCTGCCTGTCACTCAGGTAGTGATAGGGGATACGAACCGCTCCACTTCTGAGGCCAG  
 TTCTTCTGAGGCCTCTGCGCTGCTATGGCGATCGAAATTCCTGGAACACCATTTCTTCCACACCGGGG  
 CTGCACTACGCTTCCCCCAATCCGTGCCAACCACAGCCTGGATGTCTCCTTCTACTTCAGGACCTCTGC  
 TCCCTCGGGGTCTTCTAGAGAATATGGGGGCCCTTACTGCCAGTGGCGCCGACCTTATGTGCGGGTG  
 GAACTCAACACATCCCGGATGTGGTCTTGCCTTTGATGTGGGAATGGGGATGAGAACCTCACAGTAC  
 ACTCAGACGACTTTGAGTTCAATGATGACGAGTGGCACCTGGTCCGGGCTGAAATCAACGTGAAGCAGGC  
 CCGGCTCCGAGTGGATCACCGGCCCTGGGTTCTGCGGCCATGCCACTGCAGACCTACATCTGGATGGAG  
 TATGACCAGCCCCCTATGTGGGATCTGCAGAGCTTAAGAGACGCCCTTTGTGGGTTGCTTGGGGCCA  
 TGCGTCTGAACGGAGTACTCTGAACCTGGAGGGCCGTGCCAATGCCTCTGAGGGTACCTCACCAAAGT  
 CACAGGCCACTGTGCCACCCCTCGGCTCCCCTGTTTCCATGGAGGCCGCTGCGTGGAGCGCTATAGCTAC  
 TACAGTGTGACTGTGACCTCACGGCTTTTGTGGCCACTGCAACCACGATATTGGTGGTTTCTTTG  
 AGCCGGCACCTGGATGCGCTATAACCTACAGTCAGCGCTGCGCTCTGCAGCCAGGGAGTTCTCCACAT  
 GCTGAGCCGGCCAGTGCCAGGCTATGAGCCTGGCTACATCCCGGCTATGATACTCCGGGCTATGTGCTT  
 GGCTACCATGGCCCCGGTACCGCTGCCCGACTACCCCGGCCCTGGTCCGCTGTGCCCGTTACCGTG  
 GGCTGTCTACAACGTTACGGGAGAGGAGTCTCCTTCAGCTTACGACCCAGCTCCGCCCTGCTGTCTCT  
 GCTCTACGTCAGTTCTTTGTTGCTGACTACATGGCTGTGCTCATCAAGGATGATGGGACCTTCAGCTG  
 CGATATCAGTGGGCACCAGTCCCTACGTGTACCAGCTAACCCTCGACCAGTACCAGTGGCCAGCCCC  
 ATAGCATCAATATCACCCGTGTTTACCGGAACCTTTCATCCAGGTGGACTACTCCCACTGACAGAGCA  
 GAAGTTCTCGCTGTTGGTGGACAGCCAGTTGGACTCACCAAGGCCTTGTATTTAGGGCGTGTGATGGAG  
 ACAGGAGTCATTGACCCGGAGATCCAGCGCTACAACACCCAGGTTTCTCAGGCTGCCTGTCTGGTGTTC  
 GATTCAACAACGTGGCTCCCCTCAAGACCCACTTCCGAACCCCTCGACCCATGACTGCTGAGCTAGCTGA  
 GGCCCTTCGAGTTCAGGGAGAAGTGTCCGAATCTAATTGCGGAGCTATGCCACGTCTTGTTCAGAGGTG  
 CCACCTGAGCTTGATCCCTGGTATCTGCCCCAGACTTCCCCTACTACCATGATGAAGGATGGGTTGCCA  
 TACTTTTAGGCTTTTGGTGGCCTTTCTGCTGCTGGGGCTGGTGGGAATGTTGGTGTCTTCTATCTGCA  
 AAATCATCGCTATAAGGGCTCCTACCATACCAATGAGCCCAAGGCTGCCACGAGTACCATCCTGGCAGC  
 AAACCTCCCCTACCCACTCAGGCCCTGCCAGGTCCCCACCCCTACAGCAGTCCCAACCAAGCTCCAG  
 CCTCAGCCCCAGCCCCAGCCCCAATCCAGCCCCAGCCCTGGCCCCGGGATCAGAACCTACCCAGAT  
 CCTGGAGGAGTCCAGGTCTGAA

ACGCGTACGCGGCCGCTCGAG – GFP Tag – GTTTAA

Protein Sequence: >RG218019 representing NM\_003632  
 Red=Cloning site Green=Tags(s)

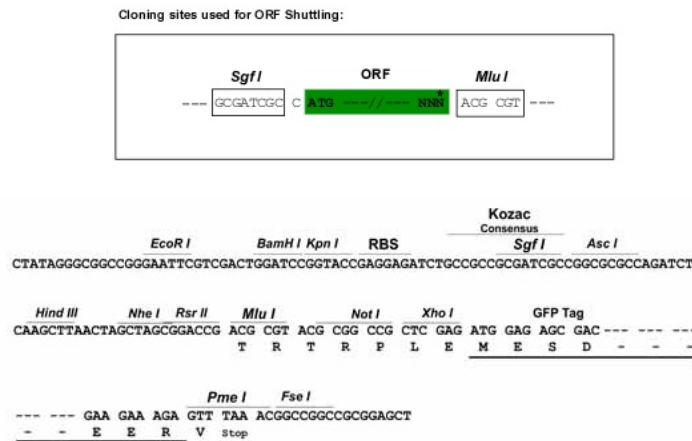
```

MMHLRLFCILLA AVSGAEGWGYGCDEELVGPLYARSLGASSYYSLLTAPRFARLHGISGWSPRIGDPPN
WLQIDLKMKHRIRAVATQGSFNWDWVTRYMLLYGDRVDSWTPFYQRGHNSTFFGNVNESAVVRHDLHFH
FTARYIRIVPLAWNPRGKIGRLRLGLYGCPYKADILYFDGDDAISYRFRPGVSRSLWDVFAFSFKTEEKDG
LLLHAEGAQGDYVLTLEGAHLLHMSLGSSPIQPRPGHTTVSAGVLDNQHWHYVRVDRFGRDVNFTLD
GYVQRFILNGDFERLNLDTMF IGGLVGAARKNLAYRHNRFCIENVIFNVRVNIADLAVRRHSRITFEGK
VAFRCLDPVPHPI NFGGPHNFVQVPGFPRRRLAVSFRFRWDLTGLLLFSRLGDGLGHVELTSEGQVN
VSIAQSGRKKLQFAAGYRLNDGFWEVNFVAQENHAVISIDDEVEGAEVRSYPLLIRTGTSYFFGGCPKP
ASRWDCHSNQTA FHGCMELLKVDGQLVNLTLVEGRRLGFYAEVLFDTCGITDRCSNMCEHDGRCYQSWD
DFICYCELTGYKGETCHTPLYKESCEAYRLSGKTSGNFTIDPDGSGPLKPFVYVCDIRENRAWTVVRHDR
LWTRRTVGTSSMERPFLGAIQYWNASWEEVSALANASQHCQWIEFSCYNSRLLNTAGGYPYSFWIGRNEE
QHFWGGSQPGIQRACGLDRSCVDPALYCNCADQPQWR TDKGLLTFVDHLPVTQVVIQDNTNRSTSEAQ
FFLRPLRCYGDNRNSWNTISFHTGAALRFPIRANHSLDVSFYFRTSAPSGVFLENMGGPYCQWRPYPYRV
ELNTRSDVYVAFDVGNGDENLTVHSDDDFNDDEWHLVRAEINVKQARLRVDHRPWVLRPMLQTYIWME
YDQPLYVYGAELKRRPFVGLRAMRLNGVTLNLEGRANASEGTSNPCTGHCAHPRLPCFHGGRCVERYSY
YTCDLTAFDGPGYCNHDI GGFEPGTWMRYNLQSALRSAAREFSHMLSRPVPYEPGYIPGYDTPGYVP
GYHGGPYRLPDYPRGRPVPGYRGPVYVNTGEEVSFSSTSSAPAVLLYVSSFVRDYMAVLIKDDGTLQL
RYQLGTSPYVYQLTTRPVTGQPHSINITRVYRNLFIQVDYFPLTEQKFSLLVDSQLDSPKALYLGRVME
TGVIDPEIQRYNTPGFSGLSGVRFNNVAPLKTHFRTPRPMTAELAEALRVQELSESNCAMPRLVSEV
PPELDPWYLPDPFPYYHDEGWVAILLGLVAFLLGLVGLMLVLFYLNHRYKGSYHTNEPKAAHEYHPGS
KPPLPTSGPAQVPTPTAAPNQAPASAPAPATPAPAPGPRDQNLQILEESRSE
    
```

TRTRPLE - GFP Tag - V

Restriction Sites: SgfI-MluI

Cloning Scheme:

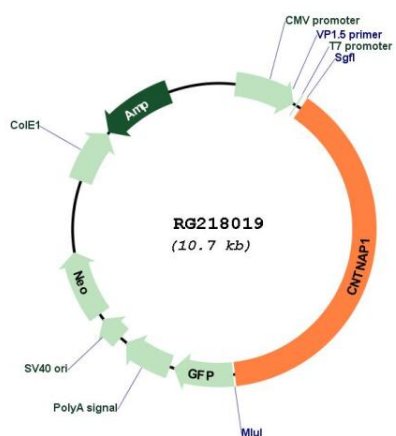


ACCN: NM\_003632

ORF Size: 4152 bp

<b>OTI Disclaimer:</b>	The molecular sequence of this clone aligns with the gene accession number as a point of reference only. However, individual transcript sequences of the same gene can differ through naturally occurring variations (e.g. polymorphisms), each with its own valid existence. This clone is substantially in agreement with the reference, but a complete review of all prevailing variants is recommended prior to use. <a href="#">More info</a>
<b>OTI Annotation:</b>	This clone was engineered to express the complete ORF with an expression tag. Expression varies depending on the nature of the gene.
<b>Components:</b>	The ORF clone is ion-exchange column purified and shipped in a 2D barcoded Matrix tube containing 10ug of transfection-ready, dried plasmid DNA (reconstitute with 100 ul of water).
<b>Reconstitution Method:</b>	<ol style="list-style-type: none"><li>1. Centrifuge at 5,000xg for 5min.</li><li>2. Carefully open the tube and add 100ul of sterile water to dissolve the DNA.</li><li>3. Close the tube and incubate for 10 minutes at room temperature.</li><li>4. Briefly vortex the tube and then do a quick spin (less than 5000xg) to concentrate the liquid at the bottom.</li><li>5. Store the suspended plasmid at -20°C. The DNA is stable for at least one year from date of shipping when stored at -20°C.</li></ol>
<b>RefSeq:</b>	<a href="#">NM_003632.1</a> , <a href="#">NP_003623.1</a>
<b>RefSeq Size:</b>	5293 bp
<b>RefSeq ORF:</b>	4155 bp
<b>Locus ID:</b>	8506
<b>UniProt ID:</b>	<a href="#">P78357</a>
<b>Cytogenetics:</b>	17q21.2
<b>Domains:</b>	F5_F8_type_C, LamG, EGF
<b>Protein Families:</b>	Druggable Genome, Transmembrane
<b>Protein Pathways:</b>	Cell adhesion molecules (CAMs)
<b>Gene Summary:</b>	The gene product was initially identified as a 190-kD protein associated with the contactin-PTPRZ1 complex. The 1,384-amino acid protein, also designated p190 or CASPR for 'contactin-associated protein,' includes an extracellular domain with several putative protein-protein interaction domains, a putative transmembrane domain, and a 74-amino acid cytoplasmic domain. Northern blot analysis showed that the gene is transcribed predominantly in brain as a transcript of 6.2 kb, with weak expression in several other tissues tested. The architecture of its extracellular domain is similar to that of neurexins, and this protein may be the signaling subunit of contactin, enabling recruitment and activation of intracellular signaling pathways in neurons. [provided by RefSeq, Jan 2009]

Product images:



Circular map for RG218019