

Product datasheet for **RG218013**

JRK (NM_001077527) Human Tagged ORF Clone

Product data:

Product Type:	Expression Plasmids
Product Name:	JRK (NM_001077527) Human Tagged ORF Clone
Tag:	TurboGFP
Symbol:	JRK
Synonyms:	jerky; JH8
Mammalian Cell Selection:	Neomycin
Vector:	pCMV6-AC-GFP (PS100010)
E. coli Selection:	Ampicillin (100 ug/mL)



[View online »](#)

ORF Nucleotide Sequence:

>RG218013 representing NM_001077527
 Red=Cloning site Blue=ORF Green=Tags(s)

TTTTGTAATACGACTCACTATAGGGCGGCCGGAATTCGTCGACTGGATCCGGTACCGAGGAGATCTGCC
 GCCCGCATCGCC

ATGGCCTCCAAGCCGGCTGCCGGAAGAGCAGAGGGGAGAAGCGGAAGAGGGTGGTGTGACTGAAGG
 AGAAGATTGACATCTGCACGCGCCTGGAGAAGGGCGAGAGCCGGAAGGCACTGATGCAGGAGTACAATGT
 GGGCATGTCCACCCTCTACGACATCAGGGCCACAAGGCGCAGCTGCTCCGGTTCTTCGCCAGCTCGGAC
 TCCAACAAGGCGCTGGAGCAGCGGCGCACGCTGCACACGCCAAGCTGGAGCACCTGGACCGCGTCTGT
 ACGAGTGGTTCCTGGGAAGCGCTCCGAGGGCGTCCCCGTGTCAGGCCCATGCTCATCGAGAAGGCCAA
 GGACTTCTACGAGCAGATGCAGCTCACTGAGCCCTGCGTGTCTCCGAGGGTGGCTTTGGCGCTTTAAG
 GCCAGACACGGCATTAAAAAGCTAGATGCATCCAGTAAAAGCAGTCAGCCGACCACCAGGCCGCGGAGC
 AGTTCTGTGCGTTTTTTCAGGAGCTTGGCTGCTGAGCACGGGCTGTCGCCGAGCAGGTTTACAACGCTGA
 TGAGACCGGCCTTTTCTGGCGGTGCTGCCAAATCCCCTCCGGAAGGCGGGGCTGTGCCTGGCCCAAG
 CAGGGCAAGGACCGGCTGACCGTGTGTGTGCCAACGCCACGGGCTCCACAGGCTCAAGCCCTTGG
 CCATCGGGAAGTGCAGCGGTCCCAGGGCTTCAAAGGCATCCAGCACCTGCCCGTCGCTATAAGGCCCA
 GGGGAATGCCTGGGTGGACAAGGAGATTTTTCCGATTGGTTCATCATATCTTTGTGCCCTCGGTGAGA
 GAGCACTTCAGAACCATAGGTTTCCCGAAGACAGCAAAGCCGTTCTCTTGTGACAGCTCCCGGGCTC
 ACCCGCAGGAGGCGAGCTGGTGTCCAGTAACGTTTTCCACATCTTCTGCTGCCAGCGTGGCCTCATT
 GGTGCAGCCATGGAGCAGGGCATTCCGAGAGATTTTATGAGGAACCTCATTAAACCCTCCGGTCCCCTG
 CAGGGCCCCATGCCGCTACAACATGAACGATGCCATATTCAGCGTGGCCTGTGCCTGGAACGCACTCC
 CTAGCCACGCTTTCAGGCGGGCCTGGAGGAAGCTGTGGCGTCGTTGCGTTTCCGAAGGCTCCTCCTC
 TGAGGAGGAGTTGGAGGCAGAGTGTCTCCAGTGAAGCCCCACAACAAGTCTTTGCACACATCCTGGAG
 CTTGTGAAGGAAGGCTCCTCCTGCCCGGCCAGCTTCGCCAGCGCCAGGCGCCAGCTGGGGGTAGCGG
 GAAGGGAGGCAGAAGGGGACGGCCCCCTGCTGCCACGTCGCCAGCAGAGGTTGTGTGGAGTTCAGAAAA
 GACTCCAAAAGCTGACCAGGACGGCGGAGGAGATCCTGGTGGAGGCGAGGAGGTGGCCTGGGAGCAGGCG
 GCCGTGGCCTTTGACGAGTCTGCGCTTTGCCGAGCGGCAGCCATGCTTCAGTGCAGGAAGTGGGGC
 AGCTGCGGGCGCTGCGTGCCTGTTCCGGAGCCAGCAGGAGACTGTGGGCCTGAGGATGTGGTAGT
 GACCTACCAGAGGAGTTGGCAATCCTAAGTGTGCTGCTGGAGGCCTCTACAGAGACA

ACGCGTACGCGGCCGCTCGAG – GFP Tag – GTTTAA

Protein Sequence:

>RG218013 representing NM_001077527
 Red=Cloning site Green=Tags(s)

MASKPAAGKSRGEKRRVVLTLKEKIDICTRLEKGESRKALMQEYNVGMSTLYDIRAHKAQLLRFASSD
 SNKALEQRRTLHTPKLEHLDRVLYEWFLGKRSEGVVSGPMLIEKAKDFYEQMLTEPCVFSGGWLWRFK
 ARHGIKKLDASSEKQSADHQAAEQCAFFRSLAAEHLSAEQVYNADETGLFWRCLPNPTPEGGAVPGPK
 QGKDRLLVLMCANATGSHRLKPLAIGKCSGPRAFKGIQHLPVAYKAQGNWVDKEIFSDWFHHIFVPSVR
 EHFRTIGLPEDSKAVLLLDSRAHPQEAELVSSNVFTIFLPASVASLVQPMEQGIRDFMRNFINPPVPL
 QGPHARYNMNDIAIFSVACAWNAVPSHVFRRAWKRWPSVAFVFAEGSSSEEELEAECFPVKPHNKSFAHILE
 LVKEGSSCPQLRQRQAASWGVAGREAEGRPPAATSPAIEVWSSEKTPKADQDGGGDPGEGEVAWEQA
 AVAFDAVLRFAERQPCFSAQEVGQLRALRAVFRSQQETVGLDVEDVVVTSPEELAIKCCLEASTET

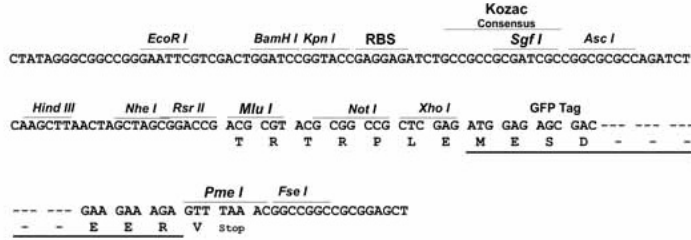
TRTRPLE – GFP Tag – V

Restriction Sites:

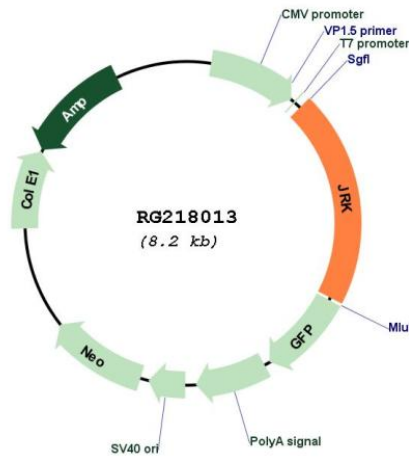
Sgfl-MluI

Cloning Scheme:

Cloning sites used for ORF Shutting:



Plasmid Map:



ACCN:	NM_001077527
ORF Size:	1668 bp
OTI Disclaimer:	The molecular sequence of this clone aligns with the gene accession number as a point of reference only. However, individual transcript sequences of the same gene can differ through naturally occurring variations (e.g. polymorphisms), each with its own valid existence. This clone is substantially in agreement with the reference, but a complete review of all prevailing variants is recommended prior to use. More info
OTI Annotation:	This clone was engineered to express the complete ORF with an expression tag. Expression varies depending on the nature of the gene.
Components:	The ORF clone is ion-exchange column purified and shipped in a 2D barcoded Matrix tube containing 10ug of transfection-ready, dried plasmid DNA (reconstitute with 100 ul of water).
Reconstitution Method:	<ol style="list-style-type: none">1. Centrifuge at 5,000xg for 5min.2. Carefully open the tube and add 100ul of sterile water to dissolve the DNA.3. Close the tube and incubate for 10 minutes at room temperature.4. Briefly vortex the tube and then do a quick spin (less than 5000xg) to concentrate the liquid at the bottom.5. Store the suspended plasmid at -20°C. The DNA is stable for at least one year from date of shipping when stored at -20°C.
RefSeq:	NM_001077527.1 , NP_001070995.1
RefSeq Size:	3578 bp
RefSeq ORF:	1671 bp
Locus ID:	8629
UniProt ID:	O75564
Cytogenetics:	8q24.3
Protein Families:	Transcription Factors
Gene Summary:	This gene encodes a conserved protein that is similar to DNA-binding proteins, such as major centromere autoantigen B (CENPB). Inactivation of the related gene in mice resulted in epileptic seizures. Childhood Absence Epilepsy (CAE) has been mapped to the same chromosomal location (8q24.3) as this gene. Alternative splicing results in multiple transcript variants. [provided by RefSeq, Jul 2013]