

## Product datasheet for **RG218012**

### APOL3 (NM\_030644) Human Tagged ORF Clone

#### Product data:

Product Type:	Expression Plasmids
Product Name:	APOL3 (NM_030644) Human Tagged ORF Clone
Tag:	TurboGFP
Symbol:	APOL3
Synonyms:	apoL-III; APOLIII; CG12_1; CG121
Mammalian Cell Selection:	Neomycin
Vector:	pCMV6-AC-GFP (PS100010)
E. coli Selection:	Ampicillin (100 ug/mL)
ORF Nucleotide Sequence:	>RG218012 representing NM_030644 Red=Cloning site Blue=ORF Green=Tags(s)

TTTTGTAATACGACTCACTATAGGGCGGCCGGAATTCGTCGACTGGATCCGGTACCGAGGAGATCTGCC  
GCC**CGATCGCC**

ATGGACTCAGAAAAGAAACGCTTTACTGAAGAGGCCACCAAACTTCCGGGAGAGAGTCAGCCCAGTGC  
ATCTGCAAATCCTGCTGACTAACAATGAAGCCTGGAAGAGATTCGTGACTGCGGCTGAATTGCCAGGGA  
TGAGGCAGATGCTCTACGAAGCTCTGAAGAAGCTTAGAACATATGCAGCTATTGAGGACGAATATGTG  
CAGCAGAAAGATGAGCAGTTTAGGGAATGGTTTTTGAAGAGTTTCCCAAGTCAAGAGGAAGATCCAGG  
AGTCCATAGAAAAGCTTCGTGCCCTTGCAAATGGTATTGAAGAGGTCCACAGAGGCTGCACCATCTCAA  
TGTGGTGTCCAGCTCCACTGGCGCTGCCTCTGGCATCATGTCCCTTGCTGGTCTTGTTTTGGCACCATT  
ACAGCAGGGACGAGTCTGGCCCTTACTGCAGCTGGGGTAGGGCTGGGAGCAGCGTCTGCTGTGACTGGGA  
TCACCACCAGCATCGTGGAGCACTCATACACATCATCAGCAGAAGCTGAAGCCAGCAGGCTGACTGCAAC  
CAGCATTGACCGATTGAAGGATTTAAGGAAGTTATGCGTGACATCACACCAACTTACTTTCCCTTCTT  
AATAATTATTACGAAGCCACACAAACCATTGGGAGTGAATCCGTGCCATCAGGCAAGCCAGAGCCAGGG  
CCCGACTCCCTGTGACCACCTGGCGAATCTCAGCTGGAAGTGGTGGTCAAGCAGAGAGAACGATTGCAGG  
CACCACCCGGGCAGTGAGCAGAGGAGCCCGGATCCTGAGTGCACCACTCAGGCATCTTCTTGCAGTG  
GATGTGGTCAACCTTGTATACGAGTCAAAGCACTTGCATGAGGGGCAAAGTCTGCATCTGCTGAGGAGC  
TGAGGCGGCAGGCTCAGGAGCTGGAGGAAATCTAATGGAGCTCACTCAGATCTATCAGCGTCTGAATCC  
ATGCCATACCCAC

**ACGCGT**ACGCGGCCGCTCGAG - GFP Tag - GTTTAA



[View online »](#)

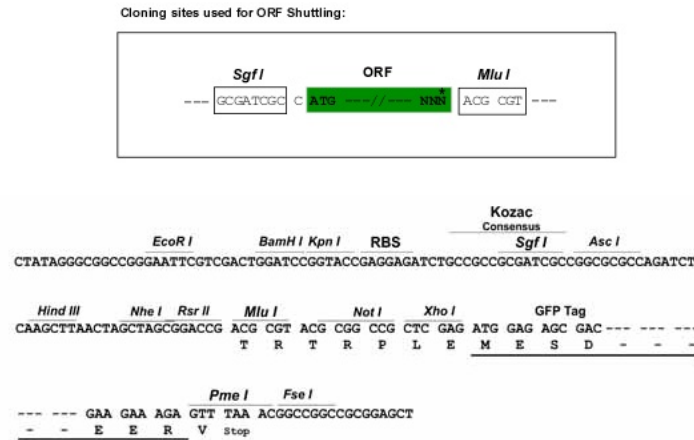
**Protein Sequence:** >RG218012 representing NM\_030644  
Red=Cloning site Green=Tags(s)

MDSEKKRFTEEATKYFRERVSPVHLQILLTNNEAWKRFVTADELPRDEADALYEALKKLRTYAAIEDEYV  
 QQKDEQFREWFLKEFPQVKRKIQESIEKLRALANGIEEVHRGCTISNVVSSSTGAASGIMSLAGLVLAPF  
 TAGTSLALTAAGVGLGAASAVTGITTSIVEHSYSSAEAEASRLTATSIDRLKVFKEVMRDITPNLLSLL  
 NNYYEATQTIGSEIRAIRQARARARLPVTTWRISAGSGGQAERTIAGTTTRAVSRGARILSATTSGIFLAL  
 DVVNLVYESKHLHEGAKSASAEELRRQAQLEENLMELTQIYQRLNPCHTH

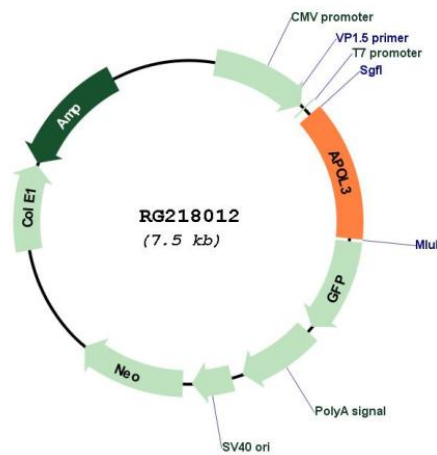
TRTRPLE - GFP Tag - V

**Restriction Sites:** SgfI-MluI

**Cloning Scheme:**



**Plasmid Map:**



**ACCN:** NM\_030644

**ORF Size:** 993 bp

<b>OTI Disclaimer:</b>	The molecular sequence of this clone aligns with the gene accession number as a point of reference only. However, individual transcript sequences of the same gene can differ through naturally occurring variations (e.g. polymorphisms), each with its own valid existence. This clone is substantially in agreement with the reference, but a complete review of all prevailing variants is recommended prior to use. <a href="#">More info</a>
<b>OTI Annotation:</b>	This clone was engineered to express the complete ORF with an expression tag. Expression varies depending on the nature of the gene.
<b>Components:</b>	The ORF clone is ion-exchange column purified and shipped in a 2D barcoded Matrix tube containing 10ug of transfection-ready, dried plasmid DNA (reconstitute with 100 ul of water).
<b>Reconstitution Method:</b>	<ol style="list-style-type: none"><li>1. Centrifuge at 5,000xg for 5min.</li><li>2. Carefully open the tube and add 100ul of sterile water to dissolve the DNA.</li><li>3. Close the tube and incubate for 10 minutes at room temperature.</li><li>4. Briefly vortex the tube and then do a quick spin (less than 5000xg) to concentrate the liquid at the bottom.</li><li>5. Store the suspended plasmid at -20°C. The DNA is stable for at least one year from date of shipping when stored at -20°C.</li></ol>
<b>RefSeq:</b>	<a href="#">NM_030644.2</a>
<b>RefSeq Size:</b>	2328 bp
<b>RefSeq ORF:</b>	996 bp
<b>Locus ID:</b>	80833
<b>UniProt ID:</b>	<a href="#">O95236</a>
<b>Cytogenetics:</b>	22q12.3
<b>Gene Summary:</b>	This gene is a member of the apolipoprotein L gene family, and it is present in a cluster with other family members on chromosome 22. The encoded protein is found in the cytoplasm, where it may affect the movement of lipids, including cholesterol, and/or allow the binding of lipids to organelles. In addition, expression of this gene is up-regulated by tumor necrosis factor-alpha in endothelial cells lining the normal and atherosclerotic iliac artery and aorta. Alternative splicing results in multiple transcript variants. [provided by RefSeq, Mar 2015]