

Product datasheet for **RG218011**

5 HT1A (HTR1A) (NM_000524) Human Tagged ORF Clone

Product data:

Product Type:	Expression Plasmids
Product Name:	5 HT1A (HTR1A) (NM_000524) Human Tagged ORF Clone
Tag:	TurboGFP
Symbol:	5 HT1A
Synonyms:	5-HT-1A; 5-HT1A; 5HT1a; ADRB2RL1; ADRBRL1; G-21; PFMCD
Mammalian Cell Selection:	Neomycin
Vector:	pCMV6-AC-GFP (PS100010)
E. coli Selection:	Ampicillin (100 ug/mL)
ORF Nucleotide Sequence:	>RG218011 representing NM_000524 Red=Cloning site Blue=ORF Green=Tags(s)

TTTTGTAATACGACTCACTATAGGGCGGCCGGAATTCGTCGACTGGATCCGGTACCGAGGAGATCTGCC
GCC**CGATCGCC**

ATGGATGTGCTCAGCCCTGGTCAGGGCAACAACACCACATCACCACCGGCTCCCTTTGAGACCGCGGCCA
ACACTACTGGTATCTCCGACGTGACCGTCAGCTACCAAGTGATCACCTCTCTGCTGCTGGGCACGCTCAT
CTTCTGCGCGGTGCTGGCAATGCGTGCGTGGTGGCTGCCATCGCCTTGGAGCGCTCCCTGCAGAACGTG
GCCAATTATCTTATTGGCTCTTTGGCGGTACCGACCTCATGGTGTGGTGTGGTGTGCCCATGGCCG
CGCTGTATCAGGTGCTCAACAAGTGGACTGGGCCAGGTAACCTGCGACCTGTTTCATCGCCCTCGACGT
GCTGTGCTGCACCTCATCCATCTTGACCTGTGCGCCATCGCGCTGGACAGGTAAGTGGCCATCACGGAC
CCCATCGACTACGTGAACAAGAGGACGCCCCGGCGCGCCGCTGCGCTCATCTCGCTCACTTGGCTTATTG
GCTTCCTCATCTCTATCCCGCCCATGCTGGGCTGGCGCACCCCGAAGACCGCTCGGACCCCGACGCATG
CACCATTAGCAAGGATCATGGCTACACTATCTATTCCACCTTTGGAGCTTTCTACATCCCGCTGTGCTC
ATGCTGGTTCTCTATGGGCGCATATCCGAGCTGCGCGCTTCCGCATCCGCAAGACGGTCAAAAAGGTGG
AGAAGACCGGAGCGGACACCCGCCATGGAGCATCTCCCGCCCGCAGCCCAAGAAGAGTGTGAATGGAGA
GTCGGGGAGCAGGAAGTGGAGGCTGGGCGTGGAGAGCAAGGCTGGGGGTGCTCTGTGCGCCAATGGCGG
GTGAGGCAAGGTGACGATGGCGCCGCCCTGGAGGTGATCGAGGTGACCGAGTGGGCAACTCCAAGAGC
ACTTGCCTCTGCCAGCGAGGCTGGTCTTACCCTTGTGCCCGCCTTTTCGAGAGGAAAAATGAGCG
CAACGCCGAGGCGAAGCGCAAGATGGCCCTGGCCCGAGAGAGGAAGACAGTGAAGACGCTGGGCATCATC
ATGGGCACCTTATCCTCTGCTGGCTGCCCTTCTCATCGTGGCTCTTGTCTGCCCTTCTGCGAGAGCA
GCTGCCACATGCCACCCTGTTGGGCGCCATAATCAATTGGCTGGGCTACTCCAACCTCTGCTTAAACC
CGTCATTTACGCATACTCAACAAGGACTTTCAAACGCGTTTAAAGAAGATCATTAAAGTGAAGTTCTGC
CGCCAG

AGCGGACCGACGCGTACGCGGCCGCTCGAG - GFP Tag - GTTTAA



[View online »](#)

Protein Sequence: >RG218011 representing NM_000524
Red=Cloning site Green=Tags(s)

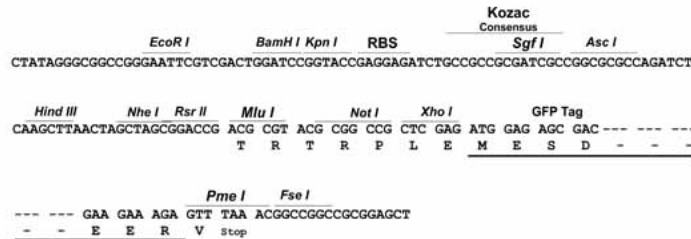
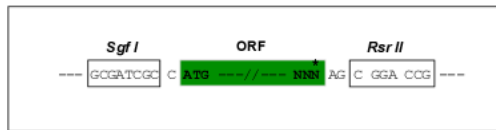
```
MDVLSPGQGNNTTSPAPFETGGNTTGISDVTVSYQVITSLLLGTLIFCAVLGNACVVAAIALERSLQNV
ANYLIGSLAVTDLMVSVLVLPMAALYQVLNKWTLGQVTCDFIALDVLCTSSILHLCAIALDRYWAITD
PIDYVNRTPRRAALISLTLWIGFLISIPPMLGWRTPEDRSDPDACTISKDHGYTIYSTFGAFYIPLLL
MLVLYGRIFRAARFIRIKTVKKVEKTGADTRHGASPAQPQKKSVMNGESGSRNRWLVESKAGGALCANGA
VRQGDDGAALVIEVHRVGNKEHLPLPSEAGPTPCAPASFERNERNAEAKRKMALARERKTVKTLGII
MGTFILCWLPPFIVALVLPFCESSCHMPTLLGAIINWLGYSNLLNPVIYAYFNKDFQNAFKKIICKKFC
RQ
```

SGPTRRRLE - GFP Tag - V

Restriction Sites: SgfI-RsrII

Cloning Scheme:

Cloning sites used for ORF Shuttling:



ACCN: NM_000524

ORF Size: 1266 bp

OTI Disclaimer: The molecular sequence of this clone aligns with the gene accession number as a point of reference only. However, individual transcript sequences of the same gene can differ through naturally occurring variations (e.g. polymorphisms), each with its own valid existence. This clone is substantially in agreement with the reference, but a complete review of all prevailing variants is recommended prior to use. [More info](#)

OTI Annotation: This clone was engineered to express the complete ORF with an expression tag. Expression varies depending on the nature of the gene.

Components: The ORF clone is ion-exchange column purified and shipped in a 2D barcoded Matrix tube containing 10ug of transfection-ready, dried plasmid DNA (reconstitute with 100 ul of water).

Reconstitution Method:

1. Centrifuge at 5,000xg for 5min.
2. Carefully open the tube and add 100ul of sterile water to dissolve the DNA.
3. Close the tube and incubate for 10 minutes at room temperature.
4. Briefly vortex the tube and then do a quick spin (less than 5000xg) to concentrate the liquid at the bottom.
5. Store the suspended plasmid at -20°C. The DNA is stable for at least one year from date of shipping when stored at -20°C.

RefSeq: [NM_000524.4](#)

RefSeq Size: 1269 bp

RefSeq ORF: 1269 bp

Locus ID: 3350

UniProt ID: [P08908](#)

Cytogenetics: 5q12.3

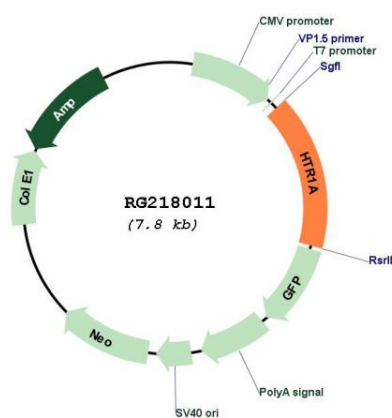
Domains: 7tm_1

Protein Families: Druggable Genome, GPCR, Transmembrane

Protein Pathways: Neuroactive ligand-receptor interaction

Gene Summary: This gene encodes a G protein-coupled receptor for 5-hydroxytryptamine (serotonin), and belongs to the 5-hydroxytryptamine receptor subfamily. Serotonin has been implicated in a number of physiologic processes and pathologic conditions. Inactivation of this gene in mice results in behavior consistent with an increased anxiety and stress response. Mutation in the promoter of this gene has been associated with menstrual cycle-dependent periodic fevers. [provided by RefSeq, Jun 2012]

Product images:



Circular map for RG218011