

Product datasheet for **RG218008**

TRPM3 (NM_020952) Human Tagged ORF Clone

Product data:

Product Type:	Expression Plasmids
Product Name:	TRPM3 (NM_020952) Human Tagged ORF Clone
Tag:	TurboGFP
Symbol:	TRPM3
Synonyms:	GON-2; LTRPC3; MLSN2
Mammalian Cell Selection:	Neomycin
Vector:	pCMV6-AC-GFP (PS100010)
E. coli Selection:	Ampicillin (100 ug/mL)
ORF Nucleotide Sequence:	>RG218008 representing NM_020952 Red=Cloning site Blue=ORF Green=Tags(s)

TTTTGTAATACGACTCACTATAGGGCGGCCGGAATTCGTCGACTGGATCCGGTACCGAGGAGATCTGCC
GCC**CGATCGCC**

ATGTATGTGCGAGTATCTTTTGATACAAAACCTGATCTCCTCTTACACCTGATGACCAAGGAATGGCAGT
TGGAGCTTCCCAAGCTTCTCATCTGTCCATGGGGCCGCAGAACTTTGAACTCCAGCCAAAACCTCAA
GCAAGTCTTTGGAAAGGGCTCATCAAAGCAGCAATGACAACCTGGAGCGTGGATATTCCTGGAGGGTT
AACACAGGTGTTATTCGTCATGTTGGCGATGCCTTGAAGGATCATGCCTCTAAGTCTCGAGGAAAGATAT
GCACCATAGGTATTGCCCTGGGAATTGTGGAAAACCAGGAGGACCTCATTGGAAGAGATGTTGTCCG
GCCATACCAGACCATGTCCAATCCCATGAGCAAGCTCACTGTTCTCAACAGCATGCATTCCCACTTCATT
CTGGCTGACAACGGGACCACTGGAAAATATGGAGCAGAGGTGAACTTCGAAGACAACCTGAAAAAGCATA
TTTCACTCCAGAAGATAAACACAAGAATCGGTCAAGGTGTTTCTGTGGTGGCACTCATAGTGAAGGAGG
ACCCAATGTGATCTCGATTGTTTGGAGTACCTTCGAGACACCCCTCCCGTGCCAGTGGTGTCTGTGAT
GGGAGTGGACGGGCATCGGACATCCTGGCCTTTGGGCATAAACTCAGAAGAAGGCGGACTGATAAATG
AATCTTTGAGGGACAGCTGTTGGTGACTATACAGAAGACTTTCACATACACTCGAACCAAGCTCAGCA
TCTGTTTCATCCTCATGGAGTGCATGAAGAAGAAGGAATTGATTACGGTATTTTCGGATGGGATCAGAA
GGACACCAGGACATTGATTTGGCTATCCTGACAGCTTTACTCAAAGGACCAATGCCTCGGCCCCAGACC
AACTGAGCTTAGCTTTAGCCTGGAACAGAGTCGACATCGCTCGCAGCCAGATCTTTATTTACGGGCAACA
GTGGCCGTTGGGATCTCTGGAGCAAGCCATGTTGGATGCCTTAGTCTCGACAGAGTGGATTTTGTGAAA
TTACTCATAGAGAATGGAGTAAGCATGCACCGTTTTCTCACCATCTCCAGACTAGAGGAATTGTACAATA
CGAGACATGGGCCCTCAAATACATTGTACCACTTGGTCAGGGATGTCAAAAAGGGGAACCTGCCCCAGA
CTACAGAATCAGCCTGATTGACATCGGCCTGGTATCGAGTACCTGATGGCGGGGCTTATCGTGCAAC
TACACGCGCAAGCGCTCCGGACCCTCTACCACAACCTCTCGGCCCAAGAGGCCCAAAGCCTTGAAC
TGCTGGGAATGGAGGATGATATCCCTTGAGGCGAGGAAGAAAGACAACCAAGAAACGTGAAGAAGAGGT
GGACATTGACTTGATGATCCTGAGATCAACCCTTCCCTTCCCTTCCATGAGCTCATGGTGTGGCT



[View online >](#)

GTTCTCATGAAGCGGCAGAAAGATGGCCCTGTTCTTCTGGCAGCACGGTGAGGAGGCCATGGCCAAGGCC
TGGTGGCCTGCAAGCTCTGCAAAGCCATGGCTCATGAGGCCTCTGAGAACGACATGGTTGACGACATTTCC
CCAGGAGCTGAATCACAATTCAGAGACTTTGGCCAGCTGGCTGTGGAGCTCCTGGACCAGTCTACAAG
CAGGACGAACAGCTGGCCATGAAACTGCTGACGTATGAGCTGAAGAACTGGAGCAACGCCACGTGCCTGC
AGCTTGCCGTGGCTGCCAAACACCGGACTTCATCGCGCACACGTGCAGCCAGATGCTGCTACCCGACAT
GTGGATGGGCCGGCTCCGCATGCGCAAGAACTCAGGCCTCAAGGTAATTTCTGGGAATTTCTACTTCCTCT
TCAATTCAGCTTGGAGTTCAAGAACAAGACGACATGCCCTATATGTCTCAGGCCAGGAAATCCACC
TCCAAGAGAAGGAGGCAGAAGAACCAGAGAAGCCACAAAGGAAAAAGAGGAAGAGGACATGGAGCTCAC
AGCAATGTTGGGACGAAACAACGGGAGTCTCCAGGAAGAAGGATGAAGAGGAAGTTCCAGAGCAAGCAC
CGGTTAATCCCCCTCGGCAGAAAAATCTATGAATTCACAATGCACCCATCGTGAAGTTCTGGTTTACA
CACTGGCGTATATCGGATACCTGATGCTCTTCAACTATATCGTGTAGTGAAGATGGAACGCTGGCCGTC
CACCCAGGAATGGATCGTAATCTCTATATTTTACCCTGGGAATAGAAAAGATGAGAGAGATTCTGATG
TCAGAGCCAGGAAGTTGCTACAGAAAGTGAAGGTATGGCTGCAGGAGTACTGGAATGTCACGGACCTCA
TCGCCATCCTTCTGTTTTCTGTCGGAATGATCCTTCGTCTCCAAGACCAGCCCTCAGGAGTGACGGGAG
GGTCATCTACTGGTGAACATCATTTACTGGTATATCCGTCTCCTAGACATCTTCGGCGTGAACAAGTAT
TTGGGCCCGTATGTAATGATGATTGAAAAATGATGATAGACATGATGACTTTGTCATCATTATGCTGG
TGTTCTGATGAGCTTTGGGGTCCGCAGGAAGCCATCCTTTTTCCCAATGAGGAGCCATCATGAAACT
GGCCAAGAACATCTTCTACATGCCCTATTGGATGATTTATGGGGAAGTGTGTCGGGACCAGATAGACCT
CCCTGTGGACAGAATGAGACCCGAGAGGATGGTAAAATAATCCAGCTGCCTCCCTGCAAGACAGGAGCTT
GGATCGTGCCGGCCATCATGGCTGCTACCTCTTAGTGGCAAACATCTTGCTGGTCAACCTCCTCATTGC
TGTCTTTAACAATACATTTTTGAAGTAAAATCGATATCCAACCAAGTCTGGAAGTTTCAGAGGTATCAG
CTCATCATGACTTTCCATGAAAGGCCAGTTCTGCCCCACCAGTATCATCTTCAGCCACATGACCATGAA
TATCCAGCACCTGTGCTGCCGATGGAGGAAACACGAGAGCGACCCGGATGAAAGGGATACGGCCTGAA
ACTCTTCATAACCGATGATGAGCTCAAGAAAGTACATGACTTTGAAAGCAATGCATAGAAGAATCTTC
AGAGAAAAGGATGATCGGTTCAACTCATTAATGATGAGAGGATACGGGTGACTTCAGAAAAGGTGGAGA
ACATGTCTATGCGGCTGGAGGAAGTCAACGAGAGAGAGCACTCCATGAAGGCTTCACTCCAGACCGTGG
CATCCGGCTGGCGCAGCTGGAAGACCTTATCGGGCGCATGGCCACGGCCCTGGAGCGCTGACAGGTCTG
GAGCGGGCCGAGTCCAACAAAATCCGCTCGAGGACCTCGTCAGACTGCACGGACGCCCTACATTTGTC
GTCAGAGCAGCTTCAACAGCCAGGAAGGGAACACCTTCAAGCTCCAAGAGAGTATAGACCCTGCAGGTGA
GGAGACCATGTCCCAACTTCTCCAACCTTAATGCCCGTATGCGAAGCCATTCTTTCTATTGCGTCAAT
ATGAAAGACAAAGGTGGTATAGAAAAGTTGAAAAGTATTTTTAAAGAAAGTCCCTGAGCCTACACCGGG
CTACTAGTTCCTACTCTGTAGCAAAAAGAACCAAGCTCCTGCAGCCCTGCCAACACCTTGCCATTGT
TCCTGATTCCAGAAGACCATCATCGTGTATAGACATCTATGTCTCTGCTATGGATGAGCTCCACTGTGAT
ATAGACCCTCTGGACAATTCCGTGAACATCCTTGGGCTAGGCGAGCCAAGCTTTTCAACTCCAGTACCTT
CCACAGCCCTTCAAGTAGTGCTATGCAACACTTGCACCCACAGACAGACCTCCAAGCCGGAGCATTGA
TTTTGAGGACATCACCTCCATGGACACTAGATCTTTTTCTTCCAGACTACACCCACCTCCAGAAATGCCAA
AACCCCTGGGACTCAGAGCCTCCGATGTACCACACCATGAGCGTTCCAAAAGTAGCCGCTACCTAGCCA
CCACACCTTTCTCTAGAAGAGGCTCCATTGTGAAATCTCATAGCTTTATGTTTTCCCTCAAGGAG
CTATTATGCCAACTTTGGGGTGCCTGTAAAAACAGCAGAATACACAAGTATTACAGACTGATTGACACA
AGGTGTGTCAATGCCCTCAAGCAATTGCGGACAGAGCTGCCTTCCCTGGAGGTCTTGAGACAAAAGTGG
AGGACTTAACTTGTGCCATCCAGAGCGAGAAGCAGAAGTGAAGTACCCAGCTCTGACAGTGAGGAGAA
TGAGGCCAAAAGCCGAGAGCCACCATTGCAATATCCTCCAGGAGGGTATAACTCAGAGAGAACCCTG
TCCAACAACATCACTGTTCCCAAGATAGAGCGCACAACAGCTACTCGGCAGAGGAGCCAAGTGCGCCAT
ATGCACACACCAGGAAGAGCTTCTCCATCAGTGACAAACTCGACAGGCAGCGGAACAGCAAGCCTGCG
AAATCCCTTCCAGAGAAGCAAGTCTCCAAGCCGAGGGCCGAGGGGACAGCCTGTCATGAGGAAACTG
TCCAGAACATCGGCTTTCCAAAGCTTTGAAAGCAAGCACACC

ACGCGTACGCGGCCGCTCGAG – GFP Tag – GTTTAA

Protein Sequence: >RG218008 representing NM_020952
 Red=Cloning site Green=Tags(s)

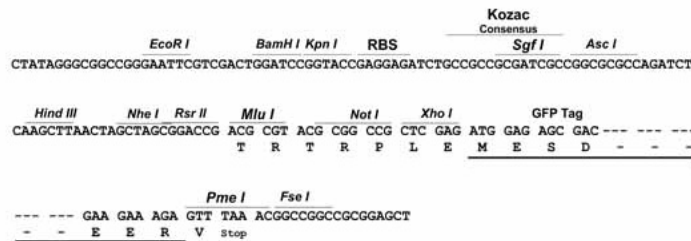
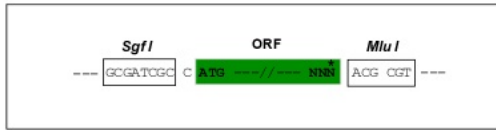
MYVRVSFDTKPDL LHLMTKEWQLELPKLLISVHGGLQNFELQPKLKQVFGKGLIKAAMTTGAWIFTGGV
 NTGVI R HVGDAL KD HASKSRGKI CTIGIAPWGI VENQEDL IGRDVVRPYQTMSNPMSKL TVLNSMHSHF I
 LADNGTTGKYGA EVKLRRQLEKHI SLQKINTRIGQGVVVALIVEGGPNVISIVLEYL RDTPPVV VVCD
 GSGRASDILAFGHKYSEEGGLINESLRDQLLVTIQKTFYTRTQAQHLFIILMECKKKELITVFRMGSE
 GHQDIDLAILTALLKGANASAPDQLSLALAWN RVDIARSQIFIYQQWPVGSLEQAML DALVLD RVDFVK
 LLIENGVS MHRFLTISRLEELYNTRHGPSNTLYHLVRDVKKGNLPPDYRISLIDIGLVIEYLMGGAYRCN
 YTRKRFR TLYHNLFGPKRPKALKLLGMEDDIPLRRGRKTTKKREEEVDIDLDDPEINHFPFPFHELMVWA
 VLMKRQK MALFFWQHGE EAMAKALVACKLCKAMAHEASENDM VDDISQELNHNSRDFGQLAVELLDQSYK
 QDEQLAMKLLTYELKNWSNATCLQAVAAKHRDFIAHTCSQMLL TDMWMGRLRMRKNSGLK VILGILLPP
 SILSLEFKNKDDMPYMSQAQEIHLQEKEAEEPEKPTKEKEEEDMELTAMLGRNNGESSRKKDEEEVQSKH
 RL I PLGRKIYEFYNAPIVKFWFYTLAYIGYLMFN YIVLVKMERWPSTQEWIVISYIFTLGI EKMR EILM
 SEP GKLLQKV VWLQEYWNVTDLIAILLF SVGMILRLQDQPPFRSDGRVIYCVNIIYWYIRLLDIFGVNKY
 LGPYVMMIGKMMIDMMYFVIIIMLVLM SFGVARQAILFPNEEPSWKLAKNIF YMPYWMIYGEV FADQIDP
 PCGQNETREDGKIIQLPPCKTGAWIVPAIMACYLLVANILLVNLIIAVFNNTFFEVKSI SNQVWKFOR YQ
 LIMTFHERPVLPPPLIIFSHMTMIFQHLCCRWRKHESDPDERDYGLKLFITDDELKKVHDFEEQCIEEYF
 REKDDRFNSSNDERIRVTSERVENMSMRLEE VNEREHSMKASLQTVDIRLAQLEDLIGRMATALERLTGL
 ERAESNKIRSRTSSDCTDAAYIVRQSSFN SQEGNTFKLQESIDPAGEETMSPTSP TLMPRMRSHSFYSVN
 MKDKGGIEKLESIFKERSLSLHRATSSHSVAKEPKAPAANTLAI VPDSRRPSSCIDIYVSAMDELHCD
 IDPLDNSVNILGLGEPFSFSTPVPSTAPSSSAYATLAPTRPPSRSIDFEDITSM DTRSFSSDYTHLPECQ
 NPWDSEPPMYHTIERSKSSRYLATTPFLLEEAPIVKSHSFMFSPRSYYANFGVPVKTA EYTSITDCIDT
 RCYNAPQAIADRAAFPGLGDKVEDLTCCHPERAE LSHPSSDSENEAKGRRATIAISSQEGDNSERTL
 SNNITVPKIERANSYSAEEPSAPYAHRKSF SISKLDQRNTASLRNPFQRSKSSKPEGRGDSL SMRKL
 SRTSAFQSFESKHT

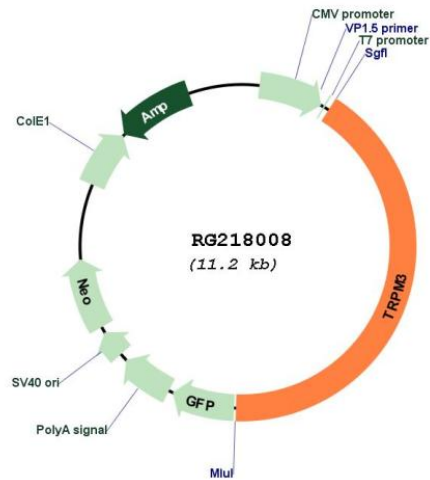
TRTRPLE - GFP Tag - V

Restriction Sites: SgfI-MluI

Cloning Scheme:

Cloning sites used for ORF Shuttling:



Plasmid Map:


ACCN: NM_020952

ORF Size: 5937 bp

OTI Disclaimer: The molecular sequence of this clone aligns with the gene accession number as a point of reference only. However, individual transcript sequences of the same gene can differ through naturally occurring variations (e.g. polymorphisms), each with its own valid existence. This clone is substantially in agreement with the reference, but a complete review of all prevailing variants is recommended prior to use. [More info](#)

OTI Annotation: This clone was engineered to express the complete ORF with an expression tag. Expression varies depending on the nature of the gene.

Components: The ORF clone is ion-exchange column purified and shipped in a 2D barcoded Matrix tube containing 10ug of transfection-ready, dried plasmid DNA (reconstitute with 100 ul of water).

Reconstitution Method:

1. Centrifuge at 5,000xg for 5min.
2. Carefully open the tube and add 100ul of sterile water to dissolve the DNA.
3. Close the tube and incubate for 10 minutes at room temperature.
4. Briefly vortex the tube and then do a quick spin (less than 5000xg) to concentrate the liquid at the bottom.
5. Store the suspended plasmid at -20°C. The DNA is stable for at least one year from date of shipping when stored at -20°C.

RefSeq:	<u>NM_020952.3, NP_066003.2</u>
RefSeq Size:	5941 bp
RefSeq ORF:	4665 bp
Locus ID:	80036
Cytogenetics:	9q21.12-q21.13
Protein Families:	Druggable Genome, Ion Channels: Transient receptor potential, Transmembrane
Gene Summary:	The product of this gene belongs to the family of transient receptor potential (TRP) channels. TRP channels are cation-selective channels important for cellular calcium signaling and homeostasis. The protein encoded by this gene mediates calcium entry, and this entry is potentiated by calcium store depletion. Alternatively spliced transcript variants encoding different isoforms have been identified. [provided by RefSeq, Jul 2008]