

Product datasheet for **RG218002**

CDX4 (NM_005193) Human Tagged ORF Clone

Product data:

Product Type: Expression Plasmids
 Product Name: CDX4 (NM_005193) Human Tagged ORF Clone
 Tag: TurboGFP
 Symbol: CDX4
 Mammalian Cell Selection: Neomycin
 Vector: pCMV6-AC-GFP (PS100010)
 E. coli Selection: Ampicillin (100 ug/mL)
 ORF Nucleotide Sequence: >RG218002 representing NM_005193
 Red=Cloning site Blue=ORF Green=Tags(s)

TTTTGTAATACGACTCACTATAGGGCGGCCGGAATTCGTCGACTGGATCCGGTACCGAGGAGATCTGCC
 GCC**CGATCGCC**

ATGTACGGAAGCTGTCTTTGGAGAAAGAAGCAGGCATGTACCCGGGCACTCTCATGAGCCCTGGGGCG
 ACGGCACAGCTGGGACAGGCGGCACAGGGGGCGGTGGGAGTCCGATGCCAGCCTCCAATTCGCTGCGGC
 ACCGGCTTTCTCGCACTATATGGGGTATCCTCATATGCCAGCATGGATCCTCACTGGCCGTCTCTGGGA
 GTCTGGGGCTCACCTACAGTCCCCCGGAGAAGACTGGAGCGTATCCTGGGCCGTCTAGTACAATGG
 GCACAGTGCCGGTGAACGACGTGACCTTAGCCCCGCGCTTTCTGCTCGACCGACTACAGCAACTTGGG
 CCCTGTGGCGGTGGAAGTAGCGGCAGCAGCCTACCAGGCCAGGCTGGCGGGTTCGCTTGTCCCGACGGAC
 GCAGGGCGCCGAAGGCCAGTTCCCCCAGCAGGAGCCGCCACAGCCCTATGCATGGATGCGCAAGACGG
 TGCAGGTGACGGGAAAACCAGGACAAAAGAAAAGTATCGTGTAGTTTACTGATCATCAAAGATTGGA
 GCTGAAAAGGAGTTCCATTGCAATAGATATATCACCATCCAGAGAAAATCAGAGCTGGCAGTTAACCTG
 GGCCTTCCGAGAGACAGGTGAAAATCTGGTTTCAGAATCGCAGAGCCAAGGAGAGAAAAGATGATCAAAA
 AGAAAATCTCCAGTTTGAAGTGTGGAGGCTCGGTGCAAAGTGACTCTGACTCCATCAGCCCTGGGGA
 ACTACCTAACACTTTTTTACCACACCATCTGCTGTTTCGTTGATTCAACCTATTGAGATACAGCAGGTT
 ATAGTCTCCGAA

ACGCGTACGCGGCCGCTCGAG - GFP Tag - GTTTAA



[View online »](#)

Protein Sequence: >RG218002 representing NM_005193
 Red=Cloning site Green=Tags(s)

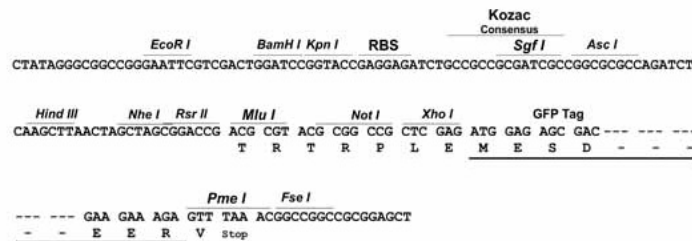
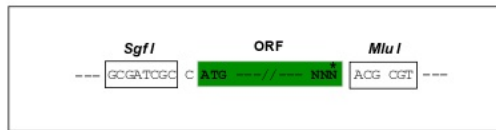
MYGSCLLEKEAGMYPGTLMSPPGGDTAGTGGTGGGGSPMPASNF AAAPAFSHYMGYPHMPMSDPHWPSLG
 VWGSPYSPREDWSVYPGPSSTMGTVPVNDVTSSPA AFCSTDYSNLGPVGGTSGSSLPGQAGGSLVPTD
 AGAAKASSPSRSRHSPIYAWMRKT VQVTGKTRTKEKYRVVYTDHQRL ELEKEFH CNRYITIQRKSELAVNL
 GLSERQVKIWFQNRRAKERKMIKKKISQFENS GGSVQSDSDSISP GELPNTFF TTPSAVRGFQPIEQQV
 IVSE

TRTRPLE - GFP Tag - V

Restriction Sites: SgfI-MluI

Cloning Scheme:

Cloning sites used for ORF Shutting:



ACCN: NM_005193

ORF Size: 852 bp

OTI Disclaimer: The molecular sequence of this clone aligns with the gene accession number as a point of reference only. However, individual transcript sequences of the same gene can differ through naturally occurring variations (e.g. polymorphisms), each with its own valid existence. This clone is substantially in agreement with the reference, but a complete review of all prevailing variants is recommended prior to use. [More info](#)

OTI Annotation: This clone was engineered to express the complete ORF with an expression tag. Expression varies depending on the nature of the gene.

Components: The ORF clone is ion-exchange column purified and shipped in a 2D barcoded Matrix tube containing 10ug of transfection-ready, dried plasmid DNA (reconstitute with 100 ul of water).

Reconstitution Method:

1. Centrifuge at 5,000xg for 5min.
2. Carefully open the tube and add 100ul of sterile water to dissolve the DNA.
3. Close the tube and incubate for 10 minutes at room temperature.
4. Briefly vortex the tube and then do a quick spin (less than 5000xg) to concentrate the liquid at the bottom.
5. Store the suspended plasmid at -20°C. The DNA is stable for at least one year from date of shipping when stored at -20°C.

RefSeq: [NM_005193.1](#), [NP_005184.1](#)

RefSeq Size: 855 bp

RefSeq ORF: 855 bp

Locus ID: 1046

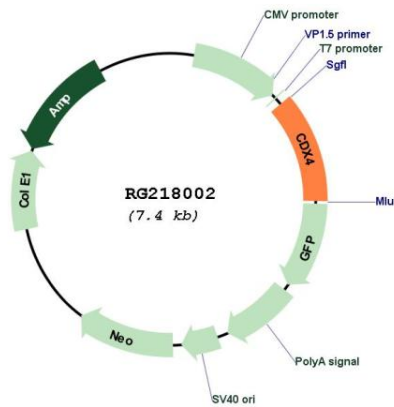
UniProt ID: [O14627](#)

Cytogenetics: Xq13.2

Protein Families: Druggable Genome, ES Cell Differentiation/IPS, Transcription Factors

Gene Summary: This gene encodes a member of a small subfamily of homeobox containing transcription factors. The encoded protein may regulate homeobox gene expression during anteroposterior patterning and hematopoiesis. [provided by RefSeq, Aug 2012]

Product images:



Circular map for RG218002