

## Product datasheet for **RG217996**

### **RAP1GDS1 (NM\_001100430) Human Tagged ORF Clone**

#### **Product data:**

Product Type:	Expression Plasmids
Product Name:	RAP1GDS1 (NM_001100430) Human Tagged ORF Clone
Tag:	TurboGFP
Symbol:	RAP1GDS1
Synonyms:	GDS1; SmgGDS
Mammalian Cell Selection:	Neomycin
Vector:	pCMV6-AC-GFP (PS100010)
E. coli Selection:	Ampicillin (100 ug/mL)



[View online »](#)

**ORF Nucleotide Sequence:**

>RG217996 representing NM\_001100430  
 Red=Cloning site Blue=ORF Green=Tags(s)

TTTTGTAATACGACTCACTATAGGGCGGCCGGAATTCGTCGACTGGATCCGGTACCGAGGAGATCTGCC  
 GCC**CGCATCGCC**

ATGGCAGATAATCTCAGTGATACCTTGAAGAAGCTGAAGATAACAGCTGTTGACAAGACTGAGGATAGTT  
 TAGAAGGATGCTTGGATTGTCTGCTTCAAGCCCTGGCTCAAAATAATACGGAAACAAGTAAAAAATCCA  
 AGCAAGTGAATACTTACAGCTGTTTGAAGTCTGTTGACTCCACAGTCTTCTGCAAGCCAAAAGTAGCT  
 AACATCATAGCAGAAGTAGCCAAAAATGAGTTTATGCGAATTCATGTGTGGATGCTGGATTGATTTAC  
 CACTGGTGCAGCTGCTAAATAGCAAAGACCAGGAAGTGTCTTCAAACGGGCAGGGCTCTAGGAAACAT  
 ATGTTACGATAGCCAGTCAAGTAAAGAACAGTTTGCAGTACAAACATTGCTGAAGAGCTAGTAAAACTC  
 TTCAAGAAACAAATAGAACATGATAAGAGAGAAATGATTTTTGAAGTTCTTGCTCCATTGGCAGAAAATG  
 ATGCTATTAACACAGCTGGTTGAAGCAGGCCTAGTAGAGTGTCTACTAGAGATTGTTCCAGAAAAAGT  
 GGATAGTGACAAAGAAGATGATATTACTGAGCTCAAACTGGTTCAGATCTCATGGTTTTATTACTTCTT  
 GGAGATGAATCCATGCAGAAGTTATTTGAAGGAGGAAAAGGTAGTGTATTTCAAAGGGTACTCTCTTGG  
 TCCCATCAATAACCACCAGCTACAGCTTGTGGAGCATTGGCAATTGCAATTTTGGCAGAAATGATGC  
 AAATTGTATTCATATGGTAGACAATGGGATTGTAGAAAACTTATGGATTTACTGGACAGACATGTAGAA  
 GATGGAATGTAACAGTACAGCATGCAGCACTAAGTGCCTCAGAAACCTGGCCATTCCAGTTATAAATA  
 AAGCAAAGATGTTATCAGCTGGGGTACAGAGGCAGTTTTGAAATTTCTTAAATCTGAAATGCCTCCTGT  
 TCAGTTCAAACCTCTGGGAACATTAAGAATGTTAATAGATGCACAAGCAGAAGCTGCTGAACAATTGGGA  
 AAGAATGTTAAGTTAGTGGAGCGTTTGGTGAATGGTGTGAAGCCAAAGATCATGCTGGTGTGATGGGG  
 AGTCAAACAGACTGCTGTCTGCCCTTACGACACAGTAAATCAAAGATGTAATTAACCATTGTGCA  
 GAGTGGTGGCATCAAGCATCTAGTTACCATGGCAACTAGTGAACATGTAATAATGCAGAATGAAGCTCTT  
 GTTGCTTTGGCATTAAATAGCAGCTTTAGAATTGGGCACTGCTGAGAAAAGTCTAGAAAAGTCTAAACTTG  
 TACAGATTTTACATAGACTGCTAGCAGATGAGAGAAGTGTCTCTGAAATCAAATAAATCCATGGTCTCT  
 GATATGTGCTCTTATGGGATCTGAATGTCTACACAAGGAAGTACAGGATTTGGCTTTTCTAGATGTCGTA  
 TCCAAACTTCGCAGTCATGAGAACAAAAGTGTGCCAGCAGGCCTCTCTCACAGAGCAGAGACTTACTG  
 TGGAAAGC

**ACGCGTACGCGGCCGCTCGAG** - GFP Tag - GTTTAA

**Protein Sequence:**

>RG217996 representing NM\_001100430  
 Red=Cloning site Green=Tags(s)

MADNLSDTLKKLKITAVDKTEDSLEGLDCLLQALAQNNTETSEKIQASGILQLFASLLTPQSSCKAKVA  
 NIIAEVAKNEFMRIPCVDAGLISPLVQLLNSKDQEVLLQTGRALGNICYDSQSSKEQFASTNIAEELVKL  
 FKKQIEHDKREMI FEVLAPLAENDAIKLQLVEAGLVECLLEIVQQKVDSDKEDDITELKTGSDLMVLLLL  
 GDESMQKLFEGGKGSVFQRVLSWIPSNHQLQLAGALAIANFARNDANCIHMVDNGIVEKLMDDLDRHVE  
 DGNVTVQHAALSALRNLAIPVINKAKMLSAGVTEAVLKFLKSEMPVQFKLLGTLRMLIDAQAEAAEQLG  
 KNVKLVERLVEWCEAKDHAGVMGESNRLLSALIRHSKSKDVIKTIVQSGGIKHLVTMATSEHVIMQNEAL  
 VALALIAALELGTAEKDLESACLQILHRL LADERSAPEIKYNSMVLICALMGSECLHKEVQDLAFLDVV  
 SKLRSHENKSVAAQASL TEQRLTVES

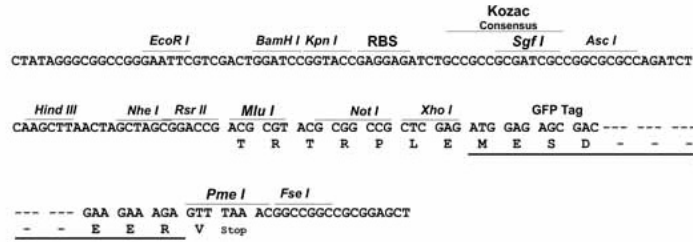
**TRTRPLE** - GFP Tag - V

**Restriction Sites:**

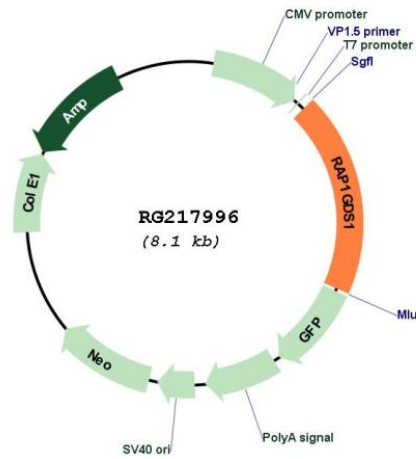
Sgfl-MluI

Cloning Scheme:

Cloning sites used for ORF Shutting:



Plasmid Map:



<b>ACCN:</b>	NM_001100430
<b>ORF Size:</b>	1548 bp
<b>OTI Disclaimer:</b>	The molecular sequence of this clone aligns with the gene accession number as a point of reference only. However, individual transcript sequences of the same gene can differ through naturally occurring variations (e.g. polymorphisms), each with its own valid existence. This clone is substantially in agreement with the reference, but a complete review of all prevailing variants is recommended prior to use. <a href="#">More info</a>
<b>OTI Annotation:</b>	This clone was engineered to express the complete ORF with an expression tag. Expression varies depending on the nature of the gene.
<b>Components:</b>	The ORF clone is ion-exchange column purified and shipped in a 2D barcoded Matrix tube containing 10ug of transfection-ready, dried plasmid DNA (reconstitute with 100 ul of water).
<b>Reconstitution Method:</b>	<ol style="list-style-type: none"><li>1. Centrifuge at 5,000xg for 5min.</li><li>2. Carefully open the tube and add 100ul of sterile water to dissolve the DNA.</li><li>3. Close the tube and incubate for 10 minutes at room temperature.</li><li>4. Briefly vortex the tube and then do a quick spin (less than 5000xg) to concentrate the liquid at the bottom.</li><li>5. Store the suspended plasmid at -20°C. The DNA is stable for at least one year from date of shipping when stored at -20°C.</li></ol>
<b>RefSeq:</b>	<a href="#">NM_001100430.2</a>
<b>RefSeq Size:</b>	3494 bp
<b>RefSeq ORF:</b>	1551 bp
<b>Locus ID:</b>	5910
<b>UniProt ID:</b>	<a href="#">P52306</a>
<b>Cytogenetics:</b>	4q23
<b>Gene Summary:</b>	The smg GDP dissociation stimulator (smgGDS) protein is a stimulatory GDP/GTP exchange protein with GTPase activity (Riess et al., 1993 [PubMed 8262526]).[supplied by OMIM, Feb 2010]