

Product datasheet for **RG217990**

SCFD1 (NM_016106) Human Tagged ORF Clone

Product data:

Product Type:	Expression Plasmids
Product Name:	SCFD1 (NM_016106) Human Tagged ORF Clone
Tag:	TurboGFP
Symbol:	SCFD1
Synonyms:	C14orf163; RA410; SLY1; SLY1P; STXBP1L2
Mammalian Cell Selection:	Neomycin
Vector:	pCMV6-AC-GFP (PS100010)
E. coli Selection:	Ampicillin (100 ug/mL)



[View online »](#)

ORF Nucleotide Sequence:

>RG217990 representing NM_016106
 Red=Cloning site Blue=ORF Green=Tags(s)

TTTTGTAATACGACTCACTATAGGGCGGCCGGGAATTCGTCGACTGGATCCGGTACCGAGGAGATCTGCC
 GCC**GCGATCGCC**

ATGGCGGCGGCGGCCGACGACAGCAGCAGCAGCCAGTATTCGGGAAAGGCAGACAGTGGCTTTGA
 AGCGTATGTTGAATTTCAATGTGCCTCATATTAACACAGCACAGGAGAACCAGTATGGAAGGTACTCAT
 TTATGACAGATTTGGCCAAGATATAATCTCTCCTCTGCTATCTGTGAAGGAGCTAAGAGACATGGGAATC
 ACTCTGCATCTGCTTTTACACTCTGATCGAGATCCTATCCAGATGTTCTCGAGTATACTTTGTAATGC
 CAACTGAAGAAAAATTGACAGAATGTCCAGGATCTTCGAAATCAACTATATGAATCATATTATTTAAA
 TTTTATTTCTGCTATTTCAAGAAGTAACTGGAAGATATTGCAATGCAGCGTTAGCAGCTAGTGCAGTA
 ACACAAGTAGCCAAGGTTTTGACCAATATCTCAATTTTATTACTTTGGAAGATGATATGTTGTATTAT
 GTAATCAAATAAGGAGCTTGTTCATATCGTGCCATTAACAGGCCAGATATCACAGACACGGAAATGGA
 AACTGTTATGGACACTATAGTTGACAGCCTCTTCTGCTTTTTTGTACTCTGGGTCTGTTCTATAATC
 AGATGTTCAAGAGGAACAGCAGCAGAAATGGTAGCAGTAACTAGACAAGAACTTCGAGAAAACTAA
 GAGATGCAAGAAACAGTCTTTTTACAGGTGATACACTTGAGCTGGCCAATTCAGCTCCAGAGGCCCTT
 ATTAGTCTTGTGACAGAAACATAGATTTGGCAACTCCTTTACATCACTTGGACATATCAAGCATTG
 GTGCACGATGACTGGATTTCCATTTAAACAGGGTTAATTTGGAAGAATCTTCAGGAGTGGAAAACCTC
 CAGCTGGTGCTAGACCAAGAGAAAAACAAGAAGTCTTATGATTTAACTCCGGTTGATAAATTTGGCA
 AAAACATAAAGGAAGTCCATCCCAGAAGTGCAGAATCAGTTCAGCAAGAACTAGAATCTTACAGAGCA
 CAGGAAGATGAGGTCAAACGACTTAAAGCATTATGGGACTAGAAGGGGAAGATGAAGGAGCCATAAGTA
 TGCTTTCTGACAATACCGCTAAGCTAACATCAGCTGTTAGTTCTTTGCCAGAACTCCTTGAGAAAAAAG
 ACTTATTGATCTCCATACAAATGTTGCCACTGCTGTTTTAGAACATATAAAGGCAAGAAAATTGGATGTA
 TATTTTGAATATGAAGAAAAAATAATGAGCAAACTACTCTGGATAAATCTCTTCTAGATATAATATCAG
 ACCCTGATGCAGGAACCCAGAAGATAAAATGAGGTTGTTTCTTATCTATTATATAAGCACACAGCAAGC
 ACCTTCTGAGGCTGATTTGGAGCAATATAAAAAAGCTTTAACTGATGCAGGATGCAACCTTAATCCTTTA
 CAATATATCAAACAGTGGAAAGGCTTTTACCAAGATGGCCTCAGCTCCGGCCAGCTATGGCAGCACTACCA
 CTAACCAATGGGTCTTTATCACGAGTCATGAATACAGGATCACAGTTTGTGATGGAAGGAGTGAAGAA
 CCTGTTTTGAAACAGCAAAATCTACCTGTTACTCGATTTTGGACAATCTTATGGAGATGAAGTCAAAC
 CCCGAACTGATGACTATAGATATTTGATCCCAAATGCTGCGGGCAATGACAGCTCAGTCCCAGAA
 ATAAAAATCCATTCCAAGAGGCCATTGTTTTGTGGTGGGAGGAGGCAACTACATTGAATATCAGAACT
 TGGTACTACATAAAGGGGAAACAAGGCAACACATTTTATATGGCTGCAGTGAAGCTTTTAAATGCTACA
 CAGTTCATAAAACAGTTGTCACAACCTGGACAAAAG

ACGCGTACGCGGCCGCTCGAG - GFP Tag - GTTTAA

Protein Sequence:

>RG217990 representing NM_016106
 Red=Cloning site Green=Tags(s)

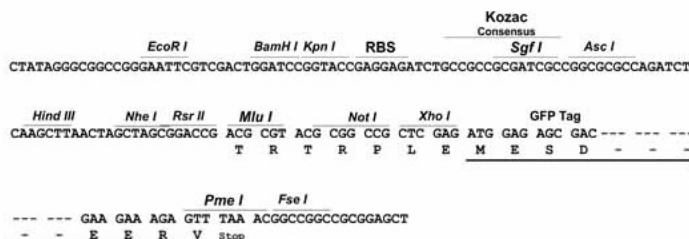
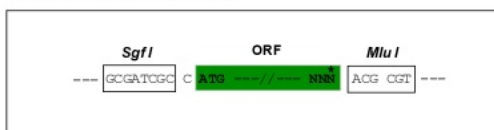
MAAAAAATAAAASIRERQTVALKRMLNFNPHIKNSTGEPVWKVLIYDRFGQDIISPLLSVKELRDMGI
 TLHLLLHSDRDPIDVPAVYFVMPTEENIDRMCQDLRNQLYESYLNFI SAISRKLEDIANAALAAASAV
 TQVAKVFDQYLNFI TLEDDMFVLCNQNKELVSYRAINRPDITDTEMETVMDTIVDSLFCFFVTLGAVPII
 RCSRGTAEMVAVKLDKCLRNLDRNSLFTGDTL GAGQFSFQRPLLVLVDRNIDLATPLHHTWTYQAL
 VHDVLDVDFHLNRVNLEESSGVENSPAGARPKRKNKSYDLTPVDKFWQKHKGSPFPEVAESVQQELESYRA
 QEDEVKRLKSI MGLEGEDEGAISMLSDNTAKLTS AVSSLP ELLKRLIDLHTNVATAVLEHIKARKLDV
 YFEYEEKIMSKTTLDKSLLDIISDPDAGTPEDKMRLFLIYYISTQQAPSEADLEQYKALTDAGCNLNPL
 QYIKQWKAFTKMASAPASYGSTTTKPMGLLSRVMTGSQFVMEGVKNLVLKQQLPVTRILDNLMEMKSN
 PETDDYRYFDPKMLRGNDSVPRNKNPFQEAIVFVGGGNYIEYQNLVDYIKGKQGHILYGCSELFNAT
 QFIKQLSQLGQK

TRTRPLE - GFP Tag - V

Restriction Sites: SgfI-MluI

Cloning Scheme:

Cloning sites used for ORF Shutting:



ACCN: NM_016106

ORF Size: 1926 bp

OTI Disclaimer: The molecular sequence of this clone aligns with the gene accession number as a point of reference only. However, individual transcript sequences of the same gene can differ through naturally occurring variations (e.g. polymorphisms), each with its own valid existence. This clone is substantially in agreement with the reference, but a complete review of all prevailing variants is recommended prior to use. [More info](#)

OTI Annotation: This clone was engineered to express the complete ORF with an expression tag. Expression varies depending on the nature of the gene.

Components: The ORF clone is ion-exchange column purified and shipped in a 2D barcoded Matrix tube containing 10ug of transfection-ready, dried plasmid DNA (reconstitute with 100 ul of water).

Reconstitution Method:

1. Centrifuge at 5,000xg for 5min.
2. Carefully open the tube and add 100ul of sterile water to dissolve the DNA.
3. Close the tube and incubate for 10 minutes at room temperature.
4. Briefly vortex the tube and then do a quick spin (less than 5000xg) to concentrate the liquid at the bottom.
5. Store the suspended plasmid at -20°C. The DNA is stable for at least one year from date of shipping when stored at -20°C.

RefSeq: [NM_016106.4](#)

RefSeq Size: 2172 bp

RefSeq ORF: 1929 bp

Locus ID: 23256

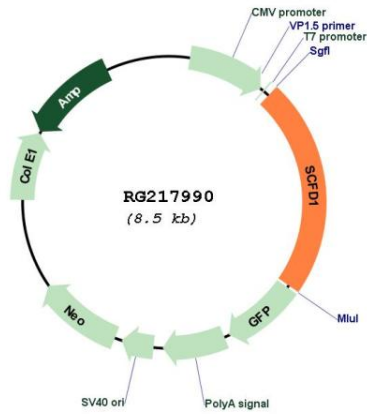
UniProt ID: [Q8WVM8](#)

Cytogenetics: 14q12

Domains: Sec1

Gene Summary: Plays a role in SNARE-pin assembly and Golgi-to-ER retrograde transport via its interaction with COG4. Involved in vesicular transport between the endoplasmic reticulum and the Golgi (By similarity).[UniProtKB/Swiss-Prot Function]

Product images:



Circular map for RG217990