

Product datasheet for **RG217979**

ASAP1 (NM_018482) Human Tagged ORF Clone

Product data:

Product Type:	Expression Plasmids
Product Name:	ASAP1 (NM_018482) Human Tagged ORF Clone
Tag:	TurboGFP
Symbol:	ASAP1
Synonyms:	AMAP1; CENTB4; DDEF1; PAG2; PAP; ZG14P
Mammalian Cell Selection:	Neomycin
Vector:	pCMV6-AC-GFP (PS100010)
E. coli Selection:	Ampicillin (100 ug/mL)
ORF Nucleotide Sequence:	>RG217979 representing NM_018482 Red=Cloning site Blue=ORF Green=Tags(s)

TTTTGTAATACGACTCACTATAGGGCGGCCGGAATTCGTCGACTGGATCCGGTACCGAGGAGATCTGCC
GCC**CGATCGCC**

ATGAGATCTTCAGCCTCCAGGCTCTCCAGTTTTTCGTCGAGAGATTCACTATGGAATCGGATGCCGGACC
AGATCTCTGTCTCGAGTTCATCGCCGAGACCACCGAGGACTACAACCGCCACCACGTCCAGTTCAC
CACGGCTGCACAACCTGCAGGAACACCGTCACGCTGCTGGAGGAGGCTCTAGACCAAGATAGAACAGCC
CTTCAGAAAGTGAAGAAGTCTGTAAAAGCAATATAAATCTGGTCAAGATCATGTACAAAATGAAGAAA
ACTATGCACAAGTCTTGATAAGTTGGGAGTAATTTTTAAGTCGAGACAACCCCGACCTTGGCACCAGC
GTTTGTCAAGTTTTCTACTCTTACAAAGGAAGTCCACACTGCTGAAAAATCTGCTCCAGGTTTTGAGC
CACAATGTGATCTTACCTTGGATTCTTTGTTAAAAGGAGACCTAAAGGGAGTCAAAGGAGATCTCAAGA
AGCCATTTGACAAAGCCTGGAAAGATTATGAGACAAAGTTTACAAAAATTGAGAAAAGAGAAAAGAGAGCA
CGCAAAAACAATGGGATGATCCGCACAGAGATAACAGGAGCTGAGATTGCGGAAGAAAATGGAGAAGGAA
AGGCGCTCTTTCAGCTCCAATGTGTGAATATCTCATTAAAGTTAATGAAATCAAGACCAAAAAGGGTG
TGGATCTGCTGCAGAATCTTATAAAGTATTACCATGCACAGTGAATTTCTTCAAGATGGCTTAAAAAC
AGCTGATAAGTTGAAACAGTACATTGAAAACTGGCTGCTGATTTATATAATATAAAACAGACCCAGGAT
GAAGAAAAGAAACAGCTAACTGCACCTCCGAGACTTAATAAACTCTCTTCACTGGATCAGAAAAGAA
ATTCTCAGAGCCGCAAGGAGGATACAGCATGCATCAGCTCCAGGCAATAAGGAATATGGCAGTAAAA
GAAGGGGTACCTGCTAAAGAAAAGTGACGGGATCCGAAAAGTATGGCAGAGGAGGAAGTGTTCAGTCAAG
AATGGGATTCTGACCATCTCACATGCCACATCTAACAGGCAACCAGCAGTTGAACCTTCTCACCTGCC
AAGTAAAACCTAATGCCGAAGACAAAAATCTTTGACCTGATATCACATAATAGAACATATCACTTTCA
GGCAGAAGATGAGCAGGATTATGTAGCATGGATATCAGTATTGACAAATAGCAAAGAAGAGGCCCTAAC
ATGGCCTCCGTGGAGAGCAGAGTGCGGGAGAGAACAGCCTGGAAGACCTGACAAAAGCCATTATTGAGG
ATGTCCAGCGGCTCCAGGGAATGACATTTGCTGCGATTGTGGCTCATCAGAACCACCTGGCTTCAAC
CAACTGGGATTTTACCTGTATAGAATGTTCTGGCATCCATAGGGAATGGGGTTTCATATTTCTCGC



[View online »](#)

ATTCAGTCTTTGGAAGTACAGCAAATTAGGAACTTCTGAACTCTTCTGCTGGCCAAGAATGTAGGAAACAATA
 GTTTTAATGATATTATGGAAGCAAATTTACCCAGCCCCTACCAAACCCACCCCTTCAAGTGATATGAC
 TGTACGAAAAGAAATATACACTGCAAAGTATGTAGATCATAGGTTTTCAAGGAAGACCTGTTCAACTTCA
 TCAGCTAAACTAAATGAATTGCTTGAGGCCATCAAATCCAGGGATTTACTTGCACATATCAAGTCTATG
 CAGAAGGGGTAGAGCTAATGGAACCACTGCTGGAACCTGGGCAGGAGCTTGGGGAGACAGCCCTCACCT
 TGCCGTCGGAAGTGCAGATCAGACATCTCTCCATTTGGTTGACTTCCTTGTACAAAACCTGTGGGAACCTG
 GATAAGCAGACGGCCCTGGGAAACACAGTCTACACTACTGTAGTATGTACAGTAAACCTGAGTGTGTTGA
 AGCTTTTCTCAGGAGCAAGCCCACTGTGGATATAGTTAACCAGGCTGGAGAAAACCTGCCCTAGACATAGC
 AAAGAGACTAAAAGCTACCCAGTGTGAAGATCTGCTTTCCAGGCTAAATCTGGAAAAGTTCAATCCACAC
 GTCCACGTAGAATATGAGTGAATCTTCGACAGGAGGAGATAGATGAGAGCGATGATGATCTGGATGACA
 AACCAAGCCCTATCAAGAAAGAGCGCTCACCCAGACCTCAGAGCTTCTGCCACTCTCCAGCATCTCCCC
 CCAGGACAAGCTGGCACTGCCAGGATTCAGCACTCCAAGGGACAAACAGCGGCTCTCCTATGGAGCCTTC
 ACCAACCCAGATCTTCGTTTCCACAAGCACAGACTCGCCACATACCAACCACGGAGGCTCCCCCTCTGC
 CTCCTAGGAACGCCGGAAAGGTCCAACCTGGCCACCTTCAACACTCCCTCTAAGCACCCAGACCTCTAG
 TGGCAGCTCCACCCTATCCAAGAAGAGGCTCCTCCCCACCACCCGGACACAAGAGAACCCTATCCGAC
 CCTCCCAGCCCCTACCTCATGGCCCCAAACAAAGGCCGAGTTCCTTGGGGTAAACGATGGGGTCCAT
 CCTCTTCAAGTAAGACTACAAACAAGTTTGAAGGACTATCCCAGCAGTCCAGCACCAGTTCGCAAAGAC
 TGCCCTTGGCCCAAGAGTTCTTCTAAACTACCTCAGAAAGTGGCACTAAGGAAAACAGATCATCTCTCC
 CTAGACAAAGCCACCATCCCGCCGAAATCTTTCAGAAATCATCACAGTTGGCAGAGTTGCCACAAAAGC
 CACCACCTGGAGACCTGCCCCAAAGCCACAGAACTGGCCCCAAGCCCCAAATTTGGAGATTTGCCGCC
 TAAGCCAGGAGAAGTCCCCCAAAACCACAGCTGGGGGACCTGCCACCAACCCCAACTCTCAGACTTA
 CCTCCAAACCCACAGATGAAGGACCTGCCCCAAACCCACAGCTGGGAGACCTGCTAGCAAAATCCAGA
 CTGGAGATGTCTACCCAAGGCTCAGCAACCTCTGAGGTACACTGAAGTCACACCCATGGATCTATC
 CCCAAATGTGCAGTCCAGAGACGCCATCCAAAAGCAAGCATCTGAAGACTCCAACGACCTCACGCCTACT
 CTGCCAGAGACGCCCGTACCCTGCCCAGAAAAATCAATACGGGGAAAAATAAAGTGAGGCGAGTGAAGA
 CCATTTATGACTGCCAGGACAGACAACGATGACGAGCTCACATTATCGAGGGAGAAGTATTATCGTAC
 AGGGGAAGAGGACCAGGAGTGGTGGATTGGCCACATCGAAGGACAGCCTGAAAGGAAGGGGTCTTTCCA
 GTGTCCTTTGTTTCATATCTGTCTGAC

ACGCGTACGCGGCCGCTCGAG - GFP Tag - GTTTAA

Protein Sequence:

>RG217979 representing NM_018482
 Red=Cloning site Green=Tags(s)

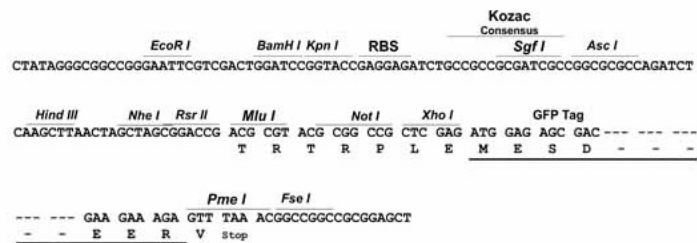
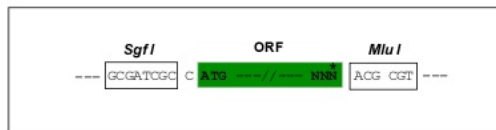
MRSSASRLSSFSSRDSLWNRMPDQISVSEFIAETTEDYNSPTTSSFTTRLHNCRNTVTLLEEALDQDRTA
 LQKVKKSVKAIYNSGQDQHVQNEENYAQVLDKFGSNFLSRDNPDLGTAFAVKFSTLTKELSTLLKNLLQGLS
 HNVIFTLDSLKGDLLKGVKGDLLKPFDKAWKDYETKFTKIEKEKREHAKQHGMIRTEITGAEIAEEMEKE
 RRLFQLQMC EYLKVN EIKTKKGV D LLQNL IKY YHAQC NFFQDGLKTADK LKQYIEKLAADLYNIKQTQD
 EEKQLTALRDLIKSSLQLDQKEDSQSRQGGYSMHQLQGNKEYGSEKKG YLLKKS DGIKRVWQRKCSVK
 NGILTISHATSNRQPAKLNLLTCQVKPNAEDKKSFDLISHNRTYHFQAEDEQDYVAWISVL TNSKEEALT
 MAFRGEQSAGENSLEDLTKAIIEDVQRLPGNDICDCGSSEPTW LSTNLGILTCIECSGIHREM GVHISR
 IQSLELDKLGTS ELLAKNVGNNSFN DIMEANL PSPSPKPTPSSDMTVRKEYITAKYVDHRFSRKT CSTS
 SAKLNELLEAIKSRDLLALIQVYAEGVELMEPLLEPGQELGETALHLAVRTADQTS LHLVDFLVQNCGNL
 DKQ TALGNTVLHYCSMYSKPECLKLLLRSKPTVDIVNQA GETALDI AKRLKATQCEDLLSQA KSGKFNPH
 VHVEYEWNL RQEE IDESDDDLDKPSPIK KERSPRPQSFCHSSSI SPQDKLALPGFSTPRDKQRLSYGAF
 TNQIFVSTSDSPTSPTEAPPLPRNAGK GPTGPPSTLPLSTQTSSGSSTLSKKRPPPPPPGHKRTLSD
 PPSPLPHGPPNKGA VPWGN DGGPSSSKTTNKFEGLSQQSSTSSAKTALGPRVLPKLPQKVALRKT D HLS
 LDKATIPPEIFQKSSQLAELPQKPPPGDLPPKPTELAPKQIGDLPPKPGELPPKQLGDLPPKQ LSDL
 PPKPQMKDLPPKQ L GDL LAKSQTGDVSPKAQQPSEVTLKSHPLDLSPNVQSRDAIQKQASEDSNDLTPT
 LPETPVPLPRKINTGKNKVRVKTIYDCQADNDELTFIEGEVIIVTGEEDQEWVIGHIEGQPERKGVFP
 VSFVHILSD

TRTRPLE - GFP Tag - V

Restriction Sites: SgfI-MluI

Cloning Scheme:

Cloning sites used for ORF Shuttling:



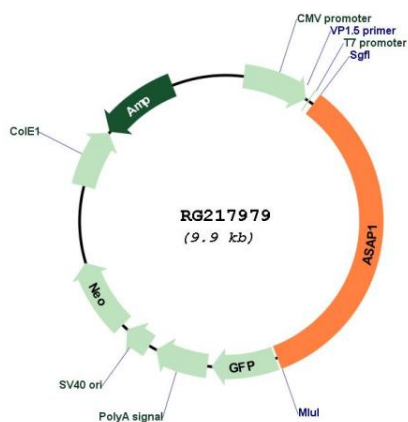
ACCN: NM_018482

ORF Size: 3387 bp

OTI Disclaimer: The molecular sequence of this clone aligns with the gene accession number as a point of reference only. However, individual transcript sequences of the same gene can differ through naturally occurring variations (e.g. polymorphisms), each with its own valid existence. This clone is substantially in agreement with the reference, but a complete review of all prevailing variants is recommended prior to use. [More info](#)

OTI Annotation:	This clone was engineered to express the complete ORF with an expression tag. Expression varies depending on the nature of the gene.
Components:	The ORF clone is ion-exchange column purified and shipped in a 2D barcoded Matrix tube containing 10ug of transfection-ready, dried plasmid DNA (reconstitute with 100 ul of water).
Reconstitution Method:	<ol style="list-style-type: none"> 1. Centrifuge at 5,000xg for 5min. 2. Carefully open the tube and add 100ul of sterile water to dissolve the DNA. 3. Close the tube and incubate for 10 minutes at room temperature. 4. Briefly vortex the tube and then do a quick spin (less than 5000xg) to concentrate the liquid at the bottom. 5. Store the suspended plasmid at -20°C. The DNA is stable for at least one year from date of shipping when stored at -20°C.
RefSeq:	<u>NM_018482.4</u>
RefSeq Size:	6042 bp
RefSeq ORF:	3390 bp
Locus ID:	50807
UniProt ID:	<u>Q9ULH1</u>
Cytogenetics:	8q24.21-q24.22
Protein Pathways:	Endocytosis, Fc gamma R-mediated phagocytosis
Gene Summary:	This gene encodes an ADP-ribosylation factor (ARF) GTPase-activating protein. The GTPase-activating activity is stimulated by phosphatidylinositol 4,5-biphosphate (PIP2), and is greater towards ARF1 and ARF5, and lesser for ARF6. This gene maybe involved in regulation of membrane trafficking and cytoskeleton remodeling. Alternatively spliced transcript variants encoding different isoforms have been found for this gene. [provided by RefSeq, Oct 2011]

Product images:



Circular map for RG217979