

## Product datasheet for **RG217975**

### **STON1 (NM\_006873) Human Tagged ORF Clone**

#### **Product data:**

Product Type:	Expression Plasmids
Product Name:	STON1 (NM_006873) Human Tagged ORF Clone
Tag:	TurboGFP
Symbol:	STON1
Synonyms:	SALF; SBLF; STN1; STNB1
Mammalian Cell Selection:	Neomycin
Vector:	pCMV6-AC-GFP (PS100010)
E. coli Selection:	Ampicillin (100 ug/mL)



[View online »](#)

ORF Nucleotide  
Sequence:

>RG217975 representing NM\_006873  
Red=Cloning site Blue=ORF Green=Tags(s)

TTTTGTAATACGACTCACTATAGGGCGGCCGGAATTCGTCGACTGGATCCGGTACCGAGGAGATCTGCC  
GCCGCGATCGCC

ATGTGCTCCACAATCCAGGCAATGGGTCACCTTTGATGATGATCCTGTCTTCAATCTTCTCAAAGT  
CAAAGAATTTTCTCTGGAGAATCAAGGTGTCTGTAGACCAAATGGACTGAAGCTGAACCTTCTGGCCT  
CAGGGAATTTCCAGTGGATCTTCTCCACCAGCAGCACTCCTCTCTCTCCCCCAATTGTAGATTTTAT  
TTCAGTCCAGGACCTCCAAGTAACTCTCTCTTTCTACACCTACCAAAGACTTCCAGGTTTTCTGGCA  
TCCCCAAAGCAGGGACTCATGTGCTTTATCCTATTCCAGAATCATCTTCAGACAGCCCACTCGCAATATC  
AGGAGGAGAATCTTCTTACTGCCTACCAGACCAACATGTTTATCCCATGCCTGTTACCCAGTGACCAC  
TCATGTACACATCCAACCCCAAAGTAGGTCTCCAGATGAAGTTAATCCTCAACAGGCTGAAAGCCTAG  
GATTCCAAAGTGATGATCTCCCCAGTTTCAGTATTTTCGAGAGGACTGTGCTTTTTCAAGTCCATTTTG  
GAAAGATGAAGGCAGTGATTCCCATTTCCCTTGACCCACCAGGAAGCAAAAAGATGTTCTCATCAAGA  
AACAAAGGAGATGCCTATTGACCAAAAAAGCCTAAATAAGTGTTCACTCAACTATATCTGTGAGAAGCTTG  
AACATCTCCAGTCAGCTGAGAACCAAGACTCACTTAGAAGTTTGTCTATGCACTGTCTATGTGCTGAAGA  
AAATGCCTCTTCTTTGTCCCCACACTCTTCCAGGAGTCAGCCAAAATCCGGATGGTCTTTCATGCTG  
AGAATTCCTGAGAAGAAGAATATGATGTCTTCCCGCAATGGGGACCAATTTTTCTGAAAGTTTTGCCTG  
GAGGAATTTTGCAGATGATTATGAACAGGGATTAGAAAAACATTTAAAGAGATACAGCTTGATCCATA  
TTGTAGCTTTTGAACCAAGTTGAGAACTTCAGTGTAGCAGGAAAAATCCCACTGTGAAGATTGAA  
CATGTGCTTACACAGAAAAAGGAAATACCATTCTAAGACAGAAGTAGTTCATGAACCTGACATAGAGC  
AGATGCTGAAGTTGGGGTCCACATCGTACCATGACTTCTTGTACTTCTGACTACTGTGGAGGAGGACT  
GATGAAGTTGCCAGCTGTTTCAAACCAAAAAAGAACTACGAGGAGCAAGAAATTTCTTGAAATTTGTG  
GACAACTTTTGGGGTAAAGTCAAAAAAGGAAAATTTGTTGAAAGTGCTGTGATAACTCAAATGTATT  
GCCTCTGCTTTGTGAATGGGAACCTGGAATGCTTTTTAACCTTGAATGACCTTGAGTTGCCGAAGCGAGA  
TGAATCTATTATGAGAAGGACTCAGAAAAAAGGGGATTGATATTCTTGACTACCATTTTCATAAGTGT  
GTGAATGTACAAGAATTTGAGCAATCAAGAATCATTAAGTTTGTACCTCTGGATGCCTGCCGTTTGAGC  
TGATGCGTTTCAAGACTTTGTATAATGGGATAATCTTCCCTTTTCTTGAAGTCTGTAGTGGTTGTCCA  
GGGAGCATACGTGGAACCTCAGGCTTTTGTCAACATGGCCTCATTGGCGCAGAGGTCATCCTATGCTGGT  
TCCTTAAGGTCTGTGACAATATAAGGATACACTTTCCTGTCCCATCGCAGTGGATCAAGGCCCTTTGGA  
CCATGAACCTCCAGAGGCAAGTCTCTGAAAGCTAAAATGAACCGCCGAGCATGTCTGGGGAGTTTACA  
GGAACCTGAATCTGAACCTGTCAATTCAAGTCACTGTGGGGTCAGCAAAATATGAGAGTGCCTACCAGGCA  
GTGGTATGGAAGATAGATCGGCTTCCAGACAAAAATCAAGTCTAGATCATCCCCATTGTCTGTCAACA  
AATTAGAGCTTGGATCAGACCAAGAAATTCCTCTGATTGGTATCCATTTGCTACTGTTCAGTTTTCCGT  
GCCTGACACCTGTGCCTCAAGGACAGAGGTCAGGTCTCTGGGAGTGGAGAGTGATGTCCAGCCACAGAAA  
CATGTTTCAGCAGCGAGCTTGCTACAACATCCAGGTTGAAATAGAAAAAAGTGGATTAATTCGATGGAG  
AAGACCCAGATAAAATTTGGTGACTGCATAACTCAG

ACGCGTACGCGGCCGCTCGAG - GFP Tag - GTTTAA

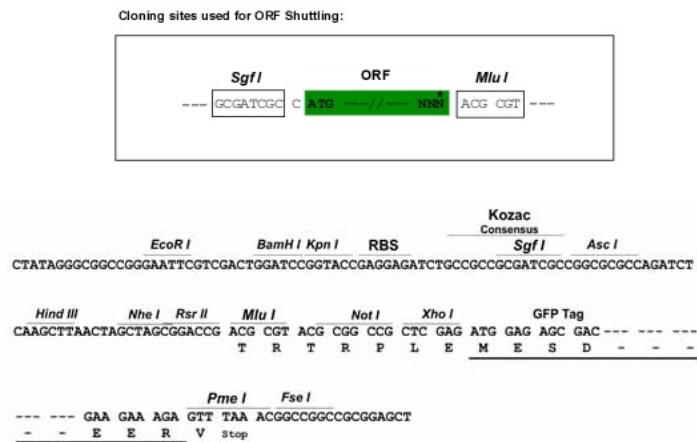
**Protein Sequence:** >RG217975 representing NM\_006873  
 Red=Cloning site Green=Tags(s)

```
MCSTNPGKWTFFDDDDPAVQSSQKSKNFPLENQVCRPNGLKLNLPGLREFPSGSSSTSSSTPLSSPIVDFY
FSPGPPSNSPLSTPTKDFPGFPGIPKAGTHVLYPIPESSSDSPLAISGGESSLLPTRPTCLSHALLPSDH
SCTHPTPKVGLPDEVNPQQAESLGFQSDDLPOFQYFREDCAFSSPFWKDEGSDSHFTLDPPGSKKMFSSR
NKEMPIDQKSLNKCSLNYICEKLEHLQSAENQDSLRLSMHCLCAEENASSFVPHTLFRSQPKSGWSFML
RIPEKKNMSSRQWGIPLKVLPGGILQMYEQLGKLEKPFKEIQLDPYCRLEPKVENFSVAGKIHTVKIE
HVSYTEKRKYHSKTEVVHEPDIEQMLKLGSTSYHDFLDFLTTVEEELMKLPAVSKPKKNYEEQEISLEIV
DNFWGKVTKEGKFVESAVITQMYCLCFVNGNLECFLLNDLELPKRDESYEYKDESEKKGIDILDYHFHKC
VNVQEFEQSRIIKFVPLDACRFELMRFKTLYNGDNLPSLKSVVVVQAYVELQAFVNMASLAQRSSYAG
SLRSCDNIRIHFPVPSQWIKALWTMNLQRQKSLKAKMNRRACLGSLQELESEPIVQTVGSAYKESAYQA
VVKIDRLPDKNSSLDHPHCLSYKLELGSQEIIPSDWYFPATVQFSVPDTCASRTEVRS LGVESDVQPQK
HVQQRACYNIQVEIEKKWIKIDGEDPDKIGDCITQ
```

TRTRPLE - GFP Tag - V

**Restriction Sites:** SgfI-MluI

**Cloning Scheme:**



**ACCN:** NM\_006873

**ORF Size:** 2205 bp

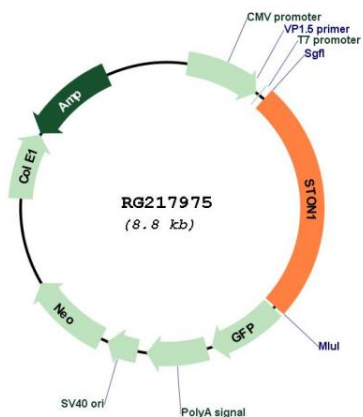
**OTI Disclaimer:** The molecular sequence of this clone aligns with the gene accession number as a point of reference only. However, individual transcript sequences of the same gene can differ through naturally occurring variations (e.g. polymorphisms), each with its own valid existence. This clone is substantially in agreement with the reference, but a complete review of all prevailing variants is recommended prior to use. [More info](#)

**OTI Annotation:** This clone was engineered to express the complete ORF with an expression tag. Expression varies depending on the nature of the gene.

**Components:** The ORF clone is ion-exchange column purified and shipped in a 2D barcoded Matrix tube containing 10ug of transfection-ready, dried plasmid DNA (reconstitute with 100 ul of water).

<b>Reconstitution Method:</b>	<ol style="list-style-type: none"><li>1. Centrifuge at 5,000xg for 5min.</li><li>2. Carefully open the tube and add 100ul of sterile water to dissolve the DNA.</li><li>3. Close the tube and incubate for 10 minutes at room temperature.</li><li>4. Briefly vortex the tube and then do a quick spin (less than 5000xg) to concentrate the liquid at the bottom.</li><li>5. Store the suspended plasmid at -20°C. The DNA is stable for at least one year from date of shipping when stored at -20°C.</li></ol>
<b>RefSeq:</b>	<a href="#">NM_006873.2</a> , <a href="#">NP_006864.2</a>
<b>RefSeq Size:</b>	5822 bp
<b>RefSeq ORF:</b>	2208 bp
<b>Locus ID:</b>	11037
<b>UniProt ID:</b>	<a href="#">Q9Y6Q2</a>
<b>Cytogenetics:</b>	2p16.3
<b>Domains:</b>	Adap_comp_sub
<b>Protein Families:</b>	Transcription Factors
<b>Protein Pathways:</b>	Basal transcription factors
<b>Gene Summary:</b>	<p>Endocytosis of cell surface proteins is mediated by a complex molecular machinery that assembles on the inner surface of the plasma membrane. This gene encodes one of two human homologs of the <i>Drosophila melanogaster</i> stoned B protein. This protein is related to components of the endocytic machinery and exhibits a modular structure consisting of an N-terminal proline-rich domain, a central region of homology specific to the human stoned B-like proteins, and a C-terminal region homologous to the mu subunits of adaptor protein (AP) complexes. Read-through transcription of this gene into the neighboring downstream gene, which encodes TFIIA-alpha/beta-like factor, generates a transcript (SALF), which encodes a fusion protein comprised of sequence sharing identity with each individual gene product. Alternative splicing results in multiple transcript variants. [provided by RefSeq, Oct 2010]</p>

Product images:



Circular map for RG217975