

Product datasheet for **RG217963**

ISLR2 (NM_020851) Human Tagged ORF Clone

Product data:

Product Type:	Expression Plasmids
Product Name:	ISLR2 (NM_020851) Human Tagged ORF Clone
Tag:	TurboGFP
Symbol:	ISLR2
Synonyms:	LINX
Mammalian Cell Selection:	Neomycin
Vector:	pCMV6-AC-GFP (PS100010)
E. coli Selection:	Ampicillin (100 ug/mL)



[View online »](#)

ORF Nucleotide Sequence:

>RG217963 representing NM_020851
 Red=Cloning site Blue=ORF Green=Tags(s)

TTTTGTAATACGACTCACTATAGGGCGGCCGGGAATTCGTCGACTGGATCCGGTACCGAGGAGATCTGCC
 GCC**GCGATCGCC**

ATGTTCCCCCTTCGGGCCCTGTGGTTGGTCTGGGCGCTTCTAGGAGTGGCCGGATCATGCCCGAGCCGT
 GCGCCTGCGTGGACAAGTACGCTCACCAGTTCGCGGACTGCGCTTACAAAGAGTTGCGTGAGGTGCCGGA
 AGGACTGCCTGCCAACGTGACGACGCTTAGTCTGTCCGGAACAAGATCACTGTGCTGCGCGCGGGGCC
 TTCGCGACGTACACAGGTACGTCGCTGTGGCTGGCGACAATGAGGTGCGCACCGTGGAGCCAGGCG
 CACTGGCCGTGCTGAGTCAGCTCAAGAACCTCGATCTGAGCCACAACCTCATATCCAGCTTTCCTGGAG
 CGACCTGCGCAACCTGAGCGCGCTGCAGCTGCTCAAAATGAACCACAACCGCCTGGGCTCTCTGCCCCGG
 GACGCACTCGGTGCGCTACCCGACCTGCGTTCCTGCGCATCAACAACAACCGGCTGCGTACGCTGGCGC
 CTGGCACCTTCGACGCGCTTAGCGCGCTGTCACTTGAACCTCTATCACAATCCCTTCCACTGCGGCTG
 CGCCCTTGTGTGGCTGCAGGCCCTGGGCCGCGAGCACCCGGGTGTCCTTACCCGAGCCGACTCCATTGCT
 TGTGCCTCGCCTCCCGCGCTGCAGGGGGTGCCTGTACCGCCTGCCCGCCTGCCCTGTGCACCGCCCA
 CGGTGCATCTGAGTGCCGAGCCACCGCTTGAAGCACCCGGCACCCCACTGCGCGCAGGACTGGCGTTCGT
 GTTACACTGCATCGCCGACGCCCACCCTACGCCTCGCCTGCAATGGCAACTTCAGATCCCCGGTGGCACC
 GTAGTCTTAGAGCCACCGGTTCTGAGCGGGGAGGACGACGGGGTGGGGCGGAGGAAGGAGAGGGAGAAG
 GAGATGGGGATTTGCTGACGCAGACCCAAGCCAAACGCCGACTCCAGCACCCGCTTGGCCGGCGCCCCC
 AGCCACACCGCGCTTCTGGCCCTCGAAATGGCTCCCTGTTGGTGGCCCTCCTGAGTGCCAAGGAGGCG
 GGCGTCTACACTTGCCGTGCACACAATGAGCTGGGCGCAACTCTACGTCAATACGCGTGGCGGTGGCAG
 CAACCGGGCCCCAAACACGCGCTGGCGCCGGGGGAGAACCAGCGGACAGGCCCCGACTCTGAGCG
 CAAGTCCACAGCCAAGGGCCGGGCAACAGCGTCCCTGCCTTCAAACCCGAGGGCAAAATCAAAGGCCAA
 GGCTGGCCAAGTCAAGTCTCGGGGAGACCGAGACGAGCCGAGGAGGACACAAGTGAAGGAGAGG
 AGGCCGAAGACCAGATCCTCGCGGACCCGGCGGAGGAGCAGCGCTGTGGCAACGGGGACCCTCTCGGTA
 CGTTTCTAACCACGCTTCAACCAGAGCGCAGAGCTCAAGCCGCACGTCTTCGAGCTGGCGTTCATCGCG
 CTGGATGTGGCGGAGCGGAGGCCGCGGGTGCAGCTGACTCCGCTGGCTGCGCGCTGGGGCCCTGGGCCCG
 GCGGGGCTGGCGGAGCCCGCGACCCGGGCGGCGACCCCTGCGCCTACTCTATCTGTGTCCAGCGGGGGG
 CGGCGCGCAGTGCAGTGGTCCCGCTAGAGGAAGGCGTCAACGCCTACTGGTTCGCGGCTGCGGCCG
 GGTACCAACTACTCCGTGCTGCTGGCGCTGGCGGCGAAGCCTGCCACGTGCAAGTGGTGTTCACCA
 AGAAGGAGCTCCCATCGCTGCTGGTTCATAGTGGCAGTGAGCGTATTCCTCCTGGTGTGGCCACAGTGCC
 CCTTCTGGGCGCCGCTGCTGCCATCTGCTGGTAAACACCCGGGCAAGCCCTACCGTCTGATCCTGCGG
 CCTCAGGCCCTGACCCTATGGAGAAGCGCATCGCCGCAACTTCGACCCGCGTGTTCGTACCTCGAGT
 CCGAGAAAAGCTACCCGGCAGGCGGCGAGGCGGGCGGAGGAGCCAGAGGACGTGCAGGGGGAGGGCCT
 TGATGAAGACGCGGAGCAGGGAGACCAAGTGGGACCTGCAGAGAGAGGAGAGCCTGGCGGCTGCTCA
 CTGGTGGAGTCCAGTCCAAGGCCAACCAAGAGGAGTTCGAGGCGGGCTCTGAGTACAGCGATCGGCTGC
 CCCTGGGCGCGAGGCGGTCAACATCGCCAGGAGATTAATGGCAACTACAGGACAGCGGACGGC

AG**CGGACCG**ACGCGTACGCGGCCGCTCGAG - GFP Tag - GTTTAA

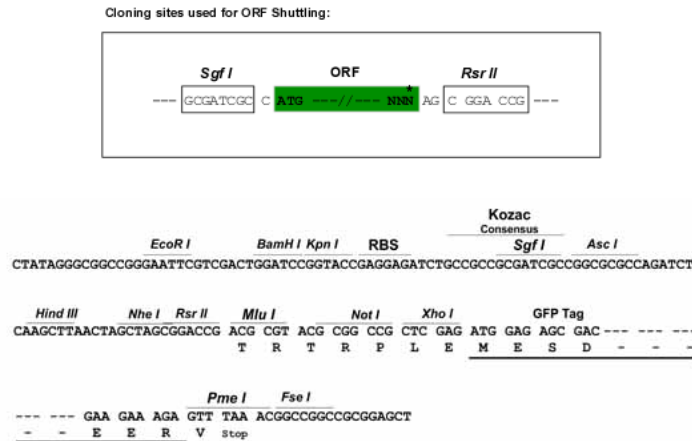
Protein Sequence: >RG217963 representing NM_020851
Red=Cloning site Green=Tags(s)

```
MFPLRALWLVALLGVAGSCPEPCACVDKYAHQFADCAYPELREVPEGLPANVTTLSSLANKITVLRGA
FADVTQVTSWLVAHNEVRTVEPGALAVLSQLKNLDLSHNFISSFPWSDLRNL SALQLLKMNNHRLGSLPR
DALGALPDLRSLRINNRLRTLAPGTFDAL SALSHLQLYHNPFFHCGLVWLQAWAASTRVSLPEPDSIA
CASPPALQGVVYRPLPALPCAPPSVHLSAEPPLAEPGTPLRAGLAFVLHCIADGHPTPRLQWQLQIPGGT
VVLEPPVLSGEDDGVGAEEGEGEGDGLLTQTQAQTPTPAPAWPAPPATPRFLALANGSLLVPLLSAKEA
GVYTCRAHNELGANSTSIRVAVAAATGPPKHAPGAGGEPDQAPTSEKSTAKGRNSVLPSPKEGKIKGQ
GLAKVSVLGETETEPEEDTSEGEAEDQILADPAEEQRCGNGDPSRYVSNHAFNQSAELKPHVFELGVIA
LDVAEREARVQLTPLAARWGPGGAGGAPRGRRLRLLYLCPAGGAAVQWSRVEEGVNAVWFRGLRP
GTNYSVCLALAGEACHVQVVFSTKKELPSLLVIVAVSVFLLVLATVPLLGAACCHLLAKHPKPYRLILR
PQAPDPMEKRIAADFDPRASYLESEKSYAPAGGEAGGEEPEDVQGEGLDEDAEQGDPSGDLQREESLAACS
LVESQSKANQEEFEAGSEYSDRLPLGAEAVNIAQEINGNYRQTAG
```

SGPTRRRLE - GFP Tag - V

Restriction Sites: SgfI-RsrII

Cloning Scheme:



ACCN: NM_020851

ORF Size: 2235 bp

OTI Disclaimer: The molecular sequence of this clone aligns with the gene accession number as a point of reference only. However, individual transcript sequences of the same gene can differ through naturally occurring variations (e.g. polymorphisms), each with its own valid existence. This clone is substantially in agreement with the reference, but a complete review of all prevailing variants is recommended prior to use. [More info](#)

OTI Annotation: This clone was engineered to express the complete ORF with an expression tag. Expression varies depending on the nature of the gene.

Components: The ORF clone is ion-exchange column purified and shipped in a 2D barcoded Matrix tube containing 10ug of transfection-ready, dried plasmid DNA (reconstitute with 100 ul of water).

Reconstitution Method:

1. Centrifuge at 5,000xg for 5min.
2. Carefully open the tube and add 100ul of sterile water to dissolve the DNA.
3. Close the tube and incubate for 10 minutes at room temperature.
4. Briefly vortex the tube and then do a quick spin (less than 5000xg) to concentrate the liquid at the bottom.
5. Store the suspended plasmid at -20°C. The DNA is stable for at least one year from date of shipping when stored at -20°C.

RefSeq: [NM_020851.3](#)

RefSeq Size: 4185 bp

RefSeq ORF: 2238 bp

Locus ID: 57611

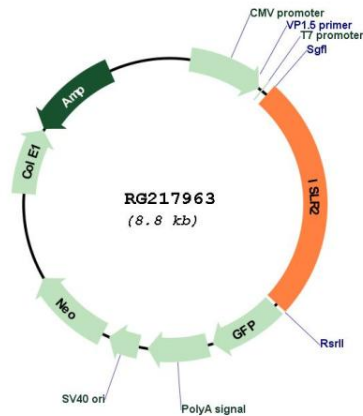
UniProt ID: [Q6UXK2](#)

Cytogenetics: 15q24.1

Protein Families: Druggable Genome, Transmembrane

Gene Summary: Required for axon extension during neural development.[UniProtKB/Swiss-Prot Function]

Product images:



Circular map for RG217963