

Product datasheet for **RG217959**

MAP6 (NM_033063) Human Tagged ORF Clone

Product data:

Product Type:	Expression Plasmids
Product Name:	MAP6 (NM_033063) Human Tagged ORF Clone
Tag:	TurboGFP
Symbol:	MAP6
Synonyms:	MAP6-N; MTAP6; N-STOP; STOP
Mammalian Cell Selection:	Neomycin
Vector:	pCMV6-AC-GFP (PS100010)
E. coli Selection:	Ampicillin (100 ug/mL)



[View online »](#)

**ORF Nucleotide
Sequence:**

>RG217959 representing NM_033063
Red=Cloning site Blue=ORF Green=Tags(s)

TTTTGTAATACGACTCACTATAGGGCGGCCGGGAATTCGTCGACTGGATCCGGTACCGAGGAGATCTGCC
GCC**GCGATCGCC**

ATGGCGTGGCCGTGCATCACGAGGGCTGCTGCATCGCCCGTTCTGGAACCAAGTGGACAAAGCGGACA
TCGCTGTGCCGCTGGTTTTACCAAGTACTCGGAGGCCACCGAGCACCCGGGCGCCCGCCGAGCCACC
GCCGCCGAGCAGCAGGCGCAGCCGGCGCTCGGCCCCCTCGGCGCGCGGTTGCCATAGAGACGACAG
CCAGCCCAGGGCGAGTTGGATGCAGTTGCCCGGGCAACGGGGCCAGCGCCTGGGCTACCGGCGAGCGCG
AGCCGGCGGGGGCCCGGCCGAGCGGGCCGGGCGCTGGGCTCCGGCTCCACCTCCGGCCCGC
GGACTCGTGATGCGGCAGGATTACCGAGCCTGGAAGGTGCAGCGCCCGAGCCAGCTGCCGGCCGCGC
AGCGAATACCAGCCCTCCGACGCTCCCTTCGAGCGCGAGACCCAGTACCAGAAGGACTTCCGCGCTGGC
CGCTGCCGCGCCCGGGGACCACCCGTTGATCCCAAGCCCGTGCAGATCTCTCGGGCTCCAGGGCTC
GGCGCCATTCTCGGGCGCCCAAGCGCCGGCCGAGAGCCAGGAGCGCTGGCCAGTGCAGCGCCGCGCT
GAGGCCCGGGAGCAGGAGCGGCCCCCGCGGAGCGGGTGGCCTGGCGGCGGAAAGGCGTCCGGGGCGG
ACGAGCGCGACACGCGCAGGAAGGCCGGGCTGCCTGGATTGTGCGCCGCGCCGAGGGCCTGGGGCACGA
GCAGAGCCGCTGCCCGGGCCAGGCCAGGTCCAGGCCACCGCCCGAGGCTGGCAGGGGGCGCGCC
GCGGCGGACGCCCTCAACCGGCAATCCGCGAGGAGTGGCGAGTGCAGTGCAGTGCAGTGCAGTGCAGTGC
AATTACAGGATGGATGACGACATCAAGCTGTGAAACCAATAAAGGCCAAGCCCAAGTACAAGCCCCAGA
TGATAAGATGGTTCATGAGACCAGCTACAGTGTCAAGTCAAAGGAGAGGCCAGCAAGCCAACAACAGT
GACAATAAGGTCATTGATCGCAGAAGAATACGACGCTCTACAGCGAACCCCTCAAGGAACCCCCAAGG
TGGAAAAACCTAGTGTTCAGAGTCCAAACCAAAAAAGACCTCAGCGAGCCATAAGCCACGAGGAAGGC
CAAAGACAAGCAGGCGGTGTGAGCCAGGCTGCCAAGAAAAAGCGCGGAGGGCCCGAGTACCACCAAG
CCAGACGACAAGGAGCAAGCAAGAGATGAACAATAAACTGGCTGAGGGCAAAGAGAGCCTGGCTCAAC
CCGTCAAGTCAAGTCAAGGTCCTGTAGCCACAGAGCCAGACAAGGATCAAGGTTCTGTGGT
CCCAGGCTTCTGAAAGGTCAAGGTCCTATGGTGAAGAGCCTCTGAAGAAGCAAGGTTCTGTGGTCCCA
GGGCTCCAAAGGATCTAGGTCCATGATCCCATTACCAGTCAAGGATCAAGATCACACGGTCCCTGAGC
CTTTAAAGAATGAAAGCCCTGTTATCTCAGCACAGTCAAGGACCAAGTCCCTCGGTCCAGTTCCTCC
AAAGAATCAAAGTCCATGGTTCAGCAAAAGTAAAGGATCAAGGCTCTGTGGTACCAGAGTCTCTAAAG
GATCAAGGTCCTAGGATTCCTGAGCCTGTGAAGAATCAAGCTCCTATGGTCCCAGCACCTGTCAAGGATG
AAGGTCCCATGGTCTCAGCATCTGTCAAGGATCAAGGTCCTATGGTCTCAGCACCTGTCAAGGATCAAGG
TCCCATAGTCCCAGCACCTGTCAAGGGTGAAGTCCCATAGTCCCAGCACCTGTCAAGGATGAAGTCCC
ATGGTCTCAGCACCTATCAAGGATCAAGATCCCATGGTCCCAGAGCATCCGAAGGATGAAAGTGCCATGG
CCACAGCACCCATAAAGAATCAAGGTTCCATGGTCTCTGAGCCTGTAAAGAATCAAGGTTTGTGGTCTC
AGGGCCAGTCAAGGATCAAGATGTTGTAGTCCCAGAGCATGCAAAGGTTACGATTCTGCAGTTGTGGCA
CCTGTAAGAATCAAGGTCCTGTGGTCCCCGAGTCCGTGAAGAATCAAGACCCATTCTCCAGTACTAG
TTAAGGATCAAGGCCACAGTCTACAGCCTCCAAAGAATCAAGGTCGTATAGTCCCTGAACCTCTGAA
GAATCAAGTTCCTATAGTCCCAGTGCCTCTGAAGGATCAAGATCCTCTGGTGCCAGTACCAGCAAAGGAC
CAAGGTCTGCAGTCCCTGAACCTCTGAAGACTCAAGGTCCTCCAGGACCCCTCAGCTACCTACTGTCTCAC
CTCTACCCGAGTCATGATCCCAACTGCCCCCATACGGAATACATTGAGAGCTCCCT

ACGCGTACGCGGCCGCTCGAG – GFP Tag – GTTTAA

Protein Sequence: >RG217959 representing NM_033063
 Red=Cloning site Green=Tags(s)

```

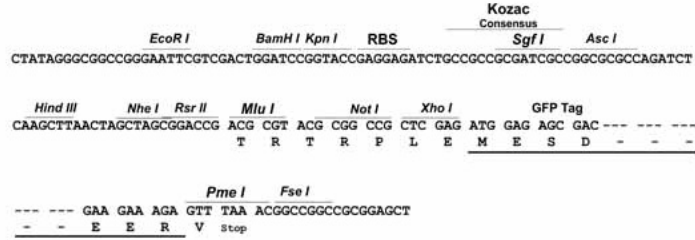
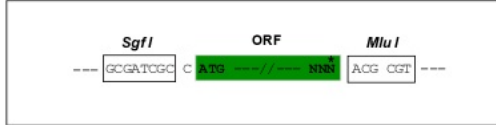
MAWPCITRACCIARFWQLDKADIAVPLVFTKYSEATEHPGAPPQPPPPQQAQALAPPSARAVAIETQ
PAQGELDAVARATGPAPGPTGEREPAAGPGRSGPGPLGSGSTSGPADSVMRQDYRAWKVQRPEPSCRPR
SEYQPSDAPFERETQYQKDFRAWPLPRRGDHPWIPKPVQISAASQASAPILGAPKRRPQSQERWPVQAAA
EAREQEAAAPGGAGGLAAGKASGADERDTRRKAGPAWIVRRAEGLGHEQTPLPAAQAQVQATGPEAGRGRA
AADALNRQIREEVASAVSSSYRNEFRAWTDIKPVKPIKAKPQYKPPDDKMVHETSYSAQFKGEASKPTTA
DNKVIDRRRIRSLYSEPFKEPPKVEKPSVQSSPKKTSASHKPTRKAKDKQAVSGQAAKKSAEGPSTTK
PDDKEQSKEMNNKLAEAKESLAQPVSDDSSKTQGPVATEPDKDQGSVVPGLLKGQGMVQEPLKKQGSVVP
GPPKDLGPMIPLPVKDQDHTVPEPLKNESPVISAPVKDQGPSVPVPPKNQSPMVPKVKDQGSVVPESLK
DQGPRIPVKNQAPMVPAPVKDEGPMVSASVKDQGMVSAPVKDQGPIVPAPVKGEGPIVPAPVKDEGP
MVSAPIKDQDPMVPEHPKDESAMATAPIKNQGSVMSEPVKNQGLVVSVPVKDQDQVVVPEHAKVHDSAVVA
PVKNQGPVVPESVKNQDPILPVLVKDQGPVLPVPPKNQGRIVPEPLKNQVPIVPVPLKDQDPLVPVPAKD
QGFVAVPEPLKTQGPRDPQLPTVSPLPRVMIPTAPHTEYIESSP
  
```

TRTRPLE - GFP Tag - V

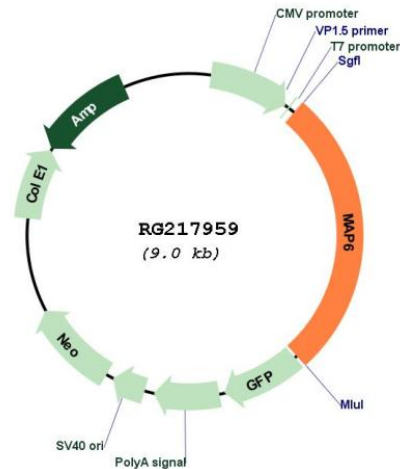
Restriction Sites: SgfI-MluI

Cloning Scheme:

Cloning sites used for ORF Shutting:



Plasmid Map:



ACCN: NM_033063

ORF Size: 2439 bp

OTI Disclaimer: The molecular sequence of this clone aligns with the gene accession number as a point of reference only. However, individual transcript sequences of the same gene can differ through naturally occurring variations (e.g. polymorphisms), each with its own valid existence. This clone is substantially in agreement with the reference, but a complete review of all prevailing variants is recommended prior to use. [More info](#)

OTI Annotation: This clone was engineered to express the complete ORF with an expression tag. Expression varies depending on the nature of the gene.

Components: The ORF clone is ion-exchange column purified and shipped in a 2D barcoded Matrix tube containing 10ug of transfection-ready, dried plasmid DNA (reconstitute with 100 ul of water).

Reconstitution Method:

1. Centrifuge at 5,000xg for 5min.
2. Carefully open the tube and add 100ul of sterile water to dissolve the DNA.
3. Close the tube and incubate for 10 minutes at room temperature.
4. Briefly vortex the tube and then do a quick spin (less than 5000xg) to concentrate the liquid at the bottom.
5. Store the suspended plasmid at -20°C. The DNA is stable for at least one year from date of shipping when stored at -20°C.

RefSeq: [NM_033063.1](#), [NP_149052.1](#)

RefSeq Size: 2666 bp

RefSeq ORF: 2442 bp

Locus ID: 4135

UniProt ID: [Q96JE9](#)

Cytogenetics: 11q13.5

Gene Summary:

This gene encodes a microtubule-associated protein. The encoded protein is a calmodulin-binding and calmodulin-regulated protein that is involved in microtubule stabilization. Two transcript variants encoding distinct isoforms have been identified for this gene. [provided by RefSeq, Jul 2008]