

Product datasheet for **RG217953**

PML Protein (PML) (NM_033240) Human Tagged ORF Clone

Product data:

Product Type:	Expression Plasmids
Product Name:	PML Protein (PML) (NM_033240) Human Tagged ORF Clone
Tag:	TurboGFP
Symbol:	PML
Synonyms:	MYL; PP8675; RNF71; TRIM19
Mammalian Cell Selection:	Neomycin
Vector:	pCMV6-AC-GFP (PS100010)
E. coli Selection:	Ampicillin (100 ug/mL)



[View online »](#)

ORF Nucleotide Sequence:

>RG217953 representing NM_033240
 Red=Cloning site Blue=ORF Green=Tags(s)

TTTTGTAATACGACTCACTATAGGGCGGCCGGGAATTCGTCGACTGGATCCGGTACCGAGGAGATCTGCC
 GCC**CGGATCGCC**

ATGGAGCTGCACCCGCCGATCTCCGAGGCCAGCAGGACCCGCCCGCCAGGAGCCACCATGC
 CTCCTCCCGAGACCCCTCTGAAGGCCGCCAGCCAGCCAGCCAGCCAGCCCTACAGAGCGAGCCCGC
 TTCGGAGGAGGATTCCAGTTTCTGCGCTGCCAGCAATGCCAGGCGGAAGCCAAGTGCCGAAGCTGCTG
 CCTGTCTGCACACGCTGTGCTCAGGATGCCTGGAGGCGTCGGGCATGCAGTGCCCATCTGCCAGGCGC
 CCTGGCCCTAGGTGCAGACACCCGCCCTGGATAACGTCTTTTTCGAGAGTCTGCAGCGGCGCTGTC
 GGTGTACCGGCAGATTGTGGATGCGCAGGCTGTGTGCACCCGCTGCAAAGAGTCGGCCGACTTCTGGTGC
 TTTGAGTGCAGCAGCTCCTCTGCGCAAGTGCTTCGAGGCACACCAGTGGTTCTCAAGCAGGAGCC
 GGCCCTAGCAGAGCTGCGCAACCAGTCGGTGCCTGAGTTCCTGGACGGCACCCGCAAGACCAACAAT
 CTTCTGCTCCAACCCCAACCACCGACCCCTACGCTGACCAGCATCTACTGCCGAGGATGTTCAAGCCG
 CTGTGCTGCTCGTGCAGCTCCTTGACAGCAGCCACAGTGAGCTCAAGTGCAGACATCAGCGCAGAGATCC
 AGCAGCGACAGGAGGAGCTGGACGCCATGACGCAGGCGCTGCAGGAGCAGGATAGTGCTTTGGCGCGGT
 TCACGCGCAGATGCACGCGGCCGTGCGCCAGCTGGGCCGCGCGCTGCCGAGACCGAGGAGCTGATCCGC
 GAGCGCGTGCAGGAGTGGTAGCTCACGTGCGGGCTCAGGAGCGCGAGCTGCTGGAGGCTGTGGACGCGC
 GGTACCAGCGGACTACGAGGAGATGGCCAGTCGGCTGGGCCCGCTGGATGCTGTGCTGCAGCGCATCCG
 CACGGGACGCGGCTGGTGCAGAGGATGAAGTGTACGCTCGGACCAGGAGGCTGGACATGCACGGT
 TTCCTGCGCAGGCGCTCTGCCGCTGCGCCAGGAGGCCAGAGCCAGAGCTGCAAGCTGCCGTGCGCACCG
 ATGGCTTCGACGAGTTCAAGTGCAGCTGCAGGACCTCAGCTCTTGATCACCCAGGGAAAGATGCAGC
 TGTATCCAAGAAAGCCAGCCAGAGGCTGCCAGCACTCCAGGGACCCTATTGACGTTGACCTGGATGTC
 TCCAATACAACGACAGCCAGAAGAGGAAGTGCAGCCAGACCCAGTGCCCGAGGAAGGTCATCAAGATGG
 AGTCTGAGGAGGGAAAGGAGGCAAGGTTGGCTCGGAGCTCCCGGAGCAGCCAGGCCAGCACCTCCAA
 GGCAGTCTCACACCCACCTGGATGGACCGCTAGCCCGAGGAGCCCGTCATAGGAAGTGAGGTCTTC
 CTGCCAACAGCAACCACGTGGCCAGTGGCCGCGGGGAGGCAGAGGAACGCGTTGTGGTATCAGCAGCT
 CGGAAGACTCAGATGCCAAAACCTCGGTGAGTGGCCAGAAAGTTCAGCCAGGACTCCTGCCTCCCCCA
 TTTCAGGTCCAGGGGACAGCCACAGCAGGTGACTCTCAGACTGCCTTGCCTGGGAATTTTCCA
 GTGAGGCAT

AG**CGGACCG**ACGCGTACGCGGCCGCTCGAG - GFP Tag - GTTTAA

Protein Sequence:

>RG217953 representing NM_033240
 Red=Cloning site Green=Tags(s)

MEPAPARSPRPQQDPRPQEPMPPEPSEGRQSPSPSPPTERAPASEEEFQFLRCQQCQAEAKCPKLL
 PCLHTLCSGCLASGMQCPICQAPWPLGADTPALDNVFFESLQRRLSVYRQIVDAQAVCTRCKESADFWC
 FECEQLLCAKCFEAHQWFLKHEARPLAELRNQSVREFLDGTRKTNNIFCSNPNHRTPLTSIYCRGCSKP
 LCCSCALLDSSHSELKCDISAEIQQRQEELDAMTQALQEQDSAFGAVHAQMHAAVGQLGRARAETEELIR
 ERVVRQVVAHVRAQERELLEAVDARYQRDYEMASRLGRLDAVLQRIRTSALVQRMKCYASDQEVLDMHG
 FLRQALCRLRQEEPQSLQAAVRTDGFDEFKVLQDLSSCITQGKDAAVSKKASPEAASTPRDPIDVDLDV
 SNTTTAQKRKCSQTQCPKVIKMESEEGKEARLARSSPEQPRPSTSKAVSPPHLDGPPSPRSPVIGSEVF
 LPNSNHVASGAGEAERVVVISSESDSAENSVSGPEVQPRTPASPHFRSQGAQPQVTLRLALRLGNFP
 VRH

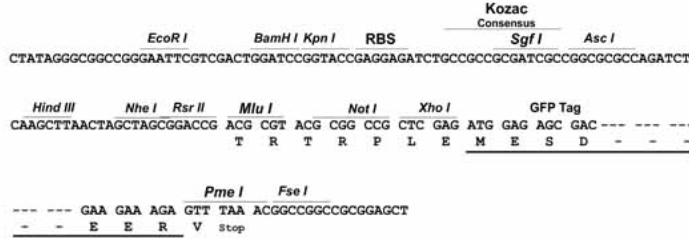
SGP**TRRRLE** - GFP Tag - V

Restriction Sites:

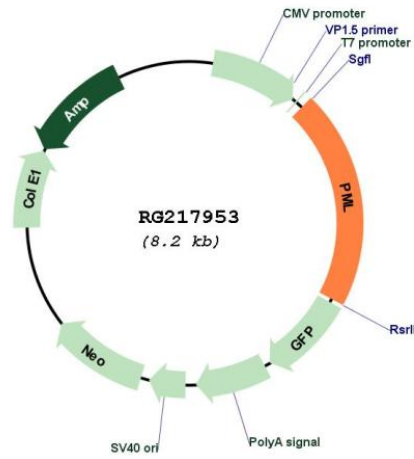
Sgfl-RsrII

Cloning Scheme:

Cloning sites used for ORF Shuttling:



Plasmid Map:



ACCN: NM_033240
 ORF Size: 1833 bp

OTI Disclaimer:	<p>Due to the inherent nature of this plasmid, standard methods to replicate additional amounts of DNA in E. coli are highly likely to result in mutations and/or rearrangements. Therefore, OriGene does not guarantee the capability to replicate this plasmid DNA. Additional amounts of DNA can be purchased from OriGene with batch-specific, full-sequence verification at a reduced cost. Please contact our customer care team at custsupport@origene.com or by calling 301.340.3188 option 3 for pricing and delivery.</p> <p>The molecular sequence of this clone aligns with the gene accession number as a point of reference only. However, individual transcript sequences of the same gene can differ through naturally occurring variations (e.g. polymorphisms), each with its own valid existence. This clone is substantially in agreement with the reference, but a complete review of all prevailing variants is recommended prior to use. More info</p>
OTI Annotation:	This clone was engineered to express the complete ORF with an expression tag. Expression varies depending on the nature of the gene.
Components:	The ORF clone is ion-exchange column purified and shipped in a 2D barcoded Matrix tube containing 10ug of transfection-ready, dried plasmid DNA (reconstitute with 100 ul of water).
Reconstitution Method:	<ol style="list-style-type: none"> 1. Centrifuge at 5,000xg for 5min. 2. Carefully open the tube and add 100ul of sterile water to dissolve the DNA. 3. Close the tube and incubate for 10 minutes at room temperature. 4. Briefly vortex the tube and then do a quick spin (less than 5000xg) to concentrate the liquid at the bottom. 5. Store the suspended plasmid at -20°C. The DNA is stable for at least one year from date of shipping when stored at -20°C.
RefSeq:	NM_033240.2 , NP_150243.2
RefSeq Size:	3751 bp
RefSeq ORF:	1836 bp
Locus ID:	5371
UniProt ID:	P29590
Cytogenetics:	15q24.1
Protein Families:	Druggable Genome, Transcription Factors
Protein Pathways:	Acute myeloid leukemia, Pathways in cancer, Ubiquitin mediated proteolysis

Gene Summary:

The protein encoded by this gene is a member of the tripartite motif (TRIM) family. The TRIM motif includes three zinc-binding domains, a RING, a B-box type 1 and a B-box type 2, and a coiled-coil region. This phosphoprotein localizes to nuclear bodies where it functions as a transcription factor and tumor suppressor. Its expression is cell-cycle related and it regulates the p53 response to oncogenic signals. The gene is often involved in the translocation with the retinoic acid receptor alpha gene associated with acute promyelocytic leukemia (APL). Extensive alternative splicing of this gene results in several variations of the protein's central and C-terminal regions; all variants encode the same N-terminus. Alternatively spliced transcript variants encoding different isoforms have been identified. [provided by RefSeq, Jul 2008]