

Product datasheet for **RG217952**

ANKFN1 (NM_153228) Human Tagged ORF Clone

Product data:

Product Type:	Expression Plasmids
Product Name:	ANKFN1 (NM_153228) Human Tagged ORF Clone
Tag:	TurboGFP
Symbol:	ANKFN1
Mammalian Cell Selection:	Neomycin
Vector:	pCMV6-AC-GFP (PS100010)
E. coli Selection:	Ampicillin (100 ug/mL)



[View online »](#)

ORF Nucleotide
Sequence:

>RG217952 representing NM_153228
Red=Cloning site Blue=ORF Green=Tags(s)

TTTTGTAATACGACTCACTATAGGGCGGCCGGAATTCGTCGACTGGATCCGGTACCGAGGAGATCTGCC
GCC**CGCATCGCC**

ATGGAGGCGTCTCTAACCAGGAGGCTACTCTTTAAAGACAGGCATTTTACTTGCAGCAAAATAATAGGAA
GGAGATTCGCTTCTTTGCACAGAGGCTGAGCCACAGGAGAAAGCAAAGCCAATGTGATTTATTGAATGA
AAGCACTGGACAATTACCAACAATTGTTCTCTGCTGCCTCGAACAGCATAAACTGGAATTGTCGTGTG
AAAATGACGCAACAAATGCAAAATTTACATCTCTGTCACTCAAAAAACATAGTGTCTCCCTCATCTCCCA
ACGCAGCCAAACGCCTGTACAGGAACCTCTCTGAGAACTGAAAGGGAGCCACTTCTCTCGATGAGGC
CTATTTTAGGACAAGAAGTATCGGCTGAGTCTCAGGAAGACCTCGGTGAATTTCCAGGGCAATGAAGCC
ATGTTTGGAGCAGTGAACAGCAGGACATGGATGCTGTGCAGATCCTCCTGTATCAGTACACACCAGAAG
AACTTGACCTCAACACACCTAACAGCGAGGGCTTGACACCCTGGATATTGCCATCATGACCAACAATGT
GCCATTGCAAGGATTCTTCTGAGGACAGGGGCCGAGAAAGTCCACACTTTGTCAAGCCTGGAAAGCCGA
GCAATGCACCTAAACACACTGGTCCAGGAAGCCCAGGAGAGGGTGAAGTGAAGTGTCTGCCAGGTGGAGA
ATGAAGGATTCACCTCTGGACAACACAGAGAAAGAGAAACAGCTGAAAGCTGGGAGTGGAGGTATCGGCT
CTACAGACGCATGAAAACAGGCTTTGAGCATGCCAGAGCCCTGAGATGCCAACCAATGTCTGTCTCATG
GTAACCAGCAGCACAATCACTCACTGTCAGCTTCCAAGAGCCTCTTAGCGTCAATGCAGCTGTAGTAACCA
GGTATAAAGTGGAAATGGAGTATGTCGAAGACTTTTCTCCTTTGGCTGGAGAAATCATCATGGATAATCT
GCAGACTCTGAGATGCACAATCACAGGACTTACAATGGGCCAACAGTATTTTGTCAAGTCTCGGCTTAC
AATATGAAAGGATGGGGACCTGCTCAGACCACGACACCGGCATGTGCCTCTCCTTCAACTGGAAGACT
ATGACGACAGAGAGCCAGACACAAGGGACAGAGTGAAGTTTTGGAAGGTCTGCTGCAGCAGGTCGGAGC
CCTTCATCAGCATTACAGTTGCCGGGAAAGCACAAAATTACAAACCACAGGCCGCAAGCAGTCAGTCTCA
AGAAGCCTGAAACACCTGTTCCATTCTCGAACAAAGTTTGTGAAGACCTTAAACGGGGACTCTACATAG
CCATTATATTTTATTACAAAGACAATATCTTAGTCACCAATGAAGATCAAGTACCAATGTTGAAATAGA
TGACTCTCACACCAGTCTATTACACAAGATTTCTGTGGTTCACGAAGCTGTCTGTATGTGGGAAGAT
ATAAGGTGGCTGAGGCAAAGCATACCAATATCCTCATCCTCATCCACAGTGTGCAAACTCGGCAGAAGA
TGCTCGCAGCAACAGCACAGCTACAGAATTTACTTGGGACACACAACCTGGGAAGAGTTTACTATGAGCC
CATTAAAGATCGACATGGAACATACTCATAGTACCATCAGGGAGGTGGAGATGCTTTATTCATTTTTT
AATGGCAATGGATGCAGATCTCAAAGCTGCAAAGCCAGAGAAAGTCTCTATCAACACCTGAGGAGCCAA
CAGCTTTAGACATTCTACTGATAACCATCCAGGATATTCTATCCTATCACAAAAGGAGTCATCAGCGTCT
CTTTCTGGATTATCTGGGTTACCTAAAGCTCTGTAGCTCTGTGGATCAAATCAAAGTCTTGTGTACC
CAAAGTTGCCAACATTCTCTGCCAGTGAAGATCCGTGAAAACAATAATTTCTAGAGAGGAATGGG
AATGGATCCAAAAGCTTTCTGGCTCTGAATCTATGGAAAGTGTGGATCATACTTCTGACTGCCCCATGCA
ATTGTTCTTCTACGAGCTCCAGATGGCAGTGAAGCTCTCCTCAGCAGATCAATATACCTCTACACCAG
GCAAGGAACTCCGCCTTACACACAGGAGGTGTTGGAATGGGTCAATGTGTCTTTCTCTCTCTGC
TCCCTGCCTCAGACGACGTCTGTACAGCCCCAGGACAGAATAATCCTTACACCCCACTCAGGGTTTCT
TAACCTCCCTCTCAGATGTTTGAACCTGGTATAGTAGCTTGTTCACC

ACGCGTACGCGGCCGCTCGAG – GFP Tag – GTTTAA

Protein Sequence: >RG217952 representing NM_153228
 Red=Cloning site Green=Tags(s)

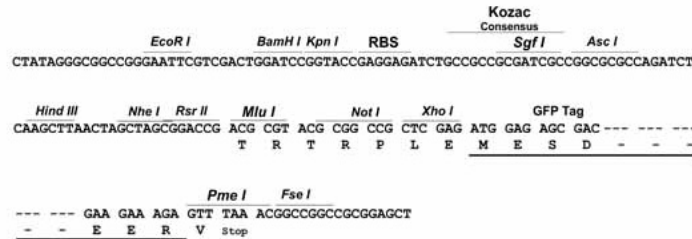
```
MEASLTRRLFKDRHFTCSKIIGRRFACFAQRLSHRRKQSQCDLLNESTGQLPTTCSAASNSINWNCRV
KMTQQMQNLHLCSKKSAPSSPNAAKRLYRNLSEKLGSHSSSFDEAYFRTRTRDRLSLRKTSVNFQGNEA
MFEAVEQQDMDAVQILLYQYTPPEELDLNTPNSEGLTPLDIAIMTNNVPIARILLRTGARESPHFVLSER
AMHLNLTLVQEAQERVSELSAQVENEFTLDNTEKEKQLKAWEWRYRLYRRMKTGFEHARAPEMPTNVCLM
VTSSTSLTVSFQEPLSVNAAVVTRYKVEWSMEDFSPLAGEIIMDNLQTLRCTITGLTMGQQYFVQVSAY
NMKGWGAQTTTTACASPSNWKDYDDREPRHKQSEVLEGLLQQVVRALHQHYSCRESTKLQTTGRKQSVS
RSLKHLFHSSNKFKVTKLRGLYIAIIFYKDNILVTNEDQVPIVEIDDSHTSSITQDFLWFTKLSMVED
IRWLRQSIPISSSSSTVLQTRQKMLAATAQLQNLLGTHNLGRVYVEPIKDRHGNILIVTIREVEMLYSFF
NGKWMQISKLQSQRSLSTPEEPTALDILLITIQDILSYHKRSHQRLFPGLYLGYLKCSSVDQIKVLVT
QKLPNILCHVKIRENNNISREWEWIQKLSGSESMESVDHTSDCPMQLFFYELQMAVKALLQQINIPLHQ
ARNFRLYQEVLEMGHVNSFLLLL PASDDVCTAPGQNNPYTPHSGFLNPLQMFELGIVACFT
```

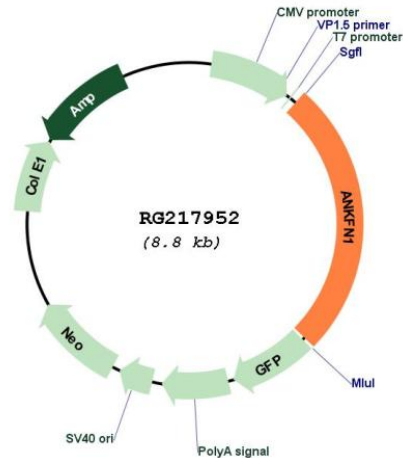
TRTRPLE - GFP Tag - V

Restriction Sites: SgfI-MluI

Cloning Scheme:

Cloning sites used for ORF Shuttling:



Plasmid Map:


ACCN: NM_153228

ORF Size: 2289 bp

OTI Disclaimer: The molecular sequence of this clone aligns with the gene accession number as a point of reference only. However, individual transcript sequences of the same gene can differ through naturally occurring variations (e.g. polymorphisms), each with its own valid existence. This clone is substantially in agreement with the reference, but a complete review of all prevailing variants is recommended prior to use. [More info](#)

OTI Annotation: This clone was engineered to express the complete ORF with an expression tag. Expression varies depending on the nature of the gene.

Components: The ORF clone is ion-exchange column purified and shipped in a 2D barcoded Matrix tube containing 10ug of transfection-ready, dried plasmid DNA (reconstitute with 100 ul of water).

Reconstitution Method:

1. Centrifuge at 5,000xg for 5min.
2. Carefully open the tube and add 100ul of sterile water to dissolve the DNA.
3. Close the tube and incubate for 10 minutes at room temperature.
4. Briefly vortex the tube and then do a quick spin (less than 5000xg) to concentrate the liquid at the bottom.
5. Store the suspended plasmid at -20°C. The DNA is stable for at least one year from date of shipping when stored at -20°C.

RefSeq: [NM_153228.1](#), [NP_694960.1](#)

RefSeq Size: 2426 bp

RefSeq ORF: 2292 bp

Locus ID: 162282
UniProt ID: [Q8N957](#)
Cytogenetics: 17q22
Domains: ANK, FN3
Protein Families: Druggable Genome