

Product datasheet for **RG217946**

Syntabulin (SYBU) (NM_001099745) Human Tagged ORF Clone

Product data:

Product Type:	Expression Plasmids
Product Name:	Syntabulin (SYBU) (NM_001099745) Human Tagged ORF Clone
Tag:	TurboGFP
Symbol:	SYBU
Synonyms:	GOLSYN; OCSYN; SNPHL
Mammalian Cell Selection:	Neomycin
Vector:	pCMV6-AC-GFP (PS100010)
E. coli Selection:	Ampicillin (100 ug/mL)



[View online »](#)

ORF Nucleotide Sequence:

>RG217946 representing NM_001099745
 Red=Cloning site Blue=ORF Green=Tags(s)

TTTTGTAATACGACTCACTATAGGGCGGCCGGAATTCGTCGACTGGATCCGGTACCGAGGAGATCTGCC
 GCC**CGGATCGCC**

ATGGGGCCCTCCGCGAGAGCAAGAAGGAGCACAGAGTGCAGCATCATGACAAGGAGATTTCTCGAAGCC
 GAATTCGCCGTTGATTCTTCGGCCCATATGCCCAACACAGCACAAAGTGTCGCCAGCCTCTGAGTC
 TCCTTTCTCTGAGGAAGAGAGCAGAGAGTTCAACCCAGCAGCTCTGGCGCTCAGCGAGGACCGTTAGC
 AGCAACAGCTTCTGCTCAGATGACACAGGCTGTCTAGCAGCCAGTCAGTGTCTCTGTGAAGACACCCCT
 CAGATGCTGGAACAGCCCCATTGGCTTTTGCCTGGAAGTGATGAAGGCTTCACCAGAAAGAAATGCAC
 GATTGGAATGGTTGGTGAAGGAAGCATTAGTCTCTCGATATAAGAAGGAATCAAAGTCAGGCCTTGTG
 AAACAGGTAGTGAAGCTGATTTAGTCTCTGAGCAGCACAGGCAGCATTTCGCTCTGAGGTCCATA
 TGTCGACTGCGGAAGCAAGCGTCTTCTTTCACGCAATCGAGTCTCATGGCGGAGTAATGGAGC
 TTCGTACACAAGCCTGGCAGCAGCCATCATCCCGCGGAAAAGGACCTTCTGTCCATGCTGTGCAGG
 AATCAGCTGAGCCCTGTCAATATCCATCCAGTTATGCACCTTCTCCCAAGCAGTAGCAACTCAGGCT
 CCTACAAAGGAAGCGACTGTAGCCCATCATGAGGCGTTCTGGAAGGTACATGTCTTGCGGTGAAAATCA
 TGGTGTGACAGCCCCAAACCCAGAGCAGTATTTGACTCCACTGCAGCAGAAAAGAGGTGACAGTGAGACAC
 CTCAAAACCAAGCTGAAGGAATCTGAGCGCCGACTCCATGAAAGGGAAAGTGAATCGTGGAGCTTAAGT
 CCCAGCTGGCCCGCATGCGAGAGGACTGGATTGAGGAGGAGTGTACCCGGTAGAGGCCAGTTGGCACT
 CAAAGAAGCCAGGAAAGAGATTAACAGCTCAACAGGTATCGAAACATGCGGAGCAGCTTGGCTGAT
 AAAGATAAAGGCATTAGAAAATATTTGTGGACATAAACATCCAAAACAAGAAGCTGGAGTCTCTCCTTC
 AGAGCATGGAGATGGCACACAGTGGCTCTCTGAGGGACGAACTGTGCCTAGACTTCCATGTGATTCCCC
 AGAGAAGAGCTTAACCCCTCAACCCCTCTTGACACAATGGCAGATGGGTTATCTCTGGAAGAGCAGGTC
 ACGGGGAAGGGGCTGACAGGGAGCTACTGGTAGGAGATAGCATAGCCAACAGCACAGATTTGTTGATG
 AGATAGTGACAGCCACCACCACAGAATCTGGTACCTGGAGCTTGTGCATTCCACCCCTGGGGCTAACGT
 CCTGGAGCTGCTGCCATAGTCAATGGTTCAGGAGGAGGGCAGTGTGGTGGTGGAGCGAGCCGTTACAGACC
 GACGTGGTGCCTACAGCCAGCCATCTCAGAGCTCATTAGAGTGTGCTGCAGAAGCTCCAGGACCCCT
 GTCCTCGAGCTTGGCGTCCCCTGATGAGTCTGAACCAGACTCGATGGAGAGCTTCCAGAGTCCCTCTC
 TGCCTTAGTGGTTGATTTAACTCCAAGAAATCCAAACTCAGCCATCCTTTTGTCTCCCGTGGAGACCCCT
 TACGCAATGTGGATGCAGAAGTTCATGCAAAACCGCCTCATGAGAGAGCTGGATTTTGCAGCCTGCGTGG
 AAGAGAGGTTGGATGGTGTATCCCACTGGCTCGCGGGGGCGTGTGAGGCACTACTGGAGCAGCAGCTT
 CCTGGTGGATCTCCTGGCTGTGGCTGCCCCGTTGGTCCCCACGGTCTGTGGGCATTCACTACTCAGAGA
 GGGGAACGGATCCTGTGTATAACATCGGGGCTTGTCTCAGGGGCTGTTGCGTGGTTGCCCTGCATTTCG
 TCCGCCGACCGCTTCCGTATCAAAAC

ACCGGTACGCGGGCCGCTCGAG - GFP Tag - GTTTAA

Protein Sequence: >RG217946 representing NM_001099745
 Red=Cloning site Green=Tags(s)

MGPLRESKKEHRVQHHDKEISRSRIPRLILRPHMPQQQHKVSPASESPFSEESREFNPSSSGRSARTVS
 SNSFCSDDTGCPSSQSVSPVKTPSDAGNSPIGFPCGSDEGFTRKKCTIGMVGEGSIQSSRYKKESKGLV
 KPGSEADFSSSSSTGSI SAPEVHMSTAGSKRSSSRNRGPHGRSNGASSHKPGSSPSSPREKDLLSMLCR
 NQLSPVNIHPSYAPSSPSSNSGSYKGSDCSPIMRRSGRYMSCGENHGVRPPNPEQYLTPLQQKEVTVRH
 LKTKLKESEERRLHERESEIVELKSQLARMREDWIEEECHRVEAQLALKEARKEIKQLKQVIETMRSSLAD
 KDKGIQKYFVDINIQNKKLESL LQSMEMAHSGSLRDELCLDFPCDSPEKSLTLNPPLDTMADGLSLEEQV
 TGEGADRELLVGDSIANSTDLFDEIVTATTESGDLELVHSTPGANVLELLPIVMQEEGSSVVVERAVQT
 DVVPYSPAISELIQSVLQKLQDPCPSSLASPDESEPDMSMFPELSALVVDLTPRNPNSAILLSPVETP
 YANVDAEVHANRLMRELDFAACVEERLDGVIPLARGGVVRQYWSSSFLVDLLAVAAPVVPTVLWAFSTQR
 GGTDPVYNI GALLRGCCVVALHSLRRTAFRIKT

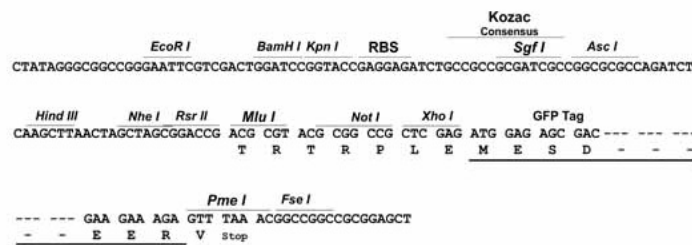
TRTRPLE - GFP Tag - V

Restriction Sites:

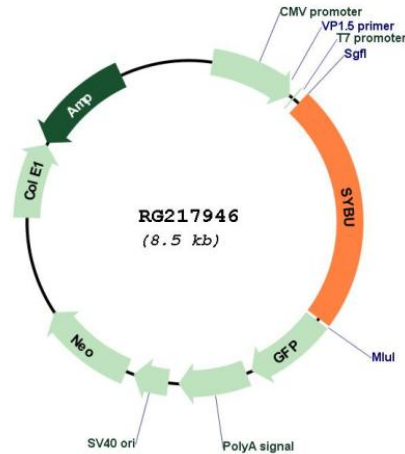
SgfI-MluI

Cloning Scheme:

Cloning sites used for ORF Shuttling:



Plasmid Map:



ACCN: NM_001099745

ORF Size: 1989 bp

OTI Disclaimer: The molecular sequence of this clone aligns with the gene accession number as a point of reference only. However, individual transcript sequences of the same gene can differ through naturally occurring variations (e.g. polymorphisms), each with its own valid existence. This clone is substantially in agreement with the reference, but a complete review of all prevailing variants is recommended prior to use. [More info](#)

OTI Annotation: This clone was engineered to express the complete ORF with an expression tag. Expression varies depending on the nature of the gene.

Components: The ORF clone is ion-exchange column purified and shipped in a 2D barcoded Matrix tube containing 10ug of transfection-ready, dried plasmid DNA (reconstitute with 100 ul of water).

Reconstitution Method:

1. Centrifuge at 5,000xg for 5min.
2. Carefully open the tube and add 100ul of sterile water to dissolve the DNA.
3. Close the tube and incubate for 10 minutes at room temperature.
4. Briefly vortex the tube and then do a quick spin (less than 5000xg) to concentrate the liquid at the bottom.
5. Store the suspended plasmid at -20°C. The DNA is stable for at least one year from date of shipping when stored at -20°C.

RefSeq: [NM_001099745.2](#)

RefSeq Size: 3087 bp

RefSeq ORF: 1992 bp

Locus ID: 55638

UniProt ID: [Q9NX95](#)

Cytogenetics: 8q23.2

Gene Summary: Syntabulin/GOLSYN is part of a kinesin motor-adaptor complex that is critical for the anterograde axonal transport of active zone components and contributes to activity-dependent presynaptic assembly during neuronal development (Cai et al., 2007 [PubMed 17611281]).[supplied by OMIM, Mar 2008]