

## Product datasheet for **RG217939**

### **RAP1GDS1 (NM\_001100429) Human Tagged ORF Clone**

#### **Product data:**

Product Type:	Expression Plasmids
Product Name:	RAP1GDS1 (NM_001100429) Human Tagged ORF Clone
Tag:	TurboGFP
Symbol:	RAP1GDS1
Synonyms:	GDS1; SmgGDS
Mammalian Cell Selection:	Neomycin
Vector:	pCMV6-AC-GFP (PS100010)
E. coli Selection:	Ampicillin (100 ug/mL)



[View online »](#)

**ORF Nucleotide Sequence:**

>RG217939 representing NM\_001100429  
 Red=Cloning site Blue=ORF Green=Tags(s)

TTTTGTAATACGACTCACTATAGGGCGGCCGGAATTCGTCGACTGGATCCGGTACCGAGGAGATCTGCC  
 GCC**CGCATCGCC**

ATGGATAATCTCAGTGATACCTGAAGAAGCTGAAGATAACAGCTGTTGACAAGACTGAGGATAGTTTAG  
 AAGGATGCTTGGATTGTCTGCTTCAAGCCTGGCTCAAAAATAACGGAACAAGTGAAAAATCCAAGC  
 AAGTGAATACTTCAGCTGTTTGAAGTCTGTTGACTCCACAGTCTTCTGCAAAGCCAAAGTAGCTAAC  
 ATCATAGCAGAAGTAGCCAAAAATGAGTTTATGCGAATCCATGTGTGGATGCTGGATTGATTTACCAC  
 TGGTGCAGCTGCTAAATAGCAAAGACCAGGAAGTCTGCTTCAAACGGGCAGGGCTCTAGGAAACATATG  
 TTACGATAGCCATTTCGTTCAAGCTCAGCTTATCAATATGGGTGTTATTCTACCTTAGTAAATTAAGT  
 GGCATCCACTGCCAAAATGCAGCTCTTACAGAAATGTGCTTGTGCTTTGGTAATTTAGCAGAACTTG  
 AGTCAAGTAAAGAACAGTTTGCCAGTACAACATTGCTGAAGAGCTAGTAAAACCTTCAAGAAACAAAT  
 AGAACATGATAAGAGAGAAATGATTTTTGAAGTCTTGTCTCCATTGGCAGAAAATGATGCTATTAAC  
 CAGCTGGTTGAAGCAGGCCTAGTAGAGTGTCTACTAGAGATTGTTGAGCAAAAAGTGGATAGTGACAAAG  
 AAGATGATATTACTGAGCTCAAACTGGTTCAGATCTCATGGTTTTATTCTTCTGGAGATGAATCCAT  
 GCAGAAGTATTTGAAGGAGGAAAAGGTAGTGTATTTCAAAGGACTCTCTTGGATCCCATCAAATAAC  
 CACCAGCTACAGCTTGTGGAGCATTGGCAATTGCAAAATTTGCCAGAAATGATGCAAAATGTTATTCATA  
 TGGTAGACAAATGGGATTGTAGAAAACTTATGGATTTACTGGACAGACATGTAGAAGATGGAAATGTAAC  
 AGTACAGCATGCAGCACTAAGTGCCTCAGAAACCTGGCCATTCCAGTTATAAATAAGCAAAGATGTTA  
 TCAGCTGGGGTACAGAGGCAGTTTTGAAATTTCTTAAATCTGAAATGCCTCTGTTCAAGTCAAACCTC  
 TGGGAACATTAAGAATGTTAATAGATGCACAAGCAGAAGCTGCTGAACAATGGGAAAGAATGTTAAGT  
 AGTGGAGCGTTTTGGTGAATGGTGTGAAGCCAAAGATCATGCTGGTGTGATGGGGAGTCAAACAGACTG  
 CTGTCTGCCCTTATACGACACAGTAAATCAAAGATGTAATTAACCATTGTGCAGAGTGGTGGCATCA  
 AGCATCTAGTTACCATGGCAACTAGTGAACATGTAATAATGCAGAATGAAGCTCTTGTGCTTTGGCATT  
 AATAGCAGCTTTAGAATTGGGCACTGCTGAGAAAGATCTAGAAAGTCTAAACTTGTACAGATTTTACAT  
 AGACTGCTAGCAGATGAGAGAAGTCTCCTGAAATCAAATATAATTCCATGGTCTGATATGTGCTCTTA  
 TGGGATCTGAATGTCTACACAAGGAAGTACAGGATTTGGCTTTTCTAGATGTCGATCCAAACTTCGCAG  
 TCATGAGAACAAAAGTGTGCCAGCAGGCCTCTCTCACAGAGCAGAGACTTACTGTGAAAAGC

**ACGCGTACGCGGCCGCTCGAG** - GFP Tag - GTTTAA

**Protein Sequence:**

>RG217939 representing NM\_001100429  
 Red=Cloning site Green=Tags(s)

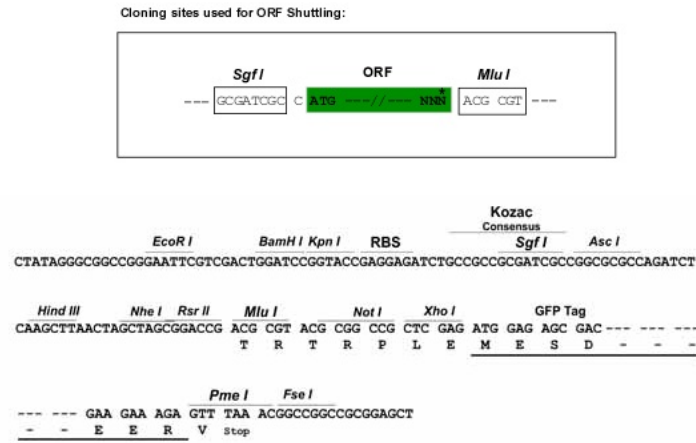
MDNLSDTLKKLKITAVDKTEDSLEGCLDCLLQALAQNNTESEKIQASGILQLFASLLTPQSSCKAKVAN  
 IIAEVAKNEFMRI PCVDAGLISPLVQLLNSKDQEVLLQTGRALGNICYDSHSLQAQLINMGVIPTLVKLL  
 GIHCQNAALTEMCLVAFGNLAELESSKEQFASTNIAEELVKLFKKQIEHDKREMI FEVLAPLAENDAIKL  
 QLVEAGLVECLLEIVQKQVDSKEDDITELKTGSDLMVLLLLGDESMQKLFEGGKGSVFQRVLSWIPSN  
 HQLQLAGALAIANFARNDANCIHMVDNGIVEKLMDLLDRHVEDGNVTVQHAALSALRNLAIPVINKAKML  
 SAGVTEAVLFLKSEMPVQFKLLGTLRMLIDAQAEAAEQLGKNVKLVERLVEWCEAKDHAGVMGESNRL  
 LSALIRHSKSKDVIKTI VQSGGIKHLVTMATSEHVIMQNEALVALALIAALELGTAEKDLES AKLVQILH  
 RLLADERSAPEIKYNSMVLICALMGSECLHKEVQDLAFLDVVSKLRSHENKSVAAQASL TEQRLTVES

**TRTRPLE** - GFP Tag - V

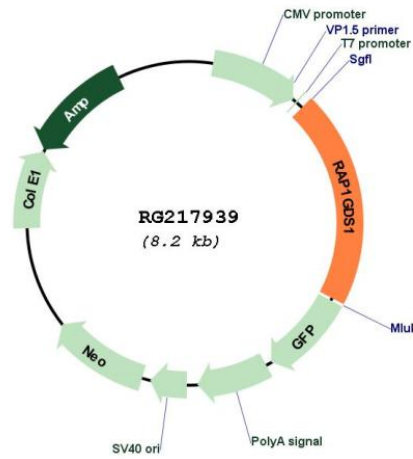
**Restriction Sites:**

Sgfl-Mlul

Cloning Scheme:



Plasmid Map:



<b>ACCN:</b>	NM_001100429
<b>ORF Size:</b>	1674 bp
<b>OTI Disclaimer:</b>	The molecular sequence of this clone aligns with the gene accession number as a point of reference only. However, individual transcript sequences of the same gene can differ through naturally occurring variations (e.g. polymorphisms), each with its own valid existence. This clone is substantially in agreement with the reference, but a complete review of all prevailing variants is recommended prior to use. <a href="#">More info</a>
<b>OTI Annotation:</b>	This clone was engineered to express the complete ORF with an expression tag. Expression varies depending on the nature of the gene.
<b>Components:</b>	The ORF clone is ion-exchange column purified and shipped in a 2D barcoded Matrix tube containing 10ug of transfection-ready, dried plasmid DNA (reconstitute with 100 ul of water).
<b>Reconstitution Method:</b>	<ol style="list-style-type: none"><li>1. Centrifuge at 5,000xg for 5min.</li><li>2. Carefully open the tube and add 100ul of sterile water to dissolve the DNA.</li><li>3. Close the tube and incubate for 10 minutes at room temperature.</li><li>4. Briefly vortex the tube and then do a quick spin (less than 5000xg) to concentrate the liquid at the bottom.</li><li>5. Store the suspended plasmid at -20°C. The DNA is stable for at least one year from date of shipping when stored at -20°C.</li></ol>
<b>RefSeq:</b>	<a href="#">NM_001100429.2</a>
<b>RefSeq Size:</b>	3620 bp
<b>RefSeq ORF:</b>	1677 bp
<b>Locus ID:</b>	5910
<b>UniProt ID:</b>	<a href="#">P52306</a>
<b>Cytogenetics:</b>	4q23
<b>Gene Summary:</b>	The smg GDP dissociation stimulator (smgGDS) protein is a stimulatory GDP/GTP exchange protein with GTPase activity (Riess et al., 1993 [PubMed 8262526]).[supplied by OMIM, Feb 2010]