

Product datasheet for **RG217935**

LILRB2 (NM_001080978) Human Tagged ORF Clone

Product data:

Product Type:	Expression Plasmids
Product Name:	LILRB2 (NM_001080978) Human Tagged ORF Clone
Tag:	TurboGFP
Symbol:	LILRB2
Synonyms:	CD85D; ILT-4; ILT4; LIR-2; LIR2; MIR-10; MIR10
Mammalian Cell Selection:	Neomycin
Vector:	pCMV6-AC-GFP (PS100010)
E. coli Selection:	Ampicillin (100 ug/mL)



[View online »](#)

ORF Nucleotide Sequence:

>RG217935 representing NM_001080978
 Red=Cloning site Blue=ORF Green=Tags(s)

TTTTGTAATACGACTCACTATAGGGCGGCCGGAATTCGTCGACTGGATCCGGTACCGAGGAGATCTGCC
 GCC**CGGATCGCC**

ATGACCCCATCGTCACAGTCTGATCTGTCTCGGGCTGAGTCTGGGCCCCAGGACCCACGTGCAGACAG
 GGACCATCCCAAGCCCACCCTGTGGGCTGAGCCAGACTCTGTGATCACCCAGGGGAGTCCCGTCAACCT
 CAGTTGTCAGGGGAGCCTTGAAGCCCAGGAGTACCGTCTATATAGGGAGAAAAAATCAGCATCTTGATT
 ACACGGATACGACCAGAGCTTGTGAAGAACGGCCAGTCCACATCCATCCATCACCTGGGAACACACAG
 GGCGATATGGCTGTCAGTATTACAGCCGCGCTCGGTGGTCTGAGCTCAGTGACCCCTGGTCTGGTGTGAT
 GACAGGAGCTACCCAAAACCCACCCTCTCAGCCAGCCAGCCCTGTGGTGACCTCAGGAGGAAGGGTG
 ACCCTCCAGTGTGAGTCACAGTGGCATTGGCGGCTTATTCTGTGAAGGAAGGAGAAGTGAACACC
 CACAATGCCTGAACCTCCAGCCCATGCCCGTGGGTCTGCCGCGCCATCTTCCGTGGCCCCGTGAG
 CCCGAATCGCAGGTGGTGCACAGTGTATGGTTATGACTTGAACCTCCCTATGTGTGGTCTTACCC
 AGTGATCTCCTGGAGCTCCTGGTCCCAGGTGTTCTAAGAAGCCATCACTCTCAGTGCAGCCGGTCTCTG
 TCGTGGCCCTGGGAAAGCCTGACCTCCAGTGTCTCTGATGTGGGCTATGACAGATTTGTTCTGTA
 CAAGGAGGGGAAAGCTGACCTTCGCCAGCTCCCTGGCCGCGAGCCCAGGCTGGGCTCTCCAGGCCAAC
 TTCACCTGGGCCCTGTGAGCCGCTCTACGGGGCCAGTACAGATGCTACGGTGCATACAACCTCTCT
 CCGAGTGGTGGCCCCAGCGACCCCTGGACATCCTGATCACAGGACAGATCCATGGCACACCTTCAT
 CTCAGTGCAGCCAGGCCACAGTGGCTCAGGAGAGAACGTGACCTGCTGTGTGATCATGGCGGCAG
 TTCCACACTTTCCTTCTGACCAAGGCGGGAGCAGTGTGACCTCAGCCACGCGGGGACCTACAGGTGCTA
 CGGCTCACTCAACTCCGACCCCTACCTGCTGTCTCACCCAGTGAAGCCCTGGAGCTCGTGGTCTCAGGA
 CCCTCCATGGGTTCCAGCCCCCACCACCGGTCCCATCTCCACACCTGCAGGCCCTGAGGACCAGCCCC
 TCACCCCACTGGGTGGATCCCAAGTGGTCTGGGAAGGCACCTGGGGTTGTGATCGGCATCTTGGT
 GGCCGTCGTCCTACTGCTCCTCCTCCTCCTCCTCCTCCTCCTCCTCCTCCTCCTCCTCCTCCTCCTCCT
 CACTGGACATCAACCCAGAGAAAGGCTGATTTCCAACATCCTGCAGGGGCTGTGGGGCCAGAGCCCACAG
 ACAGAGGCTGCAGTGGAGTCCAGCCAGCTGCCAGCCAGGAAGAAAACCTCTATGCTGCCGTGAA
 GGACACACAGCCTGAAGATGGGGTGGAGATGGACTCGGGCTGCTGCATCTGAAGCCCCCAGGATGTG
 ACCTACGCCAGCTGCACAGCTTACCCTCAGACGGAAGGCAACTGAGCCTCCTCCATCCCAGGAAGGGG
 AACCTCCAGTGAAGCCAGCATCTACGCCACCCTGGCCATCCAC

ACGCGTACGCGGCCGCTCGAG - GFP Tag - GTTTAA

Protein Sequence:

>RG217935 representing NM_001080978
 Red=Cloning site Green=Tags(s)

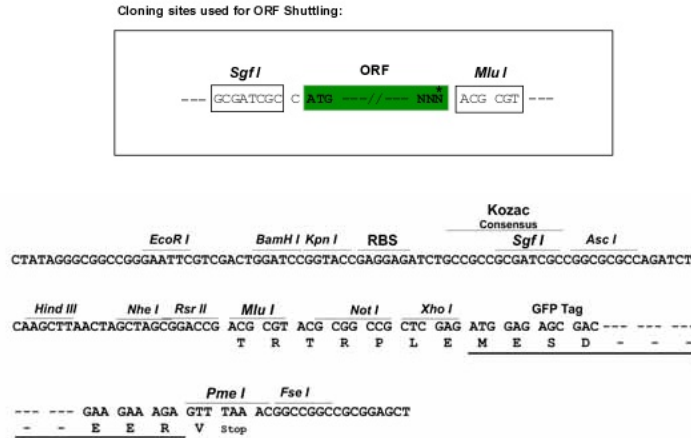
MTPIVTVLICLGLSLGPRTHVQTGTIPKPTLWAEPSVITQGSPVTLSCQGSLEAQEYRLYREKKSASWI
 TRIRPELVKNGQFHIPSITWEHTGRYGCQYYSRARWSELSDPLVLMTGAYPKPTLSAQSPVVTSGGRV
 TLQCESQVAFGGFILCKEGEDHPQCLNSQPHARGSSRAIFSVGPVSPNRRWSHRCYGYDLNSPYVWSSP
 SDLLELLVPGVSKKPSLSVQPGPVVAPGESLTLQCVSDVGYDRFVLYKEGERDLRQLPGRQPQAGLSQAN
 FTLGPVRSYGGQYRCYGAYNLSSEWSAPSDPLDILITGQIHGTPFISVQPGPTVASGENVTLLCQSWRQ
 FHTFLLTKAGAADAPLRLRSIHEYPKYQAEFPMSPVTSAHAGTYRCYGLNSDPYLLSHPSEPLELVVSG
 PSMGSSPPPTGPISTPAGPEDQPLTPTGSDPQSGLGRHLGVVIGILVAVVLLLLLLLLLFLILRHRRQGK
 HWTSTQRKADFQHPAGAVGPEPTDRGLQWRSSPAADAQEENLYAAVKDTQPEDGVEMDTRAAASEAPQDV
 TYAQLHSLTLRRKATEPPPSQEGEPPAEPESIYATLAIH

TRTRPLE - GFP Tag - V

Restriction Sites:

Sgfl-MluI

Cloning Scheme:



ACCN: NM_001080978

ORF Size: 1794 bp

OTI Disclaimer: Due to the inherent nature of this plasmid, standard methods to replicate additional amounts of DNA in E. coli are highly likely to result in mutations and/or rearrangements. Therefore, OriGene does not guarantee the capability to replicate this plasmid DNA. Additional amounts of DNA can be purchased from OriGene with batch-specific, full-sequence verification at a reduced cost. Please contact our customer care team at custsupport@origene.com or by calling 301.340.3188 option 3 for pricing and delivery.

The molecular sequence of this clone aligns with the gene accession number as a point of reference only. However, individual transcript sequences of the same gene can differ through naturally occurring variations (e.g. polymorphisms), each with its own valid existence. This clone is substantially in agreement with the reference, but a complete review of all prevailing variants is recommended prior to use. [More info](#)

OTI Annotation: This clone was engineered to express the complete ORF with an expression tag. Expression varies depending on the nature of the gene.

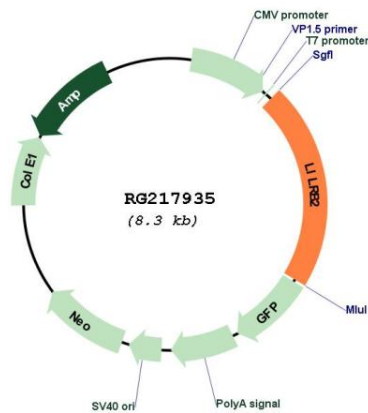
Components: The ORF clone is ion-exchange column purified and shipped in a 2D barcoded Matrix tube containing 10ug of transfection-ready, dried plasmid DNA (reconstitute with 100 ul of water).

- Reconstitution Method:**
1. Centrifuge at 5,000xg for 5min.
 2. Carefully open the tube and add 100ul of sterile water to dissolve the DNA.
 3. Close the tube and incubate for 10 minutes at room temperature.
 4. Briefly vortex the tube and then do a quick spin (less than 5000xg) to concentrate the liquid at the bottom.
 5. Store the suspended plasmid at -20°C. The DNA is stable for at least one year from date of shipping when stored at -20°C.

RefSeq: NM_001080978.1, NP_001074447.1
RefSeq Size: 2910 bp
RefSeq ORF: 1794 bp
Locus ID: 10288
Cytogenetics: 19q13.42
Protein Families: Transmembrane
Gene Summary:

This gene is a member of the leukocyte immunoglobulin-like receptor (LIR) family, which is found in a gene cluster at chromosomal region 19q13.4. The encoded protein belongs to the subfamily B class of LIR receptors which contain two or four extracellular immunoglobulin domains, a transmembrane domain, and two to four cytoplasmic immunoreceptor tyrosine-based inhibitory motifs (ITIMs). The receptor is expressed on immune cells where it binds to MHC class I molecules on antigen-presenting cells and transduces a negative signal that inhibits stimulation of an immune response. It is thought to control inflammatory responses and cytotoxicity to help focus the immune response and limit autoreactivity. Multiple transcript variants encoding different isoforms have been found for this gene. [provided by RefSeq, Jul 2008]

Product images:



Circular map for RG217935