

Product datasheet for **RG217934**

IRF7 (NM_001572) Human Tagged ORF Clone

Product data:

Product Type:	Expression Plasmids
Product Name:	IRF7 (NM_001572) Human Tagged ORF Clone
Tag:	TurboGFP
Symbol:	IRF7
Synonyms:	IMD39; IRF-7; IRF-7H; IRF7A; IRF7B; IRF7C; IRF7H
Mammalian Cell Selection:	Neomycin
Vector:	pCMV6-AC-GFP (PS100010)
E. coli Selection:	Ampicillin (100 ug/mL)



[View online »](#)

ORF Nucleotide Sequence:

>RG217934 representing NM_001572.
 Blue=ORF Red=Cloning site Green=Tag(s)

```

GCTCGTTTAGTGAACCGTCAGAATTTTGTAAACGACTCACTATAGGGCGGCCGGGAATTCGTGACTG
GATCCGGTACCGAGGAGATCTGCCGCCCGCATCGCC
ATGGCCTTGGCTCCTGAGAGGGCAGCCCCACGCTGCTGTTCCGAGAGTGGCTCCTTGGAGAGATCAGC
AGCGGCTGCTATGAGGGGCTGCAGTGGCTGGACGAGGCCCGCACCTGTTCCGCGTGCCCTGGAAGCAC
TTCGCGCGCAAGGACCTGAGCGAGGCCGACGCGCGCATCTTCAAGGCCTGGGCTGTGCCCGCGGCAGG
TGGCCGCCTAGCAGCAGGGGAGGTGGCCCGCCCCGAGGCTGAGACTGCGGAGCGCGCCGCTGGAAA
ACCAACTTCCGCTGCGCACTGCGCAGCAGCGTTCGTTGATGCTGCGAGATAACTCGGGGGACCCG
GCCGACCCGCACAAGGTGTACGCGCTCAGCCGGGAGCTGTGCTGGCGAGAAGGCCAGGCACGGACCAG
ACTGAGGCAGAGGCCCGCAGCTGTCCACCACCACAGGGTGGGCCCCAGGGCCATTCTTGGCACAC
ACACATGCTGGACTCCAAGCCCCAGGCCCTCCCTGCCCCAGCTGGTGACAAGGGGGACCTCTGCTC
CAGGCAGTGCAACAGAGTGCCTGGCAGACCATCTGCTGACAGCGTCATGGGGGGCAGATCCAGTCCCA
ACCAAGGCTCCTGGAGAGGGACAAGAAGGGCTTCCCCTGACTGGGGCCTGTGCTGGAGGCCAGGGCTC
CCTGCTGGGGAGCTGTACGGGTGGGCAGTAGAGACGACCCCCAGCCCCGGGCCCCAGCCCCGGGCACTA
ACGACAGGCGAGGCCCGGCCCCAGAGTCCCCGCACCAGGCAGAGCCGTACCTGTACCCTCCCCAAGC
GCCTGCACCGCGGTGCAAGAGCCAGCCAGGGGCGCTGGACGTGACCATCATGTACAAGGGCCGCACG
GTGCTGCAGAAGGTGGTGGGACACCCGAGCTGCACGTTCTATAACGGCCCCCAGACCCAGCTGTCCGG
GCCACAGACCCCCAGCAGGTAGCATTCCCAGCCCTGCCGAGCTCCCGGACCAGAAGCAGCTGCGCTAC
ACGGAGGAAGTGTGCGGCACGTGGCCCTGGGTTGCACCTGGAGCTTCGGGGGCCACAGCTGTGGGCC
CGGCGCATGGGCAAGTGAAGGTGTACTGGGAGTGGCGGACCCCAAGGCTCCGCCAGCCCTCCACC
CCAGCTGCCTGCTGCCCGAACTGTGACACCCCATCTTCGACTTCAGAGTCTTCTTCAAGAGCTG
GTGGAATTCGGGACCGGCAGCGCGTGGCTCCCACGCTATACCATCTACCTGGGCTTCGGGCAGGAC
CTGTCAGCTGGGAGGCCAAGGAGAAGAGCCTGGTCTGGTGAAGCTGGAACCCTGGCTGTGCCAGTG
CACCTAGAGGGCACGCAGCGTGAGGGTGTGCTTCCCTGGATAGCAGCAGCCTCAGCCTCTGCCTGTCC
AGCGCCAACAGCCTCTATGACGACATCGAGTGCTTCTTATGGAGCTGGAGCAGCCCCGCC
AGCGGACCGACGCGTACGCGGCCGCTCGAG - GFP Tag - GTTTAAAC
  
```

Protein Sequence:

>Peptide sequence encoded by RG217934
 Blue=ORF Red=Cloning site Green=Tag(s)

```

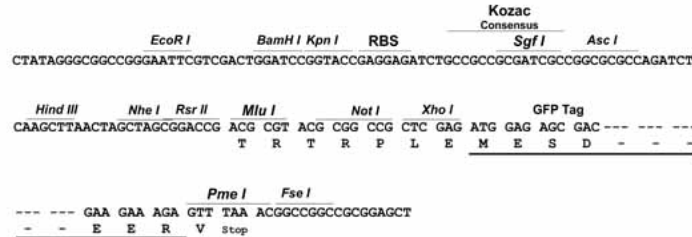
MALAPERAAPRVLFGEWLLGEISSGCEGLQWLDEARTCFRVPWKHFARKDLSEADARIFKAWAVARGR
WPPSSRGGGPPPEAETAERAGWKTNFRCALRSTRRFVMLRDNSGDPADPHKVYALSRELCWREGPGTDQ
TEAEAPAAVPPPQGGPPGFLAHTHAGLQAPGPLPAPAGDKDLLLLQAVQQSCLADHLLTASWGADPVP
TKAPGEGQGLPLTGACAGGGLPAGELYGWAVETTPSPGPQPAALTTGAAAPESPHQAEPLYSPSPS
ACTAVQEPSGALDVTIMYKGRIVLQKVVGHPSCTFLYGPDPAVRATDPQQVAFPSAELPDQKQLRY
TEELLRHVAPGLHLELRGPQLWARRMGKCKVYWEVGGPPGASPSSTPAALLPRNCDTPIFDVRFVQEL
VEFRARQRRGSPRYTIYLGFGQDL SAGRPKESLVLVKLEPWL CRVHLEGTQREGVSSLDSSSLSLCLS
SANSLYDDIECFLEMELEQPA
SGPTRTRPLEMESDESGLPAMEIECRITGTLNGVEFELVGGEGTPEQGRMTNKMSTKGALTFSPYLL
SHVMGYGFYHFGTYPSTYENPFLHAINNGGYNTRIEKYEDGGVLHVSFSYRYEAGRVIGDFKVMGTGF
PEDSVIFTDKIIRS NATVEHLHPMGDNDLDGSFTRTFSLRDGGYSSVVD SHMHFKSAIHPSILQNGGP
MFAFRRVEEDHSNTELGIVEYQHAFKTPDADAGEERV
  
```

Restriction Sites:

Sgfl-RsrII

Cloning Scheme:

Cloning sites used for ORF Shuttling:


ACCN: NM_001572

ORF Size: 1509 bp

OTI Disclaimer: The molecular sequence of this clone aligns with the gene accession number as a point of reference only. However, individual transcript sequences of the same gene can differ through naturally occurring variations (e.g. polymorphisms), each with its own valid existence. This clone is substantially in agreement with the reference, but a complete review of all prevailing variants is recommended prior to use. [More info](#)

OTI Annotation: This clone was engineered to express the complete ORF with an expression tag. Expression varies depending on the nature of the gene.

Components: The ORF clone is ion-exchange column purified and shipped in a 2D barcoded Matrix tube containing 10ug of transfection-ready, dried plasmid DNA (reconstitute with 100 ul of water).

Reconstitution Method:

1. Centrifuge at 5,000xg for 5min.
2. Carefully open the tube and add 100ul of sterile water to dissolve the DNA.
3. Close the tube and incubate for 10 minutes at room temperature.
4. Briefly vortex the tube and then do a quick spin (less than 5000xg) to concentrate the liquid at the bottom.
5. Store the suspended plasmid at -20°C. The DNA is stable for at least one year from date of shipping when stored at -20°C.

RefSeq Size: 1890 bp

RefSeq ORF: 1512 bp

Locus ID: 3665

UniProt ID: [Q92985](#)
Cytogenetics: 11p15.5

Domains: IRF

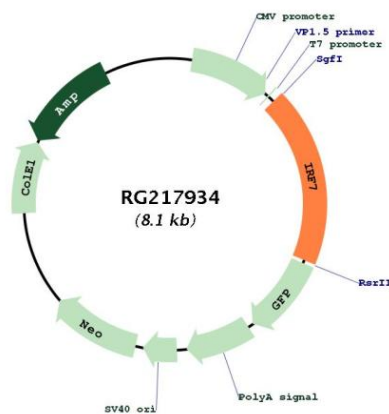
Protein Families: Transcription Factors

Protein Pathways: Cytosolic DNA-sensing pathway, RIG-I-like receptor signaling pathway, Toll-like receptor signaling pathway

MW: 54.3 kDa

Gene Summary: IRF7 encodes interferon regulatory factor 7, a member of the interferon regulatory transcription factor (IRF) family. IRF7 has been shown to play a role in the transcriptional activation of virus-inducible cellular genes, including interferon beta chain genes. Inducible expression of IRF7 is largely restricted to lymphoid tissue. Multiple IRF7 transcript variants have been identified, although the functional consequences of these have not yet been established. [provided by RefSeq, Jul 2008]

Product images:



Circular map for RG217934