

## Product datasheet for **RG217904**

### GPR86 (P2RY13) (NM\_023914) Human Tagged ORF Clone

#### Product data:

Product Type:	Expression Plasmids
Product Name:	GPR86 (P2RY13) (NM_023914) Human Tagged ORF Clone
Tag:	TurboGFP
Symbol:	GPR86
Synonyms:	FKSG77; G-protein coupled receptor 94; GPCR1; GPCR1, GPR86, GPR94, P2Y13, SP174, FKSG77; GPR86; GPR94; G protein-coupled receptor 86; P2Y13; P2Y purinoceptor 13; purinergic receptor P2Y, G-protein coupled, 13; SP174
Mammalian Cell Selection:	Neomycin
Vector:	pCMV6-AC-GFP (PS100010)
E. coli Selection:	Ampicillin (100 ug/mL)
ORF Nucleotide Sequence:	>RG217904 representing NM_023914 Red=Cloning site Blue=ORF Green=Tags(s)

TTTTGTAATACGACTCACTATAGGGCGGCCGGAATTCGTCGACTGGATCCGGTACCGAGGAGATCTGCC  
GCC**CGGATCGCC**

ATGAACACCACAGTGATGCAAGGCTTCAACAGATCTGAGCGGTGCCCCAGAGACTCGGATAGTACAGC  
TGGTATCCCAGCCCTCTACACAGTGGTTTTCTTGACCGGCATCTGCTGAATACTTTGGCTCTGTGGGT  
GTTTGTTACATCCCAGCTCCTCCACCTTCATCATCTACCTCAAAAACCTTTGGTGGCCGACTTGATA  
ATGACTCATGCTTCTTTCAAATCCTCTGACTCACACCTGGCACCTGGCAGCTCAGAGCTTTTG  
TGTGTCGTTTTCTTCGGTGATTTTTATGAGACCATGTATGTGGGCATCGTGTGTTAGGGCTCATAGC  
CTTTGACAGATTCCTCAAGATCATCAGACCTTTGAGAAATATTTTTCTAAAAAACCTGTTTTGCAAAA  
ACGGTCTCAATCTTCATCTGGTTCTTTTGTCTTCATCTCCCTGCCAAATACGATCTTGAGCAACAAGG  
AAGCAACACCATCGTCTGTGAAAAAGTGTGCTTCTTAAAGGGCCTCTGGGGCTGAAATGGCATCAAT  
GGTAAATAACATATGCCAGTTTATTTTCTGGACTGTTTTATCCTAATGCTTGTGTTTTATGTGGTTATT  
GCAAAAAAAGTATATGATTCTTATAGAAAGTCCAAAAGTAAAGGACAGAAAAACAACAAAAGCTGGAAG  
GCAAAAGTATTTGTGTCGTGGCTGTCTTTTGTGTTTTGCTCCATTTTCAATTTGCCAGAGTTCCATA  
TACTCACAGTCAAACCAACAATAAGACTGACTGTAGACTGCAAAATCAACTGTTTATTGCTAAAGAAACA  
ACTCTCTTTTGGCAGCAACTAACATTTGTATGGATCCCTTAATATACATATTCTTATGTAATAAATTC  
CAGAAAAGCTACCATGTATGCAAGGGAGAAAGACCACAGCATCAAGCCAAGAAAATCATAGCAGTCAGAC  
AGACAACATAACCTTAGGC

**ACGCGT**ACGCGGCCGCTCGAG - GFP Tag - GTTTAA



[View online »](#)

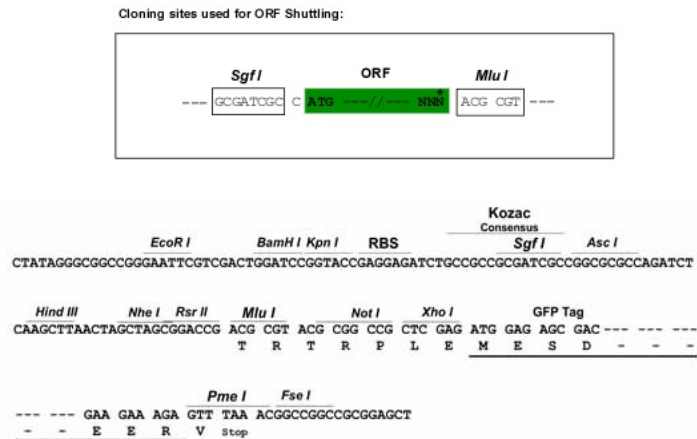
**Protein Sequence:** >RG217904 representing NM\_023914  
Red=Cloning site Green=Tags(s)

MNTTVMQGFNRSERCPDRTRIVQLVFPALYTVVFLTGILLNLTALWVVFVHIPSSSTFIIYLKNTLVADLI  
 MTLMLPFKILSDSHLAPWQLRAFVCRFSSVIFYETMYVGVILLGLIAFDRFLKIIRPLRNIFLKKPVFAK  
 TVSIFIWFLLFFISLPNTILSNKEATPSSVKKCASLKGPLGLKWHQMVNNICQFIFWTVFILMLVFYVVI  
 AKKVYDSYRKS SKDRKNNKKLEGVFVVVAVFVCFAPFHFARVPYTHSQTNNKTDCLRNQLFIAKET  
 TLFLAATNICMDPLIYIFLCKKFTEKLPCMQRKTTASSQENHSSQTDNITLG

TRTRPLE - GFP Tag - V

**Restriction Sites:** SgfI-MluI

**Cloning Scheme:**



**ACCN:** NM\_023914

**ORF Size:** 999 bp

**OTI Disclaimer:** The molecular sequence of this clone aligns with the gene accession number as a point of reference only. However, individual transcript sequences of the same gene can differ through naturally occurring variations (e.g. polymorphisms), each with its own valid existence. This clone is substantially in agreement with the reference, but a complete review of all prevailing variants is recommended prior to use. [More info](#)

**OTI Annotation:** This clone was engineered to express the complete ORF with an expression tag. Expression varies depending on the nature of the gene.

**Components:** The ORF clone is ion-exchange column purified and shipped in a 2D barcoded Matrix tube containing 10ug of transfection-ready, dried plasmid DNA (reconstitute with 100 ul of water).

**Reconstitution Method:**

1. Centrifuge at 5,000xg for 5min.
2. Carefully open the tube and add 100ul of sterile water to dissolve the DNA.
3. Close the tube and incubate for 10 minutes at room temperature.
4. Briefly vortex the tube and then do a quick spin (less than 5000xg) to concentrate the liquid at the bottom.
5. Store the suspended plasmid at -20°C. The DNA is stable for at least one year from date of shipping when stored at -20°C.

**RefSeq:** [NM\\_023914.2](#), [NP\\_076403.2](#)

**RefSeq Size:** 2858 bp

**RefSeq ORF:** 1001 bp

**Locus ID:** 53829

**Cytogenetics:** 3q25.1

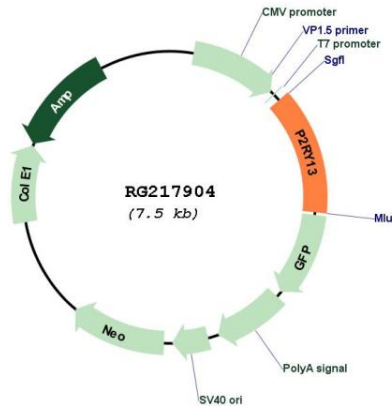
**Domains:** 7tm\_1

**Protein Families:** Druggable Genome, GPCR, Transmembrane

**Protein Pathways:** Neuroactive ligand-receptor interaction

**Gene Summary:** The product of this gene belongs to the family of G-protein coupled receptors. This family has several receptor subtypes with different pharmacological selectivity, which overlaps in some cases, for various adenosine and uridine nucleotides. This receptor is activated by ADP. [provided by RefSeq, Sep 2008]

**Product images:**



Circular map for RG217904