

Product datasheet for **RG217903**

Phospholipase C beta 4 (PLCB4) (NM_182797) Human Tagged ORF Clone

Product data:

Product Type:	Expression Plasmids
Product Name:	Phospholipase C beta 4 (PLCB4) (NM_182797) Human Tagged ORF Clone
Tag:	TurboGFP
Symbol:	Phospholipase C beta 4
Synonyms:	ARCND2; PI-PLC
Mammalian Cell Selection:	Neomycin
Vector:	pCMV6-AC-GFP (PS100010)
E. coli Selection:	Ampicillin (100 ug/mL)
ORF Nucleotide Sequence:	>RG217903 representing NM_182797 Red=Cloning site Blue=ORF Green=Tags(s)

TTTTGTAATACGACTCACTATAGGGCGGCCGGAATTCGTCGACTGGATCCGGTACCGAGGAGATCTGCC
GCC**CGATCGCC**

ATGGCCAAACCTTATGAATTTAACTGGCAGAAGGAAGTCCCTCCTTTTTGCAAGAAGGAACAGTTTTTG
ACAGATACGAGGAGGAATCCTTTGTGTTTGAACCAACTGCCTCTTCAAAGTGGATGAGTTTGGCTTCTT
TCTGACATGGAGAAGTGAAGGCAAGGAAGGACAGGTGCTAGAATGCTCCCTCATCAACAGTATTCGGTGC
GGAGCCATACCAAAGGATCCAAAATCTTGGCTGCTCTTGAAGCTGTTGAAAATCAGAAAATGATCTGG
AAGGGCGGATAGTTTGTGCTGCACTGGCAGACATCTAGTGAACATTAGTTTTACCTACATGGTGGCTGA
AAATCCAGAAGTAACTAAGCAATGGGTAGAAGGCCTGAGATCAATCATACACAACCTCAGGGCCAACAAC
GTCAGTCCAATGACATGCCTCAAGAAACTGGATGAAATTGGCATTATGACCAACACAATGGTAAAA
TTCCAGTTAGGAGTATTACTAGAACATTTGCATCGGAAAAACAGAAAAGGTGATCTTTCAAGCACTCAA
GGAGTTAGGTCTTCCAGTGGAAAGATGATGAAATTGAGCCACAGCATTTTCTTATGAAAAGTTCTAT
GAACTGACACAAAAGATTTGTCTCGGACAGATATAGAAGATCTTTCAAAAAATCAATGGAGACAAAA
CTGATTATTTAACGGTAGACCAATTAGTGAGCTTCTAAATGAACATCAACGAGATCCTCGATTGAATGA
AATTTTATTTCCATTTTATGATGCCAAAAGGGCAATGCAGATCATTGAGATGTATGAACCTGATGAAGAT
TTGAAGAAAAAGGCCTTATATCAAGTGTGGTTTTGCGAGATCTGATGTCAGATGAAAACGCCCCAG
TCTTCTAGATCGTTTAGAACTTTACCAAGAAATGGACCATCCTCTGGCTCACTACTTCATCAGTTCTTC
CCATAACACTTATCTCACTGGCAGACAGTTGCGCGGGAAGTCTTCGGTAGAAATGTACAGACAGGTTCTC
CTGGCTGGTTGCAGATGTGTTGAACTTGACTGCTGGGATGGAAAAGGTGAAGACCAAGAACAATAATA
CTCATGGAAAAGCAATGTGTACAGATATCCTTTTTAAGGATGTAATTCAGCCATCAAGGAACTGCATT
TGTCACATCAGAAATCCTGTAATTCCTCTCTTTGAAAATCACTGCAGCAAAATCAACAGTACAAGATG
TCCAAATATTGCGAAGATCTATTTGGGGATCTCCTGTTGAAAACAAGCACTTGAATCATCCACTTGAAC
CAGGCAGGGCTTTGCCATCCCCAATGACCTCAAAAGAAAAATACTCATAAAAAACAAGCGGCTGAAACC
TGAAGTTGAAAAAACAGCTGGAAGCTTTGAGAAGCATGATGGAAGCTGGAGAATCTGCCTCCCCAGCA



[View online »](#)

AACATCTTAGAGGACGATAATGAAGAGGAGATCGAAAAGTCTGACCAAGAGGAGGAAGCTCACCCGAAT
TCAAATTTGAAAATGAACTTTCTGCTGATGACTTGGGTCAACAAGGAAGCTGTTGCAAATAGCGTCAAGAA
GGGCTGGTCACTGTAGAAGATGAGCAGGCGTGGATGGCATCTTATAAATATGTAGGTGCTACCACTAAT
ATCCATCCATATTTGTCCACAATGATCAACTACGCCAGCCTGTAAAGTTTCAAGTTTCCATGTGGCAG
AAGAACGCAATATTCATTATAACATGTCTTCTTTAATGAATCAGTCGGTCTTGGCTACTGAAGACACA
TGCAATTGAATTTGTCAATTATAACAAACGGCAAATGAGTCGCATTTACCCCAAGGGAGGCCGATCGAT
TCCAGTAATTACATGCCTCAGATTTTCTGGAACGCTGGCTGCCAGATGGTTTCACTGAACATCAAACCC
CAGATTTAGCGATGCAATTGAATCAGGGAAAATTTGAGTATAATGGATCGTGCGGTACCTTCTCAAACC
AGATTTTATGAGGCGCCTGATCGAACATTTGACCCCTTCTCTGAAACTCCTGTTGATGGTGTATTGCA
GCCACTTGCTCAGTGCAGGTTATATCAGGTCAATCTTATCAGATAAGAAAATTGGCACCTACGTAGAGG
TGGATATGTATGGTTGCCACTGACACCATACGTAAGGAATCCGAACTCGCATGGTTATGAATAATGG
ACTCAATCCAGTTTACAATGAAGAGTCATTTGTATTTTCGGAAGGTGATCCTGCCGGACCTGGCTGTCTT
AGAATAGCTGTATGATGATAACAACAAGCTGATTGGCCAGAGGATCCTCCCGTTGATGGCTCCAAG
CCGGATATCGACACATTTCCCTTCGAAATGAGGGAAAATAAACCATTATCACTACCAACAATTTTCTGCAA
TATTGTTCTTAAAACATATGTGCCTGATGGATTTGGAGATATCGTGGATGCTTTATCAGATCCAAAGAAA
TTTCTCTCAATTACAGAAAAGAGAGCAGACCAAATGAGAGCTATGGGCATTGAAACTAGTGACATAGCCG
ACGTGCCCAGTGACACTTCCAAAATGACAAGAAAGGAAAGGCCAACACCGCCAAAGCAAATGTGACCCC
TCAGAGTAGCTCTGAGCTCAGACCAACCACCGCTGCCCTGGCCTCTGGTGTGGAAGCCAAGAAAGGT
ATTGAACTTATCCCTCAAGTAAGGATAGAAGACTTAAAGCAGATGAAGGCTTACTTGAAGCATTTAAGA
AACAGCAGAAGGAGCTAAATCTTTAAAGAAGAAACATGCAAAGGAACACAGTACCATGCAGAAGTTACA
CTGCACGCAAGTTGACAAAATTTGGCAGAGTATGACAAAGAGAAGTCACTCATGAGAAAATCCTAGAG
AAGGCAATGAAGAAGAAGGGGGAAGTAATTTGTCTCGAAATGAAAAAGAAACAGAAATCAAATTCAGA
CGCTGACATCAGATCACAATCTAAGGTCAAAGAGATTGTAGCACAGCACACAAAGGAATGGTCAGAAAT
GATCAATACCCACAGTGTGAGGAGCAAGAAATCCGAGACCTGCACCTCAGCCAGCAGTGTGAGCTGCTG
AAAAAGCTACTCATCAATGCCCAGAGCAGCAAAACCCAGCAGCTGAAACTGTCCCATGACAGGGAAGCA
AGGAAATGCGAGCACACCAGGCTAAGATTTCTATGAAAAATAGCAAAGCCATCAGCCAAGATAAATCTAT
CAAGAATAAAGCAGAACGGGAAAGGCGAGTCAGGGAGTTAAACAGCAGCAACACTAAAAAGTTTCTGGAA
GAAAGAAAGAGACTTGCCATGAAGCAGTCCAAAGAAATGGATCAGTTGAAAAAGTCCAGCTTGAACATC
TAGAATTCCTAGAGAAACAGAATGAGCAGGCGAAGGAGATGCAGCAGATGGTGAATTTGGAAGCCGAGAT
GGACCGCAGACCAGCAACAGTAGTA

ACGCGTACGCGGCCGCTCGAG - GFP Tag - GTTTAA

Protein Sequence: >RG217903 representing NM_182797
 Red=Cloning site Green=Tags(s)

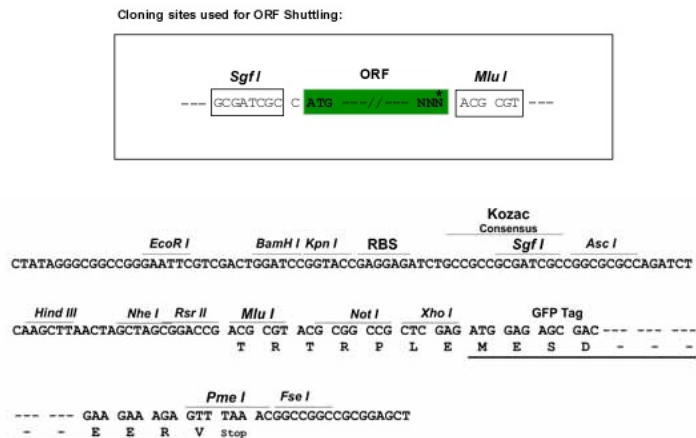
```

MAKPYEFNWQKEVPSFLQEGTVFDRIYEEESVFEPNCLFKVDEFGFFLTWRSEGKEGQVLECSLINSIRS
GAIPKDPKILAALAEAVGKSENDLEGRIVCVCSGTDLVNISFTYMAENPEVTKQWVEGLRSIIHNFRANN
VSPMTCLKKHHMKLAFMTNTNGKIPVRSITRTFASGKTEKIVFQALKELGLPSGKNDEIEPTAFSYEKFY
ELTQKICPRTDIEDLFKKINGDKTDYLVTDQLVSFLNEHQDRPRLNEILFPFYDAKRAMQI IEMYEPDED
LKKKGLISSDGFCRYLMSDENAPVFLDRLELYQEMDHPLAHYFISSSHNTYL TGRQFGGKSSVEMYRQVL
LAGCRCVELDCWDGKGEDQPEIITHGKAMCTDILFKDVIQAIKETAFTVTSEYPVILSFENHCSKYQQYKM
SKYCEDLFGDLLLKQALESHPLEPGRALPSPNDLKRKILIKNKRLKPEVEKKQLEALRSMMEAGESASPA
NILEDNNEEEIESADQEEEAHPEFKFGNELSADDLGHKEAVANSVKKGLVTVEDEQAWMASYKYVGATTN
IHPYLSTMINYAQPVKFQGFHVAEERNIHYNMSSFNE SVGLGYLKTHAIEFVNYNKRQMSRIYPKGGRVD
SSNYMPQIFWNAGCQMVSLNYQTPDLAMQLNQKFEYNGSCGYLLKPDFMRRPDRTPDFSETPVDGVIA
ATCSVQVISGQFLSDKKIGTYVEVDMYGLPTDTIRKEFRTRMVMNGLNPVYNEESVFVRKVILPDLAVL
RIAVYDDNNKLIQIRILPLDGLQAGYRHISLRNEGNKPLSLPTIFCNIVLKTYVPDGFVDALSDPKK
FLSITEKRADQMRAMGIETSDIADVPSDTSKNDKKGKANTAKANVTPQSSSELRPPTTAALASGVEAKKG
IELIPQVRIEDLKQMKAYLKHKKQKELNSLKKKHAKHSTMQKLHCTQVDKIVAQYDKEKSTHEKILE
KAMKKKGGSNCLEMKKETEIKIQTLTSDHKS VKIEIVAQHTKEWSEMINTHSAEEQEI RDLHLSQQCELL
KKLLINAHEQQTQLKLSHDRESKEMRAHQAKISMENSKAISQDKSIKKAERERRVRELNSSNTKKFLE
ERKRLAMKQSKEMDQLKKVQLEHLEFLEKQNEQAKEMQMVKLEAEMDRRPATVV
  
```

TRTRPLE - GFP Tag - V

Restriction Sites: SgfI-MluI

Cloning Scheme:

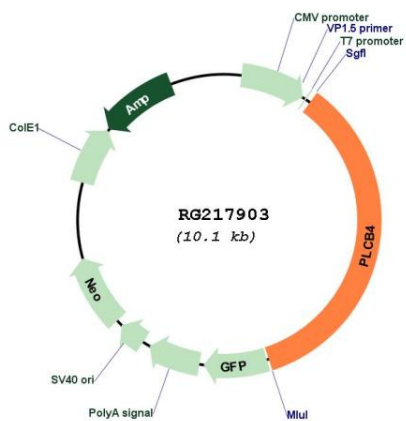


ACCN: NM_182797

ORF Size: 3525 bp

OTI Disclaimer:	The molecular sequence of this clone aligns with the gene accession number as a point of reference only. However, individual transcript sequences of the same gene can differ through naturally occurring variations (e.g. polymorphisms), each with its own valid existence. This clone is substantially in agreement with the reference, but a complete review of all prevailing variants is recommended prior to use. More info
OTI Annotation:	This clone was engineered to express the complete ORF with an expression tag. Expression varies depending on the nature of the gene.
Components:	The ORF clone is ion-exchange column purified and shipped in a 2D barcoded Matrix tube containing 10ug of transfection-ready, dried plasmid DNA (reconstitute with 100 ul of water).
Reconstitution Method:	<ol style="list-style-type: none"> 1. Centrifuge at 5,000xg for 5min. 2. Carefully open the tube and add 100ul of sterile water to dissolve the DNA. 3. Close the tube and incubate for 10 minutes at room temperature. 4. Briefly vortex the tube and then do a quick spin (less than 5000xg) to concentrate the liquid at the bottom. 5. Store the suspended plasmid at -20°C. The DNA is stable for at least one year from date of shipping when stored at -20°C.
RefSeq:	NM_182797.1 , NP_877949.1
RefSeq Size:	5509 bp
RefSeq ORF:	3528 bp
Locus ID:	5332
UniProt ID:	Q15147
Cytogenetics:	20p12.3-p12.2
Protein Families:	Druggable Genome
Protein Pathways:	Alzheimer's disease, Calcium signaling pathway, Chemokine signaling pathway, Gap junction, GnRH signaling pathway, Huntington's disease, Inositol phosphate metabolism, Long-term depression, Long-term potentiation, Melanogenesis, Metabolic pathways, Phosphatidylinositol signaling system, Vascular smooth muscle contraction, Wnt signaling pathway
Gene Summary:	The protein encoded by this gene catalyzes the formation of inositol 1,4,5-trisphosphate and diacylglycerol from phosphatidylinositol 4,5-bisphosphate. This reaction uses calcium as a cofactor and plays an important role in the intracellular transduction of many extracellular signals in the retina. Multiple transcript variants encoding different isoforms have been found for this gene. [provided by RefSeq, Feb 2010]

Product images:



Circular map for RG217903