

Product datasheet for **RG217897**

NEDD4 2 (NEDD4L) (NM_015277) Human Tagged ORF Clone

Product data:

Product Type:	Expression Plasmids
Product Name:	NEDD4 2 (NEDD4L) (NM_015277) Human Tagged ORF Clone
Tag:	TurboGFP
Symbol:	NEDD4L
Synonyms:	hNEDD4-2; NEDD4-2; NEDD4.2; PVNH7; RSP5
Mammalian Cell Selection:	Neomycin
Vector:	pCMV6-AC-GFP (PS100010)
E. coli Selection:	Ampicillin (100 ug/mL)



[View online »](#)

ORF Nucleotide Sequence:

>RG217897 representing NM_015277
 Red=Cloning site Blue=ORF Green=Tags(s)

TTTTGTAATACGACTCACTATAGGGCGGCCGGGAATTCGTCGACTGGATCCGGTACCGAGGAGATCTGCC
 GCC**CGCATCGCC**

ATGGCGACCGGGCTCGGGAGCCGGTCTATGGACTTTCGAAGACGAGGGAGAGTCCCGTATTCTCAGAG
 TAAAAGTTGTTTCTGGAATTGATCTCGCCAAAAAGGACATCTTTGGAGCCAGTGATCCGTATGTGAAACT
 TTCATTGTACGTAGCGGATGAGAATAGAGAACTTGCTTTGGTCCAGACAAAAACAATTAAGGACACTG
 AACCCAAAATGGAATGAAGAATTTTATTTAGGGTAAACCCATCTAATCACAGACTCCTATTTGAAGTAT
 TTGACGAAAATAGACTGACACGAGACGACTTCTGGGCCAGGTGGACGTGCCCTTAGTCACCTCCGAC
 AGAAGATCCAACCATGGAGCGACCCTATACATTTAAGGACTTCTCCTCAGACCAAGAAGTCATAAGTCT
 CGAGTTAAGGGATTTTTCGATTGAAAAAGCCTATATGCCAAAAATGGAGGTCAAGATGAAGAAAAACA
 GTGACCAGAGGGATGACATGGAGCATGGATGGGAAGTTGTTGACTCAAATGACTCGGCTTCTCAGCACCA
 AGAGGAACCTCCTCCTCCTCTGCTCCCGGTGGGAAGAAAAAGTGGACAATTTAGGCCGAACCTTAC
 TATGTCAACCACAACAACCGGACCCTCAGTGGCACAGACCAAGCCTGATGGACGTGTCCCTCGGAGTCGG
 ACAATAACATCAGACAGATCAACCAGGAGGCAGCACACCGGCGCTTCCGCTCCCGCAGGCACATCAGCGA
 AGACTTGGAGCCCGAGCCCTCGGAGGGCGGGATGTCCCGAGCCTTGGGAGACCATTTAGAGGAAGTG
 AATATCGCTGGAGACTCTCTCGGTCTGGCTCTGCCCCACCACCGGCTCCCGAGGATCTCGGACCAGCC
 CTCAGGAGCTGTGAGGAACTAAGCAGAAGGCTTCAAGTCACTCCAGACTCCAATGGGGAACAGTTCAG
 CTCTTTGATTCAAAGAGAACCCTCCTCAAGTTGAGGTGCAGTGTACCCGACGCAGTGCAGAACAG
 GGCCACTACCACCGCCATCAGTGGCCTATGTACATAACCACCGCGGTCTGCCTCAGGCTGGGAAGAAA
 GAAAAGATGCTAAGGGGCGCACATACTATGTCAATCATAACAATCGAACCAACTTGGACTCGACCTAT
 CATGCAGCTTGCAGAAGATGGTGCCTCCGGATCAGCCACAACAGTAACAACCATCTAATCGAGCCTCAG
 ATCCGCGGCTCGTAGCCTCAGCTCGCCAACAGTAACCTTATCTGCCCGCTGGAGGTGCCAAGGACT
 CACCCGTACGTCGGGCTGTGAAAGACACCCTTCCAACCCACAGTCCCCACAGCCATCACCTTACAACCTC
 CCCCAAACCACAACAAGTACACAGAGCTTCTGCCACCGGCTGGGAAATGAGGATAGCGCCAAAC
 GGCCGGCCCTTCTTATTGATCATAACACAAGACTACAACCTGGGAAGATCCACGTTTGAATTTCCAG
 TACATATGCGGTCAAAGACATCTTTAAACCCCAATGACCTTGGCCCTTCTCCTGGCTGGGAAGAAAG
 AATTCACTTGGATGGCCGAACGTTTTATATTGATCATAATAGCAAATTTACTCAGTGGGAAGACCCAAGA
 CTGCAGAACCCAGCTATTACTGGTCCGGCTGTCCCTTACTCCAGAGAATTTAAGCAGAAATATGACTACT
 TCAGGAAGAAATTAAGAAACCTGCTGATATCCCAATAGGTTTGAATGAACTTCACAGAAATACAT
 ATTTGAAGAGTCTATCGGAGAATTATGTCCTGAAAAGACCAGATGTCTAAAAGCTAGACTGTGGATT
 GAGTTTGAATCAGAGAAAGGCTTGGACTATGGGGGTGTGGCCAGAGAATGGTTCTTCTTACTGTCCAAAG
 AGATGTTCAACCCCTACTACGGCCTTTTGGTACTCTGCCACGGACAACCTACACCCCTCAGATCAACCC
 TAATTCAGGCCTCTGTAATGAGGATCATTTGCTCTACTTCACTTTTATTGGAAGAGTTGCTGGTCTGGCC
 GTATTTTATGGGAAGCTCTTAGATGGTTTCTTATTAGACCATTTTACAAGATGATGTTGGGAAAGCAGA
 TAACCCGTAATGACATGGAATCTGTGGATAGTGAATTTACAACCTTTTGAATGGATCCTGGAGAATGA
 CCCTACTGAGCTGGACCTCATGTTCTGCATAGACGAAGAAAACCTTGGACAGACATCAAGTGGATTG
 AAGCCCAATGGGTGAGAAATAATGGTCACAAATGAAAACAAAAGGGAATATATCGACTTAGTCATCCAGT
 GGAGATTTGTGAACAGGGTCCAGAAGCAGATGAACGCCTTCTTGGAGGGATTCACAGAACTACTTCTAT
 TGATTTGATTAATAATTTTACGAAAATGAGCTGGAGTTGCTCATGTGCGGCTCGGTGATGTGGATGTG
 AATGACTGGAGACAGCATTCTATTTACAAGAACGGCTACTGCCAAACCACCCCGTCACTCAGTGGTTCT
 GGAAGGCTGTGCTACTCATGGACCCGAAAAGCGTATCCGGTACTGCAGTTTGTACAGGGACATCGCG
 AGTACCTATGAATGGATTTGCCGAACCTTATGGTTCCAATGGTCTCAGCTGTTTACAATAGAGCAATGG
 GGCAGTCTGAGAACTGCCAGAGCTCACACATGCTTTAATCGCCTTGACTTACCTCCATATGAAACCT
 TTGAAGATTTACGAGAGAACTTCTCATGGCCGTGGAAAATGCTCAAGGATTTGAAGGGGTGGAT

ACGCGTACGCGGCCGCTCGAG - GFP Tag - GTTTAA

Protein Sequence: >RG217897 representing NM_015277
 Red=Cloning site Green=Tags(s)

MATGLGEPVYGLSEDEGESRILRVKVVSGIDLAKKIDIFGASDPYVKLSLYVADENRELALVQTKTIKKT
 LNPKWNEEFYFRVNPNSHRLLFEVFDENRLTRDDFLGQVDVPLSHLPTEDPTMERPYTFKDFLLRPRSHK
 RVKGFRLRLKMAYPKNGGQDEENSQDRDDMEHGWEVVDSDNSASQHQEELPPPPLPPGWEEKVDNLGR
 TYVYVNHNNRTTQWHRPPLMDVSSSESDNNIRQINQEAHRRFRSRRHISEDLEPEPESEGGDVPEPWET
 ISEEVNIAGDSLGLALPPPASPGRSRTSPQELSEELSRRLQITPDSNGEQFSSLIQREPSRLRSCSVTDA
 VAEQGHLPSPSVAYVHTTTPGLPSGWEERKDAKGRTYVYVNHNNRTTTWTRPIMQLAEDGASGSATNS
 NNHLIEPQIRRPRSLSSPTVTLAPLEGAKDSPVRRRAVKDTLSNPQSPQSPYNSPKPQHKVTQSFLPP
 GWEMRIAPNGRPFFIDHNTKTTTWEDPRLKFPVHMRSKTSLNPNDLGPLPPGWEERIHLDGRTFYID
 HNSKITQWEDPRLQNPAITGPAVPYSREFKQKYDYFRKKLKKPADIPNRFEMKLHRNNIFEESYRRIM
 SVKRPDVLKARLWIEFESEKGLDYGGVAREWFFLLSKEMFNYYGLFEYSATDNYTLQINPNSGLCNE
 DHLSYFTFGRVAGLAVFHGKLLDGGFIRPFYKMLGKQITLNDMESVDSEYYNSLKWILENDPTELDL
 MFCIDEENFGQTYQVDLKPNGSEIMVTNENKREYIDLVIQWRFVNRVQKQMNFALEGFTTELLPIDL
 IKIFDENELELLMCGLGDVDVNDWRQHSIYKNGYCPNHPVIQWFKAVLLMDA EKRI RL LQFVTGT SRV
 PMNGFAELYGSNGPQLFTIEQVGSPEKLPRAHTCFNRDLPPYETFEDLREKLLMAVENAQGFEGVD

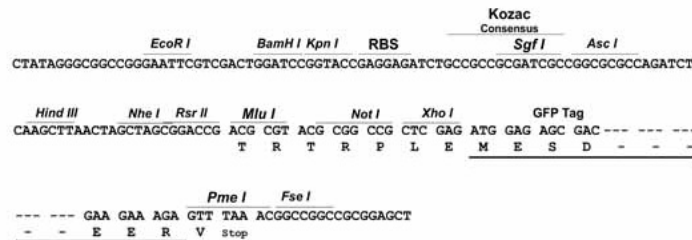
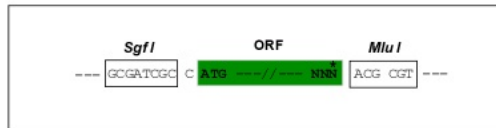
TRTRPLE - GFP Tag - V

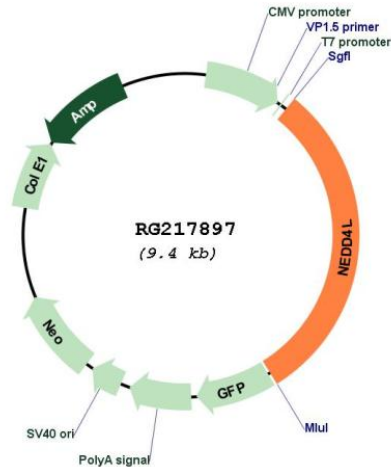
Restriction Sites:

SgfI-MluI

Cloning Scheme:

Cloning sites used for ORF Shuttling:



Plasmid Map:


ACCN: NM_015277

ORF Size: 2865 bp

OTI Disclaimer: The molecular sequence of this clone aligns with the gene accession number as a point of reference only. However, individual transcript sequences of the same gene can differ through naturally occurring variations (e.g. polymorphisms), each with its own valid existence. This clone is substantially in agreement with the reference, but a complete review of all prevailing variants is recommended prior to use. [More info](#)

OTI Annotation: This clone was engineered to express the complete ORF with an expression tag. Expression varies depending on the nature of the gene.

Components: The ORF clone is ion-exchange column purified and shipped in a 2D barcoded Matrix tube containing 10ug of transfection-ready, dried plasmid DNA (reconstitute with 100 ul of water).

Reconstitution Method:

1. Centrifuge at 5,000xg for 5min.
2. Carefully open the tube and add 100ul of sterile water to dissolve the DNA.
3. Close the tube and incubate for 10 minutes at room temperature.
4. Briefly vortex the tube and then do a quick spin (less than 5000xg) to concentrate the liquid at the bottom.
5. Store the suspended plasmid at -20°C. The DNA is stable for at least one year from date of shipping when stored at -20°C.

RefSeq: [NM_015277.3](#)

RefSeq Size: 4871 bp

RefSeq ORF: 2868 bp

Locus ID: 23327

UniProt ID: [Q96PU5](#)

Cytogenetics: 18q21.31

Domains:	C2, HECT, WW
Protein Families:	Druggable Genome
Protein Pathways:	Endocytosis, Ubiquitin mediated proteolysis
Gene Summary:	<p>This gene encodes a member of the Nedd4 family of HECT domain E3 ubiquitin ligases. HECT domain E3 ubiquitin ligases transfer ubiquitin from E2 ubiquitin-conjugating enzymes to protein substrates, thus targeting specific proteins for lysosomal degradation. The encoded protein mediates the ubiquitination of multiple target substrates and plays a critical role in epithelial sodium transport by regulating the cell surface expression of the epithelial sodium channel, ENaC. Single nucleotide polymorphisms in this gene may be associated with essential hypertension. Alternatively spliced transcript variants encoding multiple isoforms have been observed for this gene. [provided by RefSeq, Mar 2012]</p>