

Product datasheet for **RG217888**

FOXD4L2 (NM_001099279) Human Tagged ORF Clone

Product data:

Product Type:	Expression Plasmids
Product Name:	FOXD4L2 (NM_001099279) Human Tagged ORF Clone
Tag:	TurboGFP
Symbol:	FOXD4L2
Synonyms:	forkhead box D4-like 2
Mammalian Cell Selection:	Neomycin
Vector:	pCMV6-AC-GFP (PS100010)
E. coli Selection:	Ampicillin (100 ug/mL)
ORF Nucleotide Sequence:	>RG217888 representing NM_001099279 Red=Cloning site Blue=ORF Green=Tags(s)

TTTTGTAATACGACTCACTATAGGGCGGCCGGAATTCGTCGACTGGATCCGGTACCGAGGAGATCTGCC
GCC**CGATCGCC**

ATGAACCTGCCAAGAGCTGAGCGCCCTCGCTCCACACCGCAGCGCAGCCTCCGGGACTCCGATGGGGAAG
ACGGTAAAATCGATGTCTGGGAGAGGAGGAAGATGAAGACGAGGTGGAAGACGAGGAGGAGGAGGCGAG
ACAGCAGTTCTAGAGCAGTCGCTCCAGCCGGGCTGCAGGTGGCCCGTGGGGCGGGTTCGCTTCCC
CGAGAGCACATCGAGGGCGCGCGGCCGAGTGACCTTCAGAGTTTGGCACCAAGTTCAGGGCACCGC
CAAGGTCTGCGGGCCCTCTGAAGATGCCCGCAGCCGCAAGCCCCCTACTCGTACATCGCGCTCAT
CACCATGGCCATCCTGCAAAACCCGCACAAGCGCCTCACGCTCAGCGCATCTGCGCCTTATTAGTGGC
CGTTCACATACTACCGCCGAAGTTCCCCGCCTGGCAGAACAGCATCCGCCACAACCTCTCGTGAACG
ACTGCTTCGTTAAGATCCCCCGAGCCGGGCCACCCAGGCAAGGGCAACTACTGGAGCCTGGACCCCGC
CTCCCAGGACATGTTGACAATGGCAGCTTCTCCGGCGTAGGAAGCGTTTCAAGCGCCACCAACTGACC
CCGGGAGCCACCTGCCCAACCCCTTCCCTCTACCTGTGCACACGCCGCCCTGCACAACCCCAACCCAG
GCCCTCTGCTTGGGGCCCTGCCCGCCGAGCCAGTCCCGGGGCTACCCCAACACCGCCCGGGGAG
ACGCCCTTACGCTCTGCTGCACCCGATCCTCTCGCTACCTACTGCTCTCGGCCGCTATGCCGGG
GCACCGAAGAAAGCAGAAGGCGCGGACCTGGCGACCCCGCACCTTCCCGTGTGCAGCCCTCACTTGG
TCCTCAGCCTTGGGAGGAGGGCAAGGGTCTGGCGTCGCCACCGGAGGCGGATGCTTCTTTAGCATT
GAGAGTATTATGCAAGGGGTGAGGGGAGCGGTACAGGGGCTGCCGAGAGTTTGTCCCGACCGGTGGA
GCTACTGCCACCTGCTCCAGCGACCATCAAGCCTGTTGCATCCCCAAACCGCTGCCCTTTGCTGCAAGT
GTCCGCCCGCTGCTGCTCGGACAATTTGCAGCAATAGCAGCAGCATCAGGAGGACTGCCCAACGGC
TGGCTCCACCAAGGGCGCGGTGCTGGCGGGCACCTGTCCGCTCGTCCGGCTGC

ACGGTACGGGCCGCTCGAG - GFP Tag - GTTTAA



[View online »](#)

Protein Sequence: >RG217888 representing NM_001099279
 Red=Cloning site Green=Tags(s)

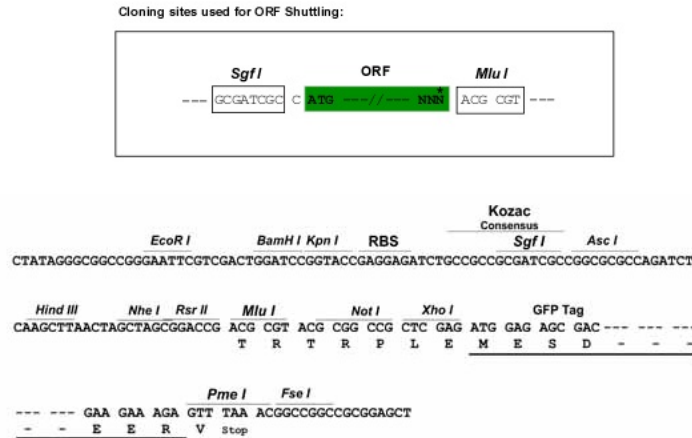
MNLPR AERPRSTPQRSLRDSGEGDKIDVLGEEDEDEVEDEEEEARQQFLEQSLQPLQVARWGGVALP
 REHIEGGGSPDPSEFGTKFRAPPRSAASEDARQPAKPPYSYIALITMAILQNPBKRLTLSGICAFISG
 RFPYYRRKFPWQNSIRHNLSLNDCFVKIPREPGHPGKGNYSWLDPASQDMFDNGSFLRRRKRFRKRLT
 PGAHLPHFPFLPAHAALHNHPGPGLLGAPAPPQVPGAYPNTAPGRRPYALLHPHPLRYLLL SARVYAG
 APKKAEGADLATPAPFCCSPHLVLSLGRRARVWRRHREADASLSALRVLCCKGSGERVQGLRRVCPRRRG
 ATATCSSDHQACCIPKPLPLCCKCPPLLLLGQFCSSSSIRRTAAPTAAALPPRARCWAGTCRPRRC

TRTRPLE - GFP Tag - V

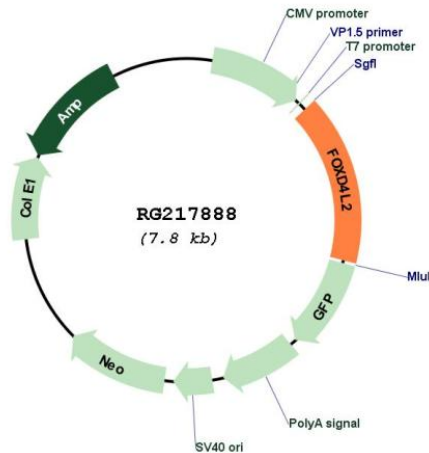
Restriction Sites:

SgfI-MluI

Cloning Scheme:



Plasmid Map:



ACCN:

NM_001099279

ORF Size:	1248 bp
OTI Disclaimer:	The molecular sequence of this clone aligns with the gene accession number as a point of reference only. However, individual transcript sequences of the same gene can differ through naturally occurring variations (e.g. polymorphisms), each with its own valid existence. This clone is substantially in agreement with the reference, but a complete review of all prevailing variants is recommended prior to use. More info
OTI Annotation:	This clone was engineered to express the complete ORF with an expression tag. Expression varies depending on the nature of the gene.
Components:	The ORF clone is ion-exchange column purified and shipped in a 2D barcoded Matrix tube containing 10ug of transfection-ready, dried plasmid DNA (reconstitute with 100 ul of water).
Reconstitution Method:	<ol style="list-style-type: none">1. Centrifuge at 5,000xg for 5min.2. Carefully open the tube and add 100ul of sterile water to dissolve the DNA.3. Close the tube and incubate for 10 minutes at room temperature.4. Briefly vortex the tube and then do a quick spin (less than 5000xg) to concentrate the liquid at the bottom.5. Store the suspended plasmid at -20°C. The DNA is stable for at least one year from date of shipping when stored at -20°C.
RefSeq:	NM_001099279.1 , NP_001092749.1
RefSeq Size:	3109 bp
RefSeq ORF:	1250 bp
Locus ID:	100036519
Cytogenetics:	9p12