

Product datasheet for **RG217884**

UBE2I (NM_003345) Human Tagged ORF Clone

Product data:

Product Type: Expression Plasmids
Product Name: UBE2I (NM_003345) Human Tagged ORF Clone
Tag: TurboGFP
Symbol: UBE2I
Synonyms: C358B7.1; P18; UBC9
Mammalian Cell Selection: Neomycin
Vector: pCMV6-AC-GFP (PS100010)
E. coli Selection: Ampicillin (100 ug/mL)
ORF Nucleotide Sequence: >RG217884 representing NM_003345
 Red=Cloning site Blue=ORF Green=Tags(s)

TTTTGTAATACGACTCACTATAGGGCGGCCGGAATTCGTCGACTGGATCCGGTACCGAGGAGATCTGCC
 GCC**CGATCGCC**

ATGTCGGGGATCGCCCTCAGCAGACTCGCCAGGAGAGAAAGCATGGAGGAAAGACCACCCATTTGGTT
 TCGTGGCTGTCCCAACAAAAATCCCGATGGCAGCATGAACCTCATGAACGGGAGTGGCCATTCCAGG
 AAAGAAAGGGACTCCGTGGGAAGGAGGCTTGTAACTACGGATGCTTTCAAAGATGATTATCCATCT
 TCGCCACCAAAATGTAATTGCAACCACCATTATTCACCCGAATGTGTACCCTTCGGGGACAGTGTGCC
 TGTCATCTTAGAGGAGACAAGGACTGGAGGCCAGCCATCAATCAAACAGATCCTATTAGGAATACA
 GGAACCTCTAAATGAACCAATATCCAAGCCAGCTCAAGCAGAGGCCTACACGATTTACTGCCAAAAC
 AGAGTGGAGTACGAGAAAAGGTCGAGCACAAGCCAAGAAGTTTGCGCCCTCA

ACGCGTACGCGGCCGCTCGAG - GFP Tag - GTTTAA

Protein Sequence: >RG217884 representing NM_003345
 Red=Cloning site Green=Tags(s)

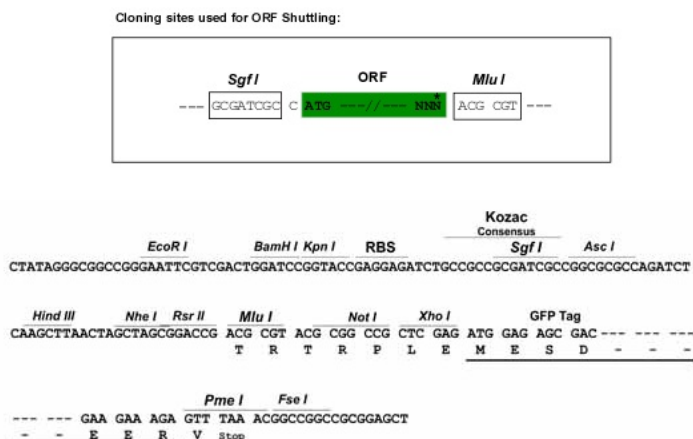
MSGIALSRLAQRKAWRKDHPFGFVAVPTKNPDGTMNLMNWECAIPGKKGTPWEGGLFKLRMLFKDDYPS
 SPPKCKFEPPLFHPNVYPSGTVCLSIIEEDKDWRAITIKQILLGIQELLNEPNIQDPAQAEAYTIYQCN
 RVEYEKRVRAQAKKFAPS

TRTRPLE - GFP Tag - V

Restriction Sites: SgfI-MluI



[View online »](#)

Cloning Scheme:


ACCN: NM_003345

ORF Size: 474 bp

OTI Disclaimer: The molecular sequence of this clone aligns with the gene accession number as a point of reference only. However, individual transcript sequences of the same gene can differ through naturally occurring variations (e.g. polymorphisms), each with its own valid existence. This clone is substantially in agreement with the reference, but a complete review of all prevailing variants is recommended prior to use. [More info](#)

OTI Annotation: This clone was engineered to express the complete ORF with an expression tag. Expression varies depending on the nature of the gene.

Components: The ORF clone is ion-exchange column purified and shipped in a 2D barcoded Matrix tube containing 10ug of transfection-ready, dried plasmid DNA (reconstitute with 100 ul of water).

Reconstitution Method:

1. Centrifuge at 5,000xg for 5min.
2. Carefully open the tube and add 100ul of sterile water to dissolve the DNA.
3. Close the tube and incubate for 10 minutes at room temperature.
4. Briefly vortex the tube and then do a quick spin (less than 5000xg) to concentrate the liquid at the bottom.
5. Store the suspended plasmid at -20°C. The DNA is stable for at least one year from date of shipping when stored at -20°C.

RefSeq: [NM_003345.5](#)

RefSeq Size: 1221 bp

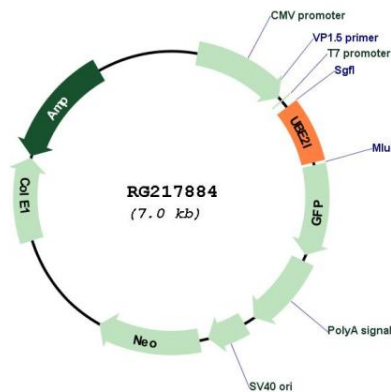
RefSeq ORF: 477 bp

Locus ID: 7329

UniProt ID: [P63279](#)

Cytogenetics:	16p13.3
Domains:	UBCc
Protein Pathways:	Ubiquitin mediated proteolysis
Gene Summary:	The modification of proteins with ubiquitin is an important cellular mechanism for targeting abnormal or short-lived proteins for degradation. Ubiquitination involves at least three classes of enzymes: ubiquitin-activating enzymes, or E1s, ubiquitin-conjugating enzymes, or E2s, and ubiquitin-protein ligases, or E3s. This gene encodes a member of the E2 ubiquitin-conjugating enzyme family. Four alternatively spliced transcript variants encoding the same protein have been found for this gene. [provided by RefSeq, Jul 2008]

Product images:



Circular map for RG217884