

Product datasheet for **RG217883**

MEGF10 (NM_032446) Human Tagged ORF Clone

Product data:

Product Type:	Expression Plasmids
Product Name:	MEGF10 (NM_032446) Human Tagged ORF Clone
Tag:	TurboGFP
Symbol:	MEGF10
Synonyms:	EMARDD; SR-F3
Mammalian Cell Selection:	Neomycin
Vector:	pCMV6-AC-GFP (PS100010)
E. coli Selection:	Ampicillin (100 ug/mL)
ORF Nucleotide Sequence:	>RG217883 representing NM_032446 Red=Cloning site Blue=ORF Green=Tags(s)

TTTTGTAATACGACTCACTATAGGGCGGCCGGAATTCGTCGACTGGATCCGGTACCGAGGAGATCTGCC
GCC**CGATCGCC**

ATGGTTATTTCTTTGAAGACTCATGCCTGAGCTTTATTTGTTTATTGTTATGCCACTGGATTGGGACAGCAT
CACCTCTGAATCTTGAAGACCCTAATGTGTGTAGCCACTGGGAAAGCTACTCAGTGACTGTGCAAGAGTC
ATACCCACATCCCTTTGATCAAATTTACTACAGAGCTGACTGACATTCTAACTGGTTTAAATGCACG
CGGCACAGAGTCAGCTATCGGACAGCCTATCGACATGGGAGAAGACTATGTATAGCGCAAGTCTCAGT
GTTGTCCTGGATTTTATGAAAGCGGGAAATGTGTGTCCCCACTGTGCTGATAAATGTGTCATGGTGC
CTGATTGCTCCAAACACCTGTCAGTGTGAGCCTGGCTGGGAGGGACCAACTGCTCCAGTGCCTGCGAT
GGTGATCACTGGGGTCCCCACTGCACCAGCCGGTGCCAGTGCAAAAATGGGGCTCTGTGCAACCCCATCA
CCGGGGCTTGCCACTGTGCTGCGGGCTCCGGGGCTGGCGCTGCGAGGACCGCTGTGAGCAGGGCACCTA
TGGTAACGACTGTCATCAGAGATGCCAGTGCCAGAATGGAGCCACCTGCGACCACGTACCGGGGAATGC
CGCTGCCACCAGGATACACCGGAGCCTTCTGTGAGGATCTTGTCTCCTGGTAAACATGGTCCACAGT
GTGAGCAGAGATGCCCTTGTCAAATGGAGGAGTGTGTATCACGTCCTGGAGAATGCTCTTGCCTTC
TGGCTGGATGGGCACAGTGTGTGGTCAGCCTTGCCCGAGGGTCTGTTGGAAAGAACTGTTCCCAAGAA
TGCCAGTGCCATAATGGAGGGACGTGTGATGCTGCCACAGGCCAATGTCATTGCAGTCCAGGATACACAG
GGGAACGGTGCCAGGATGAGTGTCTGTTGGGACCTATGGCGTTCTCTGTGCTGAGACCTGCCAGTGTGT
CAACGGAGGGAAGTGTACCACGTGAGCGGCGCATGCCTCTGTGAAGCAGGCTTTGCTGGCGAGCGCTGC
GAAGCACGCTGTGCTGAGGGGCTCTACGGCATCAAATGTGACAAACGGTGTCCCTGCCACTTGGA
ACACTCATAGCTGTACCCCATGTCTGGAGAGTGTGCCTGCAAGCCGGGCTGGTCAGGACTCTACTGTAA
TGAGACATGTTCTCCTGGATTCTACGGGAAGCTTGCACAGATCTGCAGCTGCCAAAATGGGGCAGAC
TGTGACAGTGTGACTGAAAAGTGCACCTGTGCCAGGATTCAAAGGAATTGACTGCTCTACCCATGCC
CTCTGGGAACCTATGGGATAAACTGTTCTCTCGCTGTGGCTGTAAAAATGATGCAGTCTGCTCTCCTGT
GGACGGGCTTTGACTTGAAGCAGGCTGGCACGGGGTGGACTGCTCCATCAGATGTCCAGTGGCACA



TGGGGCTTTGGCTGTAACCTAACATGCCAGTGCCTCAACGGGGGAGCCTGCAACACCCTGGACGGGACCT
 GCACGTGTGCACCTGGATGGCGCGGGGAGAAATGCGAACTTCCTGCCAGGATGGCACGTACGGGCTGAA
 CTGTGCTGAGCGCTGCGACTGCAGCCACGCAGATGGCTGCCACCCTACCACGGGCCATTGCCCTGCCTC
 CCCGGATGGTCAGGTGCCACTGTGACAGCGTGTGTGCTGAGGGACGCTGGGGCCCCAACCTGCTCCCTGC
 CCTGCTACTGTAAAAATGGGGCTTATGCTCCCCTGATGATGGCATCTGCGAGTGTGCACCAGGCTTCCG
 AGGCACCCTTGTGAGAGGATCTGCTCCCCTGGTTTTTATGGGCATCGCTGCAGCCAGACATGCCACAG
 TGGCTTACAGCAGCGGGCCCTGCCACCACATCACCGCCCTGTGTGACTGCTTGCCTGGCTTACACAGCG
 CCCTTGCATGAAGTGTGCCAGTGGCAGATTTGGGAAAAACTGTGCAGGAATTTGTACCTGCACCAA
 CAACGGAACTGTAAACCCATTGACAGATCTTGTGAGTGTACCCCGTTGGATTGGCAGTGACTGCTCT
 CAACCATGTCCACCTGCCACTGGGGCCCCAAACTGCATCCACACGTGCAACTGCCATAATGGAGCTTTCT
 GCAGCGCTACGATGGGGAATGTAAATGCACTCCTGGCTGGACAGGGCTCTACTGCACTCAGAGATGTCC
 TCTAGGGTTTTATGAAAAAGATTGTGCACTGATATGCCAATGTCAAACGGAGCTGACTGCGACCACATT
 TCTGGGCAGTGTACTTGCCGCACTGGATTATGGGACGGCACTGTGAGCAGAAGTGCCTTCAGGAACAT
 ATGGCTATGGCTGTGCCAGATATGTATTGTCTGAACAACCTCCACTGCGACCACATCACTGGGACCTG
 TACTGCAGCCCCGGATGGAAGGGAGCGAGATGTGATCAAGCTGGTGTATCATAGTTGAAATCTGAAC
 AGCTTAAGCCGAACCACTACTGCTCTCCCTGCTGATTCCCTACCAGATCGGGGCCATTGCAGGCATCATCA
 TTCTTGTCTAGTTGTTCTTCTTCTACTGGCATTGTTCTATTATTTATAGACACAAGCAGAAGGAAAGGA
 ATCAAGCATGCCAGCAGTTACCTACACCCTGCTATGAGGGTCGTCAATGCAGATTATACCATTTACGGA
 ACCCTTCTCACAGCAATGGTGGAAACGCTAATAGCCACTACTTCACCAATCCCAGTTACCACACGCTCA
 CCCAGTGTGCCACATCCCCTCACGTCAACAACAGGGACAGGATGACTGTCACGAAGTCAAAAAACAATCA
 ACTGTTTGTGAATCTTAAAAATGTGAACCTGGGAAGAGAGGCCCTGTGGGGACTGCACTGGGACATTG
 CCGGCTGACTGGAACATGGCGGCTACCTCAACGAGCTCGGTGCTTTTGGACTTGACAGAAGCTATATGG
 GAAAACTTAAAAAGACTGGGAAAGAAATCTGAATATAAATCAAGTAAGTCTCCCTCAAGCAGTCTGA
 GAACCCATATGCCACTATTAAGACCCACTGTACTTATCCCGAAAAGCTCAGAGTGTGGTTATGTGGAG
 ATGAAATCGCCGGCACGAAGAGATTCCCATATGCAGAGATCAATAACTCAACTCAGCCAACAGGAATG
 TCTATGAAGTTGAACCTACAGTGTGTTGTCCAAGGAGTATTCAGCAATAATGGGCGTCTCTCCAGGA
 TCCATATGACCTCCCAAAGAACAGTCACATCCCTTGTCTATGACCTGCTGCCAGTCCGAGACAGTTCA
 TCCTCCCCTAAGCAAGAGGACAGTGGAGGTAGCAGCAGCAACAGCAGCAGCAGCAGTGA

ACGCGTACGCGGCCGCTCGAG - GFP Tag - GTTTAA

Protein Sequence:

>RG217883 representing NM_032446
 Red=Cloning site Green=Tags(s)

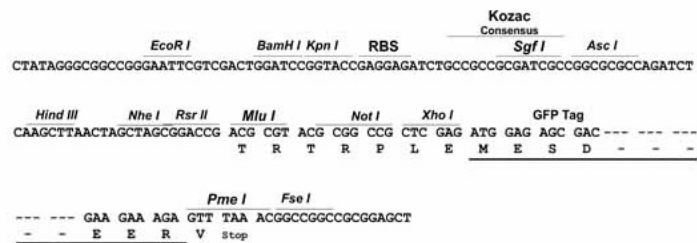
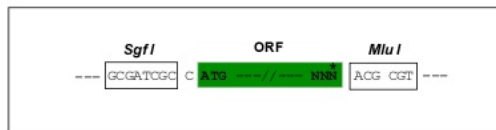
MVISLNSCLSFICLLLCHWIGTASPLNLEDPNVCSHWESYSVTVQESYPHPFDQIYYTSCTDILNWFKCT
 RHRVSYRTAYRHGEKTMYYRKSQCPCGFYESGEMCVPHCADKCVHGRCIAPNTCQCEPWGGTNCSSACD
 GDHWGPHCTSRCQCKNGALCNPIITGACHCAAGFRGWRCEDRCEQGTGNDCHQRCQCNQNGATCDHVTGEC
 RCPPGYTGAFCEDLPPGKHGPPQCEQRCPCQNGGVCHHVTGECSCPSGWMGTVCQPCPEGRFGKNCQS
 CQCHNGGTCDAAATGQCHCSPGYTGERCQDECPVGTGVLCAETCQCQVNGGKCYHVSAGLCEAGFAGERC
 EARLCPPEGLYGIKCDKRCPCHELENTHSCHPMSGECACKPGWSGLYCNETCSPGFYGEACQICSCQNGAD
 CDSVTGKCTCAPGFKIDCSTPCPLGTGYNCSRRGCKNDAVCSVPVDSCTCKAGWHGVDCSIRCPST
 WGFGCNLTCQCLNGGACNTLDGTCTCAPGWRGEKCELPQDGTGLNCAERCDCSHADGCHPTTGHCRCL
 PGWSGVHCDVCAEGRWGPNCSLPCYCKNGASCSPDDGICECAPGFRGTTQCRICSPGFYGHRCSTCPQ
 CVHSSGPCHHITGLCDLPGFTGALCNEVCPSGRFGKNCAGICTCTNNGTCNPIDRSCQCYPGWIGSDCS
 QPCPPAHWGPNCIHTCNCHNGAFCSAYDGECKTPGWTGLYCTQRCPLGFYKDCALICQCNQNGADCDHI
 SGQCTCRTGFMGRHCEQKCPSTYGYGCRQICDCLNNSCDHITGTGTCYCSPGWKGARCDQAGVIIVGNLN
 SLSRTSTALPADSYQIGAIAGIILVVLVLLALFIIYRHKQKQKESMPAVTYTPAMRVVNDADYISG
 TLPHSNNGNANSHYFTNPSYHTLTQCATSPHVNNRDRMTVTKSKNNQLFVNLKNVNPGRKRPVGDCTGTL
 PADWKHGGYLNELGAFGLDRSYMGLSLKDLGKNSEYNSSNCSLSSENPHYATIKDPPVLIPKSSECGYVE
 MKSPARRDSPYAEINNSTSANRNVEVEPTVSVVQGVFVSNNGRLSQDPYDLPKNSHIPCHYDLLPVRDSS
 SSPKQEDSGGSSSSSSSE

TRTRPLE - GFP Tag - V

Restriction Sites: SgfI-MluI

Cloning Scheme:

Cloning sites used for ORF Shuttling:

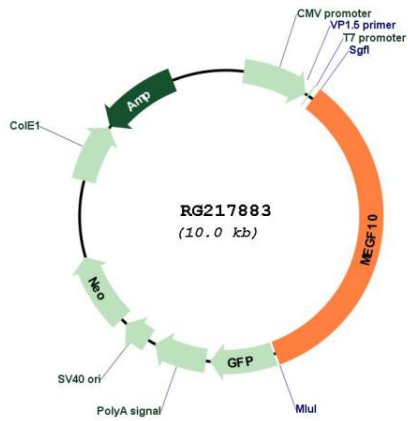


ACCN: NM_032446

ORF Size: 3420 bp

OTI Disclaimer:	Due to the inherent nature of this plasmid, standard methods to replicate additional amounts of DNA in E. coli are highly likely to result in mutations and/or rearrangements. Therefore, OriGene does not guarantee the capability to replicate this plasmid DNA. Additional amounts of DNA can be purchased from OriGene with batch-specific, full-sequence verification at a reduced cost. Please contact our customer care team at custsupport@origene.com or by calling 301.340.3188 option 3 for pricing and delivery.
	The molecular sequence of this clone aligns with the gene accession number as a point of reference only. However, individual transcript sequences of the same gene can differ through naturally occurring variations (e.g. polymorphisms), each with its own valid existence. This clone is substantially in agreement with the reference, but a complete review of all prevailing variants is recommended prior to use. More info
OTI Annotation:	This clone was engineered to express the complete ORF with an expression tag. Expression varies depending on the nature of the gene.
Components:	The ORF clone is ion-exchange column purified and shipped in a 2D barcoded Matrix tube containing 10ug of transfection-ready, dried plasmid DNA (reconstitute with 100 ul of water).
Reconstitution Method:	<ol style="list-style-type: none"> 1. Centrifuge at 5,000xg for 5min. 2. Carefully open the tube and add 100ul of sterile water to dissolve the DNA. 3. Close the tube and incubate for 10 minutes at room temperature. 4. Briefly vortex the tube and then do a quick spin (less than 5000xg) to concentrate the liquid at the bottom. 5. Store the suspended plasmid at -20°C. The DNA is stable for at least one year from date of shipping when stored at -20°C.
RefSeq:	NM_032446.1 , NP_115822.1
RefSeq Size:	7522 bp
RefSeq ORF:	3423 bp
Locus ID:	84466
UniProt ID:	Q96KG7
Cytogenetics:	5q23.2
Domains:	EGF_Lam, EGF, EGF
Protein Families:	Transmembrane
Gene Summary:	This gene encodes a member of the multiple epidermal growth factor-like domains protein family. The encoded protein plays a role in cell adhesion, motility and proliferation, and is a critical mediator of apoptotic cell phagocytosis as well as amyloid-beta peptide uptake in the brain. Expression of this gene may be associated with schizophrenia, and mutations in this gene are a cause of early-onset myopathy, areflexia, respiratory distress, and dysphagia (EMARDD) as well as congenital myopathy with minicores. Alternatively spliced transcript variants have been observed for this gene. [provided by RefSeq, Apr 2012]

Product images:



Circular map for RG217883