

## Product datasheet for **RG217874**

### IRF7 (NM\_004029) Human Tagged ORF Clone

#### Product data:

Product Type:	Expression Plasmids
Product Name:	IRF7 (NM_004029) Human Tagged ORF Clone
Tag:	TurboGFP
Symbol:	IRF7
Synonyms:	IMD39; IRF-7; IRF-7H; IRF7A; IRF7B; IRF7C; IRF7H
Mammalian Cell Selection:	Neomycin
Vector:	pCMV6-AC-GFP (PS100010)
E. coli Selection:	Ampicillin (100 ug/mL)



[View online »](#)

**ORF Nucleotide Sequence:**

>RG217874 representing NM\_004029  
 Red=Cloning site Blue=ORF Green=Tags(s)

TTTTGTAATACGACTCACTATAGGGCGGCCGGAATTCGTCGACTGGATCCGGTACCGAGGAGATCTGCC  
 GCC**GCGATCGCC**

ATGGCCTTGGCTCCTGAGAGGGCAGCCCCACGCTGCTGTTCCGAGAGTGGCTCCTTGGAGAGATCAGCA  
 GCGGCTGCTATGAGGGGCTGCAAGTGGCTGGACGAGGCCCGCACCTGTTTCCGCGTGCCCTGGAAGCACTT  
 CGCGCGCAAGGACCTGAGCGAGGCCGACGCGCATCTTCAAGGCCTGGGCTGTGGCCCGCGGCAGGTGG  
 CCGCTAGCAGCAGGGGAGGTGGCCCGCCCCGAGGCTGAGACTGCGGAGCGCGCCGGCTGAAAAACCA  
 ACTTCCGCTGCGCACTGCGCAGCAGCGTTCGTTCTGATGCTGCGAGATAACTCGGGGACCCGGCCGA  
 CCCGCACAAGGTGTACGCGCTCAGCCGGGAGTGTGCTGGCGAGAAGGCCAGGCACGGACCAGACTGAG  
 GCAGAGGCCCGCGAGTGTCCACCACCACAGGGTGGGCCCCAGGGCCATTCTGGCACACACATG  
 CTGGACTCCAAGCCCAGGCCCTCCCTGCCAGCTGGTGACAAGGGGACCTCTGCTCCAGGCAGT  
 GCAACAGAGCTGCCTGGCAGACCATCTGCTGACAGCGTCATGGGGGCGAGATCCAGTCCCAACCAAGGCT  
 CCTGGAGAGGGACAAGAAGGGCTTCCCCTGACTGGGGCCTGTGCTGGAGGCGAGGCCGCGGCCCCAGAGT  
 CCCCACAGGAGAGCCGTACCTGTACCCCTCCCAAGCGCCTGCACCGCGGTGCAAGAGCCCAGCCC  
 AGGGGCGCTGGACGTGACCATCATGTACAAGGGCCGACGGTGTGCAGAAGGTGGTGGGACACCCGAGC  
 TGCACGTTCTATACGGCCCCCAGACCAGCTGTCCGGCCACAGACCCACAGAGGTAGCATTCCCA  
 GCCCTGCCGAGCTCCCGGACCAGAAGCAGCTGCGCTACACGGAGGAACTGCTGCGGCACGTGGCCCTGG  
 GTTGCACCTGGAGCTTCGGGGCCACAGCTGTGGGCCCGCGCATGGCAAGTGAAGGTGTACTGGGAG  
 GTGGGCGGACCCAGGCTCCGCCAGCCCTCCACCCAGCCTGCCTGCTGCCTCGGAACGTGTGACACCC  
 CCATCTTCGACTTCAGAGTCTTCTTCCAAGAGCTGGTGGAAATTCGGGCGACGCGAGCCGTGGCTCCCC  
 ACGCTATACCATCTACCTGGGCTTCGGGCAGGACCTGTGACAGTGGGAGGCCCAAGGAGAAGAGCCTGGTC  
 CTGGTGAAGCTGGAACCTGGCTGTGCCAGTGCACCTAGAGGGCACGCAGCGTGAAGGTGTGCTTCCC  
 TGGATAGCAGCAGCCTCAGCCTCTGCTGTCCAGCGCCAACAGCCTCTATGACGACATCGAGTGTCTCT  
 TATGGAGCTGGAGCAGCCCGCC

AG**CGGACCG**ACGCGTACGCGGCCGCTCGAG – GFP Tag – GTTTAA

**Protein Sequence:**

>RG217874 representing NM\_004029  
 Red=Cloning site Green=Tags(s)

MALAPERAAPRVLFGEWLLGEISSGCEGLQWLDEARTCFRVPWKHFARKDLSEADARIFKAWAVARGRW  
 PPSSRGGPPPEAETAERAGWKNFRCALRSTRFVMLRDNSGDPADPHKVYALSRELCWREGPGTDQTE  
 AEAPAAVPPPQGGPPGF LAHTHAGLQAPGPLPAPAGDKDLLLLQAVQQSCLADHLLTASWGADPVPTKA  
 PEGEQEGLPLTGACAGGAAAPEPSPHQAEPYLSPSPSACTAVQEPSPGALDVTIMYKGRVTLQKVVGHPS  
 CTFLYGPDPAPVRATDPQVAFPSPAELPDQQLRYTEELLRHVAPGLHLELRGPQLWARRMGKCKVYWE  
 VGGPPGASPSPTACLPRNCDTPIFDFRVFFQELVEFRARQRRGSPRYTIYLGFGQDLSAGRPKEKSLV  
 LVKLEPWLCRVHLEGTQREGVSSLDSSLSLCLSSANSLYDDIECFLEMELEQPA

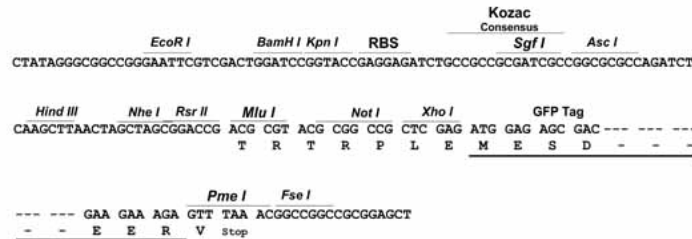
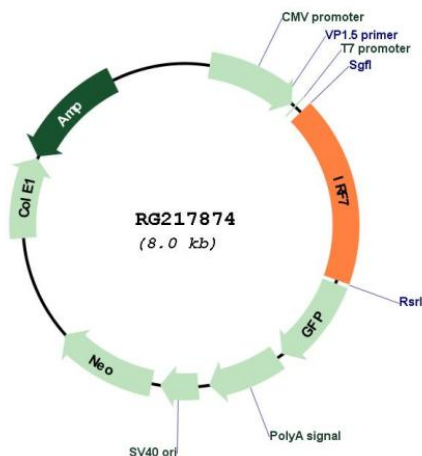
SGP**TRRRLE** – GFP Tag – V

**Restriction Sites:**

Sgfl-RsrII

**Cloning Scheme:**

Cloning sites used for ORF Shuttling:


**Plasmid Map:**

**ACCN:** NM\_004029

**ORF Size:** 1422 bp

**OTI Disclaimer:** The molecular sequence of this clone aligns with the gene accession number as a point of reference only. However, individual transcript sequences of the same gene can differ through naturally occurring variations (e.g. polymorphisms), each with its own valid existence. This clone is substantially in agreement with the reference, but a complete review of all prevailing variants is recommended prior to use. [More info](#)
**OTI Annotation:** This clone was engineered to express the complete ORF with an expression tag. Expression varies depending on the nature of the gene.

**Components:** The ORF clone is ion-exchange column purified and shipped in a 2D barcoded Matrix tube containing 10ug of transfection-ready, dried plasmid DNA (reconstitute with 100 ul of water).

<b>Reconstitution Method:</b>	<ol style="list-style-type: none"><li>1. Centrifuge at 5,000xg for 5min.</li><li>2. Carefully open the tube and add 100ul of sterile water to dissolve the DNA.</li><li>3. Close the tube and incubate for 10 minutes at room temperature.</li><li>4. Briefly vortex the tube and then do a quick spin (less than 5000xg) to concentrate the liquid at the bottom.</li><li>5. Store the suspended plasmid at -20°C. The DNA is stable for at least one year from date of shipping when stored at -20°C.</li></ol>
<b>RefSeq:</b>	<a href="#">NM_004029.1</a> , <a href="#">NP_004020.1</a>
<b>RefSeq Size:</b>	1816 bp
<b>RefSeq ORF:</b>	1425 bp
<b>Locus ID:</b>	3665
<b>UniProt ID:</b>	<a href="#">Q92985</a>
<b>Cytogenetics:</b>	11p15.5
<b>Domains:</b>	IRF
<b>Protein Families:</b>	Transcription Factors
<b>Protein Pathways:</b>	Cytosolic DNA-sensing pathway, RIG-I-like receptor signaling pathway, Toll-like receptor signaling pathway
<b>Gene Summary:</b>	IRF7 encodes interferon regulatory factor 7, a member of the interferon regulatory transcription factor (IRF) family. IRF7 has been shown to play a role in the transcriptional activation of virus-inducible cellular genes, including interferon beta chain genes. Inducible expression of IRF7 is largely restricted to lymphoid tissue. Multiple IRF7 transcript variants have been identified, although the functional consequences of these have not yet been established. [provided by RefSeq, Jul 2008]