

Product datasheet for **RG217846**

Collagen IV (COL4A2) (NM_001846) Human Tagged ORF Clone

Product data:

Product Type:	Expression Plasmids
Product Name:	Collagen IV (COL4A2) (NM_001846) Human Tagged ORF Clone
Tag:	TurboGFP
Symbol:	COL4A2
Synonyms:	BSVD2; ICH; POREN2
Mammalian Cell Selection:	Neomycin
Vector:	pCMV6-AC-GFP (PS100010)
E. coli Selection:	Ampicillin (100 ug/mL)
ORF Nucleotide Sequence:	>RG217846 representing NM_001846 Red=Cloning site Blue=ORF Green=Tags(s)

TTTTGTAATACGACTCACTATAGGGCGGCCGGAATTCGTCGACTGGATCCGGTACCGAGGAGATCTGCC
GCC**CGATCGCC**

ATGGGGAGAGACCAGCGCGGTGGCCGGCCTGCCCTACGGCGGTGGCTGCTGCTGGGGACAGTGACCG
TGGGGTTCCTCGCCAGAGCGTCTTGGCGGTGTGAAGAAGTTTGTGTGCCGTGTGGAGGAAGAGATTG
CAGTGGGGGCTGCCAGTGTACCTGAGAAAGGTGGACGTGGTCAGCCTGGGCCAGTGGCCCCCAGGGG
TACAATGGGCCACCAGGATTACAAGGATCCCCGGCTGCAGGGACGTAAGGAGACAAGGGTGAAGGG
GAGCCCCCGAGTAACAGGACCAAGGGCGACGTGGGAGCAAGAGCGTTTCTGGATTCCCTGGTGCCGA
TGGAAATCCTGGACACCCGGGGCAAGGTGGGCCAGGGGAAGGCCGGGCTACGATGGCTGCAACGGAACC
CAGGGAGACTCAGGTCCACAGGGGCCCCCGGCTCTGAGGGGTTACCGGGCCTCCCGGGCCCAAGGAC
CAAAAGGGCAGAAAGGTGAGCCTTATGCACTGCCTAAAGAGGAGCGCGACAGATATCGGGGTGAACCTGG
AGAGCCTGGATTGGTCGGTTTCCAGGGACCTCCCGGCCGCTGGGCATGTGGGACAGATGGGTCCAGTT
GGAGCTCCAGGGAGACCAGGACCCTGGACCCCTGGACAAAAGGACAGCAAGGCAACAGAGGACTTG
GTTTCTACGGAGTTAAGGGTGAAAAGGGTGACGTAGGGCAGCCGGGACCAACGGGATCCATCAGACAC
CCTCCACCCCATCATCGCGCCACAGGAGTCACCTCCACCCAGATCAGTACAAGGGTGAAAAGGCAGT
GAGGGGAACCAGGAATAAGAGGCATTTCTTGAAGGGAGAAGAAGGAATCATGGGCTTTCCTGGACTTA
GGGTTACCCTGGCTTGAGTGGTGAAGGATCACCAGGACAGAAGGGAAGCCGAGGCCTGGATGGCTA
TCAAGGGCCTGATGGACCCGGGACCTAAGGGAGAAGCCGGAGACCCAGGGCCCCCTGGACTACCTGCC
TACTCCCCTCACCTTCCCTAGCAAAAGGTGCCAGAGGTGACCCAGGATCCAGGGGCCCAAGGGGAGC
CAGGAAGCCAGGGTGGCCAGGAGACCCGGCCTCCAGGTCCCCTGGCCTCTCCATTGGAGATGGAGA
TCAGAGGAGAGGCCTGCCGGTGGATGGGACCAAGGGCTTATCGGAGACCCGGCATCCCTGCGCTC
TACGGGGCCACCTGGACCTGATGAAAGCGAGGGCCTCCAGGACCCCGGGCTCCCTGGACCACCTG
GACCTGATGGCTTCTGTTGGGCTGAAAGGAGCAAAAGGAAGAGCAGGCTTCCCTGGGCTTCCCGGCTC
CCCTGGAGCCCCGGACCAAGGGGTGAAAGGTGACGCTGGGAATGCAGATGTACAGAAGGCGACGAA



[View online »](#)

GCTATCAAAGGTCTTCCAGGACTGCCAGGACCCAAGGGCTTCGCAGGCATCAACGGGGAGCCGGGGAGGA
AAGGGGACAAAGGAGACCCCGGCAACACGGCCTCCCTGGGTTCCAGGGCTCAAGGGAGTGCCTGGCAA
CATTGGTGCTCCCGGACCCAAAGGAGCAAAAGGAGATTCCAGAACAATCACAACCAAGGTGAGCCGGGA
CAGCCCGGCGTCCAGGTGTGCCGGATGAAAGGTGACGATGGCAGCCAGGCCGATGGGCTCGATG
GATTCGCCGGCTCCAGGCCCTCCCGTGATGGCATCAAGGGCCCTCCAGGGACCCAGGTTATCCAGG
AATACCTGGAACGAAGGGTACTCCAGGAGAAATGGCCCCCAGGACTGGGCCTTCCCGCCTCAAAGGC
CAACGTGGTTTTCCCTGGAGACGCCGGCTTACCTGGACCACAGGCTTCCCTGGGCCCTCTGGCCCCGAC
GGACCCAGGACAAATAGATTGTGACACAGATGTGAAAAGGGCCGTTGGAGGTGACAGACAGGAGGCCAT
CCAGCCAGGTTGCATAGGAGGGCCAAAGGATTGCCAGGCCTGCCAGGACCCCCAGGCCCAAGGTGCC
AAAGGCCTCCGAGGAATCCAGGCTTCGCAGGAGCTGATGGAGGACCAGGGCCAGGGGCTTCCAGGAG
ACGCAGGTCGTGAAGGGTCCAGGACCCAGGGTTCATAGGACCCGAGGATCCAAAGGTGCAGTGGG
CCTCCCTGGCCAGATGGATCCAGGTCCTCGGCCTGCCAGGGCCAGATGGGCCCTTGGGAAAGG
GGCCTCCCTGGAGAAGTCTGGGAGCTCAGCCGGGCCACGGGGAGATGCTGGTGTGCTGGACAGCCTG
GGCTTAAAGGCCTTCCCGGAGACAGAGGCCCCCTGGATTAGAGGAAGCCAAGGGATGCCTGGGATGCC
AGGGCTGAAGGGCCAGCCAGGCCTCCAGGACCTTCCGGCCAGCCAGGCCTGTATGGGCCTCCAGGACTG
CATGGATTCCAGGAGCTCCTGGCCAAGAGGGGCCCTTGGGGCTGCCAGGAATCCAGGCCGTGAAGGTC
TGCTGGTGTATAGAGGGGACCCTGGGGACACAGGCCTCCTGGCCCTGTGGGCATGAAAGGTCTCTCTGG
TGACAGAGGAGATGCTGGCTTACAGGGGAGCAAGGCCATCCAGGAAGCCCTGGATTTAAAGGAATTGAT
GGAATGCCTGGGACCCCGGGCTAAAAGGAGATAGAGGCTCACCTGGGATGGATGGTTTTCAAGGCATGC
CTGGACTCAAAGGGAGACCCGGGTTTTCCAGGGAGCAAAGGCGAGGCTGGATTTTTCGGAATACCCGGTCT
GAAGGGTCTGGCTGGTGAGCCAGGTTTTAAAGGACGCCAGGGGACCCTGGGCCCCAGGACCACCTCCT
GTCATCCTGCCAGGAATGAAAGACATTAAGGAGAGAAAGGAGATGAAGGGCCTATGGGGCTGAAAGGAT
ACCTGGGCGCAAAAGGTATCCAAGGAATGCCAGGCATCCAGGGCTGTGAGGAATCCCTGGGCTCCTGG
GAGGCCCGGCCACATCAAAGGAGTCAAGGGAGACATCGGAGTCCCGGCATCCCGGTTTTGCCAGGATTC
CCTGGGGTGGCTGGCCCCCTGGAATTACGGGATTCCAGGATTCATAGGAAGCCGGGGTACAAAGGTG
CCCCAGGGAGAGCAGGCCTGTATGGCGAGATTGGCGGACTGGTGTTCGGTGACATCGGGGACACTAT
AAATTTACCAGGAAGACCAGGCCTGAAGGGGGAGCGGGGACCCTGGAATACCAGGTCTGAAGGGATTC
TTTGGAGAGAAGGAACAGAAGGTGACATCGGCTTCCCTGGGATAACAGGCGTACTGGAGTCCAAGGCC
CTCCTGGACTTAAAGGACAAACAGGCTTCCAGGGCTGACTGGGCCTCCAGGGTCGACGGGAGAGCTGGG
GCGGATTGGACTGCCTGGTGGCAAAGGAGATGATGGCTGGCCGGGAGCTCCGGGTTACCAGTTTTCCG
GGACTCCGTGGGATCCCGGGCTTACACGGCTTCCAGGCACCAAGGGCTTCCAGGATCCCAGGTTCTG
ACATCCAGGAGACCCAGGCTTCCAGGCCCTCCTGGGAAAGAGGTGACCCAGGAGAGGGCAACACCCCT
TCCAGGCCCTGTGGGAGTCCCAGGACAGAAAGGAGACCAAGGAGCTCCAGGGGAACGAGGCCACCTGGG
AGCCCAGGACTTCAAGGGTTCCAGGCATCACACCCCTTCCAACATCTCTGGGGCACCTGGTGACAAAAG
GGGCGCCAGGGATATTTGGCCTGAAAGGTTATCGGGGCCACCAGGGCCACCAGGTTCTGCTGCTTTCC
TGGAAGCAAAGGTGACACAGGGAACCCAGGAGCTCCAGGAACCCAGGGACCAAAGGATGGGCCGGGGAC
TCCGGGCCCCAGGGCAGGCCTGGTGTGTTGGTCTCCAGGAGAAAAAGGGCCAGGGGTGAACAAGGCT
TCATGGGGAACACTGGACCCACCGGGCGGTGGGCGACAGAGGCCCAAGGGACCAAGGGAGAGCCAGG
ATTCCTGGTGCCCGGGACTGTGGGAGCCCCGGGATTGCAAGAAATCCCCAGAAGATTGCCGTCCAA
CCAGGGACAGTGGGTCCCAAGGGAGGCGAGGCCCTTGGGGCACCGGGGAGATGGGGCCCAAGGGCC
CCCCCGGAGAACCAGGTTTTCTGGGGTCCAGGAAAGCTGGGCCCAAGGAAGAGGTGGTGTGCTGCTG
TGTTCGGCTTCCGGGAGATGAAGGACCCATAGGCCACCAGGGGCCGATTGGCCAAGAAGGTGCACCA
GGCCGTCCAGGGAGCCCGGGCTGCCGGTATGCCAGGCCGACGCTCAGCATCGGCTACCTCCTGGTGA
AGCACAGCCAGACGACCAGGAGCCATGTGCCGGTGGGCATGAACAACTCTGGAGTGGATACAGCCT
GCTGTACTTCAGGGCCAGGAGAAGGCGACAACCAGGACCTGGGGCTGGCGGGCTCCTGCCTGGCGGG
TTCAGCACCATGCCCTTCTGTACTGCAACCTGGTGTGTCTGCTACTATGCCAGCCGGAACGACAAGT
CCTACTGGCTCTACTACTGCGCGCTGCCATGATGCCCGTGGCCGAGGACGAGATCAAGCCCTACAT
CAGCCGCTGTTCTGTGTGTGAGGCCCGGCCATCGCCATCGCGGTCCACAGTCAGGATGTCTCCATCCCA
CACTGCCAGCTGGGTGGCGGAGTTTGGGATCGGATATTCCTTCTCATGCACACGGCGCGGGAGACG
AAGCGGTGGCCAATCACTGGTGTACCAGGACGCTGTCTAGAGGACTTCCGCGCCACACCATTCATCGA
ATGCAATGGAGGCCGCGGCACCTGCCACTACTACGCCAACAGTACAGCTTCTGGCTGACCACCATTCG
GAGCAGAGCTTCCAGGGCTCGCCTCCGCCGACACGCTCAAGGCCGGCTCATCCGCACACATCAGCC

GCTGCCAGGTGTGCATGAAGAACCTG

ACGCGTACGCGGCCGCTCGAG – GFP Tag – GTTTAA

Protein Sequence:

>RG217846 representing NM_001846

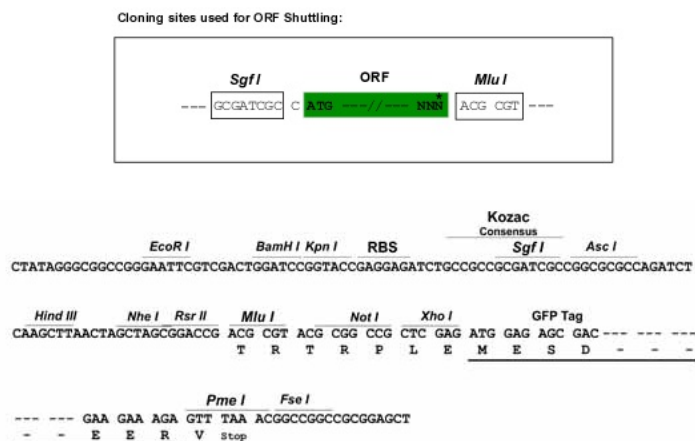
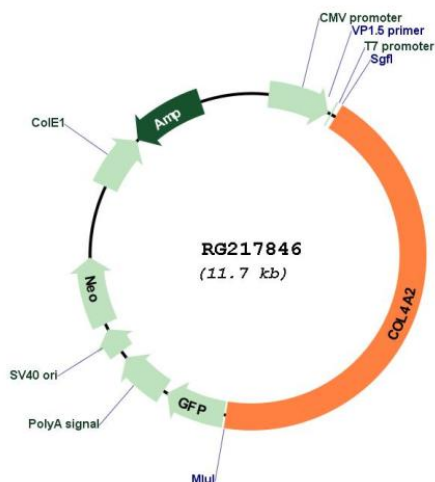
Red=Cloning site Green=Tags(s)

MGRDQRAVAGPALRRWLLLGTVTVGFLAQSVLAGVKKFDVPCGGRDCSGGCQCYPEKGGRGQPGVPQPQ
 YNGPPGLQGFPLQGRKGDKGERGAPGVTGPKGDVARGVSGFPGADGIPGHPGQGGPRGRPGYDGCNGT
 QGDSGPQGGPSEGF TGGPPGQPKGQKGEYALPKEERDRYRGEPEGLVGFQGGPRGPHVGMGPV
 GAPGRPGPPGPPGPKGQGNRGLGFYGVKGEKGDVQPGPNGIPSDTLHPHIIAPTGVTFHPDQYKGEKGS
 EGEPGIRGISLKGEEGIMGFPLRGYPGLSKEKSPGQKGSRLDGYQGPDPGRGPKGEAGDPGPPGLPA
 YSPHPSLAKGARGDPGFPGAQGEPSQGEPLGPPGLSIGDGDQRRGLPGEMGPKGFIGDGPAL
 YGGPPGDPGKRGPPGPPGLPGPPGDFLFLKLGAKGRAGFPGLPGSPGAPGPKGKGDAGECRCTEGDE
 AIKGLPGLPGPKFAGINGEPGRKGDGDPGQHLPGFPLKGVPGNIGAPGPKGAKGDSRTITTKGERG
 QPGVPGVPMKGDGSPGRDGLDGFPLPGPPGDIKGGPDGYPGIPGKGTGEMGPPGLGLPLKKG
 QRGFPDAGLPGPPGFLGPPGAGTPGQIDCDTDVKRAVGGDRQEAIQGCIGGPKGLPLGPPGPTGA
 KGLRGIPGFAGADGGPGPRGLPGDAGREGFPFPGFIPRGSKGAVGLPGDGSPIGLPGDGPGER
 GLPGEVLGAQPGPRGDAGVPGQPLKGLPGDRGPPGFRGSQGMGMPGLKQPLPGPSQPLGPPGL
 HGFPGAPQEGPLGLPGIPGREGLPGDRGPDGTGAPGVGMKGLSGDRGDAGFTGEQGHGSPGFKGID
 GMPGTPLKGDGSPGMDGFQGMPLKGRPGFPGSKGEAGFFGIPGLKGLAGEPGFKGSRGDPGPPGPP
 VILPGMKDIKGEKDEGPMGLKGYLGAAGIQQMPGIPGLSGIPGLPGRPGHIKGVKGDIGVPGIPGLPGF
 PGVAGPPGITGFPF IGSRGDKGAPGRAGLYGEIGATGDFGDI GDTINLPGRPGLKGERGTTGIPGLKGF
 FGEKTEGDI GFPI TGVTGVQGGPGLKQGTGFPGLTGPPGSQGELGRIGLPGGKDDGWPGAPGLPGFP
 GLRGIRGLHGLPGTKGFPSPGSDIHGDPGFPGERGDPGEANTLPGPVGVPQKGDQGAPGERGPPG
 SPGLQGFPGITPPSNISGAPGDKGAPGIFGLKGYRGGPPGSAALPGSKGDTGNPAGPTGPKGWAGD
 SGPQGRPVFGLPGEKGRGEQGFMGNTGPTGAVDGRGPKGKGDGPFPGAPGTGAPGIAGIPQKIAVQ
 PGTVGPQRRGPPGAPGEMGPPGEPGFRGAPGKAGPQGRGGVAVPFRGDEGPIGHQPIGQEGAP
 GRPGSPGLPGMPGRSVSIGYLLVKHSQTDQEPMPVGMNKLWSGSLLYFEGQEKAHNQDLGLAGSCLAR
 FSTMPFLYCNPGDVCYYASRNDKSYWLSTTAPLPMMPVAEDEIKPYISRCSVCEAPAI AIAVHSQDVSIP
 HCPAGWRSWIGYSFLMHTAAGDEGGGQSLVSPGSCLEDFRATPFIECNGGRGTCHYYANKYSFWLTTIP
 EQSFQGSPSADTLKAGLIRTHISRCQVCMKNL

TRTRPLE – GFP Tag – V

Restriction Sites:

Sgfl-MluI

Cloning Scheme:

Plasmid Map:


ACCN: NM_001846

ORF Size: 5136 bp

OTI Disclaimer: The molecular sequence of this clone aligns with the gene accession number as a point of reference only. However, individual transcript sequences of the same gene can differ through naturally occurring variations (e.g. polymorphisms), each with its own valid existence. This clone is substantially in agreement with the reference, but a complete review of all prevailing variants is recommended prior to use. [More info](#)

OTI Annotation: This clone was engineered to express the complete ORF with an expression tag. Expression varies depending on the nature of the gene.

Components: The ORF clone is ion-exchange column purified and shipped in a 2D barcoded Matrix tube containing 10ug of transfection-ready, dried plasmid DNA (reconstitute with 100 ul of water).

Reconstitution Method:

1. Centrifuge at 5,000xg for 5min.
2. Carefully open the tube and add 100ul of sterile water to dissolve the DNA.
3. Close the tube and incubate for 10 minutes at room temperature.
4. Briefly vortex the tube and then do a quick spin (less than 5000xg) to concentrate the liquid at the bottom.
5. Store the suspended plasmid at -20°C. The DNA is stable for at least one year from date of shipping when stored at -20°C.

RefSeq: [NM_001846.1](#), [NP_001837.1](#)

RefSeq Size: 6276 bp

RefSeq ORF: 5139 bp

Locus ID: 1284

UniProt ID: [P08572](#)

Cytogenetics: 13q34

Protein Families: Transmembrane

Protein Pathways: ECM-receptor interaction, Focal adhesion, Pathways in cancer, Small cell lung cancer

Gene Summary: This gene encodes one of the six subunits of type IV collagen, the major structural component of basement membranes. The C-terminal portion of the protein, known as canstatin, is an inhibitor of angiogenesis and tumor growth. Like the other members of the type IV collagen gene family, this gene is organized in a head-to-head conformation with another type IV collagen gene so that each gene pair shares a common promoter. [provided by RefSeq, Jul 2008]