

Product datasheet for **RG217806**

ECM2 (NM_001393) Human Tagged ORF Clone

Product data:

Product Type:	Expression Plasmids
Product Name:	ECM2 (NM_001393) Human Tagged ORF Clone
Tag:	TurboGFP
Symbol:	ECM2
Mammalian Cell Selection:	Neomycin
Vector:	pCMV6-AC-GFP (PS100010)
E. coli Selection:	Ampicillin (100 ug/mL)



[View online »](#)

**ORF Nucleotide
Sequence:**

>RG217806 representing NM_001393
 Red=Cloning site Blue=ORF Green=Tags(s)

TTTTGTAATACGACTCACTATAGGGCGGCCGGGAATTCGTCGACTGGATCCGGTACCGAGGAGATCTGCC
 GCC**CGATCGCC**

ATGAAGATTGCAGTTTTGTTTTGTTTTTCTGCTTATCATTTTTCAAACACTGACTTTGGAATAAATGAAG
 AAATTCCTAGGAAGCAAAGGAGGAAGATCTACCACAGAAGGTTGAGGAAAAGTTCAACCTCACACAAGCA
 CAGATCAAACAGACAGCTTGGAATTCAGCAAACACAGTTTTTACACCAGTAGCAAGACTTCCTATTGTT
 AACTTTGATTATAGCATGGAGGAAAAGTTGAATCCTTTTCAAGTTTTCTGGAGTAGAATCAAGTTATA
 ATGTGTTACCAGGAAAGAAGGGACACTGTTTGGTAAAGGGCATAACCATGTACAACAAAGCTGTGTGGTC
 GCCTGAGCCCTGCACTACCTGCCTCTGCTCAGATGGAAGAGTTCTTTGTGATGAAACCATGTGCCATCCC
 CAGAGGTGCCCAACAGTTATACCTGAAGGGGAATGCTGCCCGGTCTGCTCCGCTACTGTCTCCTATT
 CTCTACTCAGTGGTATAGCATTAAATGATAGAAATGAATTTTCTGGTGATTCTTCAGAACAAGAGAACC
 TACCAATTTACTTCATAAGCAACTGCCACCTCCTCAGGTGGGAATGGACCGAATAGTAAGAAAAGAAGCA
 CTTCAATCTGAGGAGGATGAAGAAGTGAAGAAGAAGATACAGAGCAAAAGAGAGAGACCCCTGAATCTA
 GAAATCAGGGGCAACTTTACAGTGAGGGGGACAGCAGAGGAGGAGACAGAAGCAGAGGCCCTGGAGAGGA
 GAGGAGGCTGGCACACCAGCAACAACGCCAAGGAAGGGAGGAGGAGGAGGATGAGGAGGAGGAGGTTGAG
 GAGGGTGAGGAGGATGAGGAGGACGAGGAGGACCCGGTAAAGAGGAGATATGTTCCGAATGCCCTCTCGAT
 CCCCCTTCTGCTCCTCCAGAGGCACACTGCGCCTGCCAAGCGGGTCTCTGTCTACAGGACCAT
 CAGCTGCATCAACGCCATGCTTACCAGATACCACCGTGACAGCACCACAGATAACAAGTCTGGAGCTC
 ACTGGCAATTCATCGCCTCCATCCAGATGAAGCATTTAATGGATTACCAAATTTGAAAGGCTTGATC
 TGAGTAAAAATAATCACTTCTTCAGGCATAGGTCCAAAAGCATTCAAGCTTCTGAAGAAGTTAATGCG
 TTTGAATATGGATGGAAATAATTTGATACAGATTCCTTCAACAATTGCCATCTACATTAGAAGAATTA
 GTCAATGAGAACAATCTTCAGGCTATCGATGAAGAAAGTTTATCAGACTTAAATCAGTTGGTACCTTAG
 AATTGGAAGGAAACAATCTCAGTGAAGCCAATGTCAATCCTTTAGCTTTCAAACCTTTGAAGAGCCTAGC
 CTACTTGGCTCTGGGAAAAATAAATTTAGAATTATACCGCAGGGTCTTCTGTTCTATTGAGGAATTA
 TACCTAGAAAATAACCAAATGAAGAAATAACTGAAATTTGTTTCAATCATACCAGAAAGATCAATGTCA
 TTGTAACGTTATAACAAAATGAAGAAAATAGGATTGCTCCTTAGCCTGGATAAATCAAGAAAATCT
 AGAATCCATTGATCTCTCTACAACAAGCTCTATCACGTCCTGCTCTATACCCAAGTCTTGTGTCAC
 CTAGTACTCCTTGGGAACCAGATTGAACGGATCCCTGGCTATGTGTTGGCCACATGGAACCAGGCCTGG
 AATACTTGTACCTGTCATTTAACAACTTGTCTGATGATGGCATGGACCGTCTCCTTCTATGGGGCATA
 TCATTCTCTGAGAGAATTATTTCTGGATACAATGACTTAAAATCTATACCACCTGGGATACAAGAAATG
 AAAGCACTACATTTTCTGAGGCTGAACAACAAGATACGGAACATTCTCCAGAAGAAATTTGCAATG
 CTGAAGAGGATGATGACTCAAATCTGGAACATCTTCATCTTGAACAATATATTTAAATTTAGAGAAAT
 ACCATCTTACACATTTTCATGCATAAGATCATACTCAAGTATCGTTCTTAAACCACAAAACATCAAG

ACGCGTACGCGGCCGCTCGAG - GFP Tag - GTTTAA

Protein Sequence: >RG217806 representing NM_001393
 Red=Cloning site Green=Tags(s)

MKIAVLCFFLLIIFQDFGKNEEIPRKQRRKIYHRRLKSSSTSHKHRSNRQLGIQOTTVFTVARLPV
 NFDYSMEEFESFSSFPGVESYNVLPGKKGHCLVKGITMYNKAVWSPEPCTTCLCSDGRVLCDETMCHP
 QRCPQTVIPEGECCPVCSATVSYSLLSGIALNDRNEFSGDSSEQREPTNLLHKQLPPPQVGMDRVIRKEA
 LQSEDEEVKEEDEQKRETPESRNQGQLYSEGDSRGGDRKQRPGEERRLAHQQRQGREEEEEDEEEGE
 EGEEDEEDEDVVRGDMFRMPSRSLPAPPRGTLRLPSGCSLSYRTISCNAMLTQIPPLTAPQITSLEL
 TGNASIASIPDEAFNGLPNLERLDL SKNNITSSGIGPKAFKLLKLMRLNMDGNLIQIPSQLPSTLEELK
 VNENNLQAIDEESSLNLQVLTLEGNLSEANVNPLAFKPLKSLAYLRLGKNKFRIPQGLPGSIEEL
 YLENNQIEEITEICFNHTRKINVIVLRYNKIEENRIAPLAWINQENLESIDL SYNKLYHVPYLPKSLH
 LVLLGNQIERIPGYVFGHMEPGLEYLYL SFNKLADDGMDRVSYFGAYHSLRELF LDHNDLKSIPPGIQEM
 KALHFLRLNNKIRNILPEEICNAEEDDDSNLEHLHLENNYIKIREIPSYTFSCIRSYSSIVLKPQNIK

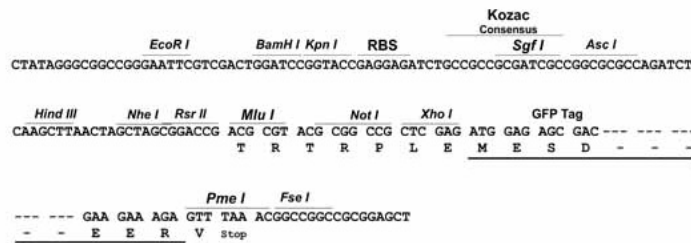
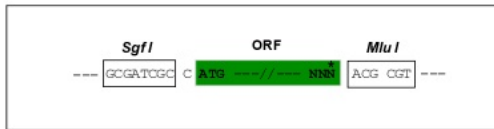
TRTRPLE - GFP Tag - V

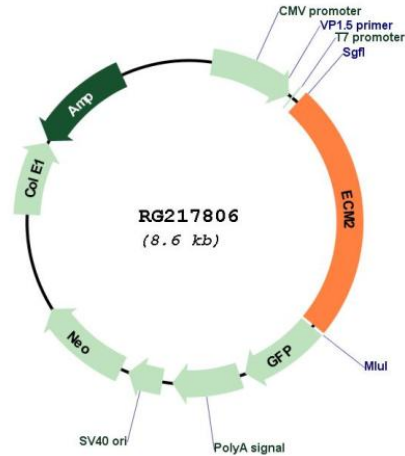
Restriction Sites:

SgfI-MluI

Cloning Scheme:

Cloning sites used for ORF Shuttling:



Plasmid Map:


ACCN: NM_001393

ORF Size: 2097 bp

OTI Disclaimer: The molecular sequence of this clone aligns with the gene accession number as a point of reference only. However, individual transcript sequences of the same gene can differ through naturally occurring variations (e.g. polymorphisms), each with its own valid existence. This clone is substantially in agreement with the reference, but a complete review of all prevailing variants is recommended prior to use. [More info](#)

OTI Annotation: This clone was engineered to express the complete ORF with an expression tag. Expression varies depending on the nature of the gene.

Components: The ORF clone is ion-exchange column purified and shipped in a 2D barcoded Matrix tube containing 10ug of transfection-ready, dried plasmid DNA (reconstitute with 100 ul of water).

Reconstitution Method:

1. Centrifuge at 5,000xg for 5min.
2. Carefully open the tube and add 100ul of sterile water to dissolve the DNA.
3. Close the tube and incubate for 10 minutes at room temperature.
4. Briefly vortex the tube and then do a quick spin (less than 5000xg) to concentrate the liquid at the bottom.
5. Store the suspended plasmid at -20°C. The DNA is stable for at least one year from date of shipping when stored at -20°C.

RefSeq: [NM_001393.3](#), [NP_001384.1](#)

RefSeq Size:	3163 bp
RefSeq ORF:	2100 bp
Locus ID:	1842
UniProt ID:	O94769
Cytogenetics:	9q22.31
Protein Families:	Secreted Protein
Gene Summary:	ECM2 encodes extracellular matrix protein 2, so named because it shares extensive similarity with known extracellular matrix proteins. Three transcript variants encoding different isoforms have been found for this gene. [provided by RefSeq, Oct 2010]