

Product datasheet for **RG217783**

KBTBD12 (NM_207335) Human Tagged ORF Clone

Product data:

Product Type:	Expression Plasmids
Product Name:	KBTBD12 (NM_207335) Human Tagged ORF Clone
Tag:	TurboGFP
Symbol:	KBTBD12
Synonyms:	KLHDC6
Mammalian Cell Selection:	Neomycin
Vector:	pCMV6-AC-GFP (PS100010)
E. coli Selection:	Ampicillin (100 ug/mL)



[View online »](#)

ORF Nucleotide Sequence:

>RG217783 representing NM_207335
 Red=Cloning site Blue=ORF Green=Tags(s)

TTTTGTAATACGACTCACTATAGGGCGGCCGGAATTCGTCGACTGGATCCGGTACCGAGGAGATCTGCC
 GCC**CGGATCGCC**

ATGGAGTGAAGATTGAGGGAAAAGAAAAATACCAACATAGCTTGAATTTACTGAATAAAATTCAGAACA
 TGAAGAATTAGCAGAAATGATTGATGTGGTACTCACAGCAGAAGGAGAGAAATTCCTTGCCACAGACT
 GGTCTGGCTGCATTTAGCCCTATTTCAAAGCTATGTTACCTGTGGACTACTGAATGAATCAAAGG
 GAAGTCATACTTTATGACATCACAGCAGAAAGTGTGTCGGTGTATTAATTTACATGTACAATGCAGCTT
 TGGAGATCAATAATGCCAATGTACAGACTGTAGCTATGGCTGCCTATTTTATGCAGATGGAAGAAGTCTT
 CAGTGTGTGCAAAAATATATGATGGACCACATGGATGCCTCCAAGTGTAGGTATCTATTATTTTGA
 AAGCAGATTGGAGCTGAAGATTTATCTGATCGATCAAAGAAATTTTATATCAGCACTTTGCCGAGGTGA
 GCTTACATGAAGAAATACTAGAAATCGAAGTGCACCAATTTTGGACACTTATTAATCAGATGATCTTAA
 CATATCCAGAGAAGAGAGCATTCTGGACTTAGTCTGAGATGGGTAATCATAACAAAGAATTGCGTACA
 GTGCATCTTGTGAGCTTTTGAAGCAAGTCAGATTGGAACCTGTAATCCTTCTTTTTAAGACAAGCCC
 TAAGAAGGAACACAATGCTTCTGTGTGATGCAGATTGTGTTGACATAATTCAAAATGCATTCAAAGCCAT
 CAAGACACCCCAACAGCACTCTCTAAATCTGCGCTATGGTATGGAGACTACCAAGTCTTCTGCTTGCATT
 GGCAACAATTTCTCAGGAATCAGATCAAGACATAGGAGCTATGGGGATGCCAGTTTTTGTATGATCCTG
 TATCACGGAAAACCTATTTTCATCTCATCTCCAAGTACGGAGAGGGTTTGAAGTGTGTACTGGTGT
 TGTCATGGAAAATAACTATAATTGTGGCTGGAGAAGCAAGTGCCTCTAACTCTAGACAAAAGAAC
 AAGAATGTTGAAATTTATAGGTATCATGATAGAGGAAACCAGTTTTGGGAAAAGTTATGCACAGTGAAT
 TTCGAGAATCTATGCTCTGGGCAGTATTCATAATGACCTTTATGTTATAGGAGGACAGATGAAAATTA
 AAACCAAGTATCTTATTACAAACTGTGTTGATAAGTACTCTGTAGAACGGGACAATTTGAAAAGGGTGTCT
 CCCCTTCCACTGCAATTGGCATGTCATGCTGTAGTGACAGTGAATAATAACTTTTATGTAATTGGAGGCT
 GGACCCCTCAGATGGATCTTCTGATGAAGAACCTGATCGATTAAGCAACAAACTGTTGCAGTATGACCC
 CAGCCAAGATCAATGGAGTGTGCGGGCACCCATGAAGTACTCTAAGTACCGATTCAGTACAGCTGTAGTC
 AACAGTGAATTTATGTTTTGGGTGGCATTGGCTGTGTAGGTCAAGACAAGGGCCAGTTTCGAAAATGCC
 TTGACGTGGTGGAGATCTACAACCCAGATGGGGACTTTTGGCGAGAGGGCCCTCCATGCCAAGTCCCCT
 CCTCTCACTCCGACCAATTCACCAATGCAGGGCAGTGGATGGGAACTCTATGTCTGCGGGGGATTCC
 CATGGAGCAGATGCCATGAGGTTATCTCAAAGAAATATTGGAAGTGGACCCATGGGAAAACCAGTGGAA
 ATGTTGTAGCCATCAACGTCCTCATGCATGACAGCTATGATGTCTGCCTAGTAGCCAGGATGAATCCCCG
 AGACCTCATCCCCCGCCTTCAGATTTGGTGAAGAAGGCAATGAGCAC

ACGCGTACGCGGCCGCTCGAG - GFP Tag - GTTTAA

Protein Sequence:

>RG217783 representing NM_207335
 Red=Cloning site Green=Tags(s)

MECKIEGKEKYQHSLNLLNKIQNMKELAEIMDVVLTAEGEKFPCHRLVLAASFSPYFKAMFTCGLLECNQR
 EVILYDITAEVSVLLNYMYNAALEINNANVQTVAMAAYFMQMEEVFSVCQKYMMDHMDASNCLGIYYFA
 KQIGAEDLSDRSKKYLQHFVSLHHEILEIEVHQFLTLIKSDDLNISREESILDVLRVWNHNKELRT
 VHLVELLKQVRELVNPSFLRQALRRNTMLLCDADCVDIIQNAFKAIKTPQQHSLNLRGMETTSLLLCCI
 GNNSSGIRSRHRSYGDASFYDPVSRKTYFISSPKYGEGLTVCTGVVMMENNTIIIVAGEASASKLSRQKN
 KNVEIYRYHDRGNQFWEKLCIAEFRELYALGSIHNDLYVIGGQMKIKNQYLITNCVDKYSVERDNWKRVS
 PLPLQLACHAVVTYNNKLYVIGGWTPQMDLPDEEPDRLSNKLLQYDPSQDQWSVRAPMKYSKYRFSTAVV
 NSEIYVLLGGIGCVGDKGQVRKCLDVVEIYNPDGDFWREGPPMPSPLLRLRTNSTNAGAVDGKLYVCGGF
 HGADRHEVISKEILELDPWENQWNVVAINVLMHDSYDVCLVARMNPRDLIPPPSDLVEEGNEH

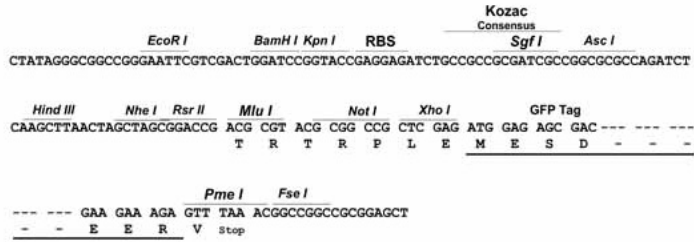
TRTRPLE - GFP Tag - V

Restriction Sites:

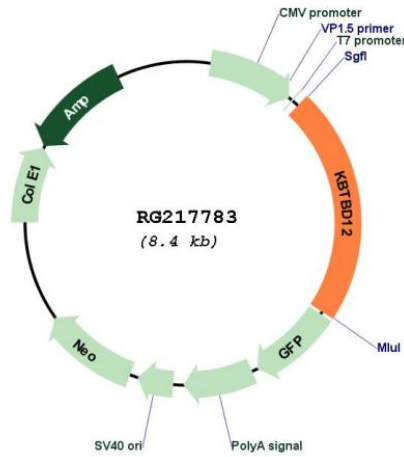
SgfI-MluI

Cloning Scheme:

Cloning sites used for ORF Shuttling:



Plasmid Map:



ACCN: NM_207335
 ORF Size: 1869 bp

OTI Disclaimer:	The molecular sequence of this clone aligns with the gene accession number as a point of reference only. However, individual transcript sequences of the same gene can differ through naturally occurring variations (e.g. polymorphisms), each with its own valid existence. This clone is substantially in agreement with the reference, but a complete review of all prevailing variants is recommended prior to use. More info
OTI Annotation:	This clone was engineered to express the complete ORF with an expression tag. Expression varies depending on the nature of the gene.
Components:	The ORF clone is ion-exchange column purified and shipped in a 2D barcoded Matrix tube containing 10ug of transfection-ready, dried plasmid DNA (reconstitute with 100 ul of water).
Reconstitution Method:	<ol style="list-style-type: none">1. Centrifuge at 5,000xg for 5min.2. Carefully open the tube and add 100ul of sterile water to dissolve the DNA.3. Close the tube and incubate for 10 minutes at room temperature.4. Briefly vortex the tube and then do a quick spin (less than 5000xg) to concentrate the liquid at the bottom.5. Store the suspended plasmid at -20°C. The DNA is stable for at least one year from date of shipping when stored at -20°C.
RefSeq:	NM_207335.4
RefSeq Size:	5268 bp
RefSeq ORF:	1872 bp
Locus ID:	166348
UniProt ID:	Q3ZCT8
Cytogenetics:	3q21.3