

Product datasheet for **RG217777**

VR1 (TRPV1) (NM_080706) Human Tagged ORF Clone

Product data:

Product Type:	Expression Plasmids
Product Name:	VR1 (TRPV1) (NM_080706) Human Tagged ORF Clone
Tag:	TurboGFP
Symbol:	VR1
Synonyms:	VR1
Mammalian Cell Selection:	Neomycin
Vector:	pCMV6-AC-GFP (PS100010)
E. coli Selection:	Ampicillin (100 ug/mL)



[View online »](#)

ORF Nucleotide Sequence:

>RG217777 representing NM_080706
 Red=Cloning site Blue=ORF Green=Tags(s)

TTTTGTAATACGACTCACTATAGGGCGGCCGGAATTCGTCGACTGGATCCGGTACCGAGGAGATCTGCC
 GCC**CGGATCGCC**

ATGAAGAAATGGAGCAGCACAGACTTGGGGCAGCTGCGGACCCACTCCAAAAGGACACCTGCCAGACC
 CCCTGGATGGAGACCCTAACTCCAGGCCACCTCCAGCCAAGCCCCAGCTCTCCACGGCCAAGAGCCGCAC
 CCGGCTCTTTGGGAAGGGTGACTCGGAGGAGGCTTCCCGGTGGATTGCCCTCACGAGGAAGGTGAGCTG
 GACTCCTGCCGACCATCACAGTCAGCCCTGTTATCACCATCCAGAGGCCAGGAGACGGCCCCACCGGTG
 CCAGGCTGCTGTCCAGGACTCTGTGCGCCAGCACCAGAGAAGACCCTCAGGCTCTATGATCGCAGGAG
 TATCTTTGAAGCCGTTGCTCAGAATAACTGCCAGGATCTGGAGAGCCTGCTGCTTCTCAGAGAAGAGC
 AAGAAGCACCTCACAGACAACGAGTTCAAAGACCCTGAGACAGGAAGACCTGTCTGCTGAAAGCCATGC
 TCAACCTGCACGACGGACAGAACACCACCATCCCCCTGCTCCTGGAGATCGCGCGCAAACGGACAGCCT
 GAAGGAGCTTGTCAACGCCAGCTACACGGACAGCTACTACAAGGGCCAGACAGCACTGCACATCGCCATC
 GAGAGACGCAACATGGCCCTGGTACCCTCCTGGTGGAGAACGGAGCAGACGTCCAGGCTGCGGCCCATG
 GGGACTTCTTTAAGAAAACCAAAGGGCGGCCCTGGATTCTACTTCGGTGAAGTCCCTGTCCCTGGCCG
 GTGCACCAACAGCTGGGCATCGTGAAGTTCCTGCTGCAGAACTCCTGGCAGACGGCCGACATCAGCGCC
 AGGGACTCGGTGGGAACACGGTGTGCACGCCCTGGTGGAGGTGGCCGACAACACGGCCGACAACACGA
 AGTTTGTGACGAGCATGTACAATGAGATTCTGATGCTGGGGGCCAAACTGCACCCGACGCTGAAGCTGGA
 GGAGCTCACCAACAAGAAGGGAATGACGCCGCTGGCTCTGGCAGCTGGGACCGGAAGATCGGGGTCTTG
 GCCTATATTCTCCAGCGGAGATCCAGGAGCCCGAGTGCAGGCACCTGTCCAGGAAGTTCACCGAGTGG
 CCTACGGGCCCGTGCACTCCTCGCTGTACGACCTGTCTGCATCGACACCTGCGAGAAGAAGTCCGTTGCT
 GGAGGTGATCGCCTACAGCAGCAGCAGACCCCTAATCGCCACGACATGCTCTTGGTGGAGCCGCTGAAC
 CGACTCCTGCAGGACAAGTGGGACAGATTCTGCAAGCGCATCTTCTACTTCAACTTCTGGTCTACTGCC
 TGTACATGATCATCTTACCATGGCTGCCTACTACAGGCCGTTGGATGGCTTGCCTCCCTTAAAGATGGA
 AAAAACTGGAGACTATTTCCGAGTACTGGAGAGATCCTGTCTGTGTTAGGAGGAGTCTACTTCTTTTTT
 CGAGGGATTAGTATTTCTGCAGAGGCCGCGCTCGATGAAGACCCTGTTTGTGGACAGCTACAGTGAGA
 TGCTTTTCTTTTGCAGTCACTGTTTCTGCTGGCCACCGTGGTGTGACTTCAGCCACCTCAAGGAGTA
 TGTGGCTTCCATGGTATTCTCCCTGGCCTTGGGCTGGACCAACATGCTCTACTACACCCGCGGTTTCCAG
 CAGATGGGCATCTATGCCGTCATGATAGAGAAGATGATCCTGAGAGACCTGTGCCGTTTCTGTTTGTCT
 ACATCGTCTTCTTGTTCGGGTTTTCCACAGCGGTGGTGCAGCTGATTGAAGACGGGAAGAATGACTCCCT
 GCCGCTGAGTCCACGTGCGCACAGGTGGCGGGGCCCTGCCTGCAGGCCCCCGATAGCTCCTACAACAGC
 CTGTACTCCACCTGCCTGGAGCTGTTCAAGTTCACCATCGGCATGGGCGACCTGGAGTTCCTGAGAACT
 ATGACTTCAAGGCTGTCTTATCATCTCTGCTGGCCTATGTAATTCTCACCTACATCCTCCTGCTCAA
 CATGCTCATCGCCCTCATGGGTGAGACTGTCAACAAGATCGCACAGGAGAGCAAGAACATCTGGAAGCTG
 CAGAGAGCCATCACCATCCTGGACACGGAGAAGAGCTTCTTAAAGTGCATGAGGAAGGCCTTCCGCTCAG
 GCAAGCTGCTGCAGGTGGGTACACACCTGATGGCAAGGACGACTACCGGTGGTGTCTCAGGTTGGACGA
 GGTTGAAGTGGACACCTGGAACACCAACGTGGGCATCATCAACGAAGACCCGGGCAACTGTGAGGGCGTC
 AAGCGCACCTGAGCTTCTCCCTGCGGTCAAGCAGAGTTTCAGGCAGACACTGGAAGAAGTTCCTGCTGG
 TCCCCCTTTTAAAGAGAGGCAAGTCTCGAGATAGGCACTGCTCAGCCCGAGGAAGTTTATCTGCGACA
 GTTTTCAGGGTCTCTGAAGCCAGAGGACGCTGAGGTCTTCAAGAGTCTGCCGCTTCCGGGGAGAAG

ACGGTACGCGGCCGCTCGAG – GFP Tag – GTTTAA

Protein Sequence: >RG217777 representing NM_080706
 Red=Cloning site Green=Tags(s)

```

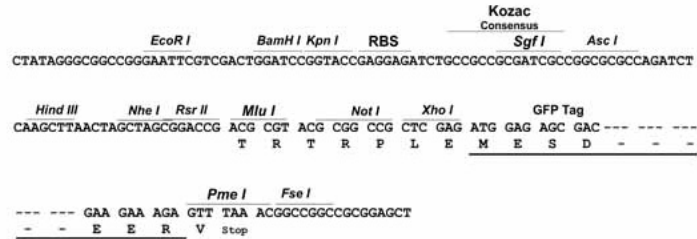
MKKWSSTDLGAAADPLQKDTCPDPLDGDPNRPPPAKPQLSTAKSRTRLFGKGDSEEAFPVDCPHEEGEL
DSCPTITVSPVITIQRPDGP TGARLLSQDSVAASTEKTLRLYDRRSIFEAVAQNNCQDLESLLLFLQKS
KKHLTDNEFKDPETGKTCLLKAMLNLDHGQNTTIPLLLEIARQTDLSKELVNASYTDSYKGTALHIAI
ERRNMALVTLVENGADVQAAAHGDFFKKTKGRPGFYFGELPLSLAACTNQLGIVKFLQNSWQTADISA
RDSVGNVTLHALVEVADNTADNTK FVTSMYNEILMLGAKLHPTLKLEELTNKKGMTPLALAAGTGKIGVL
AYILQREIQEPECRHLSRKFTWAYGPHSSLYDLSCIDTCEKNSVLEVIAYSSSETPNRHMLLVEPLN
RLLQDKWDRFVKRIFYFNFLVYCLYMIIFTMAAYRVPDGLPPFKMEKTGDYFRVTGEILSVLGGVYFFF
RGIQYFLQRRPSMKTLFVDSYSEMLFFLQSLFMLATVVL YFSHLKEYVASMVFLALGWTNMLYYTRGFQ
QMGYIYAVMIEKMILRDLCRFMFVYIVFLFGFSTAVVTLIEDGKNDSL PSESTSHRWRGPACRPPDSSYNS
LYSTCLELKFFTIGMGDLEFTENYDFKAVFIILLLAYVILTYILLNMLIALMGETVNKIAQESKNIWKL
QRAITILDTEKSF LKCMRKAFRSGKLLQVGYTPDGKDDYRWC FRVDEVNWTWNTNVIINEDPGNCEGV
KRTL SFSLRSSRVSGRHWNFALVPLLREASARDRQSAQP EEVYLRQFSGSLKPEDA EVFKSPAASGEK
  
```

TRTRPLE - GFP Tag - V

Restriction Sites: Sgfl-MluI

Cloning Scheme:

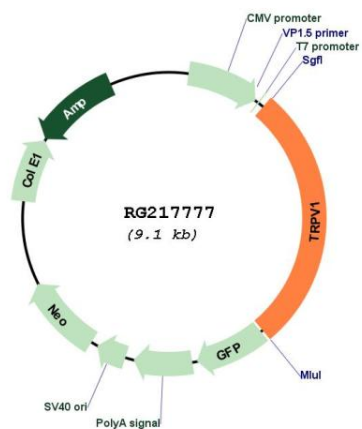
Cloning sites used for ORF Shutting:



ACCN: NM_080706
 ORF Size: 2517 bp

OTI Disclaimer:	<p>Due to the inherent nature of this plasmid, standard methods to replicate additional amounts of DNA in E. coli are highly likely to result in mutations and/or rearrangements. Therefore, OriGene does not guarantee the capability to replicate this plasmid DNA. Additional amounts of DNA can be purchased from OriGene with batch-specific, full-sequence verification at a reduced cost. Please contact our customer care team at custsupport@origene.com or by calling 301.340.3188 option 3 for pricing and delivery.</p> <p>The molecular sequence of this clone aligns with the gene accession number as a point of reference only. However, individual transcript sequences of the same gene can differ through naturally occurring variations (e.g. polymorphisms), each with its own valid existence. This clone is substantially in agreement with the reference, but a complete review of all prevailing variants is recommended prior to use. More info</p>
OTI Annotation:	This clone was engineered to express the complete ORF with an expression tag. Expression varies depending on the nature of the gene.
Components:	The ORF clone is ion-exchange column purified and shipped in a 2D barcoded Matrix tube containing 10ug of transfection-ready, dried plasmid DNA (reconstitute with 100 ul of water).
Reconstitution Method:	<ol style="list-style-type: none"> 1. Centrifuge at 5,000xg for 5min. 2. Carefully open the tube and add 100ul of sterile water to dissolve the DNA. 3. Close the tube and incubate for 10 minutes at room temperature. 4. Briefly vortex the tube and then do a quick spin (less than 5000xg) to concentrate the liquid at the bottom. 5. Store the suspended plasmid at -20°C. The DNA is stable for at least one year from date of shipping when stored at -20°C.
RefSeq:	NM_080706.3
RefSeq Size:	4415 bp
RefSeq ORF:	2520 bp
Locus ID:	7442
UniProt ID:	Q8NER1
Cytogenetics:	17p13.2
Protein Families:	Druggable Genome, Ion Channels: Transient receptor potential, Transmembrane
Protein Pathways:	Neuroactive ligand-receptor interaction
Gene Summary:	<p>Capsaicin, the main pungent ingredient in hot chili peppers, elicits a sensation of burning pain by selectively activating sensory neurons that convey information about noxious stimuli to the central nervous system. The protein encoded by this gene is a receptor for capsaicin and is a non-selective cation channel that is structurally related to members of the TRP family of ion channels. This receptor is also activated by increases in temperature in the noxious range, suggesting that it functions as a transducer of painful thermal stimuli in vivo. Four transcript variants encoding the same protein, but with different 5' UTR sequence, have been described for this gene. [provided by RefSeq, Jul 2008]</p>

Product images:



Circular map for RG217777